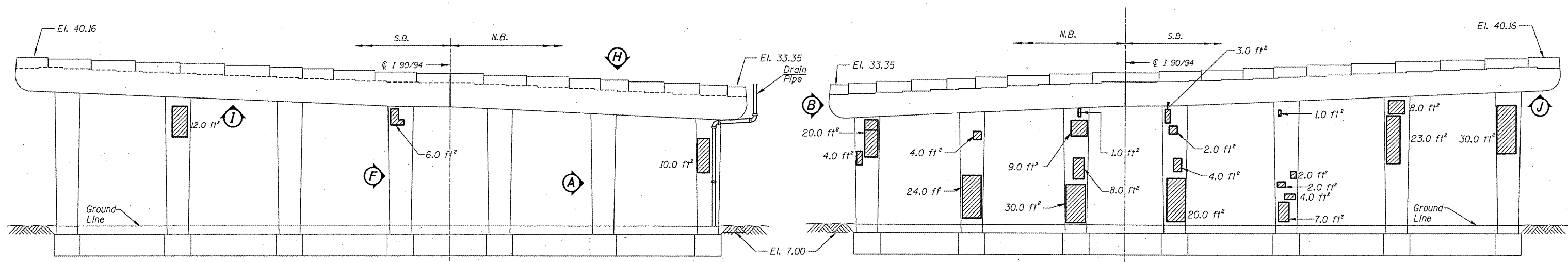


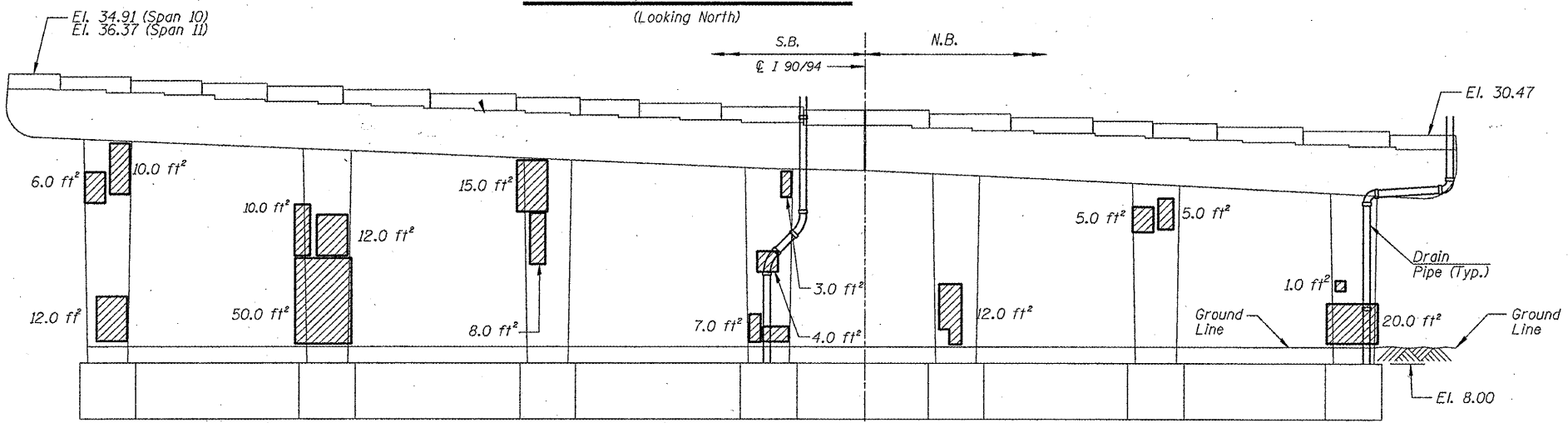
| | | | | |
|--------------------|-----------------------|----------------|--------------------|--------------------|
| ROUTE FAI 90/94 | SECTION 2011-027-I | COUNTY COOK | TOTAL SHEETS 87 | SHEET NUMBER 48 |
|--------------------|-----------------------|----------------|--------------------|--------------------|

CONTRACT NO. 60P27

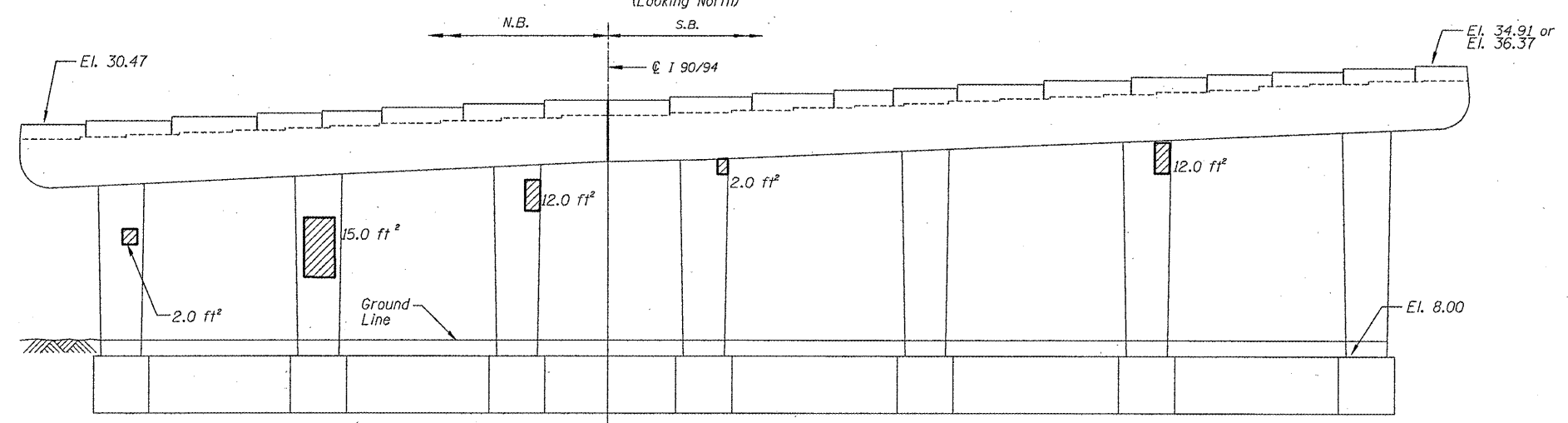


PIER 10 - SOUTH ELEVATION
(Looking North)

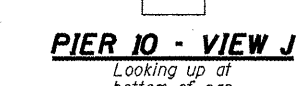
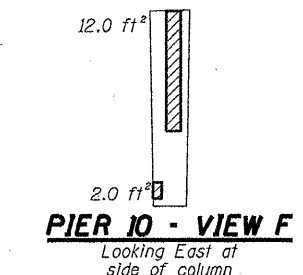
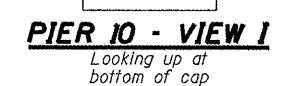
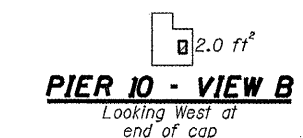
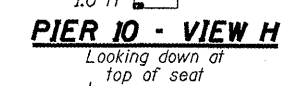
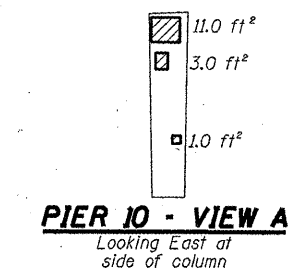
PIER 10 - NORTH ELEVATION
(Looking South)



PIER 11 - SOUTH ELEVATION
(Looking North)



PIER 11 - NORTH ELEVATION
(Looking South)



BILL OF MATERIAL

| ITEM | UNIT | QUANTITY |
|--|---------|----------|
| Structural Repair of Concrete (Depth equal to or less than 5") | SQ. FT. | 497.0 |

▨ - Structural Repair of Concrete (Depth equal to or less than 5")

ILLINOIS DEPARTMENT OF
TRANSPORTATION
I-90/94 (DAN RYAN EXPRESSWAY)
SUBSTRUCTURE REPAIRS
SN 016-1113
PIERS 10 & 11