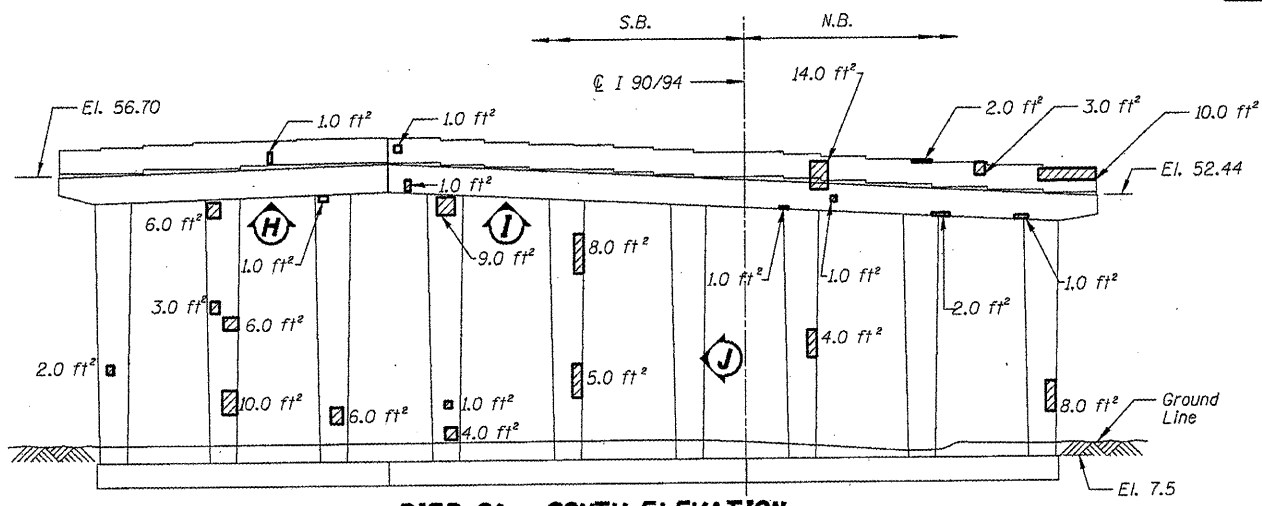
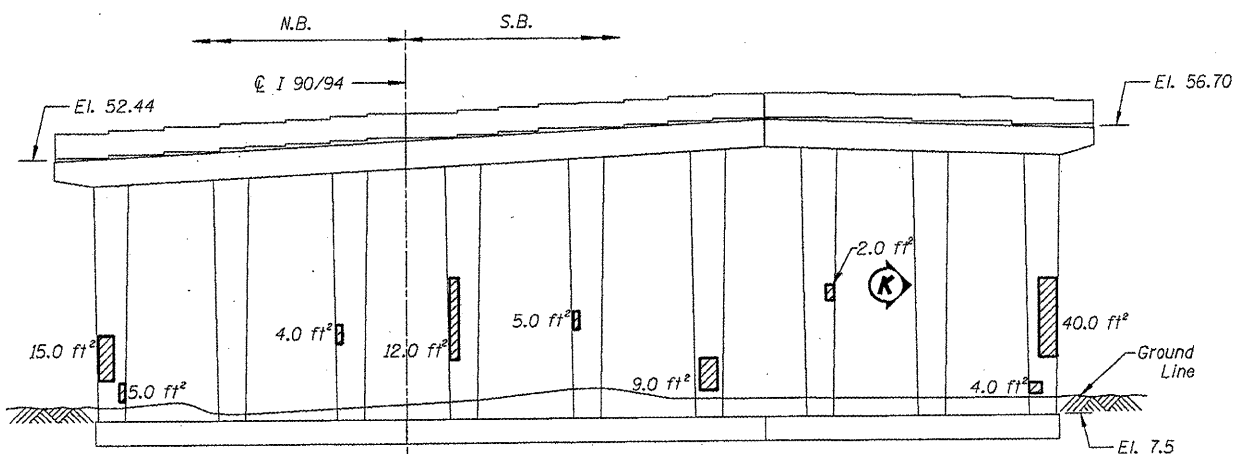


ROUTE FAI 90/94	SECTION 2011-027-I	COUNTY COOK	TOTAL SHEETS 87	SHEET NUMBER 54
--------------------	-----------------------	----------------	--------------------	--------------------

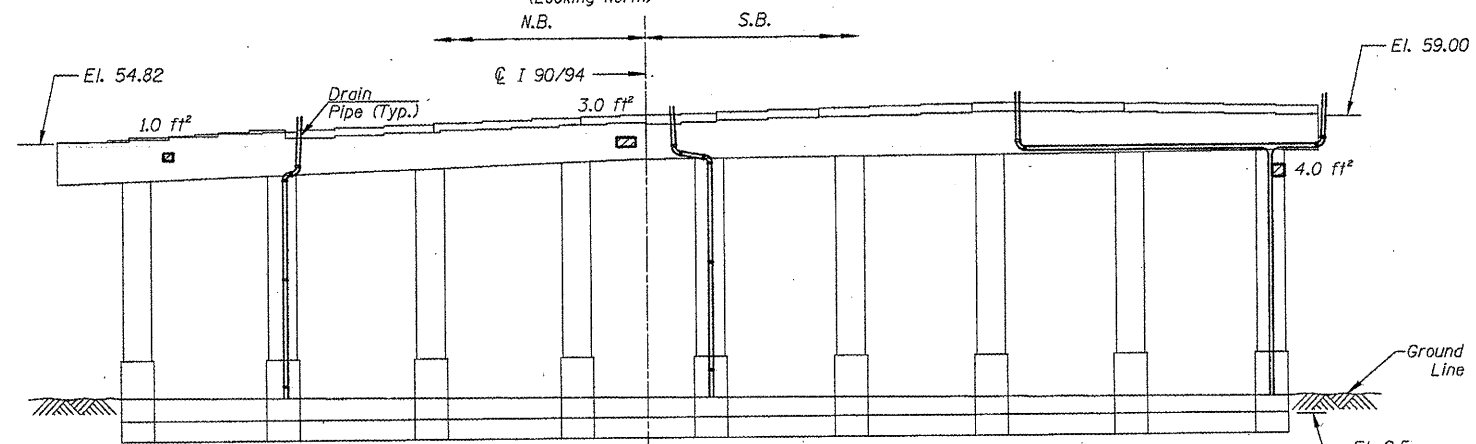
CONTRACT NO. 60P27



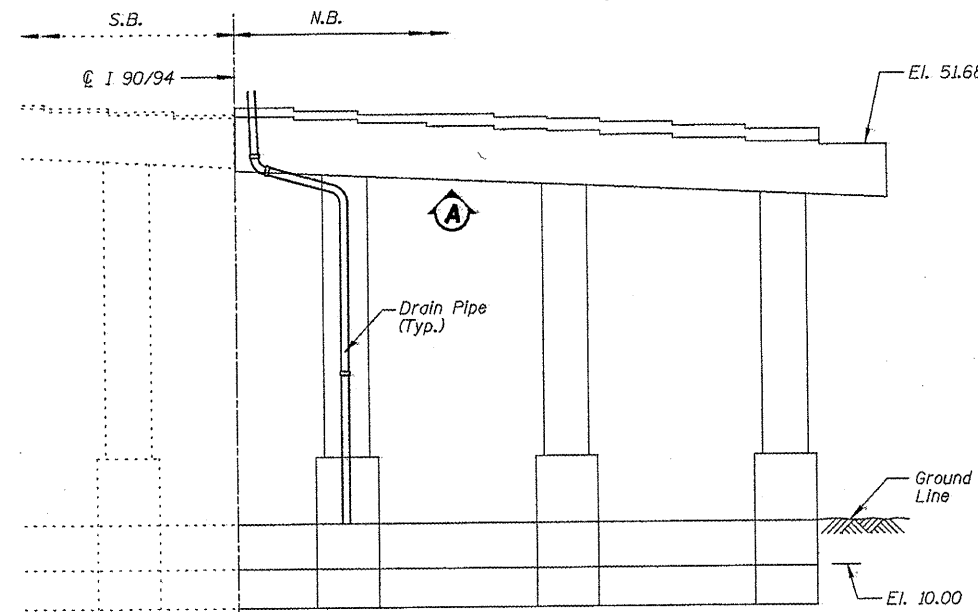
PIER 21 - SOUTH ELEVATION
(Looking North)



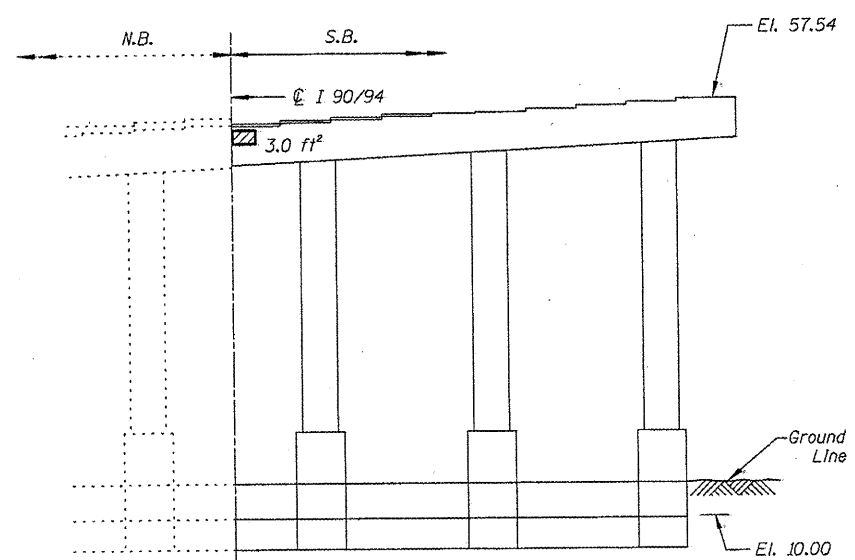
PIER 21 - NORTH ELEVATION
(Looking South)



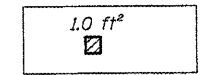
PIER 22 - NORTH ELEVATION
(Looking South)



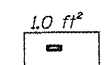
PIER 16 - SOUTH ELEVATION
(Looking North)



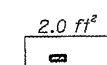
PIER 16 - NORTH ELEVATION
(Looking South)



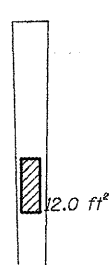
PIER 16 - VIEW A
Looking up at Bottom of Cap



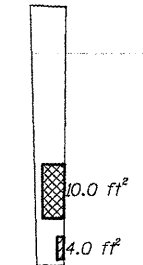
PIER 21 - VIEW H
Looking up at bottom of cap



PIER 21 - VIEW I
Looking up at bottom of cap



PIER 21 - VIEW J
Looking West at side of column



PIER 21 - VIEW K
Looking West at side of column

- Structural Repair of Concrete (Depth equal to or less than 5")
- Structural Repair of Concrete (Depth greater than 5")

BILL OF MATERIAL

ITEM	UNIT	QUANTITY
Structural Repair of Concrete (Depth equal to or less than 5")	SQ. FT.	237.0
Structural Repair of Concrete (Depth greater than 5")	SQ. FT.	10.0

ILLINOIS DEPARTMENT OF
TRANSPORTATION
I-90/94 (DAN RYAN EXPRESSWAY)
SUBSTRUCTURE REPAIRS
SN 016-1115
PIERS 16, 21, & 22