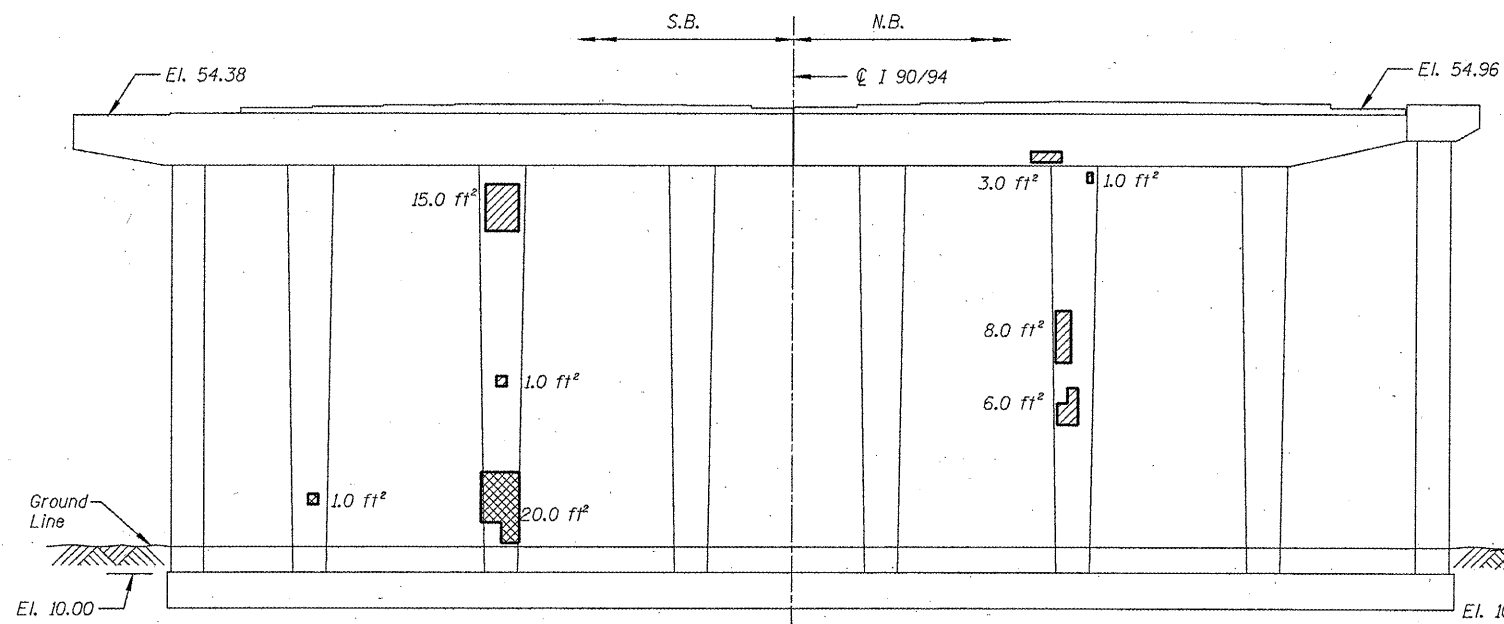
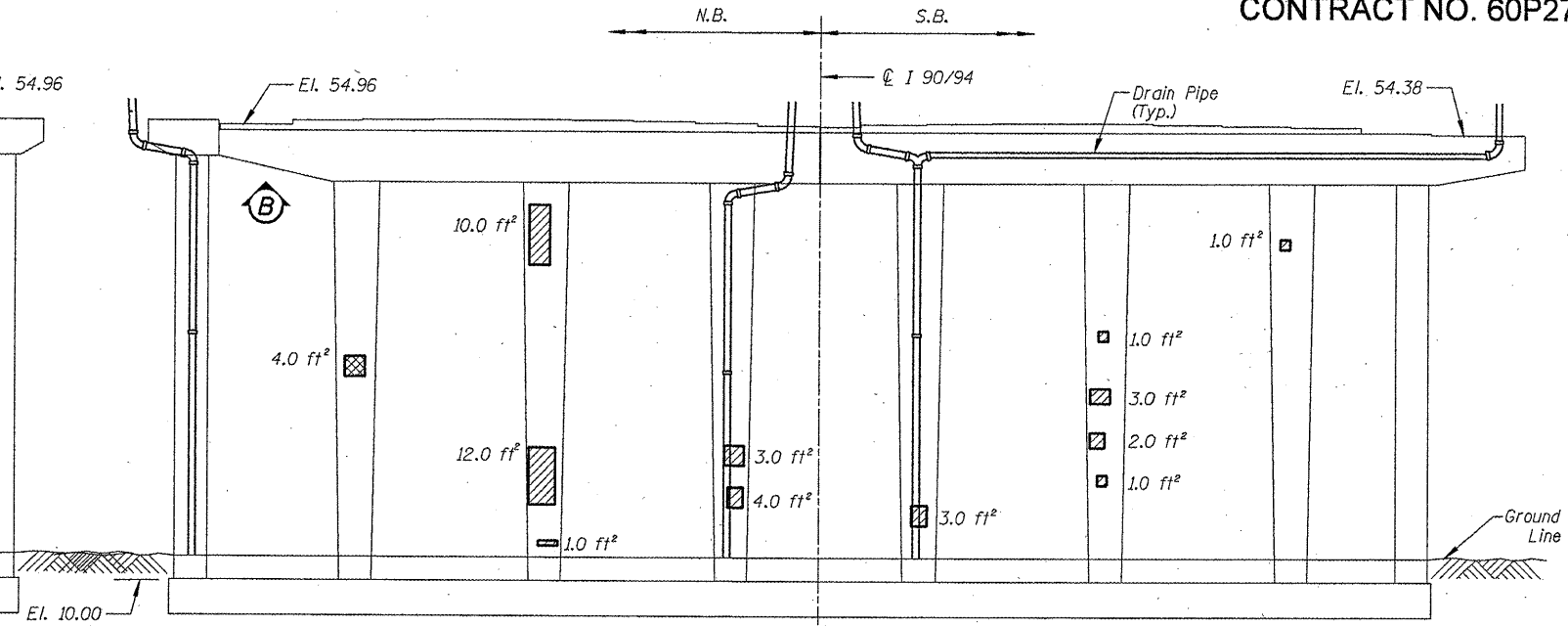


ROUTE FAI 90/94	SECTION 2011-027-I	COUNTY COOK	TOTAL SHEETS 87	SHEET NUMBER 60
--------------------	-----------------------	----------------	-----------------------	-----------------------

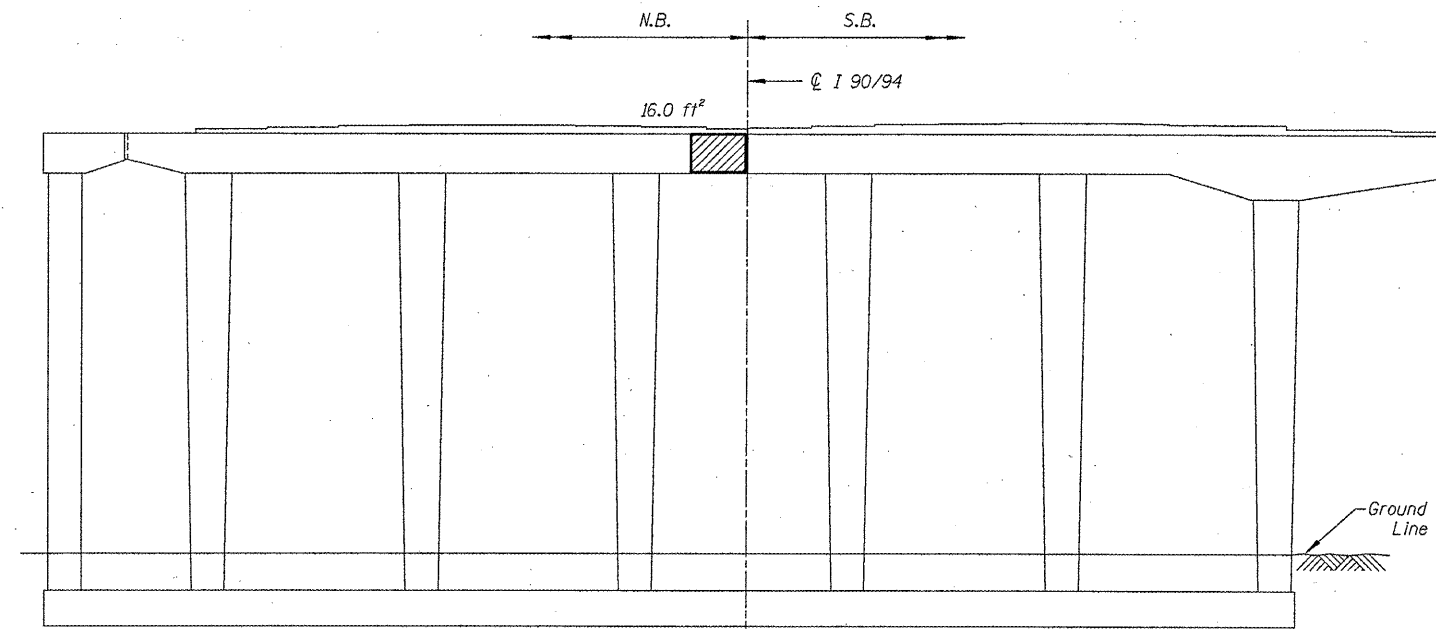
CONTRACT NO. 60P27



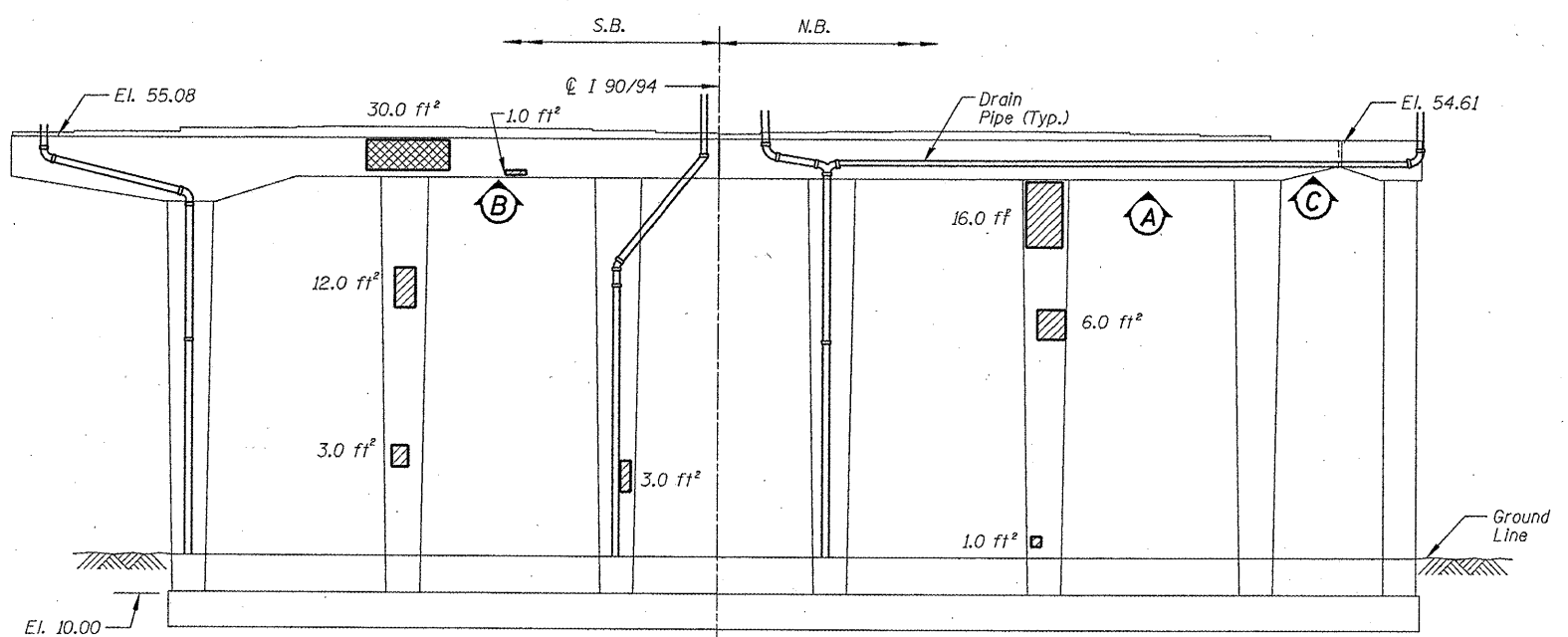
PIER 24 - SOUTH ELEVATION
(Looking North)



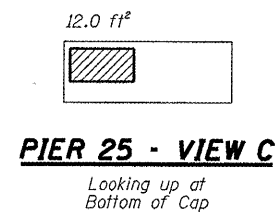
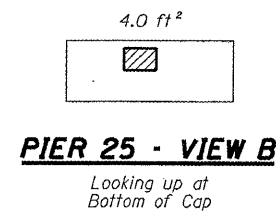
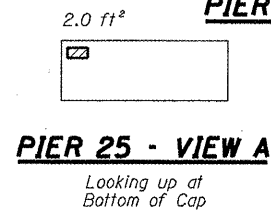
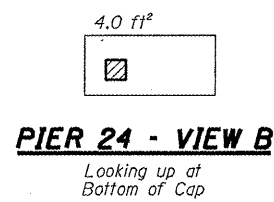
PIER 24 - NORTH ELEVATION
(Looking South)



PIER 25 - SOUTH ELEVATION
(Looking North)



PIER 25 - NORTH ELEVATION
(Looking South)



- Structural Repair of Concrete (Depth equal to or less than 5")
- Structural Repair of Concrete (Depth greater than 5")

BILL OF MATERIAL

ITEM	UNIT	QUANTITY
Structural Repair of Concrete (Depth equal to or less than 5")	SQ. FT.	155.0
Structural Repair of Concrete (Depth greater than 5")	SQ. FT.	55.0

ILLINOIS DEPARTMENT OF
TRANSPORTATION

I-90/94 (DAN RYAN EXPRESSWAY)
SUBSTRUCTURE REPAIRS
SN 016-1117
PIERS 24 & 25