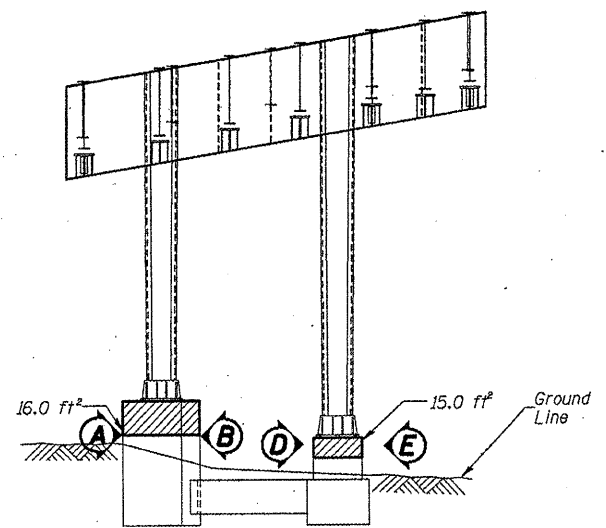
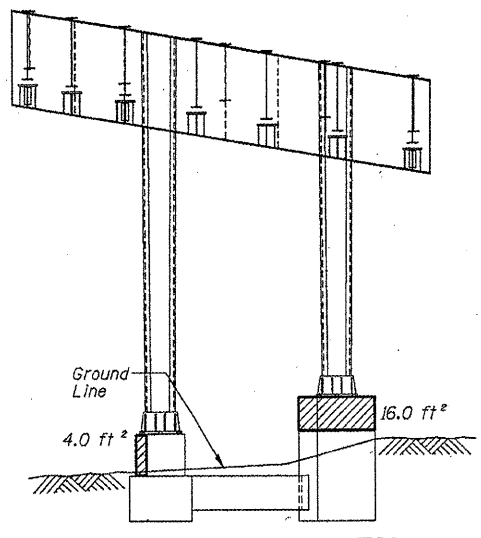


ROUTE FAI 90/94	SECTION 2011-027-1	COUNTY COOK	TOTAL SHEETS 87	SHEET NUMBER 61
--------------------	-----------------------	----------------	--------------------	--------------------

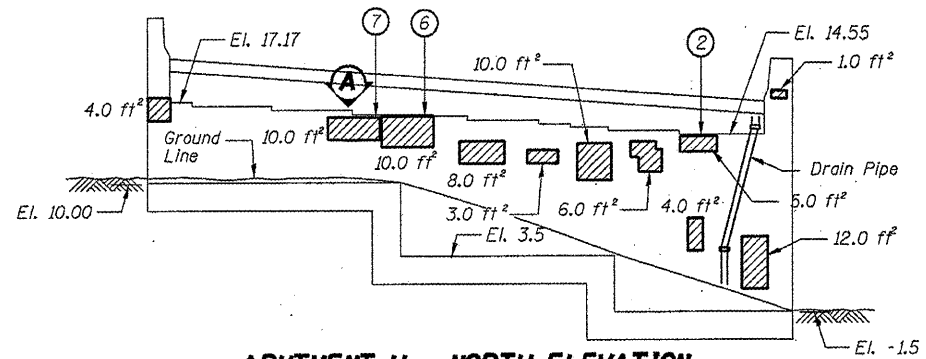
CONTRACT NO. 60P27



**PIER H3 - SOUTH ELEVATION**  
(Looking North)



**PIER H3 - NORTH ELEVATION**  
(Looking South)



**ABUTMENT H - NORTH ELEVATION**  
(Looking South)

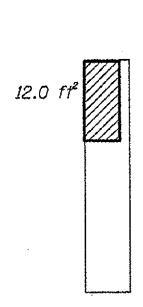
- Structural Repair of Concrete (Depth equal to or less than 5")
  - Structural Repair of Concrete (Depth greater than 5")
  - Beam # - Temporary Shoring and Cribbing
- See Sheet 21 for location of beam.

**PIER H3 - VIEW A**  
Looking East at Side of Pedestal

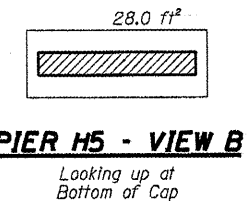
**PIER H3 - VIEW B**  
Looking West at Side of Pedestal

**PIER H3 - VIEW D**  
Looking East at Side of Pedestal

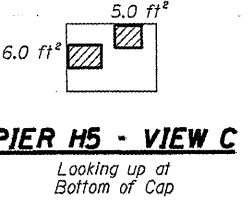
**PIER H3 - VIEW E**  
Looking West at Side of Pedestal



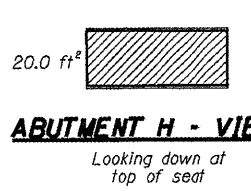
**PIER H5 - VIEW A**  
Looking East at Side of Column



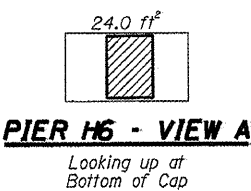
**PIER H5 - VIEW B**  
Looking up at Bottom of Cap



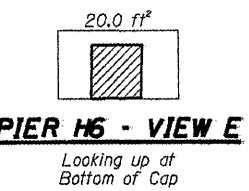
**PIER H5 - VIEW C**  
Looking up at Bottom of Cap



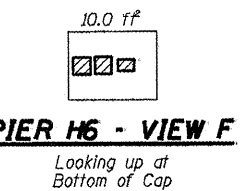
**ABUTMENT H - VIEW A**  
Looking down at top of seat



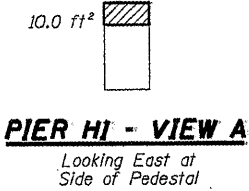
**PIER H6 - VIEW A**  
Looking up at Bottom of Cap



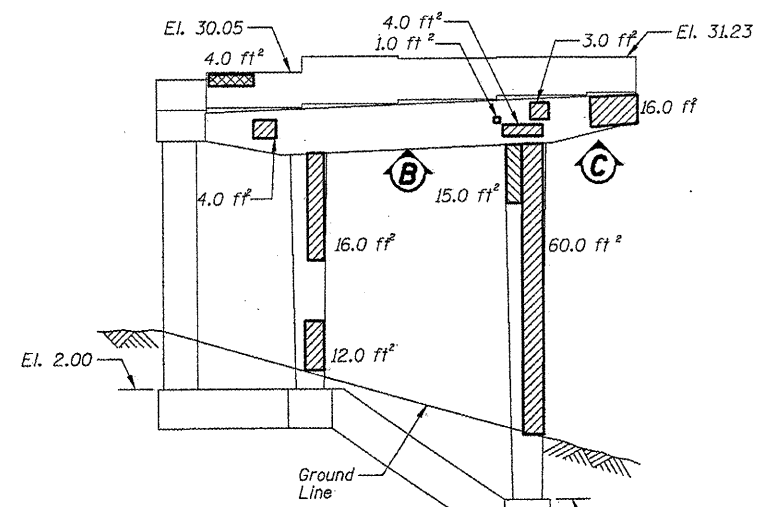
**PIER H6 - VIEW E**  
Looking up at Bottom of Cap



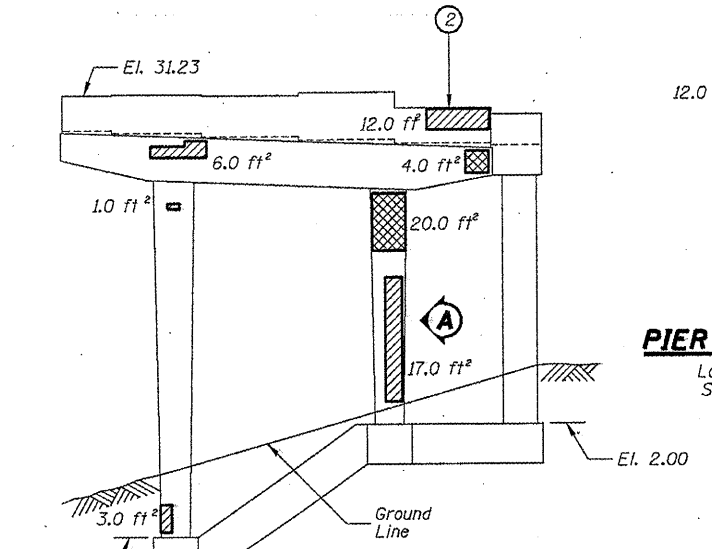
**PIER H6 - VIEW F**  
Looking up at Bottom of Cap



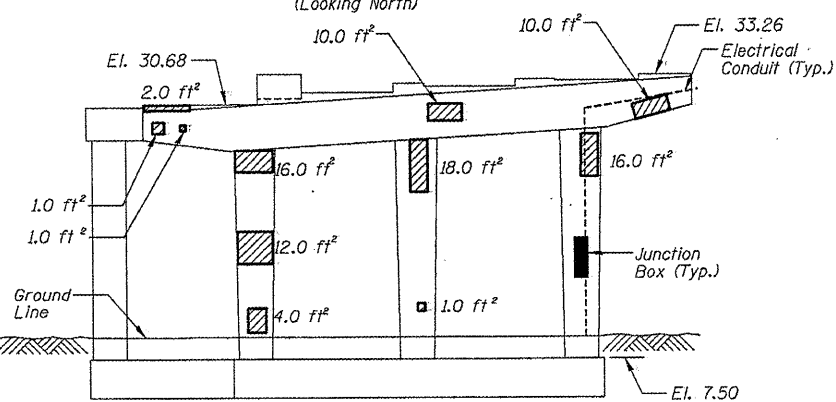
**PIER H1 - VIEW A**  
Looking East at Side of Pedestal



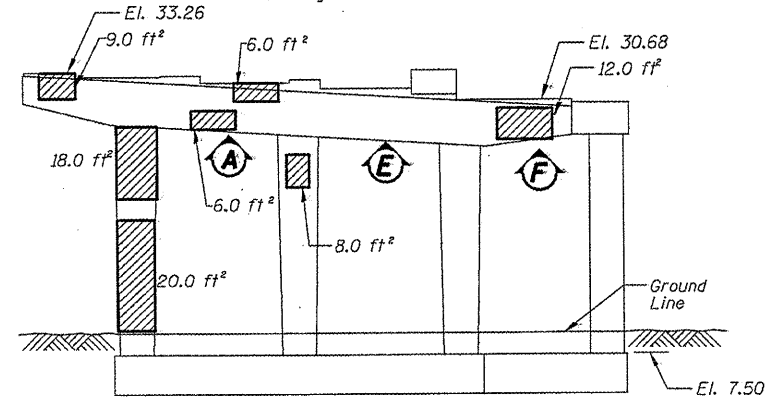
**PIER H5 - SOUTH ELEVATION**  
(Looking North)



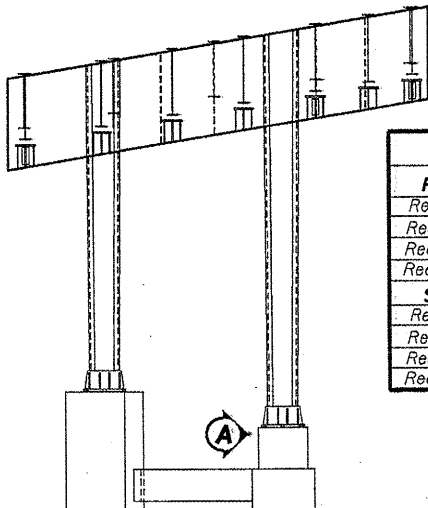
**PIER H5 - NORTH ELEVATION**  
(Looking South)



**PIER H6 - ELEVATION**  
(Looking West)



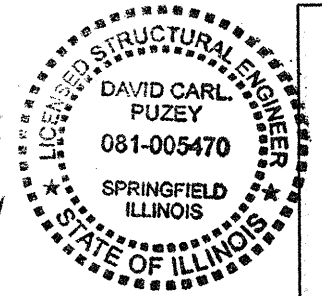
**PIER H6 - ELEVATION**  
(Looking East)



**PIER H1 - SOUTH ELEVATION**  
(Looking North)

REACTION TABLE	
<b>PIER H5</b>	<b>SPAN H6</b>
Reaction DL	4.5 kips
Reaction LL	14.6 kips
Reaction Impact	4.4 kips
Reaction Total	23.5 kips
<b>S. Abut. H</b>	<b>SPAN H1</b>
Reaction DL	23.6 kips
Reaction LL	34.3 kips
Reaction Impact	9.3 kips
Reaction Total	67.2 kips

BILL OF MATERIAL		
ITEM	UNIT	QUANTITY
Structural Repair of Concrete (Depth equal to or less than 5")	SQ. FT.	674.0
Structural Repair of Concrete (Depth greater than 5")	SQ. FT.	28.0
Temporary Shoring and Cribbing	EACH	4



*Dr. Carl Puzey* 5/13/11  
Expires 11/30/2012

ILLINOIS DEPARTMENT OF  
TRANSPORTATION  
I-90/94 (DAN RYAN EXPRESSWAY)  
SUBSTRUCTURE REPAIRS  
SN 016-1118  
PIERS H3, H5, H6, & ABUT. H