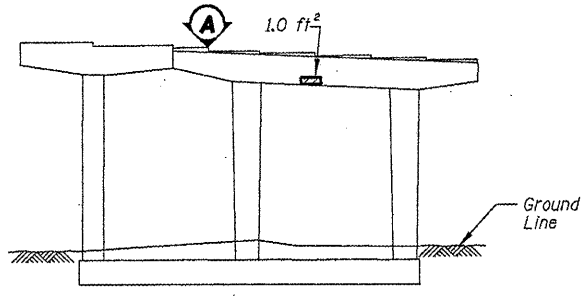
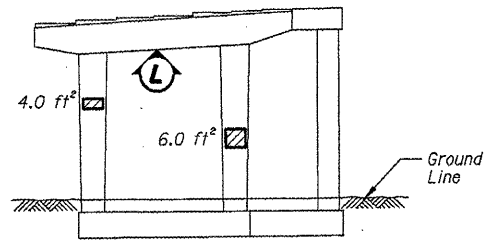


ROUTE FAI 90/94	SECTION 2011-027-I	COUNTY COOK	TOTAL SHEETS 87	SHEET NUMBER 64
--------------------	-----------------------	----------------	--------------------	--------------------

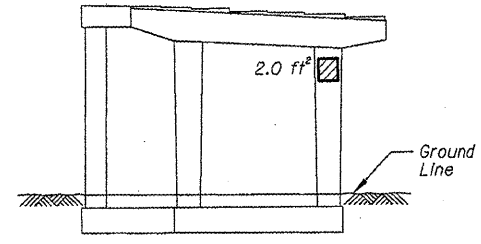
CONTRACT NO. 60P27



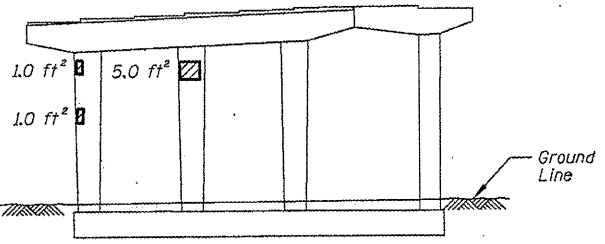
PIER A15- NORTH ELEVATION
(Looking South)



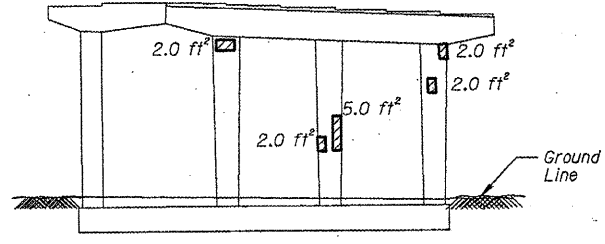
PIER A10- SOUTH ELEVATION
(Looking North)



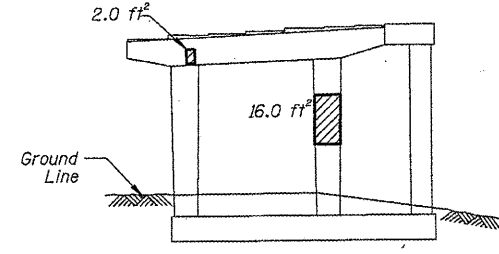
PIER A10- NORTH ELEVATION
(Looking South)



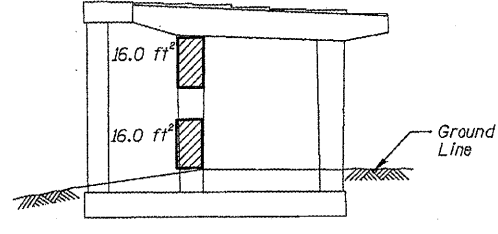
PIER A14- SOUTH ELEVATION
(Looking North)



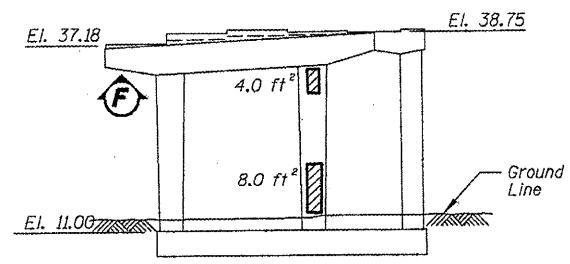
PIER A14- NORTH ELEVATION
(Looking South)



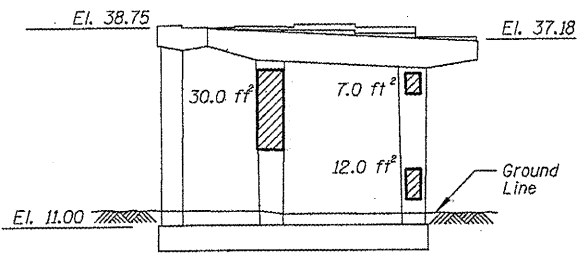
PIER A9- SOUTH ELEVATION
(Looking North)



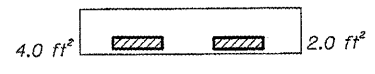
PIER A9- NORTH ELEVATION
(Looking South)



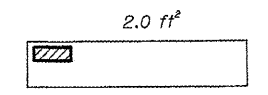
PIER A12- SOUTH ELEVATION
(Looking North)



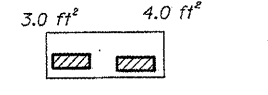
PIER A12- NORTH ELEVATION
(Looking South)



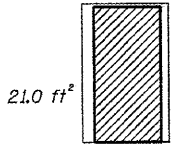
PIER A15- VIEW A
Looking down at top of seat



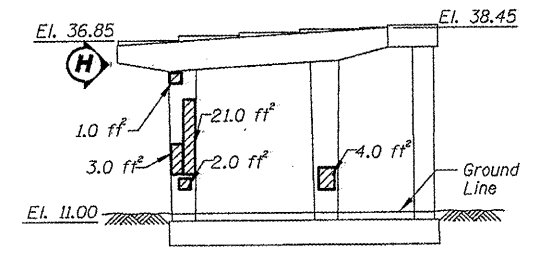
PIER A10- VIEW L
Looking up at bottom of cap



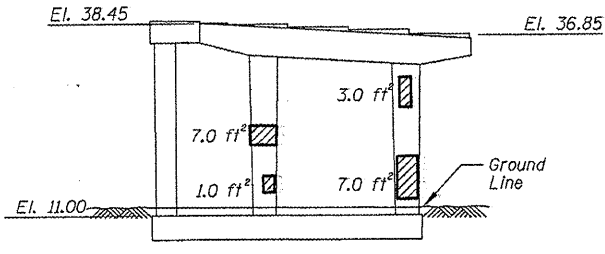
PIER A12- VIEW F
Looking up at bottom of cap



PIER A11- VIEW H
Looking East at end of cap



PIER A11- SOUTH ELEVATION
(Looking North)



PIER A11- NORTH ELEVATION
(Looking South)

BILL OF MATERIAL

ITEM	UNIT	QUANTITY
Structural Repair of Concrete (Depth equal to or less than 5")	SQ. FT.	229.0

▨ - Structural Repair of Concrete (Depth equal to or less than 5")

ILLINOIS DEPARTMENT OF
TRANSPORTATION

I-90/94 (DAN RYAN EXPRESSWAY)
SUBSTRUCTURE REPAIRS
SN 016-1067
PIERS A9 - A12, A14, & A15