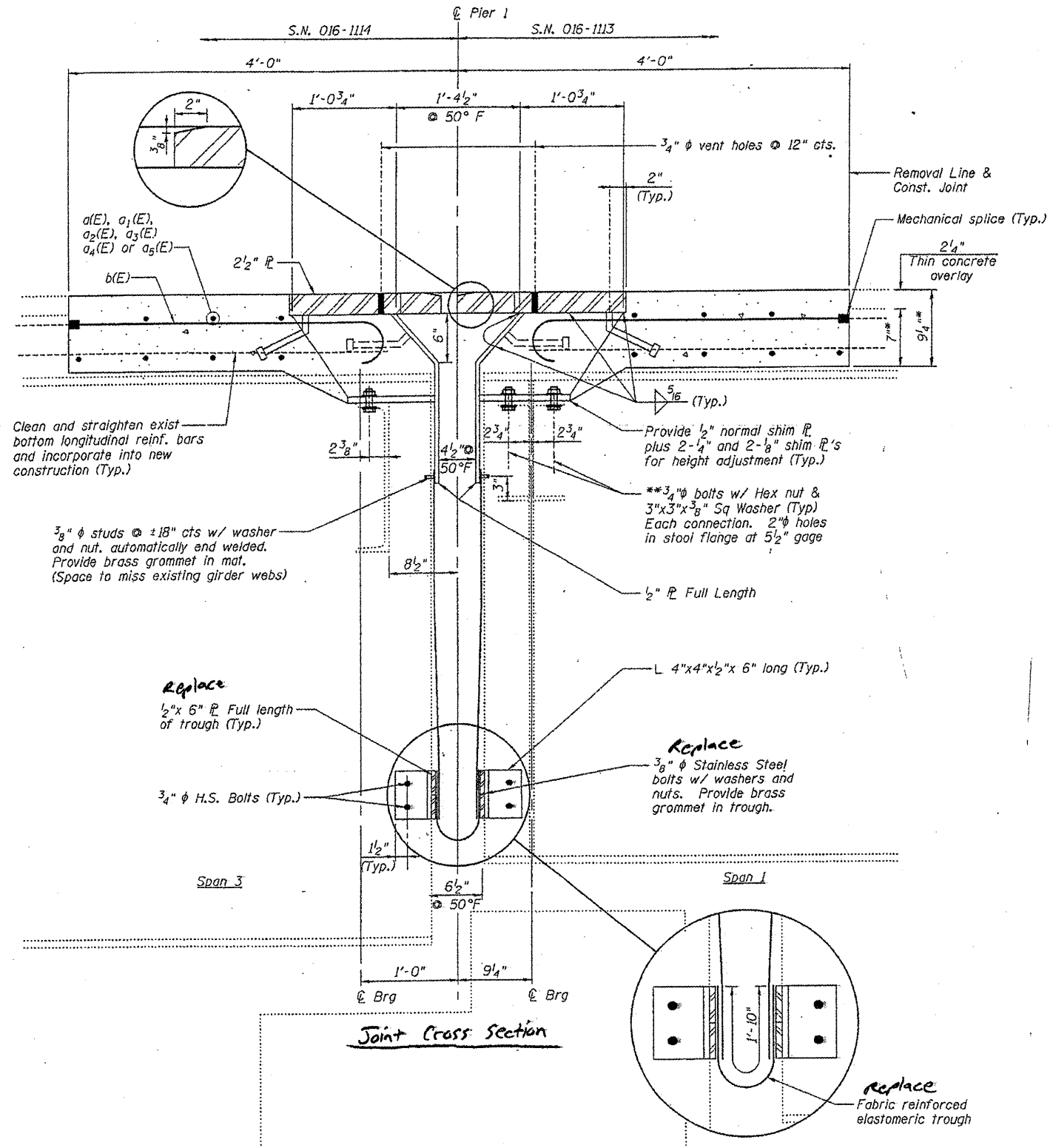


ROUTE	SECTION	COUNTY	TOTAL SHEETS	SHEET NUMBER
FAI 90/94	2011-027-1	COOK	87	84

CONTRACT NO. 60P27



Clean and straighten exist bottom longitudinal reinf. bars and incorporate into new construction (Typ.)

3/8"  $\phi$  studs @  $\pm 18"$  cts w/ washer and nut, automatically end welded. Provide brass grommet in mat. (Space to miss existing girder webs)

Replace 1/2" x 6"  $\bar{R}$  Full length of trough (Typ.)

3/4"  $\phi$  H.S. Bolts (Typ.)

Replace 3/8"  $\phi$  Stainless Steel bolts w/ washers and nuts. Provide brass grommet in trough.

replace Fabric reinforced elastomeric trough

**BILL OF MATERIAL**

ITEM	UNIT	QUANTITY
Bridge Drainage System Repairs	FT.	196.0

**DRAINAGE REPAIR NOTES**

- The Contractor shall replace the Fabric Reinforced Elastomeric Trough, splices, & stainless steel bolts with washers & nuts as detailed & according to 520 of the Standard Specifications. The length of neoprene trough required is included in the quantity for "Bridge Drainage System Repairs". Removal of existing finger plate trough & any debris is included in the cost of "Bridge Drainage System Repairs".

ILLINOIS DEPARTMENT OF  
TRANSPORTATION  
  
I-90/94 (DAN RYAN EXPRESSWAY)  
DRAINAGE SYSTEM REPAIRS  
SN 016-1113  
PIER 1 NB & SB  
SHEET 2 OF 2