

ROUTE	SECTION	COUNTY	TOTAL SHEETS	SHEET NUMBER
FAP 348	0708.08-BR	COOK	6	1

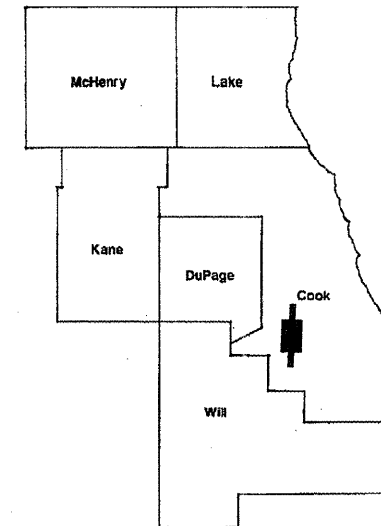
FOR INDEX OF SHEETS SEE SHEET 2

IMPROVEMENT IS LOCATED IN THE VILLAGE OF FOREST VIEW.

**STATE OF ILLINOIS
DEPARTMENT OF TRANSPORTATION
DIVISION OF HIGHWAYS
DISTRICT ONE
PROPOSED HIGHWAY PLANS**

CONTRACT NO 60P28

D-91-499-11

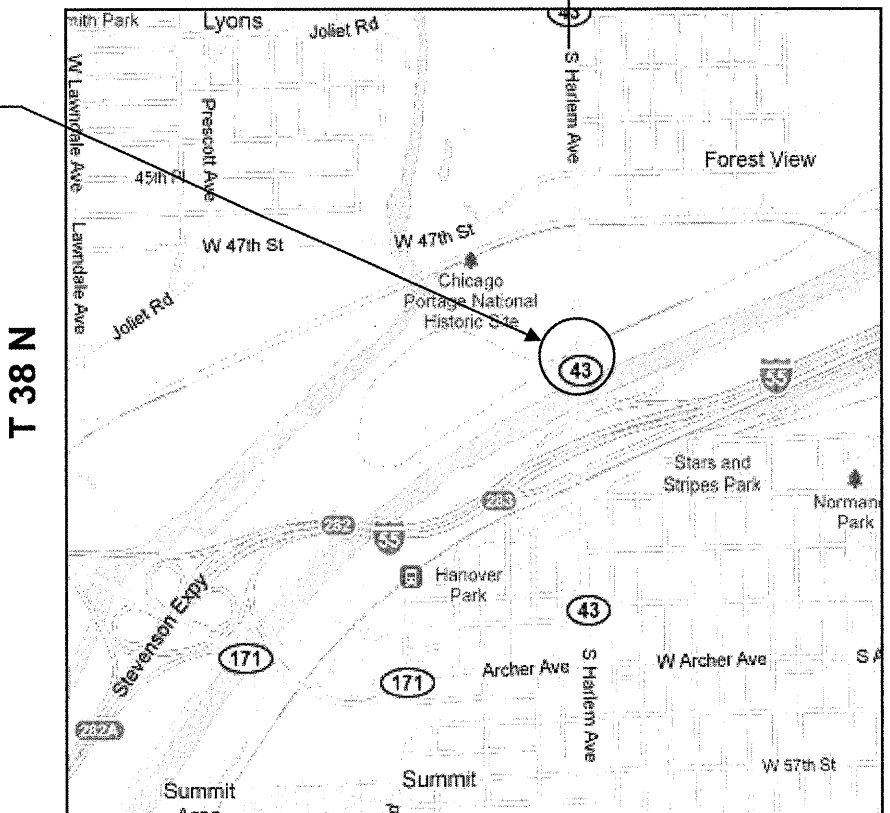


**FAP ROUTE 348: IL 43 NB (HARLEM AVE)
OVER CN & MWRD (SLUDGE) RR
SECTION: 0708.08-BR
PCC DECK BEAM SUPPORTS
COOK COUNTY
C-91-499-11**

R 12 E R 13 E

LOCATION OF IMPROVEMENT INDICATED THUS:

LOCATION OF IMPROVEMENT
SN 016-0314



TRAFFIC DATA
2009 ADT = 19,000
POSTED SPEED LIMIT = 40 MPH

PROJECT ENGINEER ROBERT BORO (847) 705-4178
PROJECT MANAGER ISSAM RAYYAN
CONTRACT NO. 60P28

STICKNEY TOWNSHIP

**STATE OF ILLINOIS
DEPARTMENT OF TRANSPORTATION
DIVISION OF HIGHWAYS**

SUBMITTED: APRIL 8 2011
Diana M. O'Keefe
DEPUTY DIRECTOR OF HIGHWAYS, REGION ENGINEER

May 13 2011
Scott E. Stapp
acting ENGINEER OF DESIGN AND ENVIRONMENT

May 13 2011
Christene M. Reed
DIRECTOR, DIVISION OF HIGHWAYS

**PRINTED BY THE AUTHORITY
OF THE STATE OF ILLINOIS**

J.U.L.I.E.
JOINT UTILITY LOCATION INFORMATION
FOR EXCAVATION (800) 892-0123 OR 811

ROUTE	SECTION	COUNTY	TOTAL SHEETS	SHEET NUMBER
FAP 348	0708.08-BR	COOK	6	2

CONTRACT NO 60P28

INDEX OF SHEETS

1	TITLE SHEET
2	INDEX OF SHEETS, STATE STANDARDS, GENERAL NOTES
3	SUMMARY OF QUANTITIES
4 - 5	BRIDGE REPAIRS
6	ARTERIAL ROAD INFORMATION SIGN (TC-22)

STATE STANDARDS

701601-07	URBAN LANE CLOSURE, MULTILANE, 1W OR 2W WITH NONTRAVERSABLE MEDIAN
701901-01	TRAFFIC CONTROL DEVICES

GENERAL NOTES

BEFORE STARTING ANY EXCAVATION, THE CONTRACTOR SHALL CALL "J.U.L.I.E." AT (800) 892-0123 OR 811 FOR FIELD LOCATIONS OF BURIED ELECTRIC, TELEPHONE AND GAS UTILITIES. 48 HOUR NOTIFICATION IS REQUIRED.

THE CONTRACTOR SHALL COORDINATE CONSTRUCTION ACTIVITIES WITH UTILITY COMPANIES AND THE VILLAGE OF FOREST VIEW.

THE CONTRACTOR WILL NOT BE ALLOWED TO SET UP A YARD OR FIELD OFFICE ON STATE PROPERTY WITHOUT WRITTEN PERMISSION FROM THE DEPARTMENT.

THE CONTRACTOR SHALL CONTACT THE DISTRICT ONE TRAFFIC CONTROL SUPERVISOR AT (847) 741- 4470 A MINIMUM OF 72 HOURS IN ADVANCE OF BEGINNING WORK.

THE CONTRACTOR SHALL BE REQUIRED TO PROVIDE ACCESS TO ABUTTING PROPERTY AT ALL TIMES DURING THE CONSTRUCTION OF THIS PROJECT.

DO NOT SCALE PLANS FOR CONSTRUCTION DIMENSIONS.

ILLINOIS DEPARTMENT OF TRANSPORTATION
INDEX OF SHEETS
LIST OF STATE STANDARDS
GENERAL NOTES

ROUTE	SECTION	COUNTY	TOTAL SHEETS	SHEET NUMBER
FAP 348	0708.08-BR	COOK	6	3

CONTRACT NO.: 60P28

SUMMARY OF QUANTITIES		CONSTRUCTION TYPE CODE: 0014		
CODE NO.	ITEMS	UNITS	URBAN 100% STATE TOTAL QUANTITIES	
50500405	FURNISHING AND ERECTING STRUCTURAL STEEL	POUND	8020	
67100100	MOBILIZATION	L SUM	1	
70102630	TRAFFIC CONTROL AND PROTECTION, STANDARD 701601	L SUM	1	
Z0030850	TEMPORARY INFORMATION SIGNING	SQ FT	25.7	
Z0048665	RAILROAD PROTECTIVE LIABILITY INSURANCE	LSUM	1	

ILLINOIS DEPARTMENT OF TRANSPORTATION
 IL 43 NB (HARLEM AVE)
 SN 016-0314
 SUMMARY OF QUANTITIES

GENERAL NOTES

All structural steel shall conform to AASHTO Classification M-270 Gr. 36, unless otherwise noted.

Plan dimensions and details relative to existing plans are subject to nominal construction variations. The Contractor shall field verify existing dimensions and details affecting new construction and make necessary approved adjustments prior to construction or ordering of materials. Such variations shall not be cause for additional compensation for a change in scope of the work, however, the Contractor will be paid for the quantity actually furnished at the unit price bid for the work.

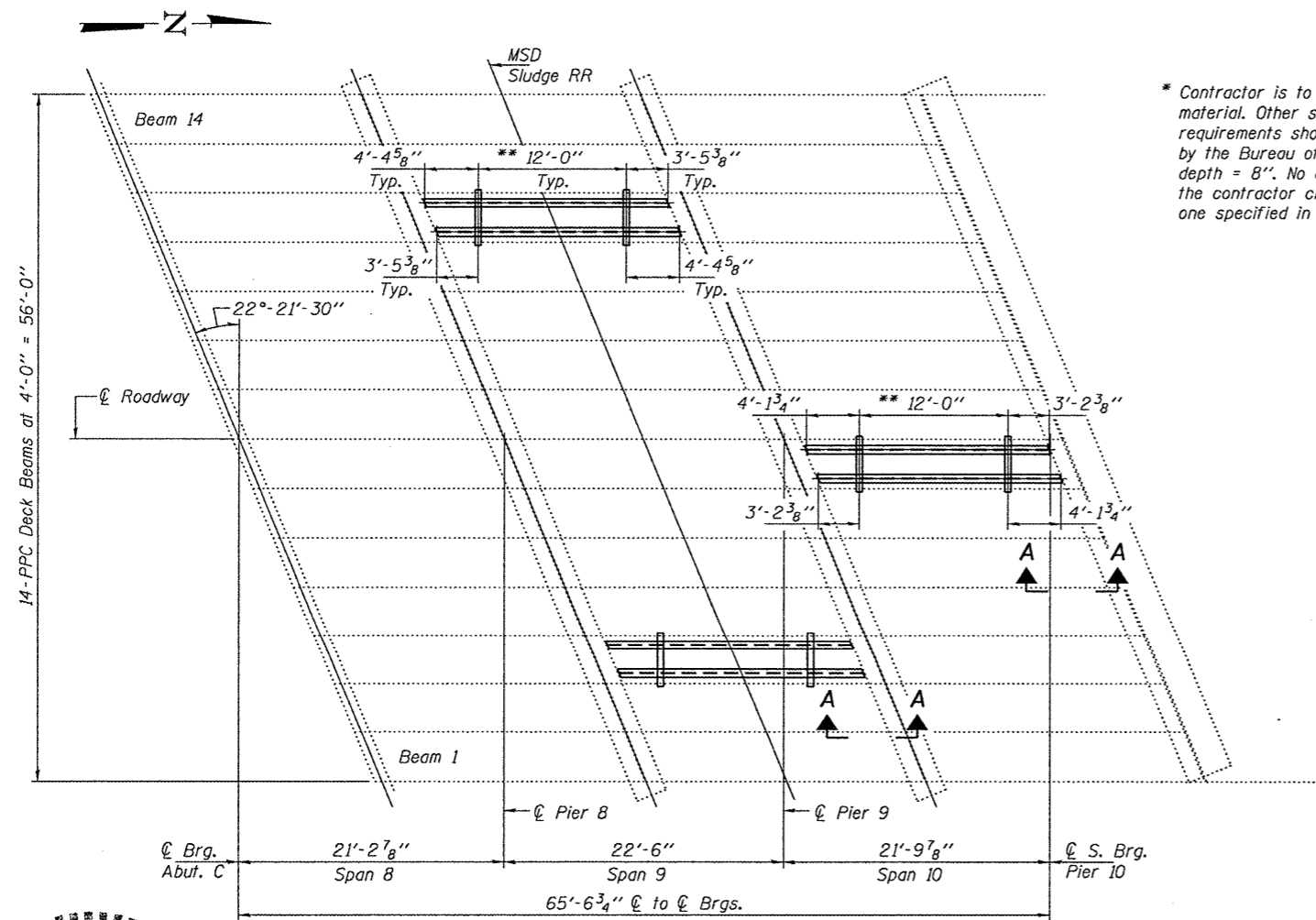
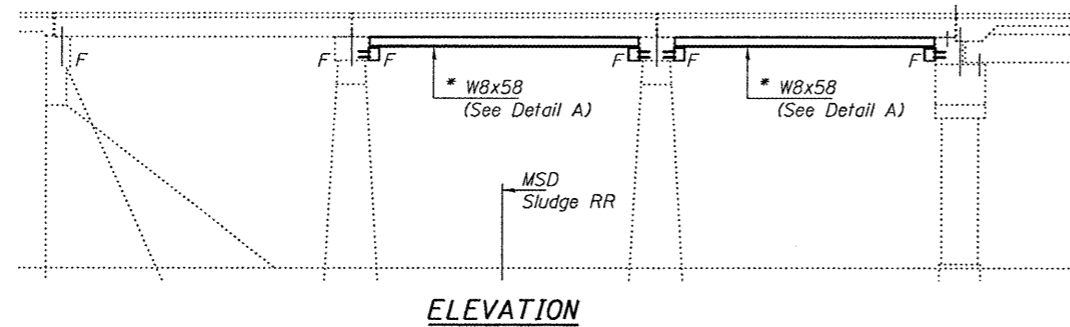
The contractor is advised that the existing PPC Deck Beams are in a deteriorated condition with reduced load carrying capacity. It is the contractor's responsibility to account for the condition of the beams when developing construction procedures.

See Section 584 of the Standard Specifications for Epoxy Grouting of Threaded Rods; Minimum embedment 9".

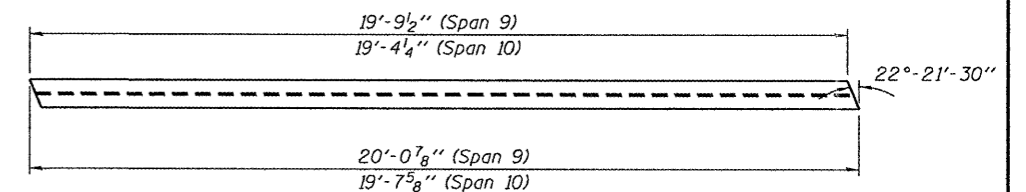
If the contractor's procedure for placement of beams involves placement of cranes or other heavy equipment on the bridge, a detailed procedure shall be submitted to the Engineer for approval. The procedure shall include calculations, prepared and sealed by an Illinois Licensed Structural Engineer, verifying that the equipment and procedure used will not overstress the existing beams. To distribute load to multiple beams and protect the existing surface, in all cases a double layer mat of heavy timbers shall be used at all times under crane tracks or wheels and any outriggers in the down position. If necessary, shims shall be used under the crane mat to ensure uniform contact with the underlying beams.

The cost of epoxy grouting threaded rods on the pier cap, abutments and beams shall be included with Furnishing and Erecting Structural Steel.

The Contractor has the option of using used steel. See Special Provisions.

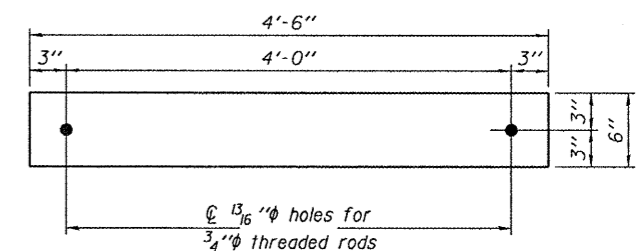


* Contractor is to verify beam length prior to ordering material. Other sections meeting the section modulus requirements shown may be allowed subject to approval by the Bureau of Bridges and Structures. Maximum Girder depth = 8'. No additional payment will be allowed if the contractor chooses a heavier steel section than the one specified in the plans. (Min. Sx = 52 in³)



DETAIL A

W8x58 x 20'-0 7/8" (4 Req'd)
W8x58 x 19'-7 5/8" (2 Req'd)



TRANSVERSE TIE P'S
P A 1/2" x 4'-6" x 6" (6 Req'd)

PLAN

For Section A-A, see sheet 2 of 2.

** \varnothing Transverse tie P's (2 per span). Place additional shims at midpoints between tie P's. Securely weld shims to top flange of support beam. Minimum shim size is 6" x flange width.



EXPIRES 11-30-2012

DESIGNED *Allen M. Puzey*
CHECKED *John A. B...*
DRAWN *baliva*
CHECKED *ADY*

EXAMINED *John F. Schmitt*
PASSED *John F. Schmitt*
ACTING ENGINEER OF STRUCTURAL SERVICES
ACTING ENGINEER OF BRIDGES AND STRUCTURES

DATE MAY 4, 2011

STATE OF ILLINOIS
DEPARTMENT OF TRANSPORTATION

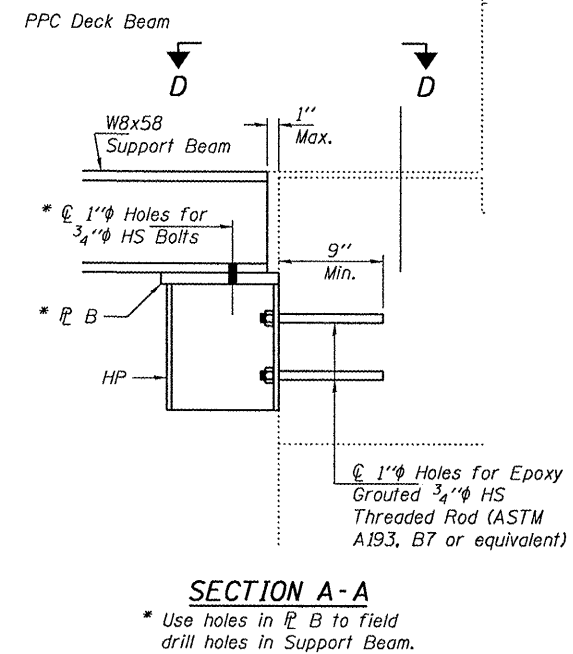
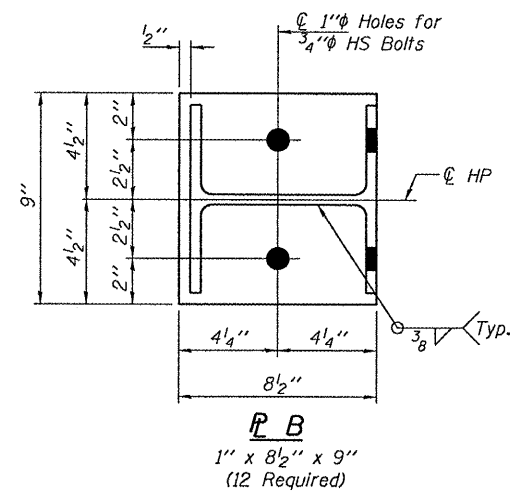
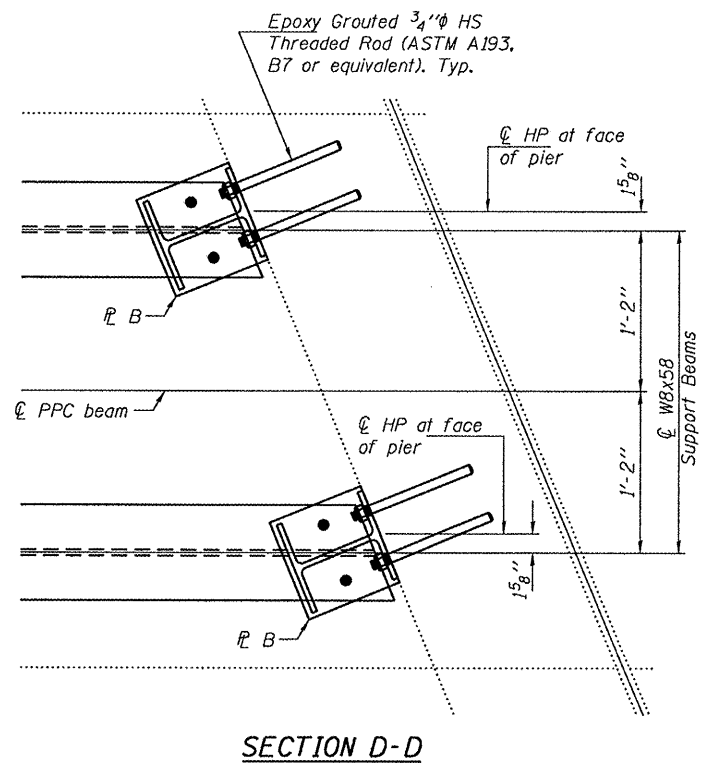
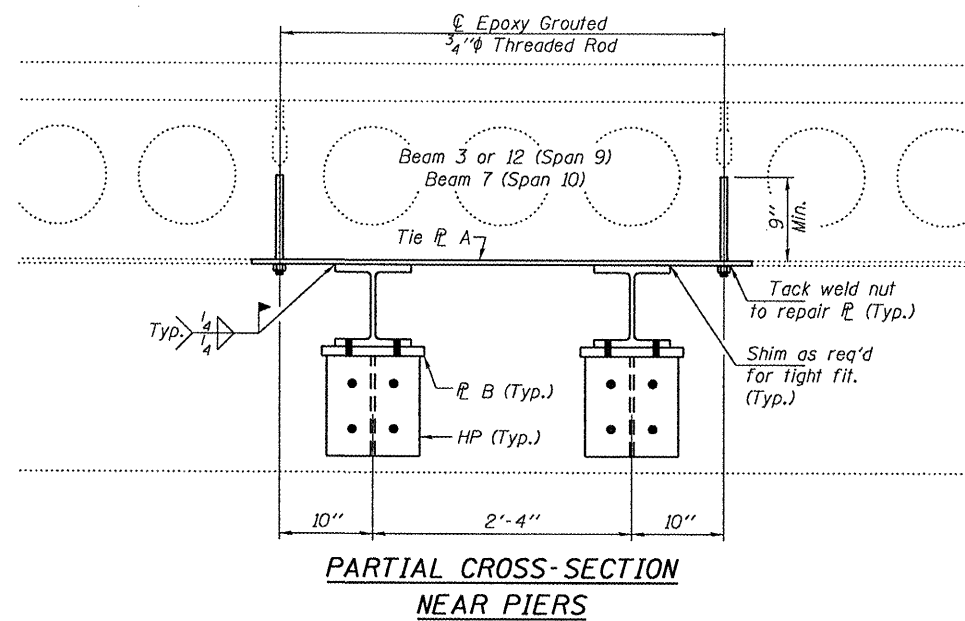
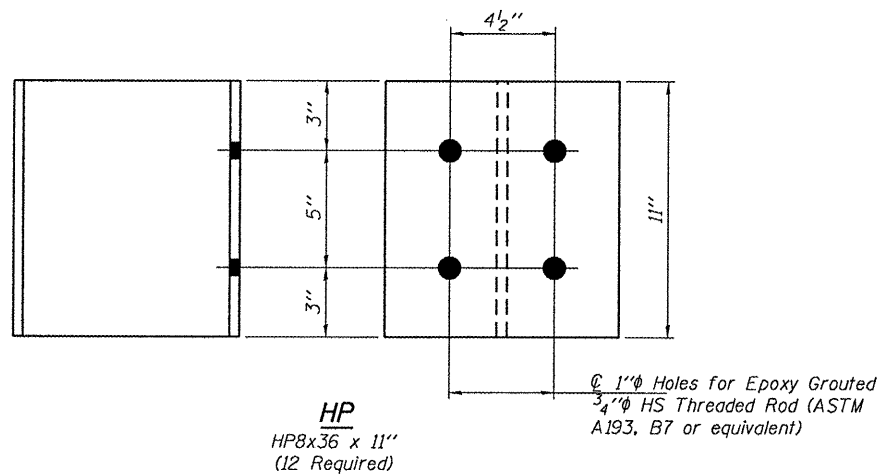
PLAN AND ELEVATION
016-0314

SHEET NO. 1 OF 2 SHEETS

F.A.P. RTE. 348	SECTION 0708.08-BR	COUNTY COOK	TOTAL SHEETS 6	SHEET NO. 4
CONTRACT NO. 60P28			[ILLINOIS] FED. AID PROJECT	

TOTAL BILL OF MATERIAL

ITEM	UNIT	QUANTITY
Furnishing and Erecting Structural Steel	Pound	8020



DESIGNED ADY
CHECKED DAB
DRAWN baliva
CHECKED ADY DAB

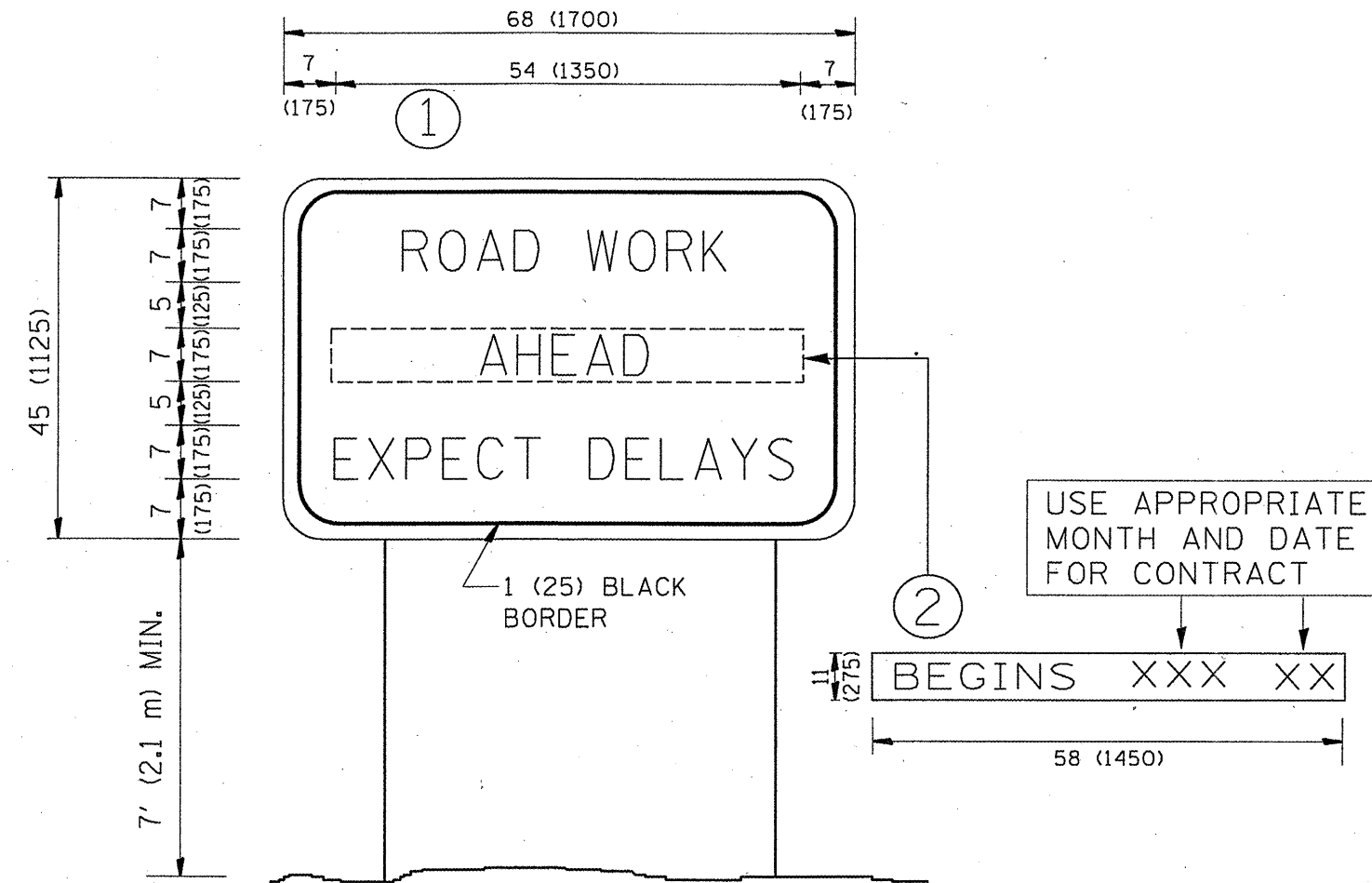
EXAMINED *Joanne F. J...* DATE MAY 4, 2011
PASSED ACTING ENGINEER OF STRUCTURAL SERVICES
ACTING ENGINEER OF BRIDGES AND STRUCTURES

STATE OF ILLINOIS
DEPARTMENT OF TRANSPORTATION

REPAIR DETAILS
SN 016-0314

SHEET NO. 2 OF 2 SHEETS

F.A.P. RTE.	SECTION	COUNTY	TOTAL SHEETS	SHEET NO.
348	0708.08-BR	COOK	6	5
CONTRACT NO. 60P28				
ILLINOIS FED. AID PROJECT				



NOTES:

1. USE BLACK LETTERING ON ORANGE BACKGROUND.
2. ERECT SIGNS IN ADVANCE OF THE LOCATION FOR THE "ROAD CONSTRUCTION AHEAD" SIGN AT LOCATIONS AS DIRECTED BY THE ENGINEER.
3. ERECT SIGN ① WITH INSTALLED PANEL ② ONE WEEK PRIOR TO THE START OF CONSTRUCTION.
4. REMOVE PANEL ② SOON AFTER THE START OF CONSTRUCTION.
5. SEE SPECIAL PROVISION FOR "TEMPORARY INFORMATION SIGNING" FOR ADDITIONAL INFORMATION.
6. ONE SIGN ASSEMBLY EQUALS 25.70 SQ. FT. (2.3 SQ. M.)
7. SHALL BE PAID FOR AS TEMPORARY INFORMATION SIGNING.

ALL DIMENSIONS ARE IN INCHES (MILLIMETERS) UNLESS OTHERWISE SHOWN.

FILE NAME = c:\pwwork\pwwork\mthenba\02065900\01s	USER NAME = mthenba	DESIGNED -	REVISED - R. MIRS 09-15-97	STATE OF ILLINOIS DEPARTMENT OF TRANSPORTATION	ARTERIAL ROAD INFORMATION SIGN	F.A.P. RTE.	SECTION	COUNTY	TOTAL SHEETS	SHEET NO.
Std.dgn	DRAWN -	REVISED - R. MIRS 12-11-97	348			0708.08-BR	COOK	6	6	
PLOT SCALE = 100.0000' / IN.	CHECKED -	REVISED - T. RAMMACHER 02-02-99	TC-22			CONTRACT NO. 60P28				
PLOT DATE = 3/15/2011	DATE -	REVISED - C. JUCIUS 01-31-07	SCALE: NONE			SHEET NO. 1 OF 1 SHEETS	STA.	TO STA.	FED. ROAD DIST. NO. 1 ILLINOIS FED. AID PROJECT	