

MATCHLINE STA. 3570+00

MATCHLINE STA. 3586+00

MATCHLINE STA. 3600+00

MATCHLINE STA. 3586+00

KENNEDY EXPY. C. STA. 3579+64.02
N. CENTRAL AVE. C. STA. 7+43.43 (OVERHEAD)

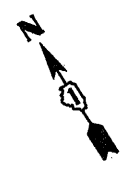
WESTBOUND

EASTBOUND

C.T.A. TRACK AREA

5" WHITE LANE LINE (TYP.)

4" WHITE SKIP-DASH LANE LINE
(2" DASH, 6" SPACING)



8" WHITE GORE LINE (TYP.)

WESTBOUND

EASTBOUND

C.T.A. TRACK AREA

4" YELLOW EDGE LINE (TYP.)

KENNEDY EXPY. C. STA. 3594+50.584

KENNEDY EXPY. C. STA. 3593+63.303

NOTE:

SEE DISTRICT DETAIL "MULTI-LANE FREEWAY
PAVEMENT MARKING DETAILS" FOR RAISED
REFLECTIVE PAVEMENT MARKERS AND OTHER
PAVEMENT MARKINGS.

FILE NAME = 0151111-sht-plan.dgn	USER NAME = nathanbo	DESIGNED -	REVISED -	STATE OF ILLINOIS DEPARTMENT OF TRANSPORTATION	I-90 (KENNEDY EXPRESSWAY) PROPOSED PLANS & PAVEMENT MARKING PLANS	F.A.I. RTE.	SECTION	COUNTY	TOTAL SHEETS	SHEET NO.
	PLOT SCALE = 100.0000' / IN.	DRAWN -	REVISED -			90	2011-029-I	COOK	20	13
	PLOT DATE = 4/7/2011	CHECKED -	REVISED -			CONTRACT NO. 60P32			ILLINOIS FED. AID PROJECT	
					SCALE: 1" = 50'	SHEET NO. OF SHEETS		STA. 3570+00 TO STA. 3600+00		

Rev. 6-2-11