

STATE OF ILLINOIS  
DEPARTMENT OF TRANSPORTATION  
DIVISION OF HIGHWAYS

**PROPOSED  
HIGHWAY PLANS**

F.A.I. ROUTE 90: I-90 (KENNEDY EXPRESSWAY)  
EAST RIVER ROAD TO I-90/94 (EDENS JUNCTION)  
SECTION: 2011-029-I  
CRACK & JOINT SEALING  
COOK COUNTY  
C-91-511-11

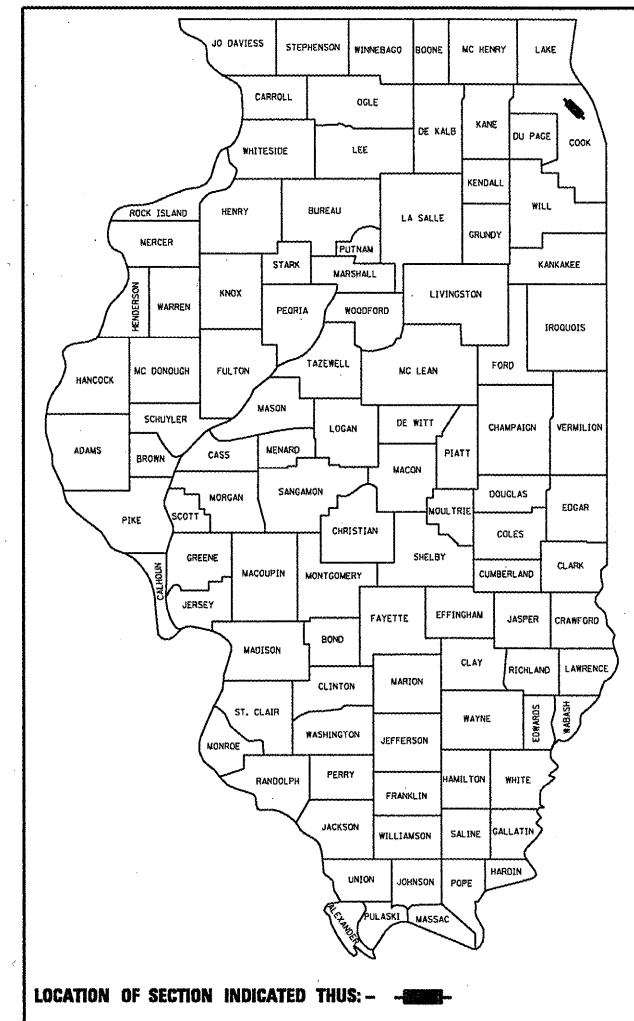
F.A.I. RTE.	SECTION	COUNTY	TOTAL SHEETS	SHEET NO.
90	2011-029-I	COOK	20	1
ILLINOIS CONTRACT NO. 60P32				

20 + 1 = 21

D-91-511-11

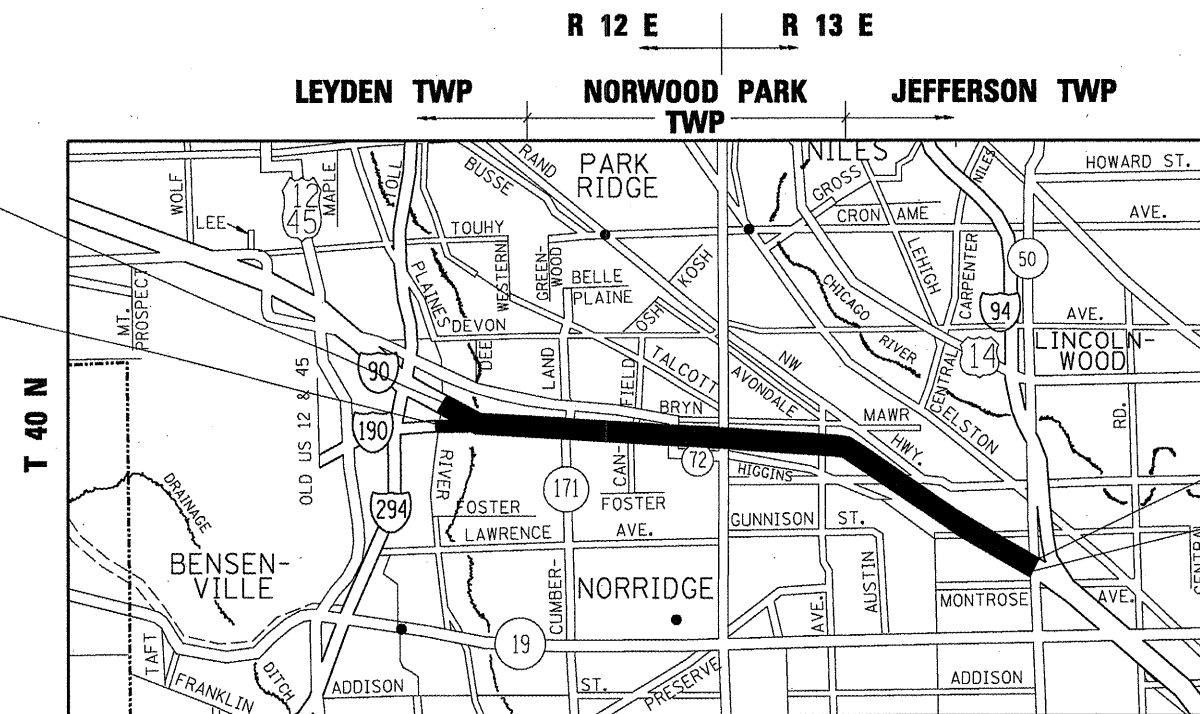
FOR INDEX OF SHEETS, SEE SHEET NO. 2

IMPROVEMENT LOCATED  
IN THE CITY OF CHICAGO



IMPROVEMENT BEGINS  
WESTBOUND STATION 3341 + 21

IMPROVEMENT BEGINS  
EASTBOUND STATION 3341 + 21



IMPROVEMENT ENDS  
WESTBOUND STATION 3645 + 80

IMPROVEMENT ENDS  
EASTBOUND STATION 3646 + 77

**TRAFFIC DATA**

2010 ADT = 212,100

POSTED SPEED LIMIT = 55 MPH

C.U.A.N.  
CHICAGO UTILITY ALERT NETWORK  
1-312-744-7000

LEYDEN, NORWOOD PARK, & JEFFERSON TOWNSHIPS

PROJECT ENGINEER: ROBERT BORO (847) 705-4178

PROJECT MANAGER: ISSAM RAYYAN

CONTRACT NO. 60P32

GROSS AND NET LENGTH OF IMPROVEMENT (WESTBOUND) = 30,459 LIN FT = 5.77 MILES

GROSS AND NET LENGTH OF IMPROVEMENT (EASTBOUND) = 30,556 LIN FT = 5.79 MILES

STATE OF ILLINOIS  
DEPARTMENT OF TRANSPORTATION  
DIVISION OF HIGHWAYS

SUBMITTED APRIL 8 20 11  
*Diane M. O'Keefe* DEPUTY DIRECTOR OF HIGHWAYS, REGION ENGINEER

MAY 13 20 11  
*Scott E. Stitt, P.E.* acting ENGINEER OF DESIGN AND ENVIRONMENT

MAY 13 20 11  
*Christine M. Reed* DIRECTOR OF HIGHWAYS, CHIEF ENGINEER

PRINTED BY THE AUTHORITY  
OF THE STATE OF ILLINOIS

Rev. 6-2-11

**INDEX OF SHEETS**

SHEET NO.	DESCRIPTION
1	TITLE SHEET
2	INDEX OF SHEETS, STATE STANDARDS AND GENERAL NOTES
3	SUMMARY OF QUANTITIES
4 - 15	PROPOSED PLANS AND PAVEMENT MARKING PLANS
16	CRACK & JOINT SEALING DETAIL
17	TRAFFIC CONTROL DETAILS FOR FREEWAY SINGLE & MULTI-LANE WEAVE (TC-09)
18 - 19	MULTI-LANE FREEWAY PAVEMENT MARKING DETAILS (TC-12)
20	TRAFFIC CONTROL DETAILS FOR FREEWAY SHOULDER CLOSURES AND PARTIAL RAMP CLOSURES (TC-17)

20A. TC-8 

**STANDARDS**

- 701400-05 APPROACH TO LANE CLOSURE, FREEWAY/EXPRESSWAY
- 701401-06 LANE CLOSURE, FREEWAY/EXPRESSWAY
- 701411-07 LANE CLOSURE, MULTILANE, AT ENTRANCE OR EXIT RAMP, FOR SPEEDS ≥ 45 MPH
- 701426-04 LANE CLOSURE, MULTILANE, INTERMITTENT OR MOVING OPER., FOR SPEEDS ≥ 45 MPH
- 701446-02 TWO LANE CLOSURE FREEWAY/EXPRESSWAY
- 701901-01 TRAFFIC CONTROL DEVICES

**GENERAL NOTES**

BEFORE STARTING ANY EXCAVATION, THE CONTRACTOR SHALL CALL "C.U.A.N." (CHICAGO UTILITY ALERT NETWORK) AT (312)744-7000 FOR FIELD LOCATIONS OF BURIED ELECTRIC, TELEPHONE AND GAS UTILITIES. (48 HOUR NOTIFICATION IS REQUIRED).

THE CONTRACTOR WILL NOT BE ALLOWED TO SET UP A YARD OR FIELD OFFICE ON STATE PROPERTY WITHOUT WRITTEN PERMISSION FROM THE DEPARTMENT.

THE CONTRACTOR WILL NOT BE ALLOWED TO SET UP A YARD OR FIELD OFFICE ON TOLLWAY PROPERTY WITHOUT WRITTEN PERMISSION FROM THE ISTHA.

IT SHALL BE THE CONTRACTOR'S RESPONSIBILITY TO VERIFY ALL DIMENSIONS AND CONDITIONS EXISTING IN THE FIELD PRIOR TO CONSTRUCTION AND ORDERING OF MATERIALS.


THE CONTRACTOR SHALL CONTACT THE DISTRICT ONE TRAFFIC CONTROL SUPERVISOR AT (847) 705-4151 A MINIMUM OF 72 HOURS IN ADVANCE OF BEGINNING WORK.

THE ILLINOIS STATE TOLL HIGHWAY AUTHORITY SHALL BE NOTIFIED AT LEAST 48 HOURS IN ADVANCE FOR ANY LANE CLOSURE DURING THE AM AND PM PEAK HOURS FOR WORK ADJACENT TO THE NORTHWEST TOLLWAY SECTION. ISTHA DAILY TRAFFIC CONTROL AUTHORIZATION AT (630) 241-6800 EXT 3822

THE ENGINEER SHALL CONTACT THE DISTRICT ONE TRAFFIC CONTROL SUPERVISOR, AT (847) 705-4151 A MINIMUM OF TWO (2) WEEKS PRIOR TO THE PLACEMENT OF PERMANENT PAVEMENT MARKINGS.

ALL CRACK ROUTING & CRACK SEALING LOCATIONS WILL BE DETERMINED IN THE FIELD BY THE ENGINEER. CRACK ROUTING SHALL BE OMITTED WHERE VEHICLE DETECTOR LOOPS & RAISED REFLECTIVE PAVEMENT MARKERS ARE PRESENT IN THE PAVEMENT.

DO NOT SCALE PLANS FOR CONSTRUCTION DIMENSIONS.

 Rev. 6-2-11

FILE NAME = D151111-sh-t-plan.dgn	USER NAME = nathanbc	DESIGNED - DRAWN -	REVISED - REVISED -	<b>STATE OF ILLINOIS DEPARTMENT OF TRANSPORTATION</b>	<b>I-90 (KENNEDY EXPRESSWAY) INDEX OF SHEETS, LIST OF STATE STANDARDS &amp; PLAN NOTES</b>	F.A.I. RTE. 90	SECTION 2011-029-1	COUNTY COOK	TOTAL SHEETS 20	SHEET NO. 2	
PLOT SCALE = 100.0000' / IN.	CHECKED -	REVISED -	SCALE: 1"= 50'			SHEET NO. OF SHEETS	STA. TO STA.	CONTRACT NO. 60P32		ILLINOIS FED. AID PROJECT	
PLOT DATE = 4/8/2011	DATE -	REVISED -									

<b>ROUTE</b>	<b>SECTION</b>	<b>COUNTY</b>	<b>TOTAL SHEETS</b>	<b>SHEET NUMBER</b>
FAI- 90	2011-029-I	COOK	20	3

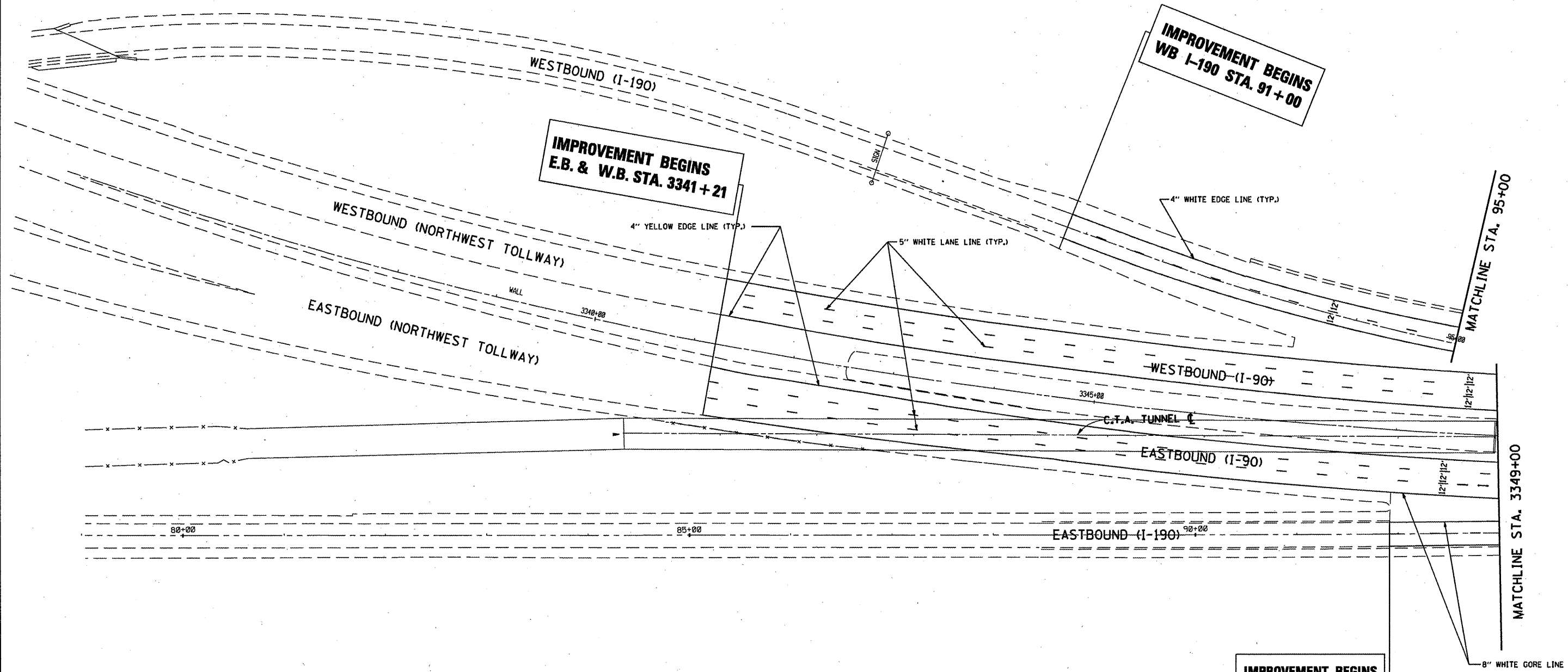
CONTRACT NO. 60P32

<b>SUMMARY OF QUANTITIES</b>				
<i>URBAN 100% STATE</i>				
CODE NO	DESCRIPTION	UNITS	TOTAL	CONSTRUCTION TYPE CODE: 0005
45100100	CRACK ROUTING (PAVEMENT)	FOOT	360125	360125
45100200	CRACK FILLING	POUND	136848	136848
67100100	MOBILIZATION	L SUM	1	1
X7011015	TRAFFIC CONTROL AND PROTECTION (EXPRESSWAYS)	L SUM	1	1
X7800815	HOT SPRAY THERMOPLASTIC PAVEMENT MARKING LINE - 4 INCH	FOOT	96147	96147
* X7800825	HOT SPRAY THERMOPLASTIC PAVEMENT MARKING LINE - 5 INCH	FOOT	35,338	35,338 <sup>⚠</sup>
* X7800845	HOT SPRAY THERMOPLASTIC PAVEMENT MARKING LINE - 8 INCH	FOOT	29238	29238
<i>*Specialty Items</i>				

ILLINOIS DEPARTMENT OF  
TRANSPORTATION

**SUMMARY OF QUANTITIES**

⚠ Rev. 6-2-11



**IMPROVEMENT BEGINS  
E.B. & W.B. STA. 3341+21**

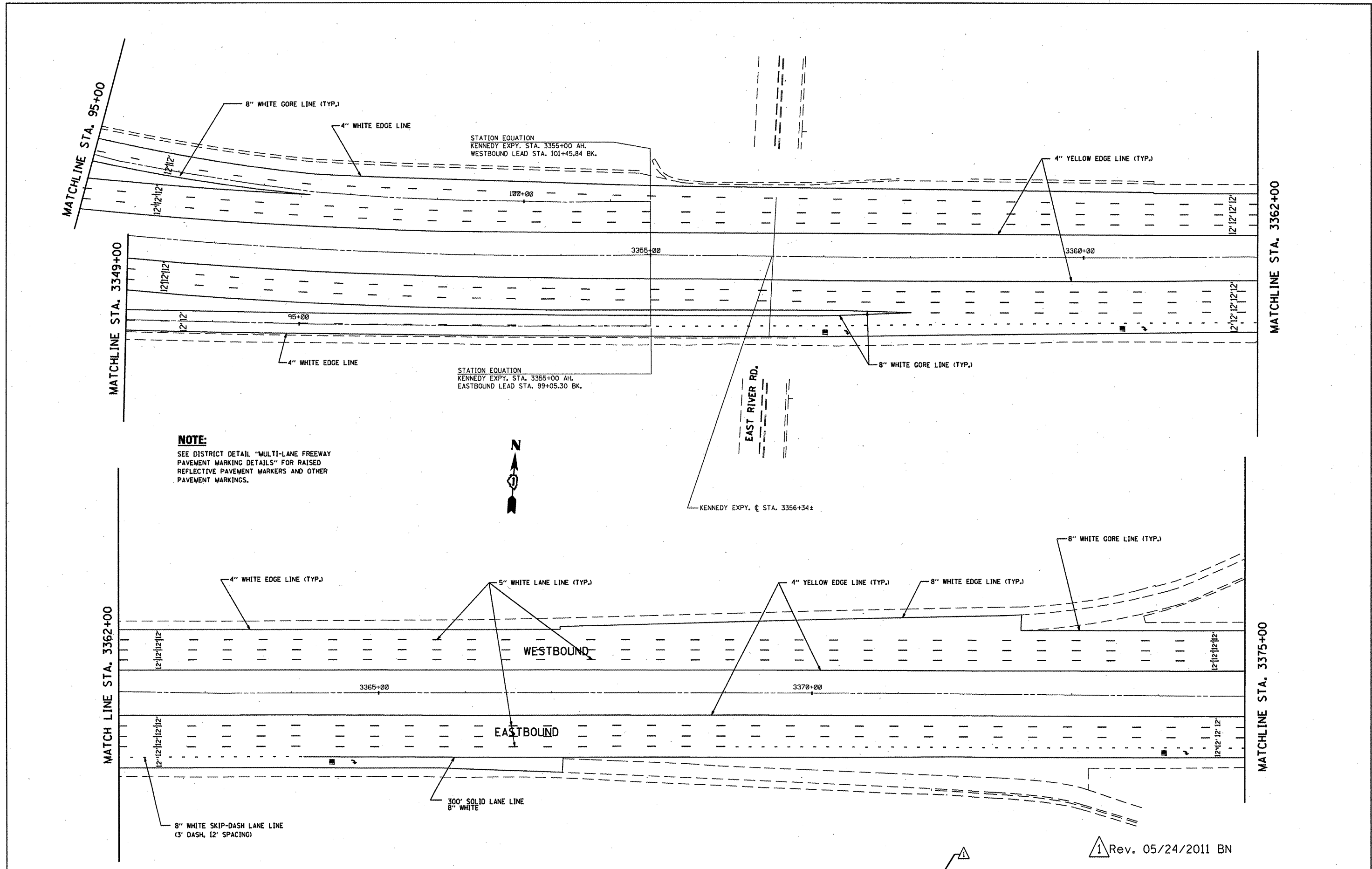
**IMPROVEMENT BEGINS  
WB I-190 STA. 91+00**

**IMPROVEMENT BEGINS  
EB I-190 STA. 91+91**

**NOTE:**  
SEE DISTRICT DETAIL "MULTI-LANE FREEWAY  
PAVEMENT MARKING DETAILS" FOR RAISED  
REFLECTIVE PAVEMENT MARKERS AND OTHER  
PAVEMENT MARKINGS.

1 Rev. 05/24/2011 BN

FILE NAME = DIS1111-shr-plendgn	USER NAME = nethanba	DESIGNED -	REVISED -	<b>STATE OF ILLINOIS DEPARTMENT OF TRANSPORTATION</b>	<b>I-90 (KENNEDY EXPRESSWAY) PROPOSED PLANS &amp; PAVEMENT MARKING PLANS</b>	F.A.I. RTE.	SECTION	COUNTY	TOTAL SHEETS	SHEET NO.		
	PLOT SCALE = 100,000' / IN.	DRAWN -	REVISED -			90	2011-029-1	COOK	20	4		
	PLOT DATE = 5/31/2011	CHECKED -	REVISED -			CONTRACT NO. 60P32						
		DATE -	REVISED -			ILLINOIS FED. AID PROJECT						
					SCALE: 1" = 50'	SHEET NO. OF SHEETS		STA. 3339+33 TO STA. 3349+00				



**NOTE:**  
 SEE DISTRICT DETAIL "MULTI-LANE FREEWAY  
 PAVEMENT MARKING DETAILS" FOR RAISED  
 REFLECTIVE PAVEMENT MARKERS AND OTHER  
 PAVEMENT MARKINGS.



1 Rev. 05/24/2011 BN

FILE NAME =	D:\B1111\shv-plen.dgn
-------------	-----------------------

USER NAME =	nathanbo	DESIGNED -	REVISED -
		DRAWN -	REVISED -
PLOT SCALE =	100.0000' / IN.	CHECKED -	REVISED -
PLOT DATE =	5/31/2011	DATE -	REVISED -

**STATE OF ILLINOIS  
 DEPARTMENT OF TRANSPORTATION**

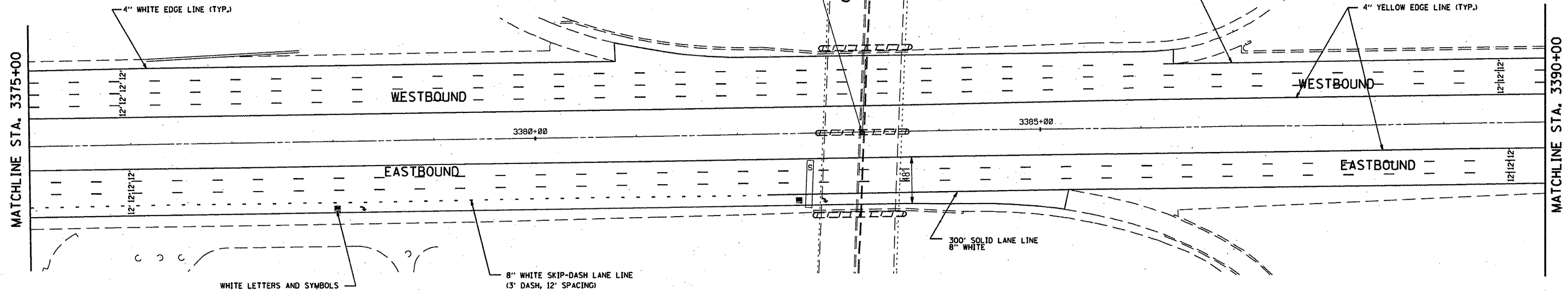
<b>1-90 (KENNEDY EXPRESSWAY)    PROPOSED PLANS &amp; PAVEMENT MARKING PLANS</b>			
SCALE: 1" = 50'	SHEET NO. OF SHEETS	STA. 3349+00 TO STA. 3375+00	

F.A.I. RTE.	SECTION	COUNTY	TOTAL SHEETS	SHEET NO.
90	2011-029-1	COOK	20	5
CONTRACT NO. 60P32				
ILLINOIS FED. AID PROJECT				



KENNEDY EXPY. @ STA. 3383+24.29  
 CUMBERLAND AVE. @ STA. 117+77.80 (OVERHEAD)

CUMBERLAND AVE.



WHITE LETTERS AND SYMBOLS

8" WHITE SKIP-DASH LANE LINE  
 (3' DASH, 12' SPACING)

300' SOLID LANE LINE  
 8" WHITE

**NOTE:**

SEE DISTRICT DETAIL "MULTI-LANE FREEWAY PAVEMENT MARKING DETAILS" FOR RAISED REFLECTIVE PAVEMENT MARKERS AND OTHER PAVEMENT MARKINGS.

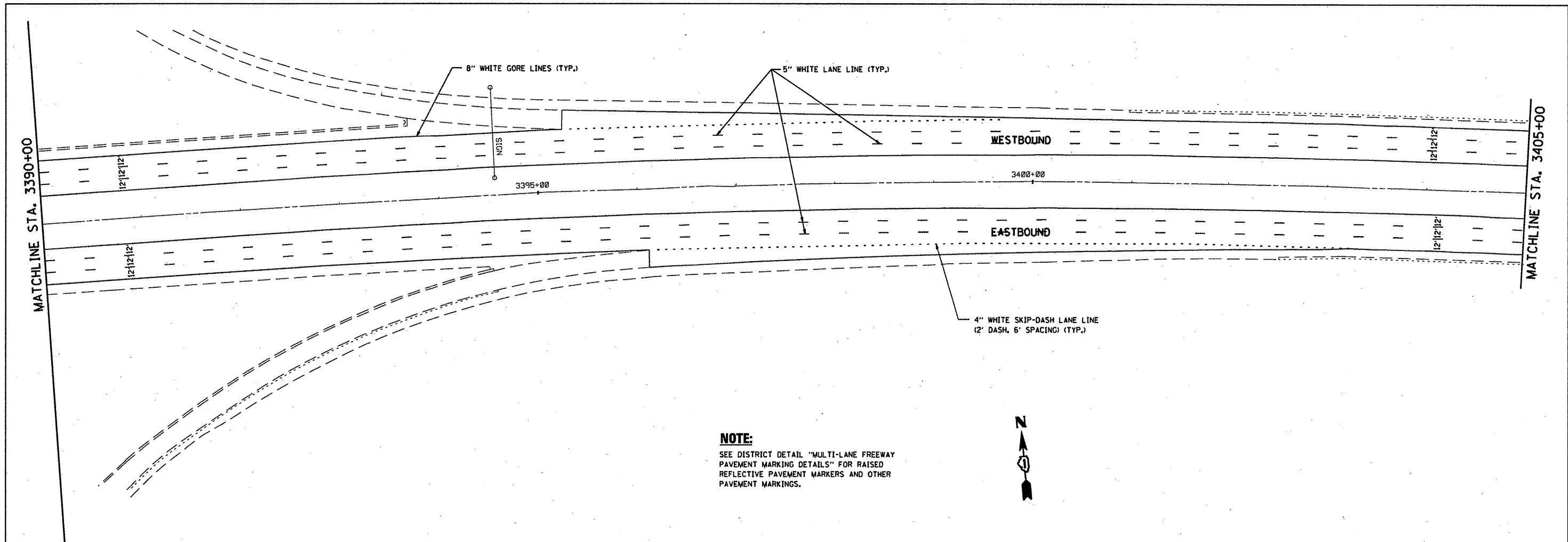
1 Rev. 05/24/2011 BN

FILE NAME = D151111-ahf-plan.dgn	USER NAME = nathanba	DESIGNED -	REVISED -
		DRAWN -	REVISED -
	PLOT SCALE = 100.0000' / IN.	CHECKED -	REVISED -
	PLOT DATE = 5/31/2011	DATE -	REVISED -

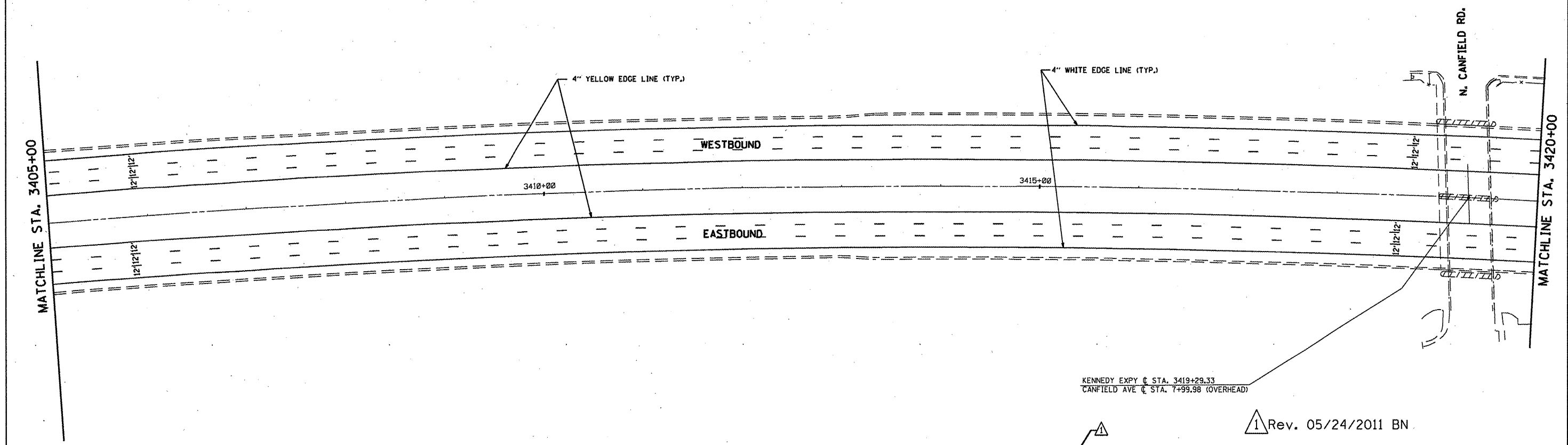
STATE OF ILLINOIS  
 DEPARTMENT OF TRANSPORTATION

<b>(I-90) (KENNEDY EXPRESSWAY)</b>			
<b>PROPOSED PLANS &amp; PAVEMENT MARKING PLANS</b>			
SCALE: 1" = 50'	SHEET NO. OF	SHEETS	STA. 3375+00 TO STA. 3390+00

F.A.I. RTE. 90	SECTION 2011-029-1	COUNTY COOK	TOTAL SHEETS 20	SHEET NO. 6
CONTRACT NO. 60P32				
ILLINOIS FED. AID PROJECT				



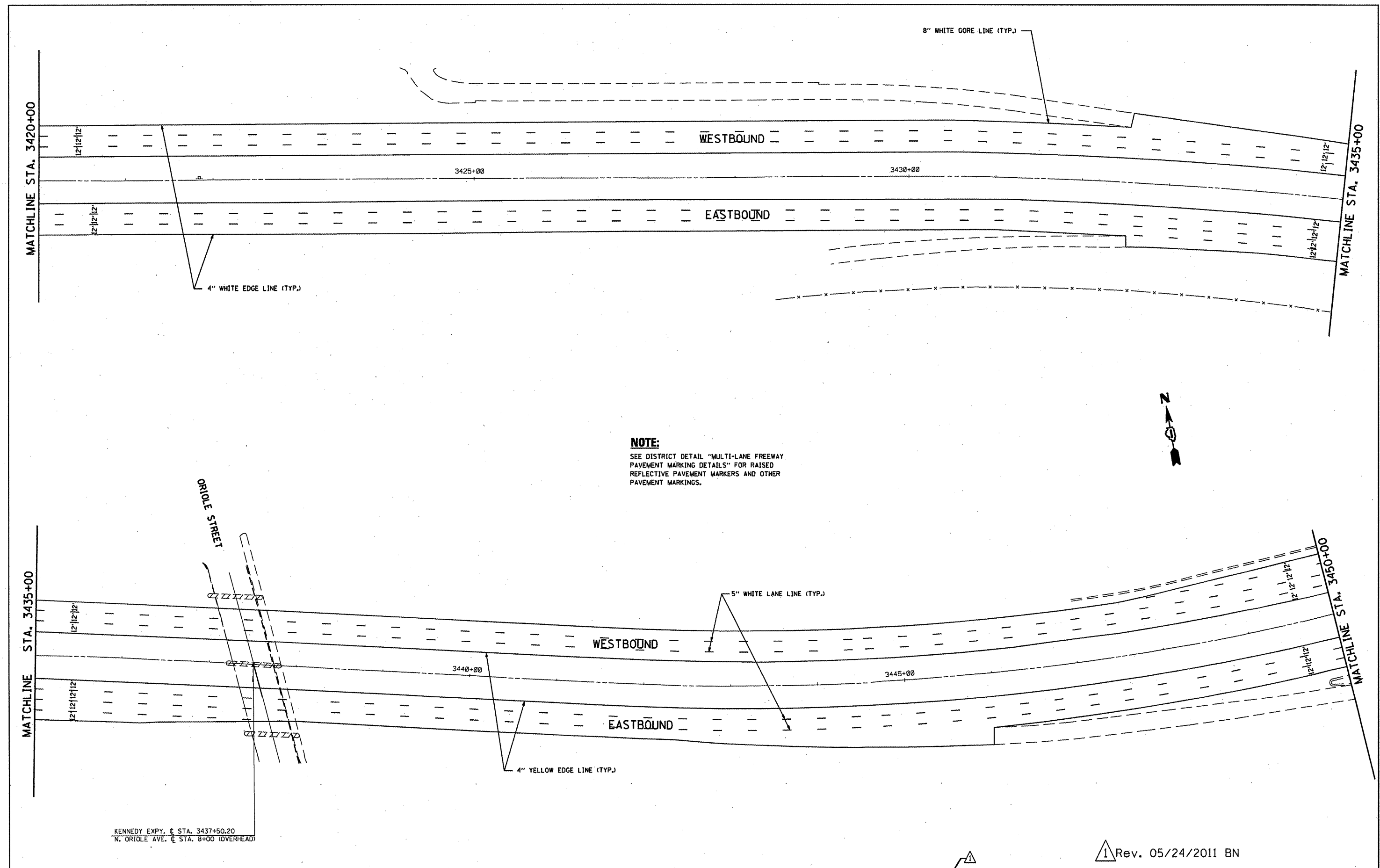
**NOTE:**  
SEE DISTRICT DETAIL "MULTI-LANE FREEWAY PAVEMENT MARKING DETAILS" FOR RAISED REFLECTIVE PAVEMENT MARKERS AND OTHER PAVEMENT MARKINGS.



KENNEDY EXPY @ STA. 3419+29.33  
CANFIELD AVE @ STA. 7+99.98 (OVERHEAD)

1 Rev. 05/24/2011 BN

FILE NAME : 015111-ahp-plan.dgn	USER NAME : nathanbo	DESIGNED -	REVISED -	<b>STATE OF ILLINOIS DEPARTMENT OF TRANSPORTATION</b>	<b>I-90 (KENNEDY EXPRESSWAY)</b>	F.A.I. RTE.:	SECTION	COUNTY	TOTAL SHEETS	SHEET NO.	
	PLOT SCALE = 100.0000' / 1" IN.	CHECKED -	REVISED -			90	2011-029-1	COOK	20	7	
PLOT DATE = 5/31/2011	DATE -	REVISED -	REVISED -		SCALE: 1" = 50'	SHEET NO. OF SHEETS	STA. 3390+00 TO STA. 3420+00	CONTRACT NO. 60P32			
(ILLINOIS) FED. AID PROJECT											



**NOTE:**  
 SEE DISTRICT DETAIL "MULTI-LANE FREEWAY  
 PAVEMENT MARKING DETAILS" FOR RAISED  
 REFLECTIVE PAVEMENT MARKERS AND OTHER  
 PAVEMENT MARKINGS.



KENNEDY EXPY. @ STA. 3437+50.20  
 N. ORIOLE AVE. @ STA. 8+00 (OVERHEAD)

1 Rev. 05/24/2011 BN

FILE NAME = D:\B1111-ahv-plendgn	USER NAME = nathanbo	DESIGNED -	REVISED -
		DRAWN -	REVISED -
	PLOT SCALE = 100,0000' / IN.	CHECKED -	REVISED -
	PLOT DATE = 5/31/2011	DATE -	REVISED -

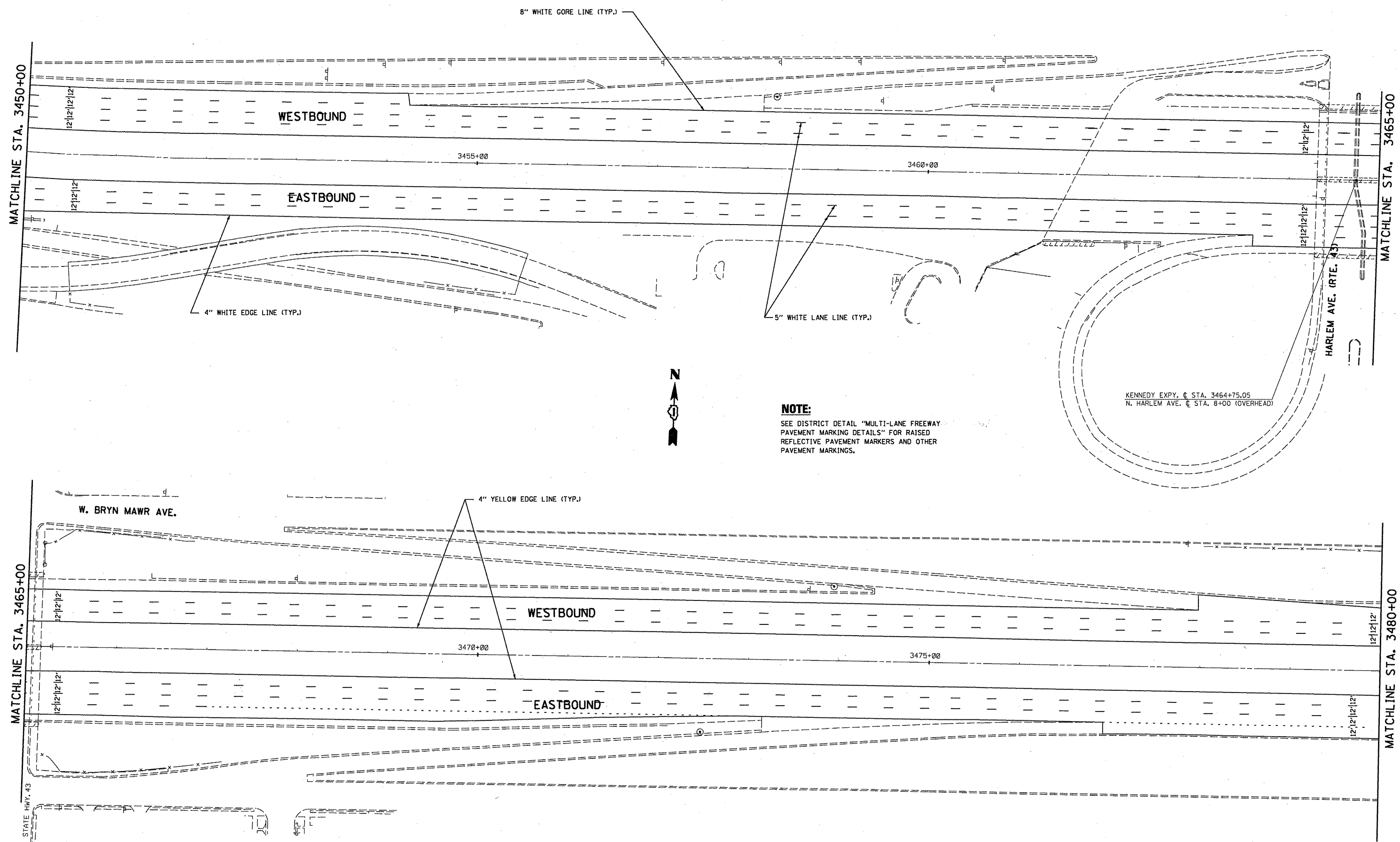
**STATE OF ILLINOIS  
 DEPARTMENT OF TRANSPORTATION**

**[I-90] (KENNEDY EXPRESSWAY)  
 PROPOSED PLANS & PAVEMENT MARKING PLANS**

SCALE: 1" = 50'    SHEET NO.    OF    SHEETS    STA. 3420+00    TO    STA. 3450+00

F.A.I. RTE. 90	SECTION 2011-029-1	COUNTY COOK	TOTAL SHEETS 20	SHEET NO. 8
CONTRACT NO. 60P32				ILLINOIS FED. AID PROJECT





**NOTE:**  
 SEE DISTRICT DETAIL "MULTI-LANE FREEWAY PAVEMENT MARKING DETAILS" FOR RAISED REFLECTIVE PAVEMENT MARKERS AND OTHER PAVEMENT MARKINGS.



FILE NAME =	USER NAME = nathanbc
D:\11111-sht-plan.dgn	

DESIGNED -	REVISOR -
DRAWN -	REVISIONS -
PLOT SCALE = 100.0000' / IN.	CHECKED -
PLOT DATE = 4/7/2011	DATE -

DESIGNED -	REVISOR -
DRAWN -	REVISIONS -
PLOT SCALE = 100.0000' / IN.	CHECKED -
PLOT DATE = 4/7/2011	DATE -

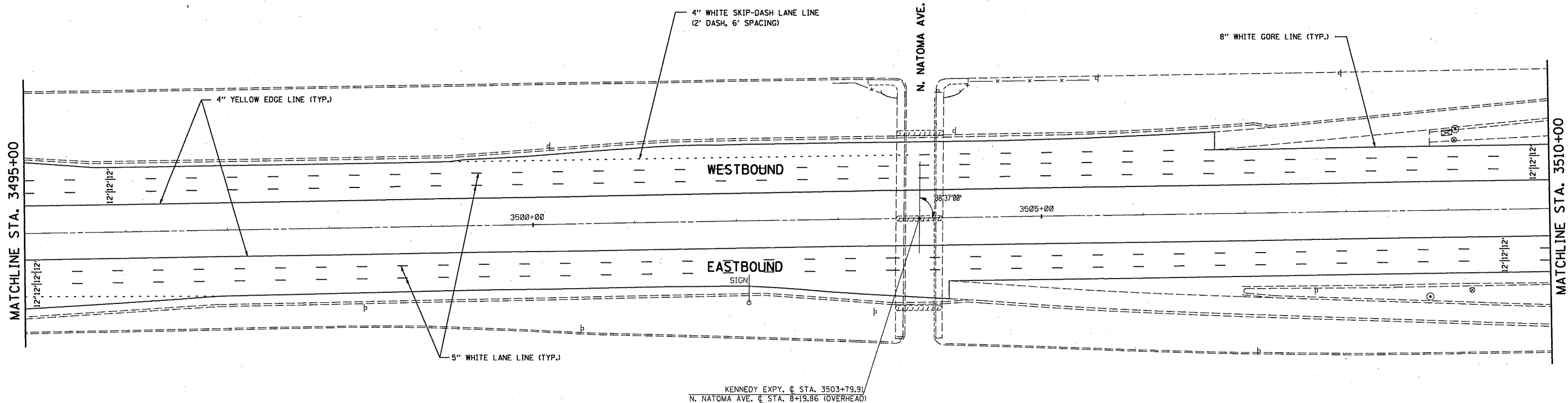
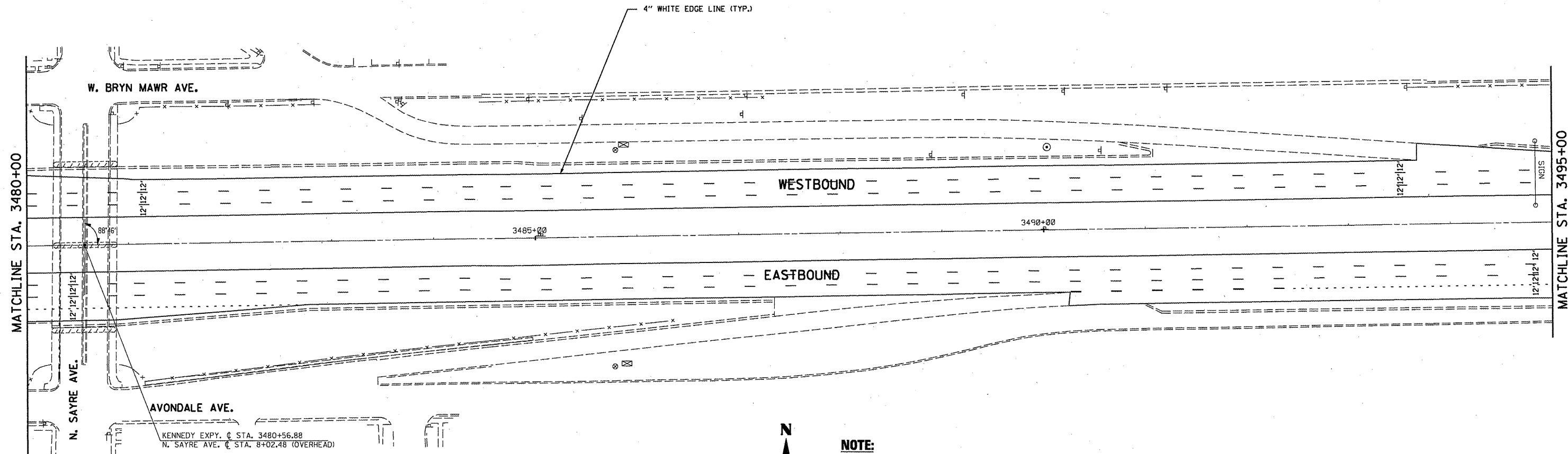
**STATE OF ILLINOIS  
 DEPARTMENT OF TRANSPORTATION**

**I 90 (KENNEDY EXPRESSWAY)  
 PROPOSED PLANS & PAVEMENT MARKING PLANS**

SCALE: 1" = 50'    SHEET NO.    OF    SHEETS    STA. 3450+00    TO STA. 3480+00

F.A.I. RTE.	SECTION	COUNTY	TOTAL SHEETS	SHEET NO.
90	2011-029-1	COOK	20	9
CONTRACT NO. 60P32				
ILLINOIS FED. AID PROJECT				

Rev. 6-2-11



**NOTE:**  
SEE DISTRICT DETAIL "MULTI-LANE FREEWAY PAVEMENT MARKING DETAILS" FOR RAISED REFLECTIVE PAVEMENT MARKERS AND OTHER PAVEMENT MARKINGS.

FILE NAME = D151111-sht-plan.dgn
-------------------------------------

USER NAME = nathanbc
PLOT SCALE = 100.0000' / IN.
PLOT DATE = 4/7/2011

DESIGNED -	REVISED -
DRAWN -	REVISED -
CHECKED -	REVISED -
DATE -	REVISED -

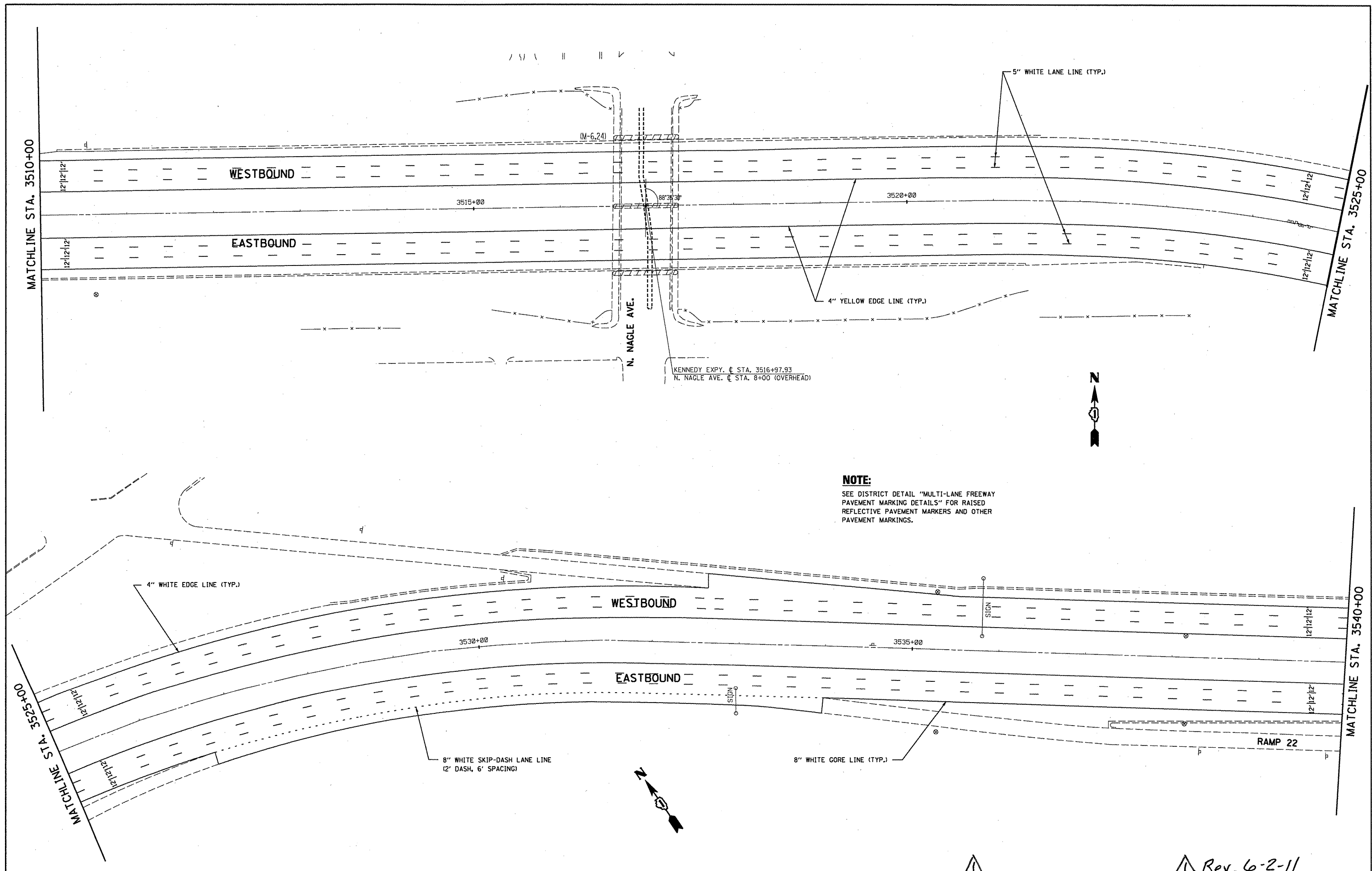

**STATE OF ILLINOIS  
DEPARTMENT OF TRANSPORTATION**

**I-90 (KENNEDY EXPRESSWAY)  
PROPOSED PLANS & PAVEMENT MARKING PLANS**

SCALE: 1" = 50'    SHEET NO. OF SHEETS    STA. 3480+00 TO STA. 3510+00

F.A.I. RTE. 90	SECTION 2011-029-1	COUNTY COOK	TOTAL SHEETS 20	SHEET NO. 10
CONTRACT NO. 60P32				
[ILLINOIS] FED. AID PROJECT				

Rev. 6-2-11



**NOTE:**  
 SEE DISTRICT DETAIL "MULTI-LANE FREEWAY PAVEMENT MARKING DETAILS" FOR RAISED REFLECTIVE PAVEMENT MARKERS AND OTHER PAVEMENT MARKINGS.

FILE NAME =  
 D151111-ght-plan.dgn

USER NAME = nathanbo  
 PLOT SCALE = 100.0000' / IN.  
 PLOT DATE = 4/7/2011

DESIGNED -	REVISED -
DRAWN -	REVISED -
CHECKED -	REVISED -
DATE -	REVISED -

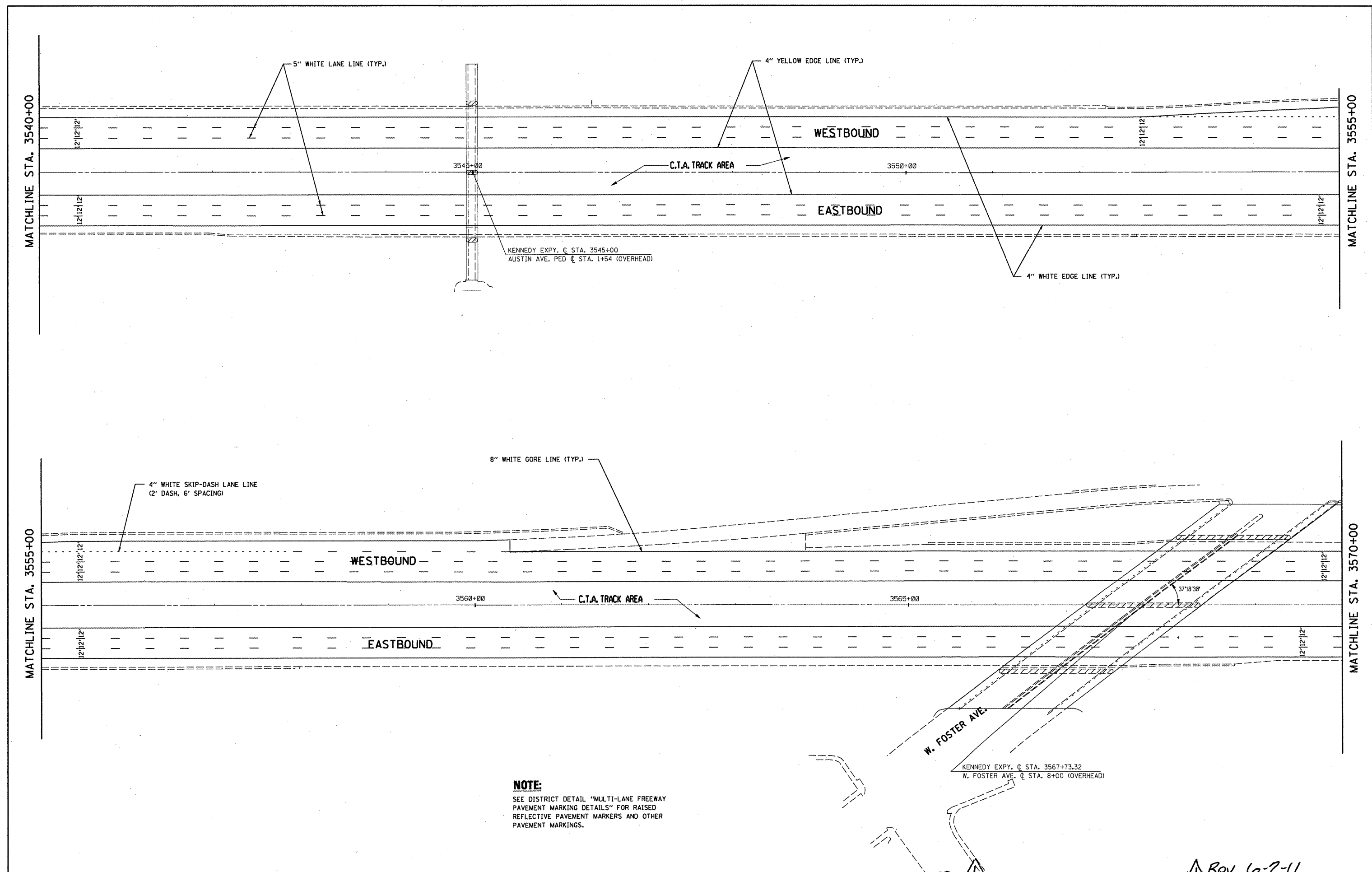
**STATE OF ILLINOIS  
 DEPARTMENT OF TRANSPORTATION**

**I-90 (KENNEDY EXPRESSWAY)  
 PROPOSED PLANS & PAVEMENT MARKING PLANS**

SCALE: 1" = 50'    SHEET NO. OF SHEETS    STA. 3510+00 TO STA. 3540+00

F.A.I. RTE. 90	SECTION 2011-029-1	COUNTY COOK	TOTAL SHEETS 20	SHEET NO. 11
CONTRACT NO. 60P32				
ILLINOIS FED. AID PROJECT				

Rev. 6-2-11



**NOTE:**  
SEE DISTRICT DETAIL "MULTI-LANE FREEWAY PAVEMENT MARKING DETAILS" FOR RAISED REFLECTIVE PAVEMENT MARKERS AND OTHER PAVEMENT MARKINGS.

FILE NAME = 0151111-sht-plan.dgn	USER NAME = nothanbc	DESIGNED -	REVISED -	<b>STATE OF ILLINOIS DEPARTMENT OF TRANSPORTATION</b>	<b>I-90 (KENNEDY EXPRESSWAY) PROPOSED PLANS &amp; PAVEMENT MARKING PLANS</b>	F.A.I. RTE. 90	SECTION 2011-029-1	COUNTY COOK	TOTAL SHEETS 20	SHEET NO. 12	
	PLOT SCALE = 100.0000' / IN.	CHECKED -	REVISED -			SCALE: 1" = 50'    SHEET NO. OF SHEETS    STA. 3540+00 TO STA. 3570+00					
	PLOT DATE = 4/7/2011	DATE -	REVISED -			CONTRACT NO. 60P32					
	ILLINOIS FED. AID PROJECT										

Rev. 6-2-11

MATCHLINE STA. 3570+00

MATCHLINE STA. 3586+00

MATCHLINE STA. 3600+00

MATCHLINE STA. 3586+00

KENNEDY EXPY. C. STA. 3579+64.02  
N. CENTRAL AVE. C. STA. 7+43.43 (OVERHEAD)

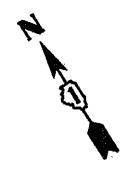
WESTBOUND

EASTBOUND

C.T.A. TRACK AREA

5" WHITE LANE LINE (TYP.)

4" WHITE SKIP-DASH LANE LINE  
(2" DASH, 6" SPACING)



8" WHITE GORE LINE (TYP.)

WESTBOUND

EASTBOUND

C.T.A. TRACK AREA

KENNEDY EXPY. C. STA. 3594+50.584

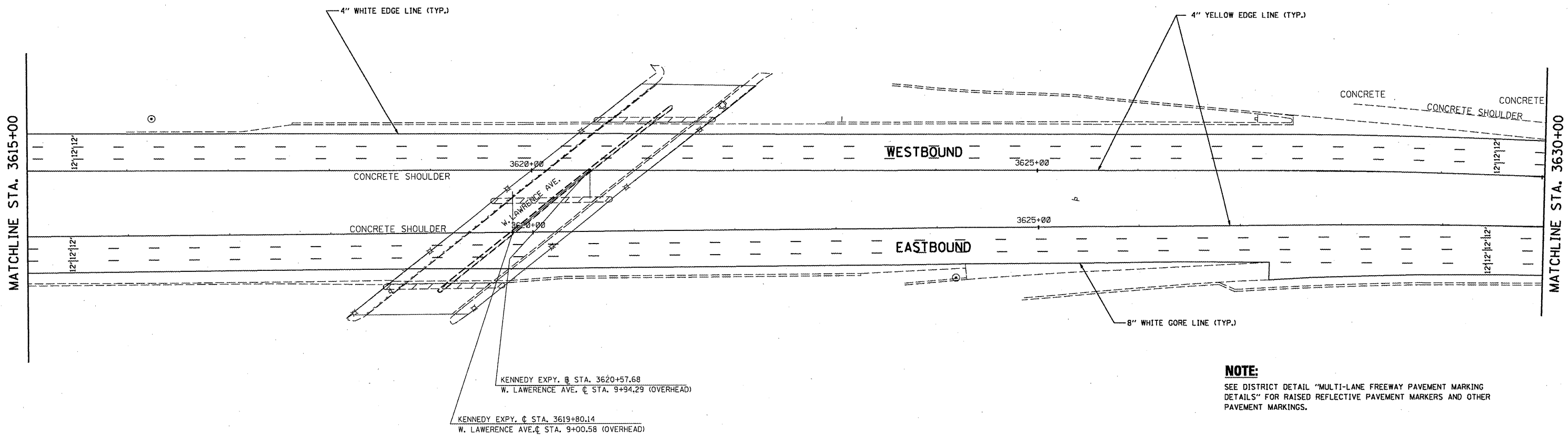
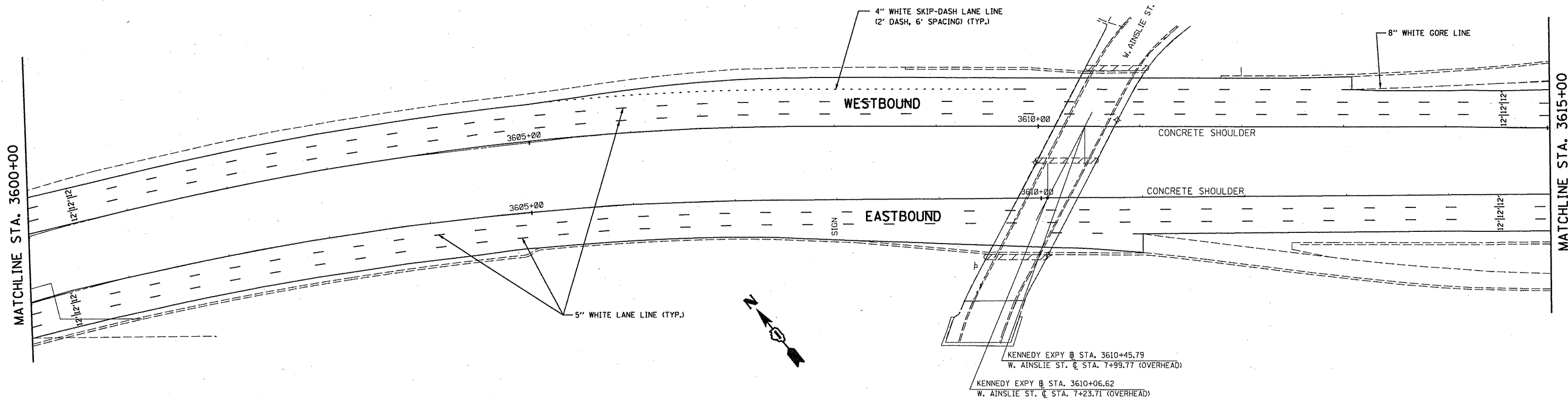
KENNEDY EXPY. C. STA. 3593+63.303

**NOTE:**

SEE DISTRICT DETAIL "MULTI-LANE FREEWAY  
PAVEMENT MARKING DETAILS" FOR RAISED  
REFLECTIVE PAVEMENT MARKERS AND OTHER  
PAVEMENT MARKINGS.

FILE NAME = D151111-sht-plan.dgn	USER NAME = nathanbo	DESIGNED -	REVISED -	<b>STATE OF ILLINOIS DEPARTMENT OF TRANSPORTATION</b>	<b>I-90 (KENNEDY EXPRESSWAY) PROPOSED PLANS &amp; PAVEMENT MARKING PLANS</b>	F.A.I. RTE. 90	SECTION 2011-029-I	COUNTY COOK	TOTAL SHEETS 20	SHEET NO. 13	
	PLOT SCALE = 100.0000' / IN.	CHECKED -	REVISED -			SCALE: 1" = 50'		SHEET NO. OF SHEETS		STA. 3570+00 TO STA. 3600+00	
	PLOT DATE = 4/7/2011	DATE -	REVISED -			ILLINOIS FED. AID PROJECT		CONTRACT NO. 60P32			

Rev. 6-2-11



**NOTE:**  
SEE DISTRICT DETAIL "MULTI-LANE FREEWAY PAVEMENT MARKING DETAILS" FOR RAISED REFLECTIVE PAVEMENT MARKERS AND OTHER PAVEMENT MARKINGS.

FILE NAME =	USER NAME = nathanbc
D:\11111-sht-plan.dgn	

DESIGNED -	REVISED -
DRAWN -	REVISED -
CHECKED -	REVISED -
DATE -	REVISED -

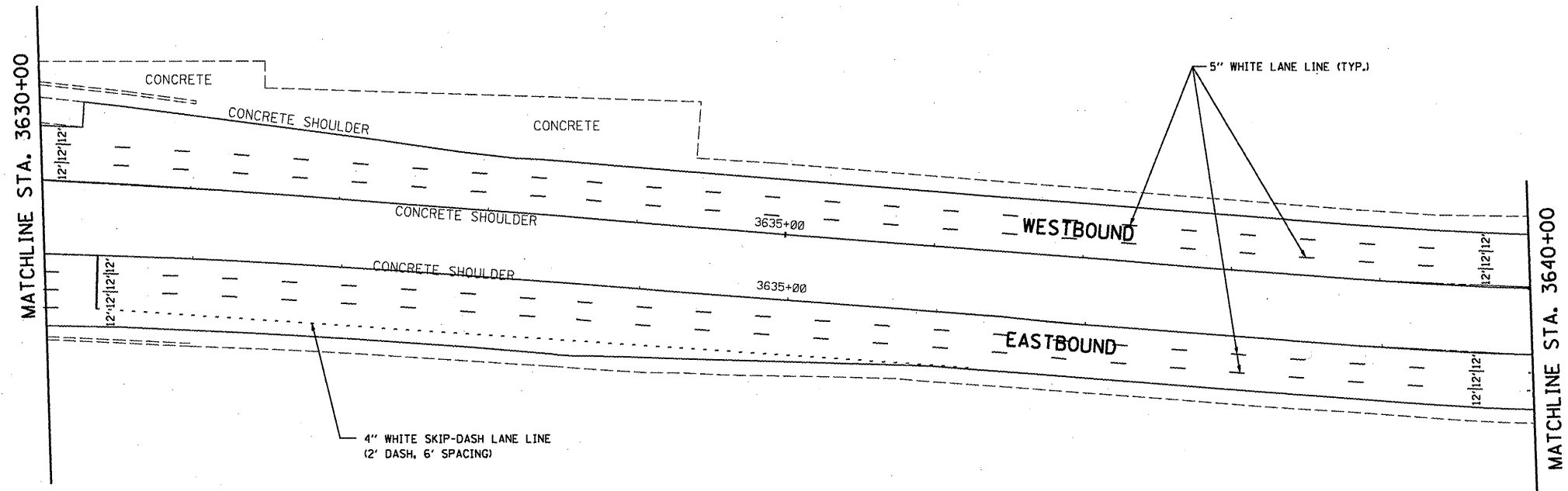
**STATE OF ILLINOIS  
DEPARTMENT OF TRANSPORTATION**

**I-90 (KENNEDY EXPRESSWAY)  
PROPOSED PLANS & PAVEMENT MARKING PLANS**

SCALE: 1" = 50'    SHEET NO.    OF    SHEETS    STA. 3600+00    TO    STA. 3630+00

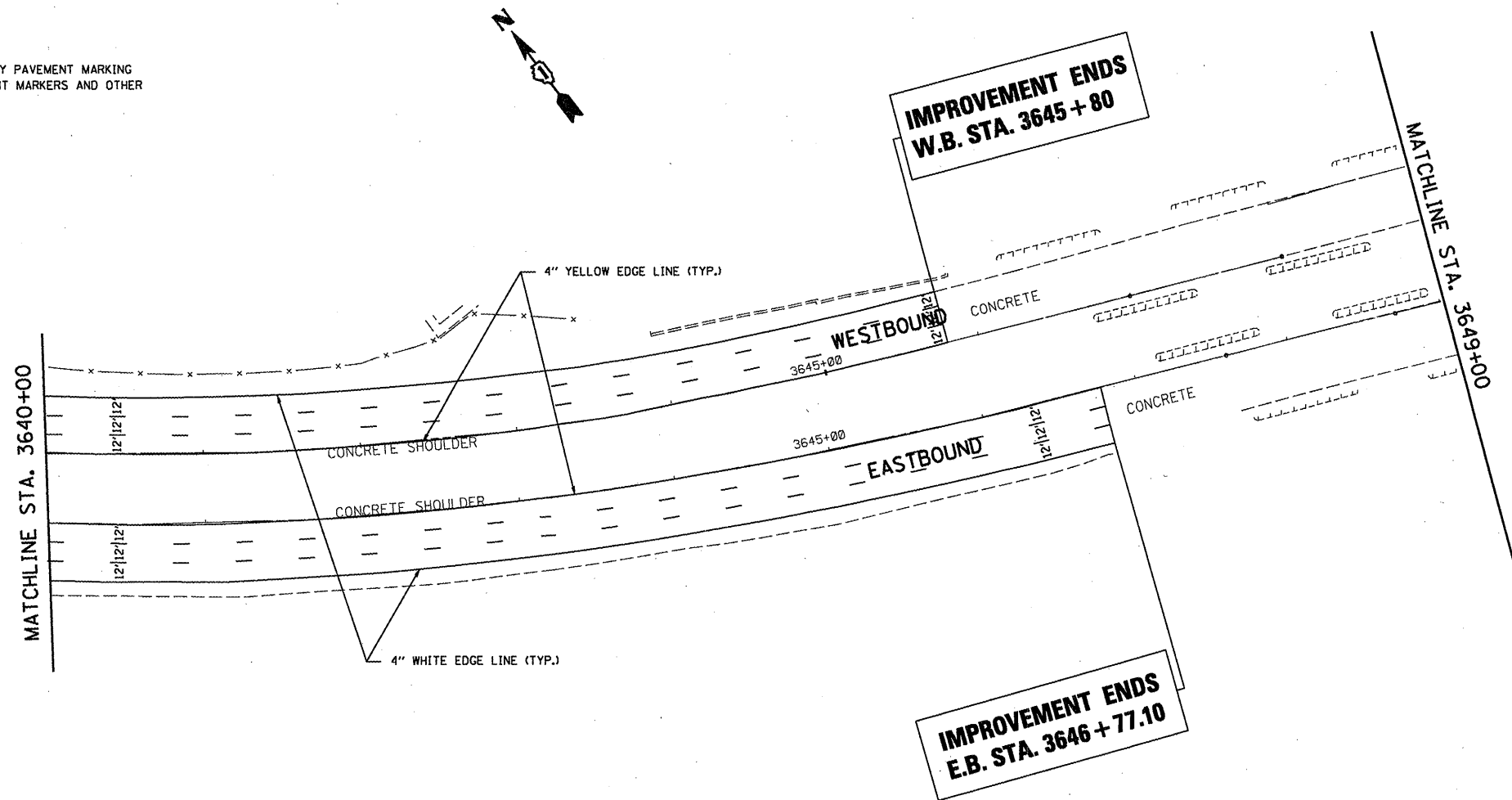
F.A.I. RTE.	SECTION	COUNTY	TOTAL SHEETS	SHEET NO.
90	2011-029-I	COOK	20	14
CONTRACT NO. 60P32			ILLINOIS FED. AID PROJECT	

Rev. 6-2-11



**NOTE:**

SEE DISTRICT DETAIL "MULTI-LANE FREEWAY PAVEMENT MARKING DETAILS" FOR RAISED REFLECTIVE PAVEMENT MARKERS AND OTHER PAVEMENT MARKINGS.



FILE NAME = D151111-sht-plan.dgn	USER NAME = nathanbc	DESIGNED -	REVISED -
		DRAWN -	REVISED -
		CHECKED -	REVISED -
		DATE -	REVISED -
PLOT SCALE = 100.0000' / IN.			
PLOT DATE = 4/7/2011			

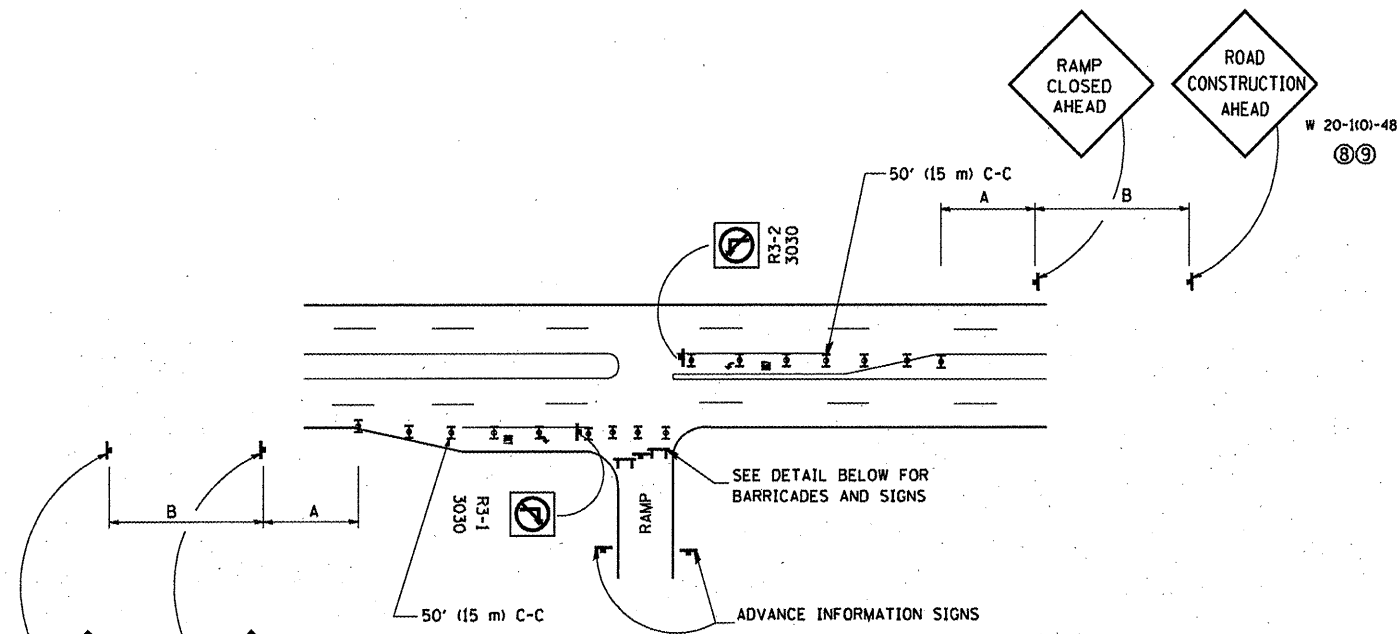
STATE OF ILLINOIS  
DEPARTMENT OF TRANSPORTATION

**I-90 KENNEDY EXPRESSWAY**  
PROPOSED PLANS & PAVEMENT MARKING PLANS

SCALE: 1" = 50' SHEET NO. OF SHEETS STA. 3630+00 TO STA. 3649+00

F.A.I. RTE.	SECTION	COUNTY	TOTAL SHEETS	SHEET NO.
90	2011-029-1	COOK	20	15
CONTRACT NO. 60P32			ILLINOIS FED. AID PROJECT	

Rev. 6-2-11

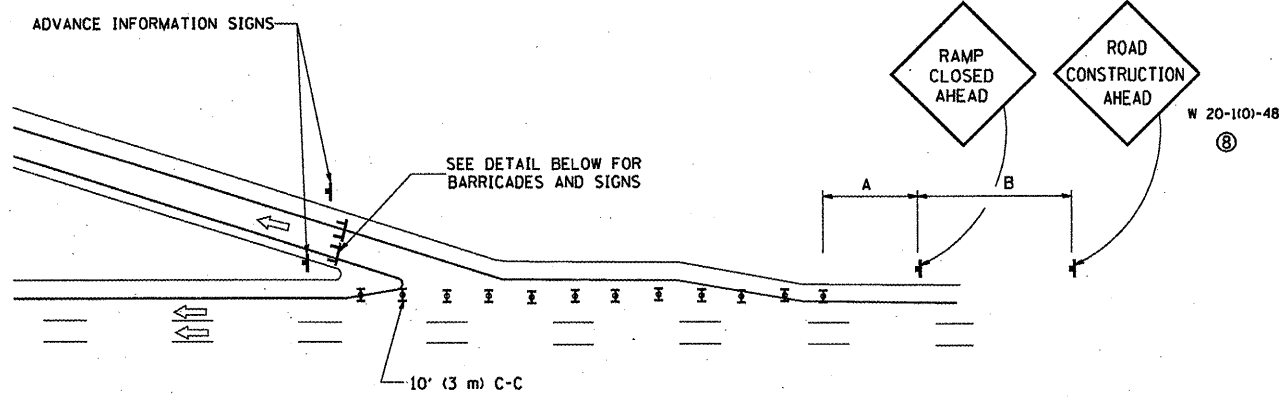
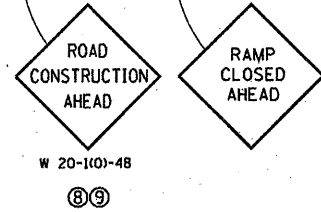


**ENTRANCE RAMP CLOSURE**

**SIGN SPACING TABLE**

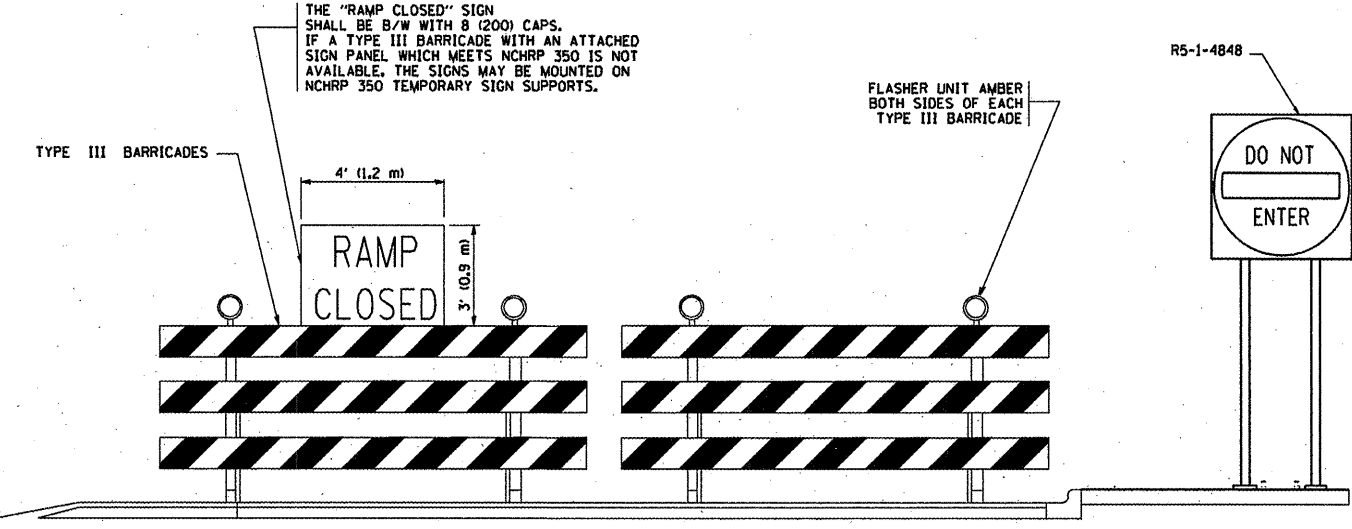
FACILITY	DISTANCE BETWEEN SIGNS	
	A	B
EXPRESSWAY >24 HOURS	1000' (300 m)	1500' (450 m)
EXPRESSWAY ≤24 HOURS	500' (150 m)	500' (150 m)
ARTERIAL ≥45 MPH	350' (100 m)	350' (100 m)
ARTERIAL <45 MPH	150' (45 m)	150' (45 m)

DISTANCES MAY BE SHORTENED DEPENDING UPON THE PROXIMITY OF ADJACENT RAMPS OR INTERSECTIONS.

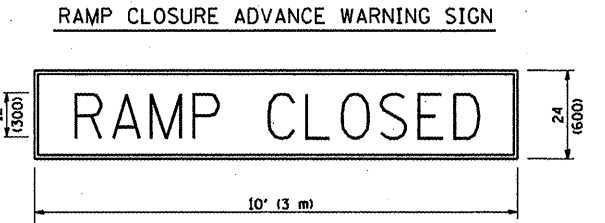


**EXIT RAMP CLOSURE**

- SYMBOLS**
- ▬ TYPE II BARRICADE, DRUM OR VERTICAL BARRICADE WITH STEADY BURN MONO-DIRECTIONAL LIGHT
  - ⌈ TYPE III BARRICADE WITH FLASHING LIGHT

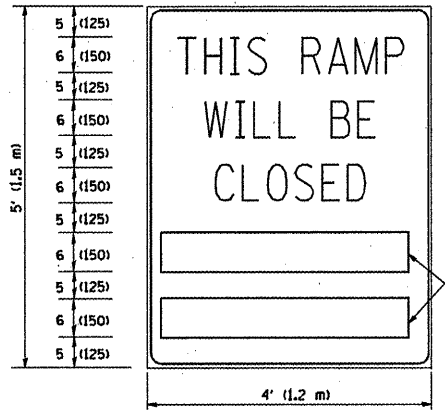


**DETAIL FOR REQUIRED BARRICADES & SIGNS**



BLACK LEGEND ON ORANGE REFLECTORIZED BACKGROUND  
1 (25) BORDER  
THESE SIGNS ARE REQUIRED ON ALL THE EXIT GUIDE SIGNS FOR THE CLOSED EXIT RAMPS.

**RAMP CLOSURE ADVANCE INFORMATION SIGN**



BLACK LEGEND ON WHITE REFLECTORIZED BACKGROUND  
1/2 (12) BORDER  
THESE BLANK AREAS SHALL BE FILLED WITH THE DATES AND THE TIME THAT THE RAMP WILL BE CLOSED.

THESE SIGNS ARE REQUIRED ON BOTH SIDES OF THE RAMP, MINIMUM OF 1 WEEK IN ADVANCE OF THE CLOSURE.

**GENERAL NOTES:**

- ① CONES MAY BE SUBSTITUTED FOR DRUMS OR TYPE II BARRICADES DURING DAY OPERATIONS. CONES SHALL BE A MINIMUM OF 28 (700) HIGH.
- ② STEADY BURN LIGHTS WILL NOT BE REQUIRED FOR DAY OPERATIONS.
- ③ A FLAGGER SHALL BE POSITIONED AT EACH CLOSED RAMP THAT IS OPEN TO CONSTRUCTION VEHICLES.
- ④ ALL ROUTE MARKERS AND TRAILBLAZER ASSEMBLIES WHICH DIRECT MOTORISTS TO A CLOSED ENTRANCE RAMP SHALL BE COVERED.
- ⑤ THE SIGNING AND BARRICADING WHICH IS REQUIRED BY THIS DETAIL SHALL BE INCLUDED IN THE COST OF TRAFFIC CONTROL AND PROTECTION (EXPRESSWAYS).
- ⑥ AUTHORIZATION FROM THE DISTRICT'S BUREAU OF TRAFFIC IS REQUIRED FOR ALL RAMP CLOSURES.
- ⑦ THE RAMP CLOSURE ADVANCE INFORMATION SIGNS SHALL BE ERECTED IF THE CLOSURE TIME EXCEEDS TWENTY-FOUR (24) HOURS. ADDITIONAL ADVANCE WARNING SIGNS ON EXIT GUIDE SIGNING WILL BE REQUIRED FOR EXIT RAMP CLOSURES THAT EXCEED TWENTY FOUR (24) HOURS IN LENGTH.
- ⑧ ROAD CONSTRUCTION AHEAD SIGNS MAY BE OMITTED WHEN THIS DETAIL IS USED IN CONJUNCTION WITH OTHER TRAFFIC CONTROL THAT ALREADY INCLUDES A ROAD CONSTRUCTION AHEAD SIGN.
- ⑨ ARTERIAL ROAD CONSTRUCTION AHEAD SIGNS MAY BE OMITTED ON CLOSURES LESS THAN 24 HOURS IN DURATION.

Added Sheet, 05/24/2011 BN

ALL DIMENSIONS ARE IN INCHES (MILLIMETERS) UNLESS OTHERWISE SHOWN.

FILE NAME =	USER NAME = nathanbo	DESIGNED - DWS	REVISED - DWS/JAF 12-02
ca\pwwork\pwwdot\nathanbo\d0264061\01s6td.dgn		DRAWN -	REVISED - JAF 02-06
PLOT SCALE = 100.0000' / IN.		CHECKED -	REVISED - SPB 01-07
PLOT DATE = 5/27/2011		DATE - 02-83	REVISED - SPB 12-09

**STATE OF ILLINOIS  
DEPARTMENT OF TRANSPORTATION**

<b>FREEWAY ENTRANCE AND EXIT RAMP CLOSURE DETAILS</b>			
SCALE: NONE	SHEET NO. 1 OF 1 SHEETS	STA. TO STA.	

F.A.I. RTE. 90	SECTION 2011-029-11	COUNTY COOK	TOTAL SHEETS 20	SHEET NO. 20A
TC-08		CONTRACT NO. 60P32		
FED. ROAD DIST. NO. 1 ILLINOIS FED. AID PROJECT				