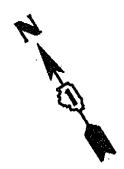
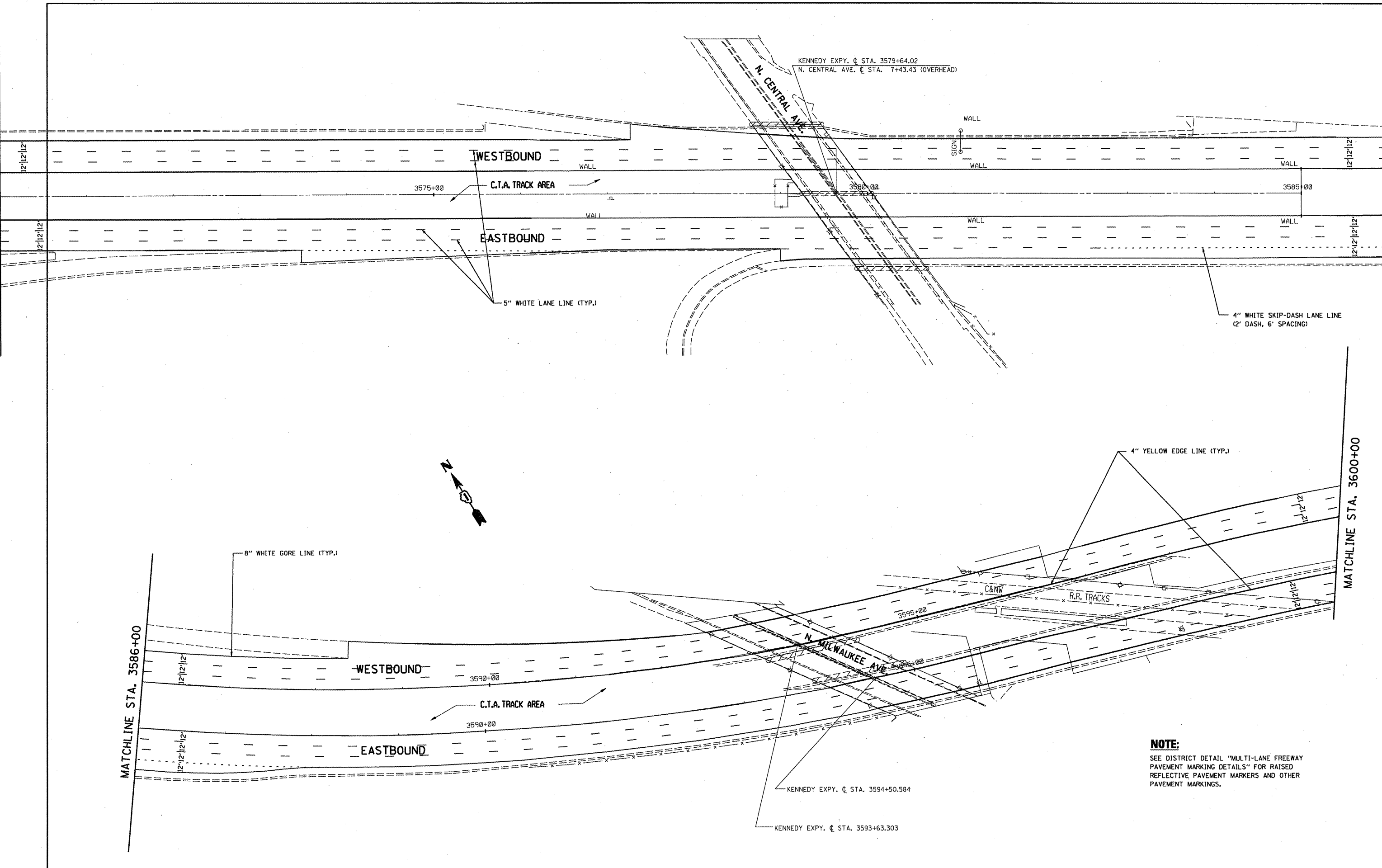


MATCHLINE STA. 3570+00

MATCHLINE STA. 3586+00

MATCHLINE STA. 3600+00

MATCHLINE STA. 3586+00



NOTE:
SEE DISTRICT DETAIL "MULTI-LANE FREEWAY PAVEMENT MARKING DETAILS" FOR RAISED REFLECTIVE PAVEMENT MARKERS AND OTHER PAVEMENT MARKINGS.

FILE NAME = D:\11111-sht-plan.dgn	USER NAME = nathanbc	DESIGNED -	REVISED -
		DRAWN -	REVISED -
		CHECKED -	REVISED -
		DATE -	REVISED -
	PLOT SCALE = 100.0000' / IN.		
	PLOT DATE = 4/7/2011		

**STATE OF ILLINOIS
DEPARTMENT OF TRANSPORTATION**

IL. ROUTE 90 (KENNEDY EXPRESSWAY) PROPOSED PLANS & PAVEMENT MARKING PLANS			
SCALE: 1" = 50'	SHEET NO. OF	SHEETS	STA. 3570+00 TO STA. 3600+00

F.A.I. RTE.	SECTION	COUNTY	TOTAL SHEETS	SHEET NO.
90	2011-029-1	COOK	20	13
CONTRACT NO. 60P32				
[ILLINOIS] FED. AID PROJECT				