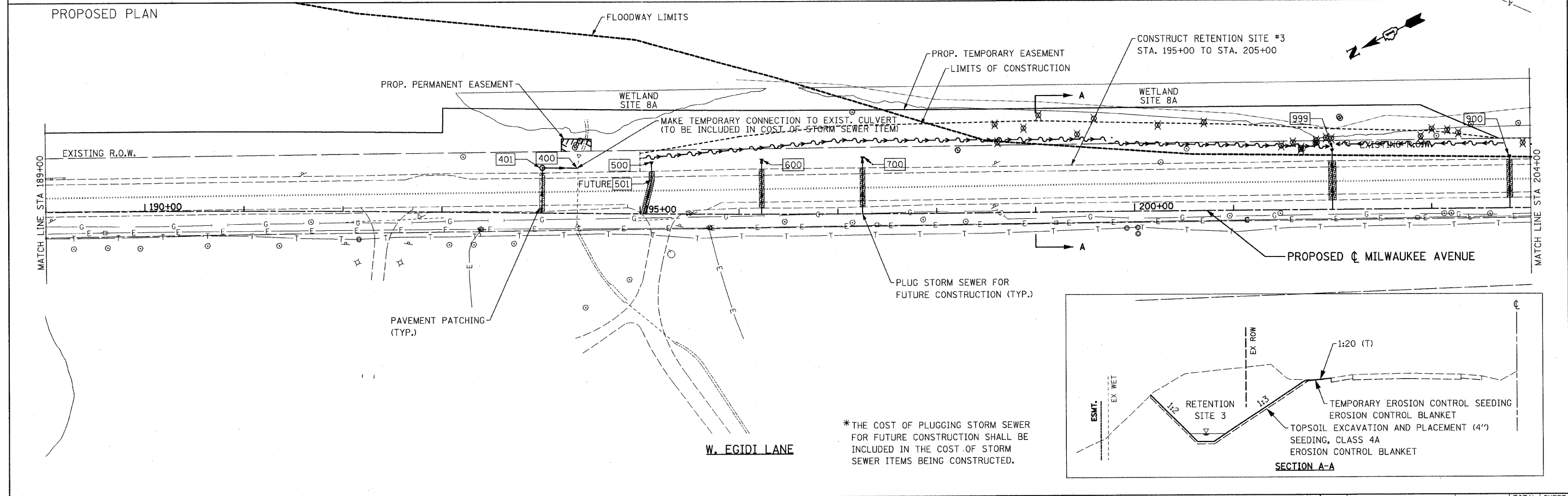


EXISTING PLAN
PROPOSED PLAN



- LEGEND**
- X REMOVE AND RELOCATE SIGN PANEL ASSEMBLY AND SIGN PANEL(S) (SEE GENERAL NOTES)
 - ⊗ DRIVEWAY PAVEMENT REMOVAL
 - ⊗ TREE REMOVAL
 - ⊗ STUMP REMOVAL
 - SEE TREE REMOVAL SCHEDULE
 - ⊗ PAVED SHOULDER REMOVAL

FILE NAME =	USER NAME = IDOT	DESIGNED - EJM	REVISED -	STATE OF ILLINOIS DEPARTMENT OF TRANSPORTATION	ROADWAY PLAN IL RTE 21 (MILWAUKEE AVE)			F.A.P. RTE. 330	SECTION 128-1-3	COUNTY LAKE	TOTAL SHEETS 128	SHEET NO. 20
u:\182985_1121_04\cadd\sheet\shht-plan02.dgn	PLOT SCALE = 50.0000' / IN.	DRAWN - BK	REVISED -		SCALE: 1" = 50'	SHEET NO. OF SHEETS	STA. 189+00.00 TO STA. 204+00.00	CONTRACT NO. 60P33				
	PLOT DATE = 5/9/2011	CHECKED - GFL	REVISED -		ILLINOIS FED. AID PROJECT							
		DATE - 3/18/2011	REVISED -									