

PART OF THE NE1/4 OF SECTION 8 AND THE NW1/4 OF SECTION 9, TWP. 44 N., R. 11 E. OF THE 3RD. P.M., IN LAKE COUNTY, ILLINOIS.

PARCEL NUMBER	OWNER	TOTAL HOLDINGS ACRES	PART TAKEN ACRES	AREA IN EXISTING R.O.W. ACRES	REMAINDER AREA ACRES	EASEMENT ACRES	EASEMENT SQUARE FEET	EASEMENT PURPOSE	PERMANENT INDEX NUMBER	PROPERTY ACQUIRED BY
IDK0020	LAKE COUNTY FOREST PRESERVE	*802.4+	0.000	N/A	*802.4+/-	**	***	PROP. ROW CONST.	11-04-300-010 11-04-300-013 11-04-300-003 11-09-100-001 thru 004 11-04-100-005	
IDK0026	FRED STEVEN KAECHLE & TONI L. KAECHLE	0.952	0.054	N/A	0.898	N/A	N/A	N/A	11-08-201-051	
IDK0027	JOSE LUIS AGUILAR & CRESCENCIA G. AGUILAR	0.943	0.021	N/A	0.922	N/A	N/A	N/A	11-08-201-050	
IDK0028	ROBERT TERENCE MANWARING & SHEILA MABEL MANWARING	1.008	N/A	N/A	1.008	0.009	408	CONST.	11-08-201-061	

\* AREAS OF CONTIGUOUS PROPERTY CALCULATED USING EXISTING PLATS & RECORDS.

COORDINATE TABLE

IL ROUTE 21	STATION	OFFSET	PTH	NORTH	EAST	PLAN STATION
	303+97.41	76.70' LT.	384	2056967.562	1084212.510	243+74.96
	299+94.26	73.00' LT.	4007	2056553.985	1084156.160	247+78.13
	298+02.65	64.18' LT.	4012	2056355.970	1084165.530	249+66.74
	300+17.81	0.00' RT.	5041	2056574.246	1084230.271	247+54.57
	296+91.92	60.00' LT.	5097	2056242.521	1084178.539	250+80.48
	295+93.90	60.00' LT.	5098	2056142.448	1084191.540	251+78.50
	297+84.15	60.00' LT.	8383	2056337.161	1084170.747	249+88.25
	301+72.38	45.00' RT.	8442	2056272.143	1084289.447	246+00.00
	298+27.40	45.00' RT.	8443	2056385.627	1084273.502	243+44.99
	303+85.40	41.79' RT.	8448	2056297.514	1084324.686	243+86.97
	296+32.40	44.32' RT.	8450	2056195.656	1084289.228	251+40.00
	298+27.40	103.87' RT.	9220	2056387.861	1084332.330	249+44.99
	297+85.86	103.46' RT.	9221	2056348.477	1084333.820	249+86.54
	297+85.86	55.00' RT.	9222	2056345.644	1084285.443	249+86.54
	295+72.41	55.00' RT.	9223	2056139.380	1084308.491	252+00.00
	295+72.41	45.21' RT.	9224	2056137.781	1084298.834	252+00.00
	297+72.40	55.00' RT.	9310	2056332.575	1084286.252	250+00.00
	297+72.40	62.00' RT.	9311	2056333.031	1084293.237	250+00.00
	298+27.40	62.00' RT.	9313	2056386.272	1084290.490	244+45.00
	297+85.86	62.00' RT.	9343	2056346.053	1084292.431	249+86.54
	304+25.98	41.79' RT.	9352	2056966.474	1084334.452	243+46.38
	298+27.40	42.11' RT.	9359	2056385.517	1084270.610	249+44.99
	297+72.40	42.62' RT.	9360	2056331.769	1084273.899	250+00.00

BROOKHILL ROAD FROM PLAT OF HIGHWAYS CENTERLINE

STATION	PTH	NORTH	EAST
509+30.13	33.49' RT.	4007	2056553.985
507+00.00	0.00' RT.	5034	2056605.436
507+62.87	0.00' RT.	5035	2056605.450
508+38.72	0.00' RT.	5037	2056600.453
508+86.10	0.00' RT.	5038	2056594.209
509+15.89	0.00' RT.	5040	2056589.517
509+99.28	0.00' RT.	5041	2056574.246
507+35.48	28.83' RT.	8389	2056576.610
507+60.48	28.75' RT.	8390	2056576.699
507+60.48	45.02' RT.	8391	2056560.429
507+35.48	45.02' RT.	8392	2056560.424

NOTE: PLAN CENTERLINE GEOMETRY IS NOT CONSISTENT WITH PLAT OF HIGHWAYS CENTERLINE GEOMETRY

BROOKHILL ROAD FROM PLAN CENTERLINE

STATION	PTH	NORTH	EAST
509+29.48	29.33' RT.	4007	2056553.985
507+01.37	5.52' LT.	5034	2056605.437
507+64.24	5.05' LT.	5035	2056605.450
508+39.47	4.50' LT.	5037	2056600.453
508+86.74	5.03' LT.	5038	2056594.209
509+16.53	4.68' LT.	5040	2056589.517
509+99.86	1.51' LT.	5041	2056574.246
507+36.64	23.58' RT.	8389	2056576.610
507+61.64	23.68' RT.	8390	2056576.699
507+61.52	39.95' RT.	8391	2056560.429
507+36.51	39.76' RT.	8392	2056560.424

PROP. CURVEBROOK2  
PI STA. =509+01.00  
Δ = 2° 58' 42" (RT)  
D = 9° 59' 54"  
R = 573.05'  
T = 14.90'  
L = 29.79'  
E = 0.19'  
e = -----  
T.R. = -----  
S.E. RUN = -----  
P.C. STA = 508+86.10  
P.T. STA = 509+15.89

PROP. CURVEBROOK1  
PI STA. =508+00.85  
Δ = 7° 35' 10" (RT)  
D = 10° 00' 02"  
R = 572.93'  
T = 37.98'  
L = 75.86'  
E = 1.26'  
e = -----  
T.R. = -----  
S.E. RUN = -----  
P.C. STA = 507+62.87  
P.T. STA = 508+38.72

Owners Resubdivision Unit No. 2

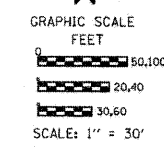
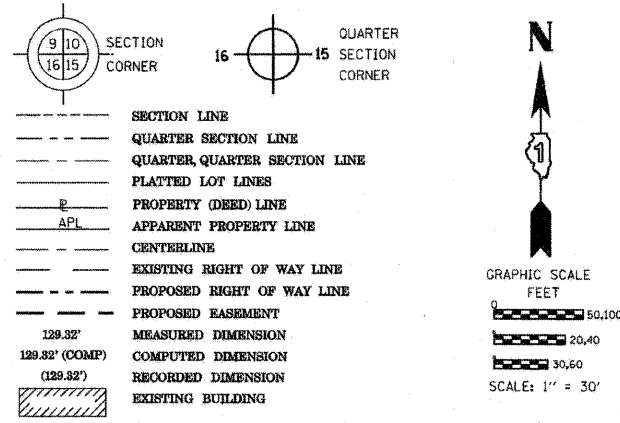
Rec'd Oct. 21, 1941 as doc. no. 503652

CURVE NO.	RADIUS	ARC BEARING	CHORD BEARING	CHORD LENGTH
1	1869.04'	546.63° S 05'41'52" W	544.69°	544.69'
2	1960.11'	40.27° N 02'45'48" W	40.27°	40.27'
3	1960.11'	53.31° S 02'57'14" E	53.31°	53.31'
4	1869.04'	53.85° N 03'30'06" W	53.85°	53.85'

NOTES:  
1. COORDINATES SHOWN ARE ILLINOIS STATE PLANE EAST ZONE, NAD 83 (2007), BASED ON NGS STATION MOUNT BM34 AND ITS PUBLISHED COORDINATES OF NORTH 2039591.13, EAST 1080478.83.

SEE CONTINUATION ON SHEET 14

LEGEND



Bearings are referenced to the Illinois Coordinate System, NAD83, East Zone, as provided by the Illinois Department of Transportation.

STATE OF ILLINOIS )  
COUNTY OF )  
THIS IS TO CERTIFY THAT I, RONALD F. HODGEN, AN ILLINOIS PROFESSIONAL LAND SURVEYOR, (WE, RUETTIGER, TONELLI & ASSOCIATES, AN ILLINOIS PROFESSIONAL DESIGN FIRM LAND SURVEYING CORPORATION, NUMBER 89,) HAVE SURVEYED THE PLAT OF HIGHWAYS SHOWN HEREON IN SECTION 9, TOWNSHIP 44 NORTH, RANGE 11 EAST OF THE THIRD PRINCIPAL MERIDIAN, LAKE COUNTY, THAT THE SURVEY IS TRUE AND COMPLETE AS SHOWN TO THE BEST OF MY KNOWLEDGE AND BELIEF, THAT THE PLAT CORRECTLY REPRESENTS SAID SURVEY, THAT ALL MONUMENTS FOUND AND ESTABLISHED ARE OF PERMANENT QUALITY AND OCCUPY THE POSITIONS SHOWN THEREON AND THAT THE MONUMENTS ARE SUFFICIENT TO ENABLE THE SURVEY TO BE RETRACED, MADE FOR THE DEPARTMENT OF TRANSPORTATION, STATE OF ILLINOIS.  
DATED AT \_\_\_\_\_, ILLINOIS THIS \_\_\_\_\_ DAY OF \_\_\_\_\_ 20\_\_\_\_ A.D.  
ILLINOIS PROFESSIONAL LAND SURVEYOR NO. 2630  
LICENSE EXPIRATION DATE: 11-30-2012  
THIS PROFESSIONAL SERVICE CONFORMS TO THE CURRENT ILLINOIS MINIMUM STANDARDS FOR A BOUNDARY SURVEY.  
REVISOR: 4-22-11/DELETED 20PE-E, REVISED 20TE-F  
REVISOR: 4-13-11/ADDED 20PE-J, REVISED 20TE-F

See sheets 8, 10-20 & 27-28 for remainder of Parcel IDK0020. See Sheet 26 for total holding diagram.

PROP. CURVE21-2  
PI STA. =296+37.75  
Δ = 46° 11' 38" (RT)  
D = 2° 50' 00"  
R = 2,022.11'  
T = 862.37'  
L = 1,630.29'  
E = 176.21'  
e = -----  
T.R. = -----  
S.E. RUN = -----  
P.C. STA = 287+75.38  
P.T. STA = 304+05.67  
REVISED: 3-28-11/REVISED PARCEL TABLE  
REVISED: 4-22-11/REVISED 20PE-E, ADD 20TE-H AND 20PE-J & REVISE TE'S TO PARCEL 0020 PER IDOT TYPING IN TABLE  
REVISED PARCEL 0020TE-B UPDATED COORDINATE TABLE  
REVISION DATE: 8-24-10  
REVISION  
MADE BY TLW

PLAT OF HIGHWAYS  
STATE OF ILLINOIS  
DEPARTMENT OF TRANSPORTATION  
FAP 330 (IL 21)

SECTION: 128R-3 COUNTY: LAKE  
PROJECT JOB NO.: R-91-027-01  
STATION 296+00 TO STATION 301+00  
SCALE: 1"=30' SHEET 13 OF

BUREAU OF LAND ACQUISITION  
201 WEST CENTER COURT  
SCHAMBURG, ILLINOIS 60196