

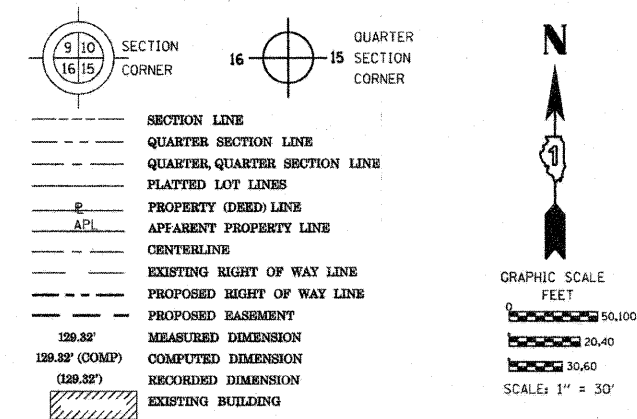
PART OF THE SE1/4 OF SECTION 5 AND THE SW1/4 OF SECTION 4, TWP. 44 N., R. 11 E. OF THE 3RD. P.M., IN LAKE COUNTY, ILLINOIS.

PARCEL NUMBER	OWNER	TOTAL HOLDINGS ACRES	PART TAKEN ACRES	AREA IN EXISTING R.O.W. ACRES	REMAINDER AREA ACRES	EASEMENT		EASEMENT PURPOSE	PERMANENT INDEX NUMBER	PROPERTY ACQUIRED BY
						ACRES	SQUARE FEET			
IDK0020	LAKE COUNTY FOREST PRESERVE	*802.4+/-	0.000	N/A	*802.4+/-	**	***	PROP. ROW CONST.	11-04-300-010 11-04-300-013 11-04-300-003 11-09-100-001 thru 004 11-04-100-005	
IDK0034	LAKE COUNTY FOREST PRESERVE DIST.	15.385	0.000	N/A	15.385	PE-0.167 TE-0.701	N/A	PROP. ROW CONST.	11-05-400-018 11-05-400-018-8001	

* Areas of contiguous property calculated using existing plats & records

** PE-A-0.009 391
PE-B-0.028 N/A
PE-C-0.035 N/A
PE-D-0.016 N/A
PE-F-0.075 N/A
PE-G-0.024 N/A
PE-H-0.597 N/A
PE-I-0.414 N/A
PE-J-0.058 N/A
TE-A-3.539 N/A
TE-B-0.040 N/A
TE-C-0.213 N/A
TE-D-0.085 N/A
TE-E-0.178 N/A
TE-F-1.975 N/A
TE-G-0.038 N/A
TE-H-0.050 N/A

LEGEND

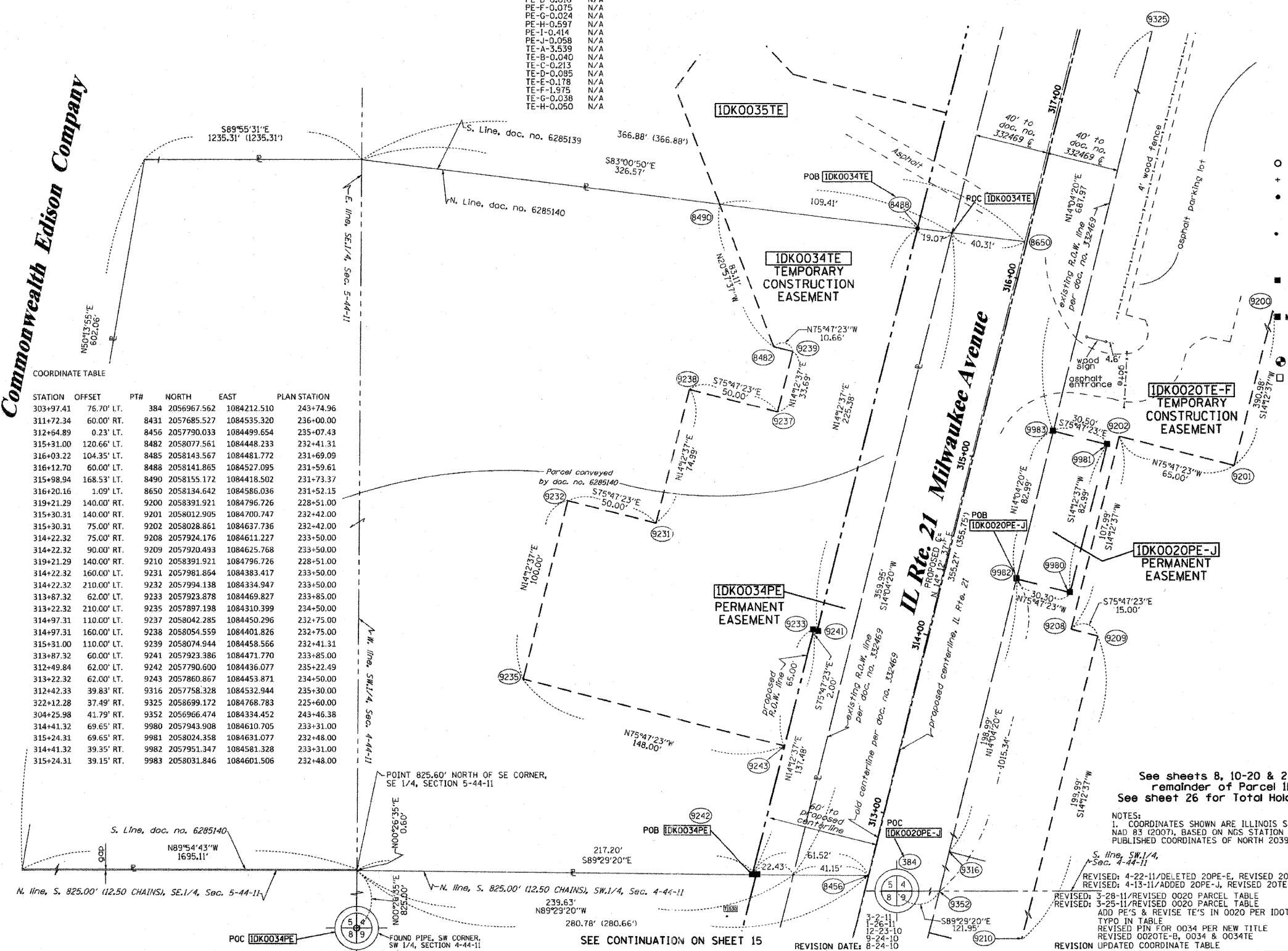


SEE CONTINUATION ON SHEET 17

Commonwealth Edison Company

COORDINATE TABLE

STATION	OFFSET	PTH	NORTH	EAST	PLAN STATION
303+97.41	76.70' LT.	384	2056967.562	1084212.510	243+74.96
311+72.34	60.00' RT.	8431	2057685.527	1084535.320	236+00.00
312+64.89	0.23' LT.	8456	2057790.033	1084499.654	235+07.43
315+31.00	120.66' LT.	8482	2058077.561	1084448.233	232+41.31
316+03.22	104.35' LT.	8485	2058143.567	1084481.772	231+69.09
315+98.94	60.00' LT.	8488	2058141.865	1084527.095	231+59.61
316+12.70	60.00' LT.	8490	2058155.172	1084418.502	231+73.37
316+20.16	1.09' LT.	8650	2058134.642	1084586.036	231+52.15
319+21.29	140.00' RT.	9200	2058391.921	1084796.726	228+51.00
315+30.31	140.00' RT.	9201	2058012.905	1084700.747	232+42.00
315+30.31	75.00' RT.	9202	2058028.861	1084637.736	232+42.00
314+22.32	75.00' RT.	9208	2057924.176	1084611.227	233+50.00
314+22.32	90.00' RT.	9209	2057920.493	1084625.768	233+50.00
319+21.29	140.00' RT.	9210	2058391.921	1084796.726	228+51.00
314+22.32	160.00' LT.	9231	2057981.864	1084383.417	233+50.00
314+22.32	210.00' LT.	9232	2057994.138	1084334.947	233+50.00
313+87.32	62.00' LT.	9233	2057923.878	1084469.827	233+85.00
313+22.32	210.00' LT.	9235	2057897.198	1084310.399	234+50.00
314+97.31	110.00' LT.	9237	2058042.285	1084450.296	232+75.00
314+97.31	160.00' LT.	9238	2058054.559	1084401.826	232+75.00
315+31.00	110.00' LT.	9239	2058074.944	1084458.566	232+41.31
313+87.32	60.00' LT.	9241	2057923.386	1084471.770	233+85.00
312+49.84	62.00' LT.	9242	2057790.600	1084436.077	235+22.49
313+22.32	62.00' LT.	9243	2057860.867	1084453.871	234+50.00
312+42.33	39.83' RT.	9316	2057758.328	1084532.944	235+30.00
322+12.28	37.49' RT.	9325	2058699.172	1084768.783	225+60.00
304+25.98	41.79' RT.	9352	2056966.474	1084334.452	243+46.38
314+41.32	69.65' RT.	9980	2057943.908	1084610.705	233+31.00
315+24.31	69.65' RT.	9981	2058024.358	1084631.077	232+48.00
314+41.32	39.35' RT.	9982	2057951.347	1084581.328	233+31.00
315+24.31	39.15' RT.	9983	2058031.846	1084601.506	232+48.00



STATE OF ILLINOIS)
COUNTY OF)

THIS IS TO CERTIFY THAT I, RONALD F. HODGEN, AN ILLINOIS PROFESSIONAL LAND SURVEYOR (WE, RUETTIGER, TONELLI & ASSOCIATES, AN ILLINOIS PROFESSIONAL DESIGN FIRM LAND SURVEYING CORPORATION, NUMBER 89,) HAVE SURVEYED THE PLAT OF HIGHWAYS SHOWN HEREIN IN SECTIONS 4 AND 5, TOWNSHIP 44 NORTH, RANGE 11 EAST OF THE THIRD PRINCIPAL MERIDIAN, LAKE COUNTY, THAT THE SURVEY IS TRUE AND COMPLETE AS SHOWN TO THE BEST OF MY KNOWLEDGE AND BELIEF, THAT THE PLAT CORRECTLY REPRESENTS SAID SURVEY, THAT ALL MONUMENTS FOUND AND ESTABLISHED ARE OF PERMANENT QUALITY AND OCCUPY THE POSITIONS SHOWN THEREON AND THAT THE MONUMENTS ARE SUFFICIENT TO ENABLE THE SURVEY TO BE RETRACED, MADE FOR THE DEPARTMENT OF TRANSPORTATION, STATE OF ILLINOIS.

DATED AT _____, ILLINOIS THIS _____ DAY OF _____ 20____ A.D.

ILLINOIS PROFESSIONAL LAND SURVEYOR NO. 2630
LICENSE EXPIRATION DATE: 11-30-2012

THIS PROFESSIONAL SERVICE CONFORMS TO THE CURRENT ILLINOIS MINIMUM STANDARDS FOR A BOUNDARY SURVEY.

RECEIVED
APR 27 2011
PLATS & LEGALS

RUETTIGER, TONELLI & ASSOCIATES, INC.
Land Surveyors/Engineers/Planners/Landscape Architects/G.I.S. Consultants
2114 ONEIDA STREET
JOLIET, ILLINOIS 60435
PH. 815/746-6600 FAX 815/744-0101

PLAT OF HIGHWAYS
STATE OF ILLINOIS
DEPARTMENT OF TRANSPORTATION
FAP 330 (IL 21)

SECTION: 128R-3 COUNTY: LAKE
PROJECT JOB NO.: R-91-027-01
STATION 313+00 TO STATION 317+00
SCALE: 1"=30' SHEET 16 OF

BUREAU OF LAND ACQUISITION
201 WEST CENTER COURT
SCHAUMBURG, ILLINOIS 60196

NOTES:
1. COORDINATES SHOWN ARE ILLINOIS STATE PLANE EAST ZONE, NAD 83 (2007), BASED ON NGS STATION MUND BM34 AND ITS PUBLISHED COORDINATES OF NORTH 2039591.13, EAST 1080478.83.
REVISED: 4-22-11/DELETED 20PE-E, REVISED 20TE-F
REVISED: 4-13-11/ADDED 20PE-J, REVISED 20TE-F
REVISED: 3-28-11/REVISED 0020 PARCEL TABLE
REVISED: 3-23-11/REVISED 0020 PARCEL TABLE
ADD PE'S & REVISE TE'S IN 0020 PER IDOT TYPO IN TABLE
REVISED PIN FOR 0034 PER NEW TITLE
REVISED 0020TE-B, 0034 & 0034TE
REVISED COORDINATE TABLE

MADE BY TLW