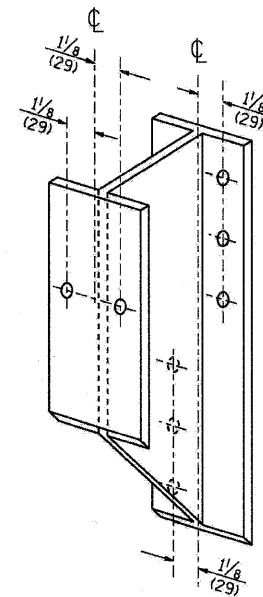
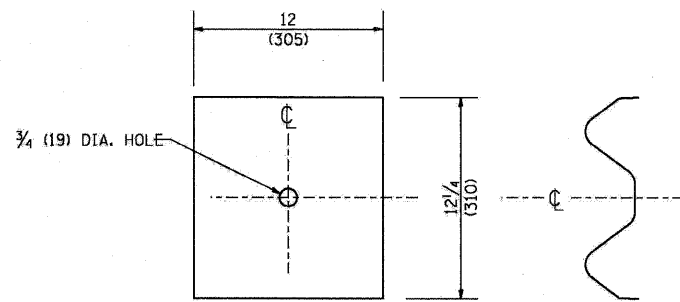


STEEL POST CONSTRUCTION



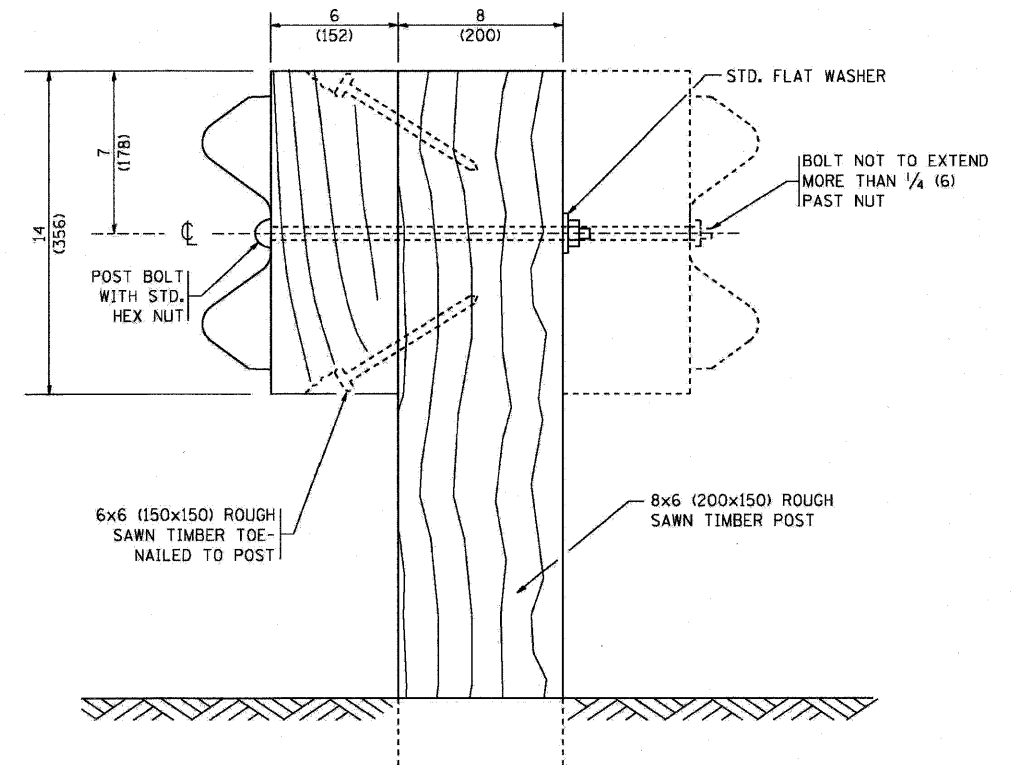
STEEL BLOCK-OUT DETAIL



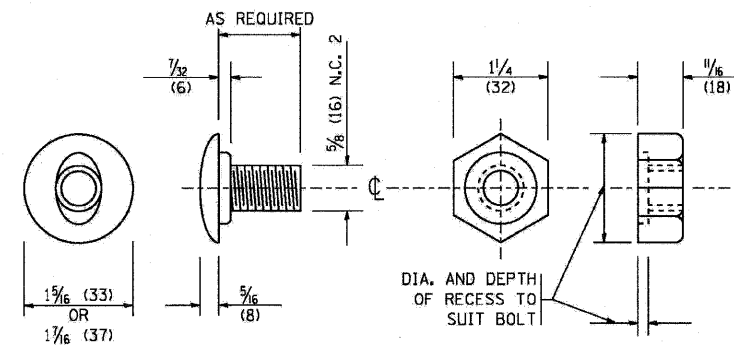
NOTE:

PLATE A SHALL BE PLACED BETWEEN RAIL ELEMENT AND BLOCK-OUT AT NON-SPLICE MOUNTING POINTS ONLY WHEN STEEL BLOCK-OUTS ARE USED.

PLATE A



WOOD POST CONSTRUCTION



POST OR SPLICE BOLT & NUT

FILE NAME = W:\dstate\22x34\bm21.dgn	USER NAME = geglent	DESIGNED -	REVISED - 10-31-06	STATE OF ILLINOIS DEPARTMENT OF TRANSPORTATION	REMOVE AND REERECT STEEL PLATE BEAM GUARDRAIL		F.A. RTE. = 330	SECTION = 128-I-3	COUNTY = LAKE	TOTAL SHEETS = 128	SHEET NO. = 67
PLOT SCALE = 50:0000' / IN.	CHECKED -	DRAWN -	REVISED -		SCALE: NONE	SHEET NO. 2 OF 4 SHEETS	STA. TO STA.	BM-21		CONTRACT NO. 60P33	
PLOT DATE = 1/4/2008	DATE -	CHECKED -	REVISED -		FED. ROAD DIST. NO. 1 ILLINOIS FED. AID PROJECT						
		DATE -	REVISED -								