

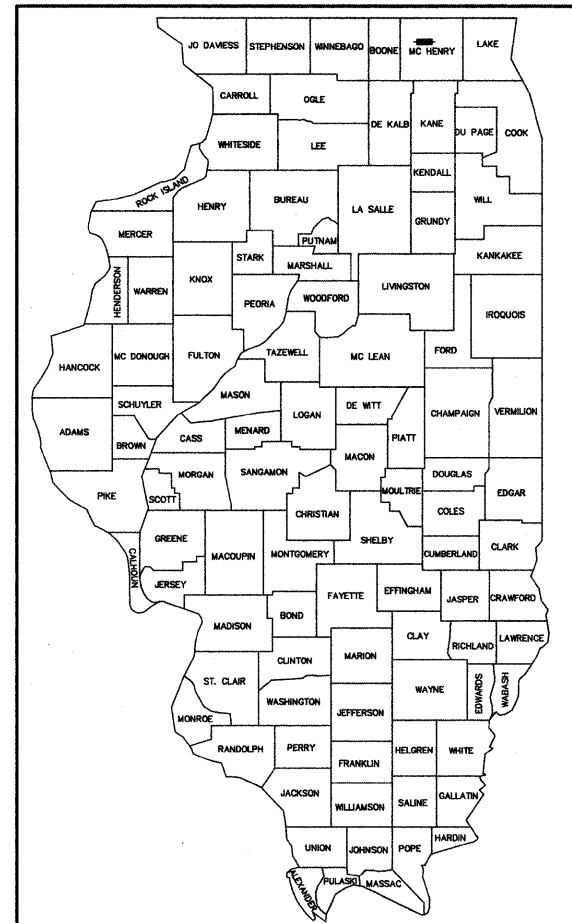
F.A.U. ROUTE	MUNICIPAL SECTION	COUNTY	TOTAL SHEETS	NO.
033	10-00111-00-SW	McHENRY	19	1
COVER SHEET				
F.H.W.A. REG.5 ILLINOIS CONTRACT NO. 63565				

STATE OF ILLINOIS DEPARTMENT OF TRANSPORTATION DIVISION OF HIGHWAYS

PLANS FOR PROPOSED FEDERAL AID HIGHWAY

SAFE ROUTES TO SCHOOL SIDEWALKS

FAU 0033 (SOUTH STREET) FRANKLINVILLE ROAD TO WESTWOOD SCHOOL DANE STREET : MARY ANNE STREET TO WEST OF OAK STREET SECTION 10-00111-00-SW PROJECT NO. SRTS-4009(012) CITY OF WOODSTOCK MCHENRY COUNTY JOB NO. C-40-003-10



LOCATION OF SECTION INDICATED THUS: — ■ —

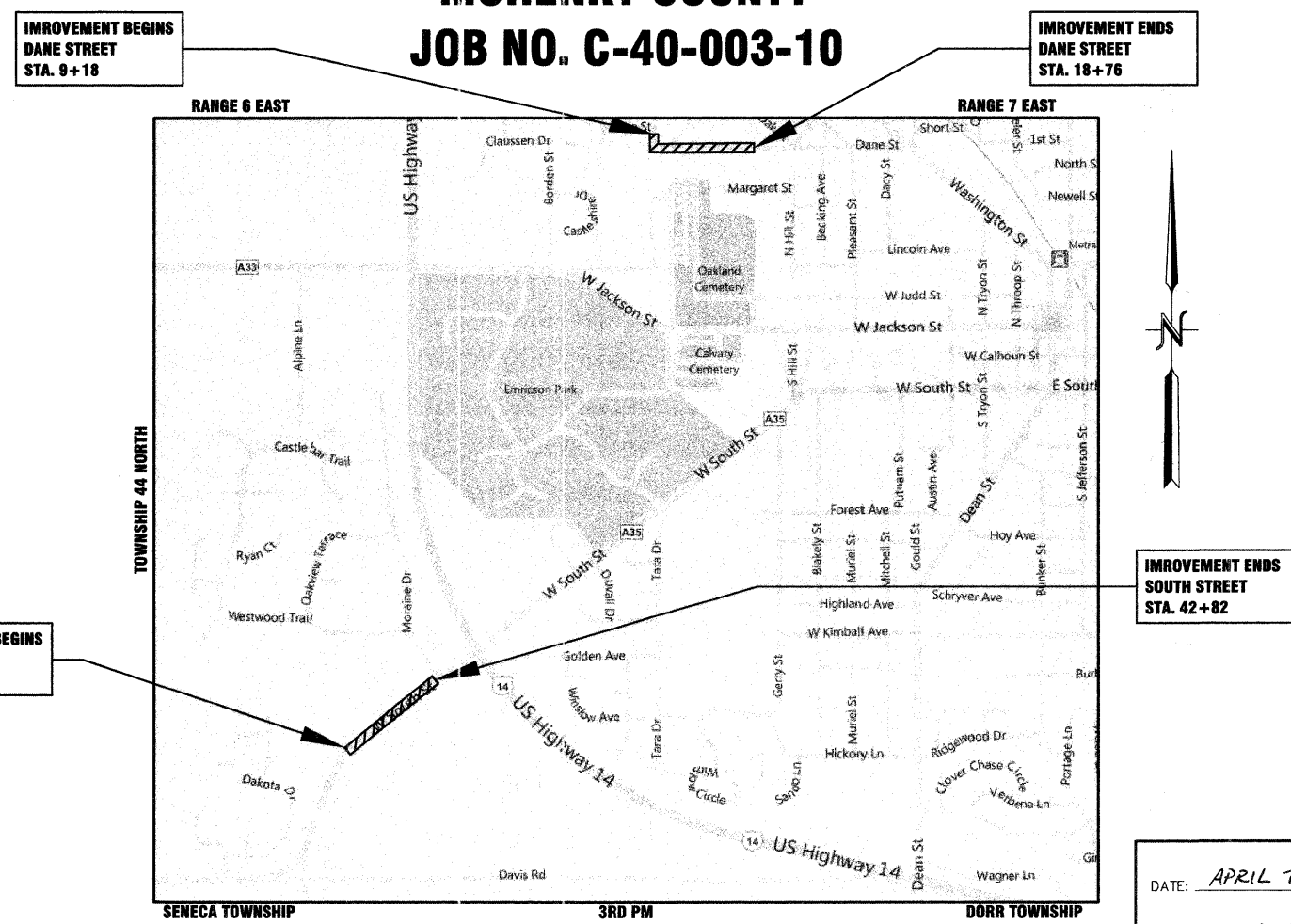
STATE OF ILLINOIS
 DEPARTMENT OF TRANSPORTATION
 DIVISION OF HIGHWAYS

APPROVED April 7 2011
[Signature]
 CITY OF WOODSTOCK

APPROVED April 7 2011
[Signature]
 WOODSTOCK CUSD 200

PASSED April 13 2011
[Signature]
 DISTRICT 1 ENGINEER OF LOCAL ROADS AND STREETS

RELEASING FOR BID
 BASED ON LIMITED
 REVIEW April 13, 2011
[Signature]
 DEPUTY DIRECTOR OF HIGHWAYS REGION 1 ENGINEER

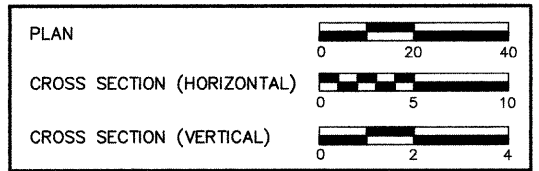


3RD PM
 LOCATION MAP
 APPROXIMATE SCALE 1" = 455'
 SOUTH STREET GROSS AND NET LENGTH OF PROJECT = 727 LF (0.14 MILE)
 DANE STREET GROSS AND NET LENGTH OF PROJECT = 957 LF (0.18 MILE)
 TOTAL LENGTH OF PROJECT = 1684 LF (0.32 MILE)

INDEX TO SHEETS	
SHEET NO.	DESCRIPTION
1	COVER SHEET
2	GENERAL NOTES, TYPICAL SECTIONS
3	SUMMARY OF QUANTITIES
4	SCHOOL PARKING LOT PLAN AND PROFILE
5	SOUTH STREET PLAN AND PROFILE
6-10	SCHOOL PARKING LOT AND SOUTH STREET CROSS SECTIONS
11-12	DANE STREET PLAN AND PROFILE
13-18	DANE STREET CROSS SECTIONS
19	DISTRICT 1 STANDARDS

STATE STANDARDS	
000001-06	STANDARD SYMBOLS, ABBREVIATIONS AND PATTERNS
280001-05	TEMPORARY EROSION CONTROL SYSTEMS
424001-05	CURB RAMPS FOR SIDEWALKS
542301-03	ROUND PRECAST REINFORCED CONCRETE FLARED END SECTION
542401-01	METAL END SECTION FOR PIPE CULVERT
602011-02	CATCH BASIN, TYPE C
604051-03	FRAME AND GRATE TYPE 11
606001-04	CONCRETE CURB TYPE B AND COMBINATION CURB AND GUTTER
701006-03	OFF ROAD OPERATIONS, 2L, 2W, 15' (4.5m) TO 24" (600mm) FROM PAVEMENT EDGE
701301-04	LANE CLOSURE, 2L, 2W, SHORT TIME OPERATIONS
701311-03	LANE CLOSURE, 2L, 2W, MOVING OPERATIONS, DAY ONLY
701501-06	URBAN LANE CLOSURE, 2L, 2W, UNDIVIDED
701801-04	LANE CLOSURE MULTILANE 1W OR 2W CROSSWALK OR SIDEWALK CLOSURE
701901-01	TRAFFIC CONTROL DEVICES

**PRINTED BY THE AUTHORITY
 OF THE STATE OF ILLINOIS**



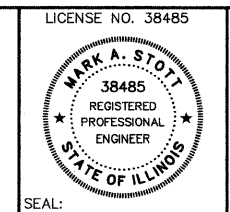
SOUTH STREET:
 ADT = 2600
 POSTED SPEED LIMIT = 40 MPH
 DESIGN SPEED 40 MPH
 FUNCTIONAL CLASSIFICATION = ARTERIAL

DANE STREET:
 ADT = 2000
 POSTED SPEED LIMIT = 30 MPH
 DESIGN SPEED 30 MPH
 FUNCTIONAL CLASSIFICATION = LOCAL
 CONTRACT NO. 63565



PROGRAM AND OFFICE ENGINEER: CHARLES F. RIDDLE, P.E. 847-705-4406 SCHAUMBURG, IL

DATE: APRIL 7, 2011
 BY: *[Signature]*
 LICENSE EXPIRES: NOVEMBER 30, 2011



HLR
 Account Number
 10.0180.330
 Hampton Lenzini and Renwick, Inc.
 Civil Engineers
 Land Surveyors
 380 Shepard Drive
 Elgin, Illinois 60123-7010
 847.697.6700

GENERAL NOTES

ALL WORK SHALL BE IN ACCORDANCE WITH THE "STANDARD SPECIFICATIONS FOR ROAD AND BRIDGE CONSTRUCTION," ADOPTED JANUARY 1, 2007, (HEREINAFTER REFERRED TO AS THE STANDARD SPECIFICATIONS); THE "SUPPLEMENTAL SPECIFICATIONS AND RECURRING SPECIAL PROVISIONS," ADOPTED JANUARY 1, 2011; THE LATEST EDITION OF THE "ILLINOIS MANUAL ON UNIFORM TRAFFIC CONTROL DEVICES FOR STREETS AND HIGHWAYS"; THE DETAILS IN THE PLANS AND THE SPECIAL PROVISIONS INCLUDED IN THE CONTRACT DOCUMENTS.

ANY REFERENCE TO STANDARDS THROUGHOUT THE PLANS OR SPECIAL PROVISIONS SHALL BE INTERPRETED AS THE LATEST STANDARD OF THE ILLINOIS DEPARTMENT OF TRANSPORTATION.

THE CONTRACTOR SHALL COOPERATE WITH THE CITY OF WOODSTOCK IF ANY MUNICIPAL UTILITY IMPROVEMENTS ARE REQUIRED WITHIN THE DURATION OF THE CONTRACT.

THE CONTRACTOR SHALL BE RESPONSIBLE FOR CONTACTING THE OWNERS OF ALL UTILITIES PRIOR TO CONSTRUCTION TO DETERMINE THE LOCATION OF ALL UTILITY EQUIPMENT. THE CONTRACTOR SHALL COOPERATE WITH ALL UTILITY OWNERS AS PROVIDED FOR IN THE STANDARD SPECIFICATIONS IF UTILITY RELOCATION, ADJUSTMENT OR PROTECTION IS NECESSARY.

THE LOCATION ON THE PLANS OF EXISTING DRAINAGE STRUCTURES, STORM SEWERS, WATER MAINS, SANITARY SEWERS, AND ANY OTHER PUBLIC AND PRIVATE UTILITIES IS APPROXIMATE AND THEIR EXACT LOCATIONS ARE TO BE DETERMINED IN THE FIELD BY THE CONTRACTOR AT THE CONTRACTOR'S EXPENSE.

THE CONTRACTOR SHALL BE RESPONSIBLE FOR THE PROTECTION OF ALL UNDERGROUND OR SURFACE UTILITIES EVEN THOUGH THEY MAY NOT BE SHOWN ON THE PLANS. ANY UTILITY THAT IS DAMAGED DURING CONSTRUCTION SHALL BE REPAIRED OR REPLACED TO THE SATISFACTION OF THE OWNER AT THE CONTRACTOR'S EXPENSE.

THE CONTRACTOR SHALL PROTECT AND CAREFULLY PRESERVE ALL SECTION OR SUBSECTION MONUMENTS, PROPERTY CORNERS AND REFERENCE MARKERS UNTIL THE OWNER, HIS AGENT OR A PROFESSIONAL LAND SURVEYOR HAS WITNESSED OR OTHERWISE REFERENCED THEIR LOCATIONS.

ALL ELEVATIONS ARE ON AN ASSUMED LOCAL DATUM.

WHENEVER ANY LOOSE MATERIAL IS DEPOSITED IN THE FLOW LINE OF DRAINAGE STRUCTURES SUCH THAT THE NATURAL FLOW OF WATER IS OBSTRUCTED, THE MATERIAL SHALL BE REMOVED AT THE CLOSE OF EACH WORKING DAY. PRIOR TO ACCEPTANCE OF THE IMPROVEMENT, ALL DRAINAGE STRUCTURES SHALL BE FREE OF DIRT AND DEBRIS. THIS WORK WILL NOT BE PAID FOR SEPARATELY BUT SHALL BE INCLUDED IN THE COST OF THE CONTRACT.

WHEN EXISTING DRAINAGE FACILITIES ARE DISTURBED, THE CONTRACTOR SHALL PROVIDE AND MAINTAIN IN AN OPERATING CONDITION TEMPORARY OUTLETS AND CONNECTIONS FOR ALL DRAINS, SEWERS AND CATCH BASINS. THIS WORK WILL NOT BE PAID FOR SEPARATELY, BUT SHALL BE INCLUDED IN THE COST OF THE CONTRACT.

THE CONTRACTOR SHALL BE SOLELY RESPONSIBLE FOR HIS WORK. ANY WORK THAT IS VANDALIZED OR OTHERWISE DAMAGED AND JUDGED UNACCEPTABLE BY THE CITY SHALL BE REMOVED AND REPLACED AT THE CONTRACTOR'S EXPENSE.

FORTY-EIGHT HOURS BEFORE STARTING EXCAVATION, THE CONTRACTOR WILL CALL J.U.L.I.E. (1-800-892-0123) TO HAVE THE LOCATION OF EXISTING UTILITIES STAKED.

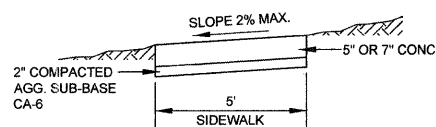
HOT-MIX ASPHALT MIXTURE REQUIREMENTS	
MIXTURE TYPE	AIR VOIDS
DRIVEWAYS	
HMA SURFACE COURSE, MIX C, N50 (IL 9.5mm), 2"	4% @ 50 GYR.
HMA BASE COURSE (HMA BINDER IL-19.0), 2"	4% @ 50 GYR.
SHOULDERS	
HMA SURFACE COURSE, MIX C, N50 (IL 9.5mm), 2"	4% @ 50 GYR.
HMA BASE COURSE (HMA BINDER IL-19.0), 4"	4% @ 50 GYR.

THE UNIT WEIGHT USED TO CALCULATE ALL HMA SURFACE MIXTURE QUANTITIES IS 112 LBS/SQ YD/IN.

THE "AC TYPE" FOR POLYMERIZED HMA MIXES SHALL BE SBS/SBR 70-22 AND FOR NON-POLYMERIZED HMA, THE "AC TYPE" SHALL BE PG 64-22 UNLESS MODIFIED BY DISTRICT ONE SPECIAL PROVISIONS.

FOR PERCENT OF RAP, SEE DISTRICT ONE SPECIAL PROVISIONS.

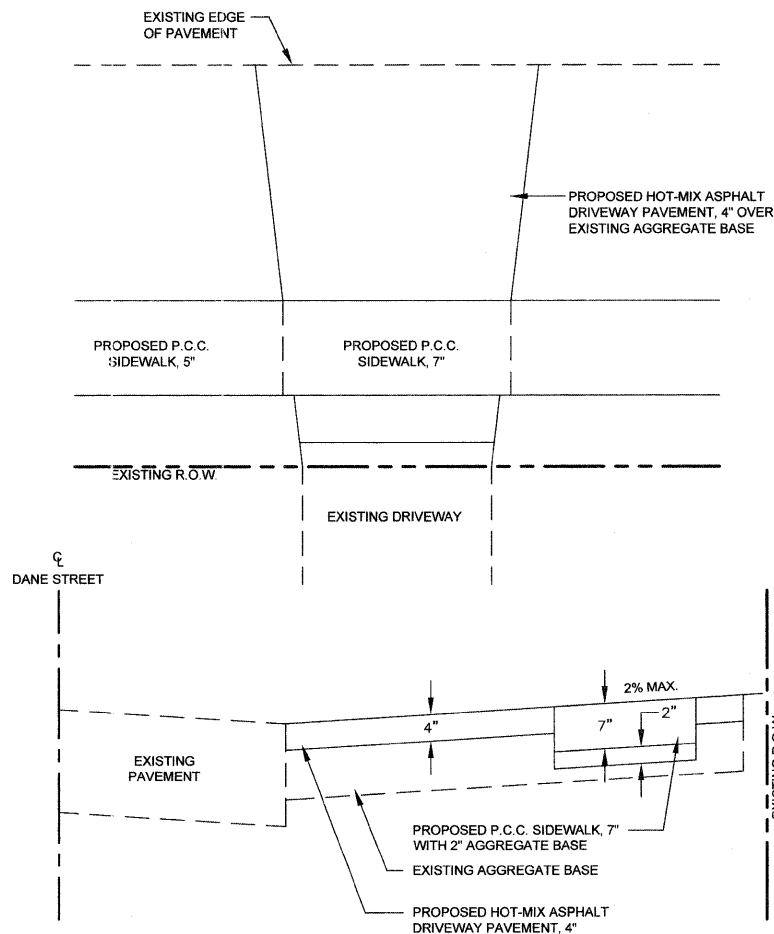
SIDEWALK DETAIL



NOTES:

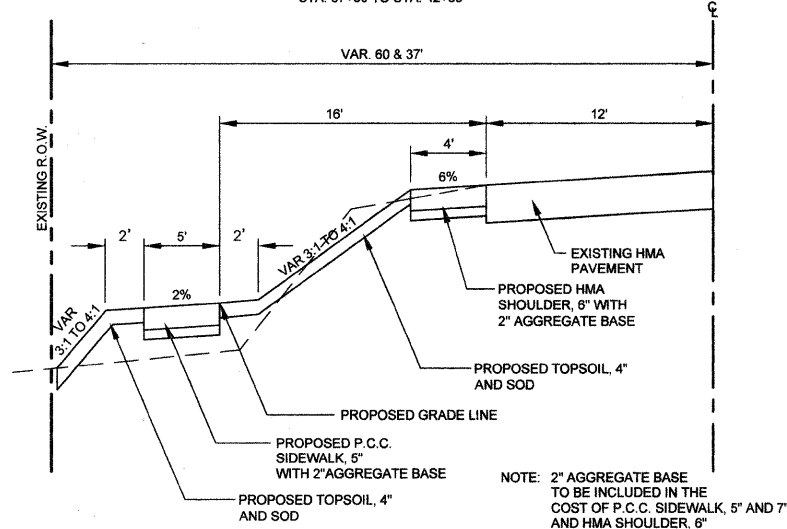
1. CONCRETE SHALL BE IDOT CLASS S1.
2. MINIMUM SIDEWALK THICKNESS SHALL BE 5".
3. SIDEWALK THICKNESS ACROSS DRIVEWAYS SHALL BE MINIMUM 7" FOR RESIDENTIAL DRIVEWAYS.
4. MAXIMUM LONGITUDINAL SLOPE SHALL NOT EXCEED 6%.
5. MAXIMUM TRANSVERSE SLOPE SHALL BE (2%).
6. A MINIMUM TWO (2) INCH AGGREGATE SUB-BASE (CA-6) SHALL BE PROVIDED.
7. AGGREGATE SUB-BASE COURSE SHALL BE MECHANICALLY COMPACTED.
8. ALL SIDEWALKS SHALL BE PROMPTLY BACKFILLED AND PROTECTED FROM DAMAGE.

DRIVEWAY DETAIL



**SOUTH STREET
PROPOSED TYPICAL SECTION**

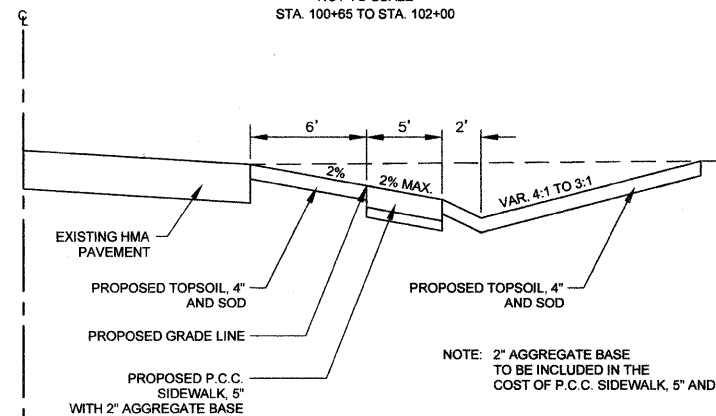
NOT TO SCALE
STA. 37+30 TO STA. 42+83



NOTE: 2" AGGREGATE BASE TO BE INCLUDED IN THE COST OF P.C.C. SIDEWALK, 5" AND 7" AND HMA SHOULDER, 6"

**SCHOOL PARKING LOT
PROPOSED TYPICAL SECTION**

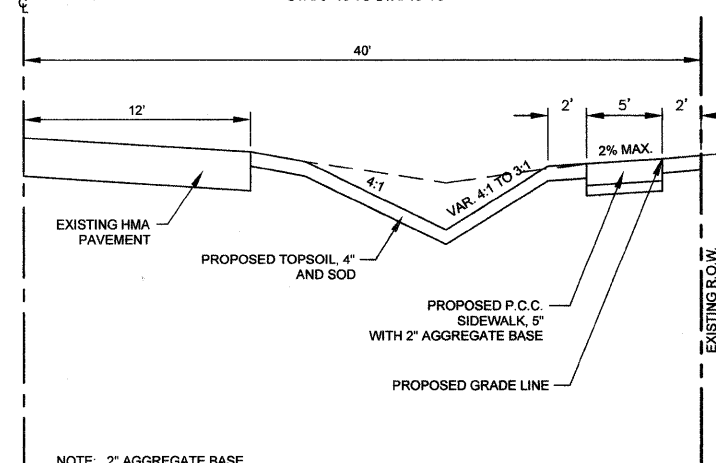
NOT TO SCALE
STA. 100+65 TO STA. 102+00



NOTE: 2" AGGREGATE BASE TO BE INCLUDED IN THE COST OF P.C.C. SIDEWALK, 5" AND 7"

**DANE STREET
PROPOSED TYPICAL SECTION**

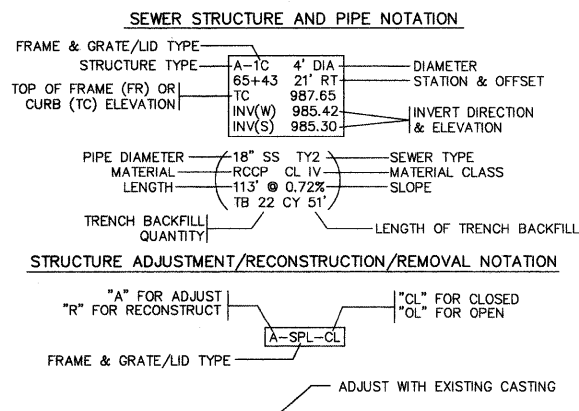
NOT TO SCALE
STA. 9+18 TO STA. 18+76



NOTE: 2" AGGREGATE BASE TO BE INCLUDED IN THE COST OF P.C.C. SIDEWALK, 5" AND 7"

LEGEND

- EXISTING BUSH
- EXISTING DECIDUOUS TREE
- STREET ADDRESS
- EXISTING DRAINAGE MANHOLE
- PROPOSED DRAINAGE MANHOLE
- PROPOSED CATCH BASIN
- PROPOSED INLET
- EXISTING STORM SEWER
- PROPOSED STORM SEWER
- EXISTING UNDERGROUND GAS
- EXISTING LIGHT STANDARD
- EXISTING HANDHOLE
- MAIL BOX
- EXISTING POWER POLE
- DEPRESSED CURB
- BITUMINOUS SURFACE REMOVAL
- PAVEMENT REMOVAL AND REPLACEMENT
- CURB AND GUTTER REMOVAL
- SIDEWALK REMOVAL
- DETECTABLE WARNINGS
- DRIVEWAY PAVEMENT REMOVAL



P:\2010\100180\cad\Phase 2\dwg\100180-Sht-Cover.dwg
 Apr 07, 2011 at 11:14
 Layout: 02-Note, Login Name: steves

FILE NAME =	USER NAME =	DESIGNED -- DAY	REVISED -- 9-20-10
P:\2010\100180\cad\Phase 2\dwg\100180-Sht-Cover.dwg		DRAWN -- AC	REVISED -- 2-3-11
Apr 07, 2011 at 11:14		CHECKED -- MAS	REVISED -- 3-11-11
Layout: 02-Note		DATE -- 9-20-10	REVISED -- 4-6-11

**STATE OF ILLINOIS
DEPARTMENT OF TRANSPORTATION**



**WOODSTOCK SAFE ROUTES
GENERAL NOTES & TYPICAL SECTIONS**

SCALE: SHEET NO. OF SHEETS STA. 14+00 TO STA. 18+75.63

F.A.U. RTE.	SECTION	COUNTY	TOTAL SHEETS	SHEET NO.
033	10-00111-00-SW	MCHENRY	19	2
CONTRACT NO. 63565			ILLINOIS FED. AID PROJECT	

SUMMARY OF QUANTITIES

PI#	ITEM DESCRIPTION	UNIT	QTY	CONSTRUCTION CODE	SPECIAL PROVISION	SP ITEM
20100110	TREE REMOVAL (6 TO 15 UNITS DIAMETER)	UNIT	93	0021		
20100210	TREE REMOVAL (OVER 15 UNITS DIAMETER)	UNIT	96	0021		
20101100	TREE TRUNK PROTECTION	EACH	8	0021		△
20101200	TREE ROOT PRUNING	EACH	8	0021		△
20200100	EARTH EXCAVATION	CJ YD	818	0021	*	
20400800	FURNISHED EXCAVATION	CJ YD	100	0021	*	
20800150	TRENCH BACKFILL	CJ YD	84	0021		
21101615	TOPSOIL FURNISH AND PLACE, 4"	SQ YD	4031	0021		△
25000400	NITROGEN FERTILIZER NUTRIENT	POUND	51	0021		△
25000600	POTASSIUM FERTILIZER NUTRIENT	POUND	61	0021		△
25200110	SODDING, SALT TOLERANT	SQ YD	4031	0021		△
25200200	SUPPLEMENTAL WATERING	UNIT	121	0021		△
28000250	TEMPORARY EROSION CONTROL SEEDING	POUND	81	0021		
28000305	TEMPORARY DITCH CHECKS	FOOT	20	0021		
28000400	PERIMETER EROSION BARRIER	FOOT	735	0021		
28000500	INLET AND PIPE PROTECTION	EACH	10	0021		
35101400	AGGREGATE BASE COURSE, TYPE B	TON	60	0021		
42001300	PROTECTIVE COAT	SQ YD	988	0021		
42400200	PORTLAND CEMENT CONCRETE SIDEWALK 5 INCH	SQ FT	7730	0021	*	
42400400	PORTLAND CEMENT CONCRETE SIDEWALK 7 INCH	SQ FT	825	0021	*	
42400800	DETECTABLE WARNINGS	SQ FT	26	0021		


PI#	ITEM DESCRIPTION	UNIT	QTY	CONSTRUCTION CODE	SPECIAL PROVISION	SP ITEM
44000200	DRIVEWAY PAVEMENT REMOVAL	SQ YD	555	0021	*	
44000500	COMBINATION CURB AND GUTTER REMOVAL	FOOT	115	0021		
44000600	SIDEWALK REMOVAL	SQ FT	124	0021		
44213200	SAW CUTS	FOOT	726	0021		
48203021	HOT-MIX ASPHALT SHOULDERS, 6"	SQ YD	187	0021	*	
50105220	PIPE CULVERT REMOVAL	FOOT	90	0021	*	
54200217	PIPE CULVERTS, CLASS D, TYPE 1 12"	FOOT	250	0021		
54200229	PIPE CULVERTS, CLASS D, TYPE 1 24"	FOOT	10	0021		
54213657	PRECAST REINFORCED CONCRETE FLARED END SECTIONS 12"	EACH	1	0021		
54213660	PRECAST REINFORCED CONCRETE FLARED END SECTIONS 15"	EACH	1	0021		
54213867	STEEL END SECTIONS 12"	EACH	18	0021		
54213879	STEEL END SECTIONS 24"	EACH	1	0021		
550A0050	STORM SEWERS, CLASS A, TYPE 1 12"	FOOT	24	0021		
550A0070	STORM SEWERS, CLASS A, TYPE 1 15"	FOOT	14	0021		
55100200	STORM SEWER REMOVAL 6"	FOOT	75	0021		
55100300	STORM SEWER REMOVAL 8"	FOOT	497	0021		
56500600	DOMESTIC WATER SERVICE BOXES TO BE ADJUSTED	EACH	1	0021	*	
60500050	REMOVING CATCH BASINS	EACH	5	0021		
60603800	COMBINATION CONCRETE CURB AND GUTTER, TYPE B-6.12	FOOT	170	0021		
67100100	MOBILIZATION	L SUM	1	0021		
70102620	TRAFFIC CONTROL AND PROTECTION, STANDARD 701501	L SUM	1	0021	*	
70102640	TRAFFIC CONTROL AND PROTECTION, STANDARD 701801	L SUM	1	0021		
Z0004514	HOT-MIX ASPHALT DRIVEWAY PAVEMENT, 4"	SQ YD	463	0021	*	
A2000116	TREE, ACER X FREEMAN AUTUMN BLAZE (AUTUMN BLAZE FREEMAN MAPLE), 2" CALIPER, BALLED AND BURLAPPED	EACH	12	0021		△
X6029510	CATCH BASINS, TYPE C, WITH SPECIAL FRAME AND GRATE	EACH	1	0021	*	

EARTHWORK SUMMARY

LOCATION	EARTH EXCAVATION(CY)	UNSUITABLE MATERIAL(CY)	EXCAVATION TO BE USED IN EMBANKMENT(CY)	EMBANKMENT(CY)	EARTHWORK BALANCE(CY)
SOUTH STREET	373	187	140	211	-71
DANE STREET	445	223	167	16	151
TOTAL	818	409	307	227	80

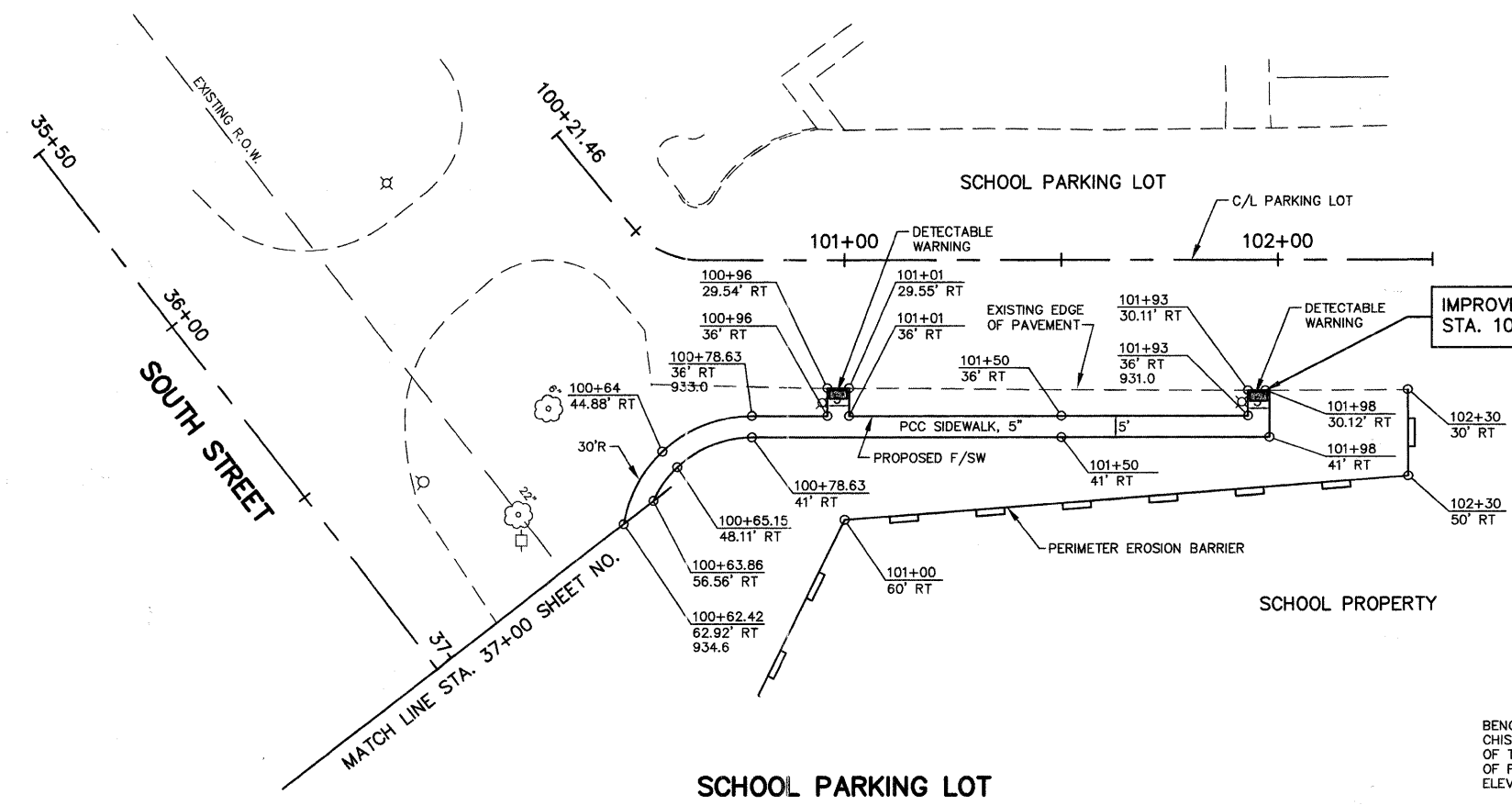
EARTH EXCAVATION (CUT) AND EMBANKMENT (FILL) FROM CROSS SECTIONS
 UNSUITABLE MATERIAL ASSUMED TO BE 50%
 EXCAVATION TO BE USED IN EMBANKMENT ADJUSTED FOR 25% SHRINKAGE
 EARTHWORK BALANCE
 (-) SHORTAGE
 (+) WASTE

P:\2010\100180\cad\Phase 2\dwg\100180-Sht-Cover.dwg
 Apr 07, 2011 at 11:18
 Layout: 03-Summary of Quantities, Login Name: steves

FILE NAME =	USER NAME =	DESIGNED -- DAY	REVISED -- 9-20-10	STATE OF ILLINOIS DEPARTMENT OF TRANSPORTATION		WOODSTOCK SAFE ROUTES SUMMARY OF QUANTITIES		F.A.U. RTE.	SECTION	COUNTY	TOTAL SHEETS	SHEET NO.
PLOT SCALE =	CHECKED -- MAS	REVISED -- 2-3-11	033					10-00111-00-SW	MCHENRY	19	3	
PLOT DATE =	DATE -- 9-20-10	REVISED -- 3-11-11	CONTRACT NO. 63565									
				SCALE:	SHEET NO. OF SHEETS	STA. 14+00 TO STA. 18+75.63	FED. ROAD DIST. NO. ILLINOIS FED. AID PROJECT					

DATE	
BY	
SURVEYED	
PLOTTED	
CHECKED	
RT. OF WAY CHECKED	
CADD FILE NAME	
NO.	
PLAN	
NOTE BOOK	
NO.	

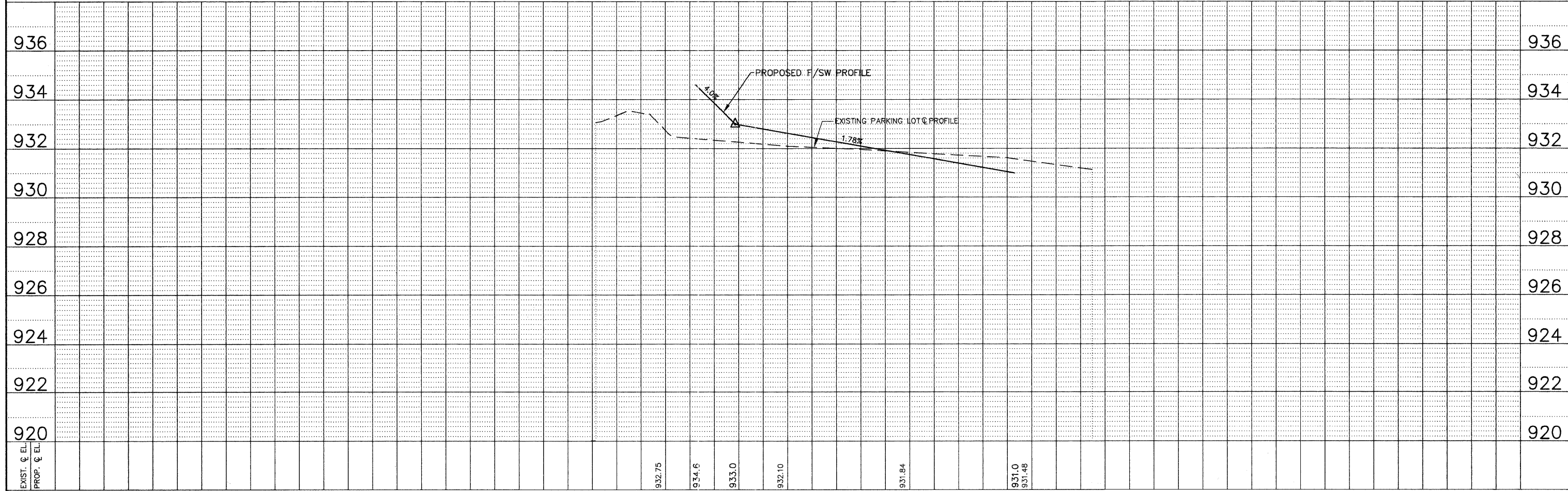
DATE	
BY	
SURVEYED	
PLOTTED	
CHECKED	
STRUCTURE NOTATIONS CRD	
NO.	
PROFILE	
NOTE BOOK	
NO.	



ALL DISTURBED AREAS SHALL BE RESTORED WITH TOPSOIL, 4", SEEDING CLASS 2A, AND EROSION CONTROL BLANKET.

BENCHMARK:
CHISELED SQUARE ON NORTHERLY CORNER
OF THE CONCRETE PAD AT THE DEAD END
OF FRANKLINVILLE ROAD.
ELEVATION: 933.54

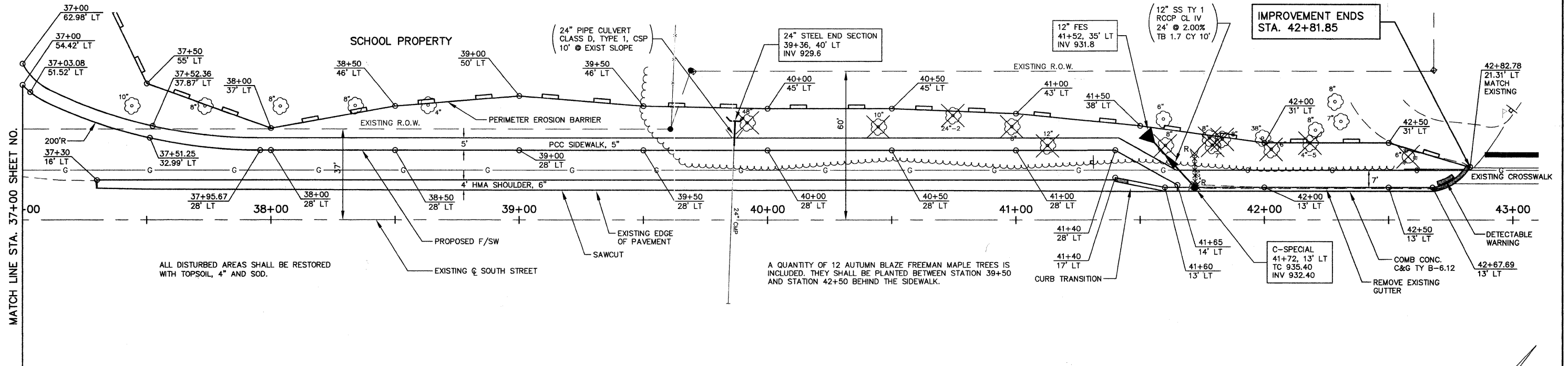
SCALE: 1"=20'



FILE NAME = P:\2010\100180\cad\phase 2\dwg\100180-ah1-pp-parking.dwg Feb 07, 2011 at 8:49 Layout: Parking PP 1	USER NAME =	DESIGNED - DAY	REVISED - 9-20-10	STATE OF ILLINOIS DEPARTMENT OF TRANSPORTATION		SCHOOL PARKING LOT PLAN AND PROFILE		F.A.U. RTE	SECTION	COUNTY	TOTAL SHEETS	SHEET NO.
PLOT SCALE =	CHECKED - MAS	REVISED - 2-3-11	033			10-00111-00-SW	MCHENRY	19	4			
PLOT DATE =	DATE - 9-20-10	REVISED -	SCALE: 1" = 20'			SHEET NO. OF SHEETS STA. 100+21.46 TO STA. 102+25		CONTRACT NO. 63565				
			FED. ROAD DIST. NO.			ILLINOIS FED. AID PROJECT						

DATE	
BY	
PLAN	
NO.	
DATE	
BY	
PROFILE	
NO.	

DATE	
BY	
PROFILE	
NO.	
DATE	
BY	
PLAN	
NO.	

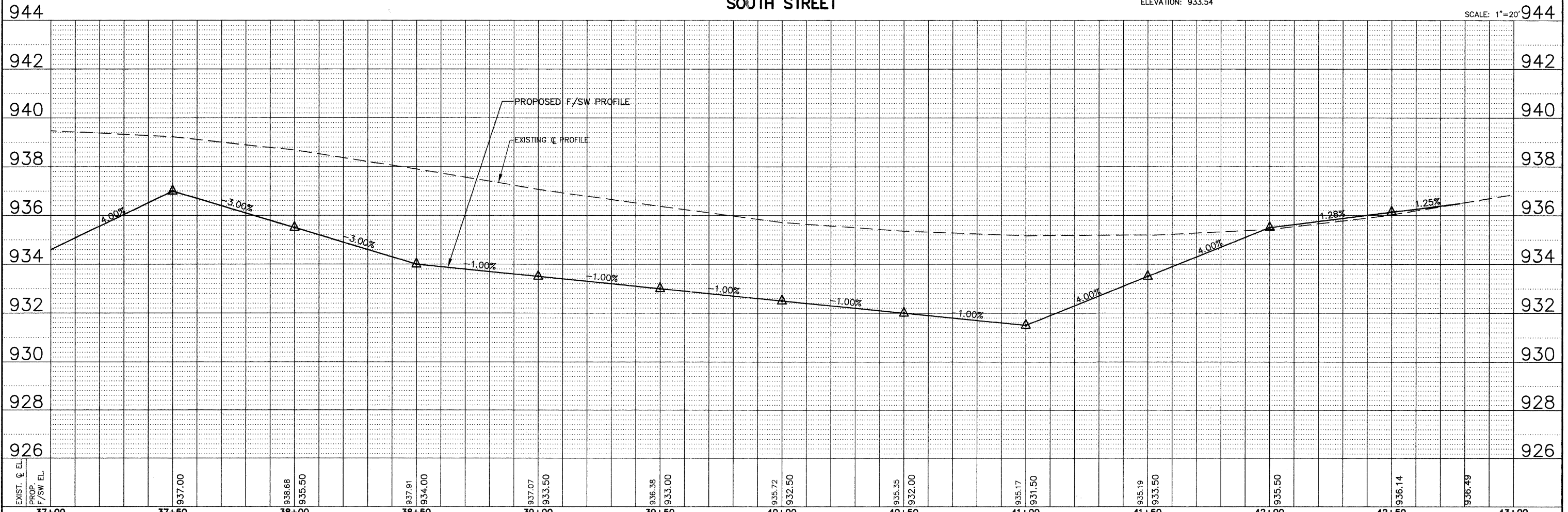


ALL DISTURBED AREAS SHALL BE RESTORED WITH TOPSOIL, 4" AND SOD.

A QUANTITY OF 12 AUTUMN BLAZE FREEMAN MAPLE TREES IS INCLUDED. THEY SHALL BE PLANTED BETWEEN STATION 39+50 AND STATION 42+50 BEHIND THE SIDEWALK.

BENCHMARK:
CHISELED SQUARE ON NORTHERLY CORNER
OF THE CONCRETE PAD AT THE DEAD END
OF FRANKLINVILLE ROAD.
ELEVATION: 933.54

SOUTH STREET

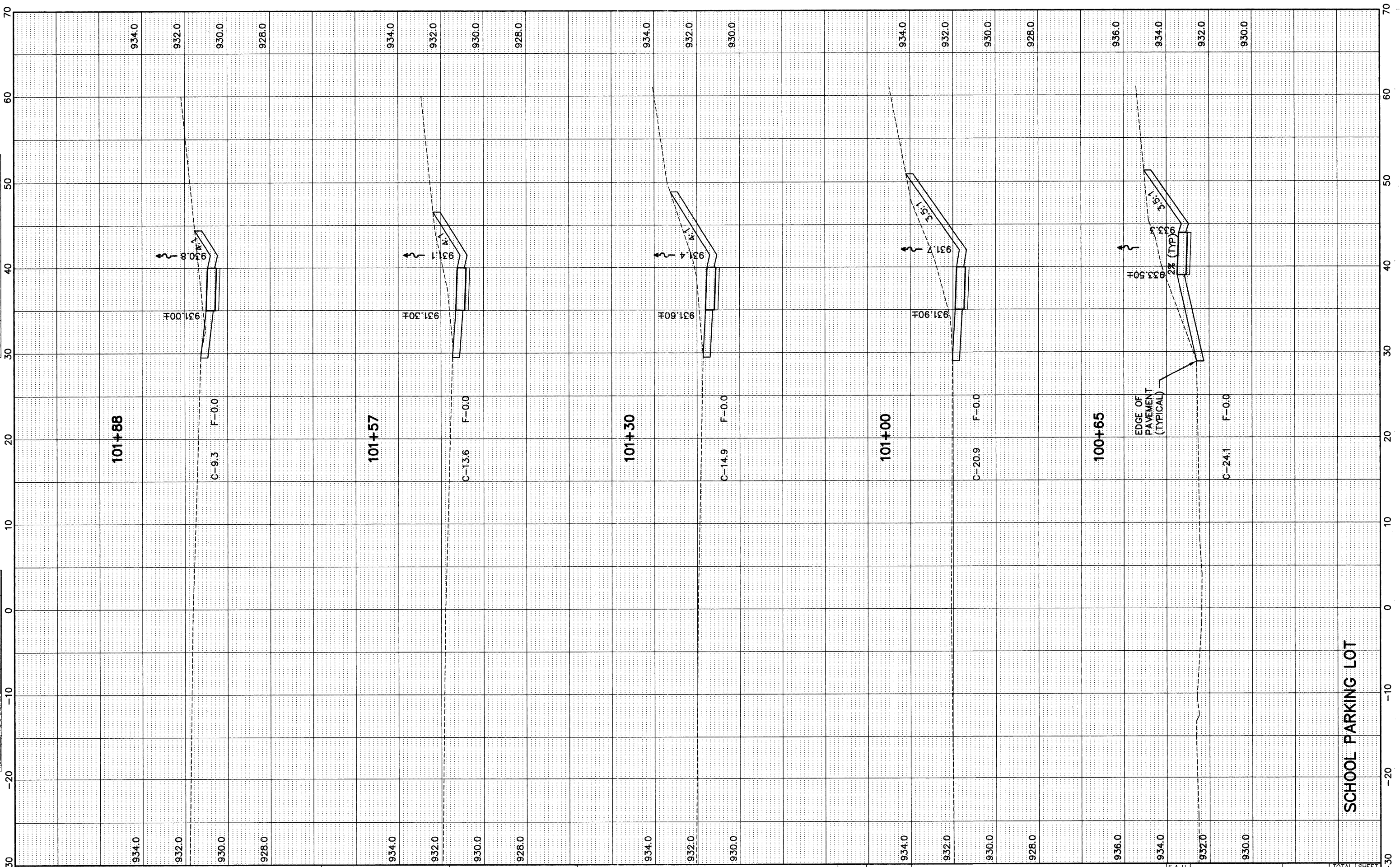


FILE NAME =	USER NAME =	DESIGNED - DAY	REVISED - 9-20-10	STATE OF ILLINOIS DEPARTMENT OF TRANSPORTATION		SOUTH STREET		F.A.U. RTE.	SECTION	COUNTY	TOTAL SHEETS	SHEET NO.
P:\2010\100180\cad\Phase 2\dwg\100180-sh1-pp-south.dwg		DRAWN - AC	REVISED - 2-3-11			033	10-00111-00-SW	MCHENRY	19	5		
Apr 07, 2011 at 11:22		CHECKED - MAS	REVISED - 3-11-11			CONTRACT NO. 63565						
Layout: South PP 1		DATE - 9-20-10	REVISED - 4-6-11			ILLINOIS FED. AID PROJECT						

SCALE: 1" = 20' SHEET NO. OF SHEETS STA. 37+00 TO STA. 43+00

FINAL SURVEY	BY	DATE
SURVEYED		
PLOTTED		
NOTE BOOK		
NO.		
AREAS CHECKED		

ORIGINAL SURVEY	BY	DATE
SURVEYED		
PLOTTED		
NOTE BOOK		
NO.		
AREAS CHECKED		



FILE NAME = P:\2010\100180\load\Phase 2\dwg\100180-sht-xs-parking lot.dwg
 Apr 07, 2011 at 11:23
 Layout: Parking-1

USER NAME =	DESIGNED - DAY	REVISED - 9-16-10
	DRAWN - AC	REVISED - 2-3-11
PLOT SCALE =	CHECKED - MAS	REVISED - 4-6-11
PLOT DATE =	DATE - 9-16-10	REVISED -

STATE OF ILLINOIS
DEPARTMENT OF TRANSPORTATION



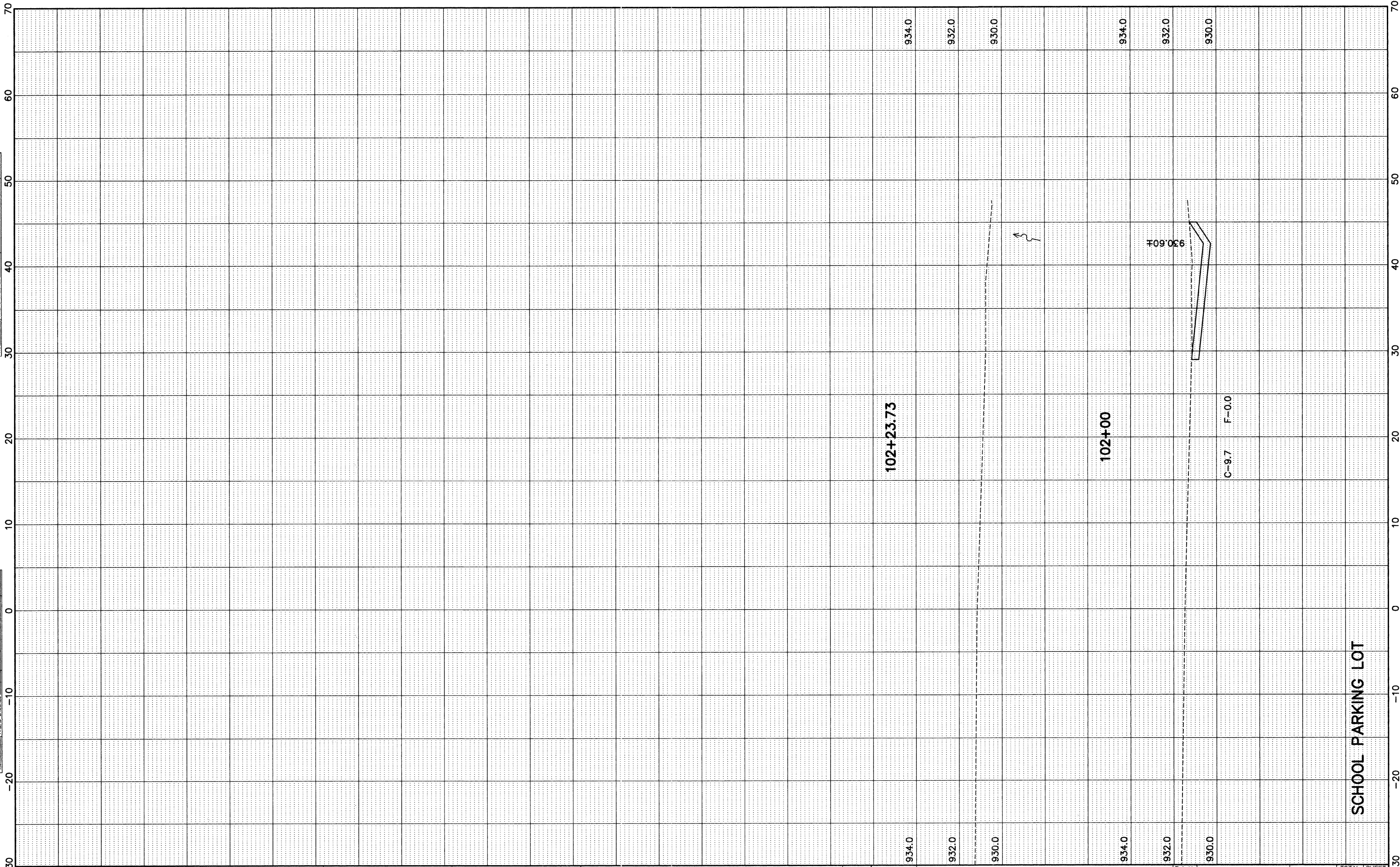
PARKING LOT
CROSS SECTIONS

SCALE: SHEET NO. OF SHEETS STA. 41+00 TO STA. 42+50

F.A.U. RTE.	SECTION	COUNTY	TOTAL SHEETS	SHEET NO.
033	10-00111-00-SW	MCHENRY	19	6
FED. ROAD DIST. NO.		ILLINOIS FED. AID PROJECT		
		CONTRACT NO. 63565		

FINAL SURVEY	BY	DATE
SURVEYED		
PLOTTED		
NOTE BOOK		
AREAS		
CHECKED		
NO.		

ORIGINAL SURVEY	BY	DATE
SURVEYED		
PLOTTED		
NOTE BOOK		
AREAS		
CHECKED		
NO.		



FILE NAME = P:\2010\100180\cod\Phase 2\dwg\100180-ah-ss-parking lot.dwg
 Apr 07, 2011 at 11:23
 Layout: Parking-2

USER NAME =	DESIGNED -- DAY	REVISED -- 9-16-10
	DRAWN -- AC	REVISED -- 2-3-11
PLOT SCALE =	CHECKED -- MAS	REVISED -- 4-6-11
PLOT DATE =	DATE -- 9-16-10	REVISED --

STATE OF ILLINOIS
 DEPARTMENT OF TRANSPORTATION



SCHOOL PARKING LOT
 CROSS SECTIONS

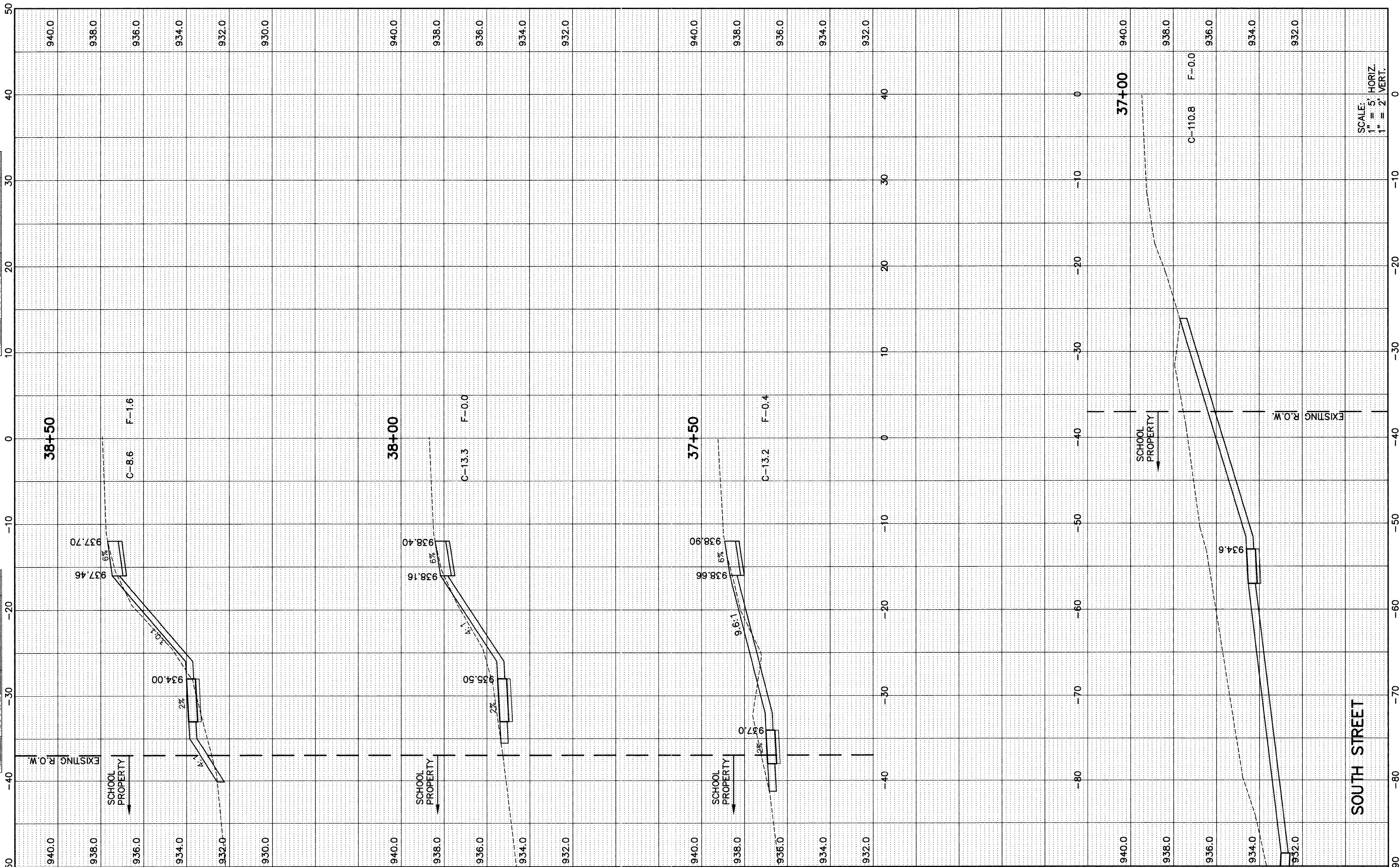
SCALE: SHEET NO. OF SHEETS STA. 41+00 TO STA. 42+50

F.A.U. RTE.	SECTION	COUNTY	TOTAL SHEETS	SHEET NO.
033	10-00111-00-SW	MCHENRY	19	7
CONTRACT NO. 63565				
FED. ROAD DIST. NO. 1 ILLINOIS FED. AID PROJECT				

SCHOOL PARKING LOT

FINAL SURVEY	BY	DATE
SURVEYED		
PLOTTED		
NOTE BOOK		
AREAS		
CHECKED		
NO.		

ORIGINAL SURVEY	BY	DATE
SURVEYED		
PLOTTED		
NOTE BOOK		
AREAS		
CHECKED		
NO.		



SCALE:
1" = 5' HORIZ.
1" = 2' VERT.

FILE NAME =	P:\2010\100180\cod\Phase 2\deg\100180-sht-xs-south #footahdr.dwg	USER NAME =	DESIGNED - DAY	REVISED - 9-16-10
PLOT SCALE =	1" = 5' HORIZ. 1" = 2' VERT.	DATE = 9-16-10	DRAWN - AC	REVISED - 2-3-11
PLOT DATE =		CHECKED - MAS	DATE - 9-16-10	REVISED - 3-11-11
		REVISOR - MAS	DATE - 9-16-10	REVISED - 4-6-11

STATE OF ILLINOIS
DEPARTMENT OF TRANSPORTATION



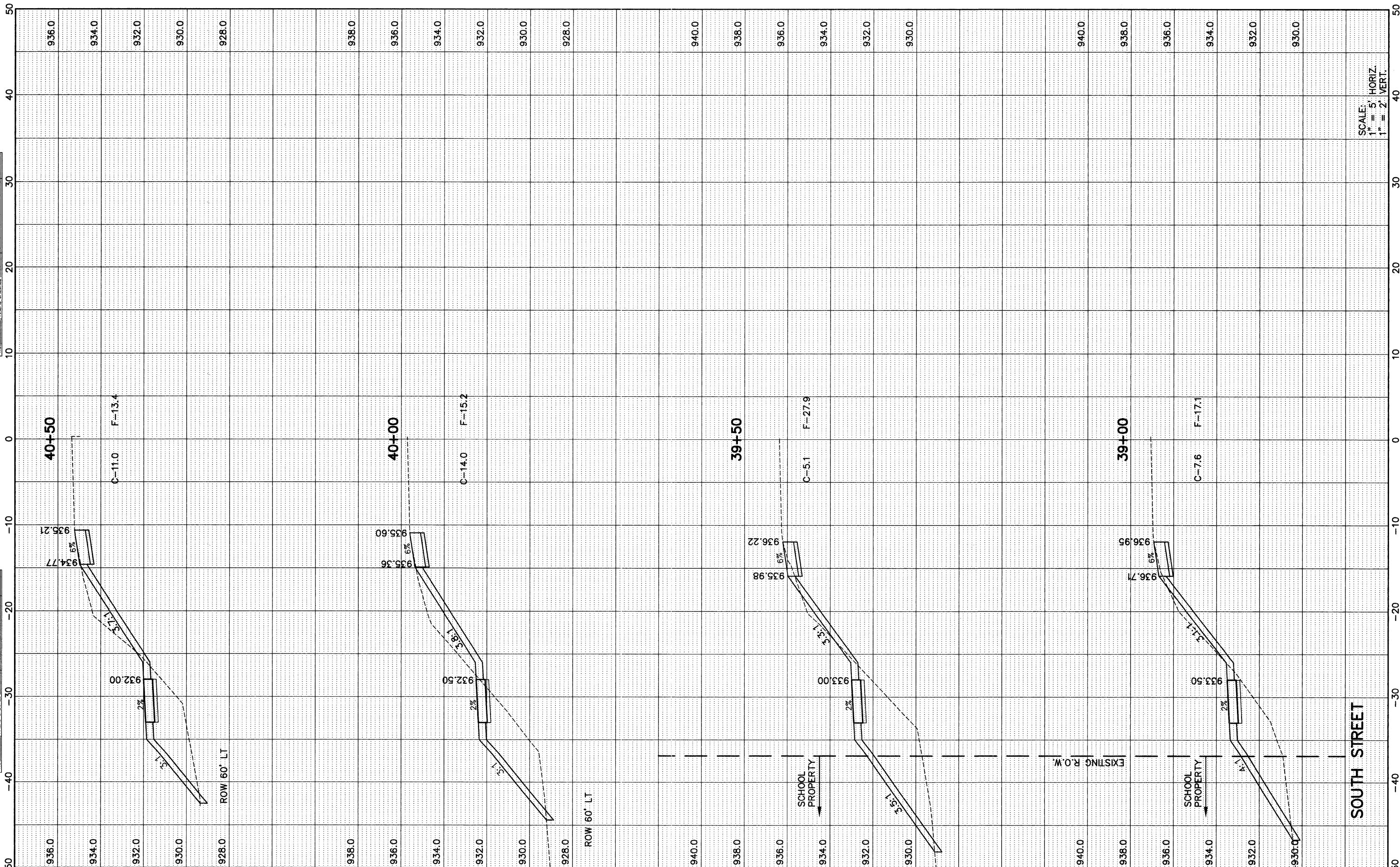
SOUTH STREET
CROSS SECTIONS

SCALE: SHEET NO. OF SHEETS STA. 37+00 TO STA. 38+50

F.A.U. RTE.	SECTION	COUNTY	TOTAL SHEETS	SHEET NO.
033	10-00111-00-SW	MCHENRY	19	8
FED. ROAD DIST. NO.		ILLINOIS FED. AID PROJECT		
		CONTRACT NO. 63565		

FINAL SURVEY	BY	DATE
SURVEYED		
PLOTTED		
NOTE BOOK		
AREAS		
AREAS CHECKED		
NO.		

ORIGINAL SURVEY	BY	DATE
SURVEYED		
PLOTTED		
NOTE BOOK		
AREAS		
AREAS CHECKED		
NO.		



SCALE:
1" = 5' HORIZ.
1" = 2' VERT.

FILE NAME = P:\2010\100180\cad\Phase 2\dwg\100180-sht-sw-south Bfootahldr.dwg Apr 07, 2011 at 11:24 Layout: South-3	USER NAME =	DESIGNED - DAY	REVISED - 9-16-10
		DRAWN - AC	REVISED - 2-3-11
		CHECKED - MAS	REVISED - 3-11-11
		DATE - 9-16-10	REVISED - 4-6-11

STATE OF ILLINOIS
DEPARTMENT OF TRANSPORTATION



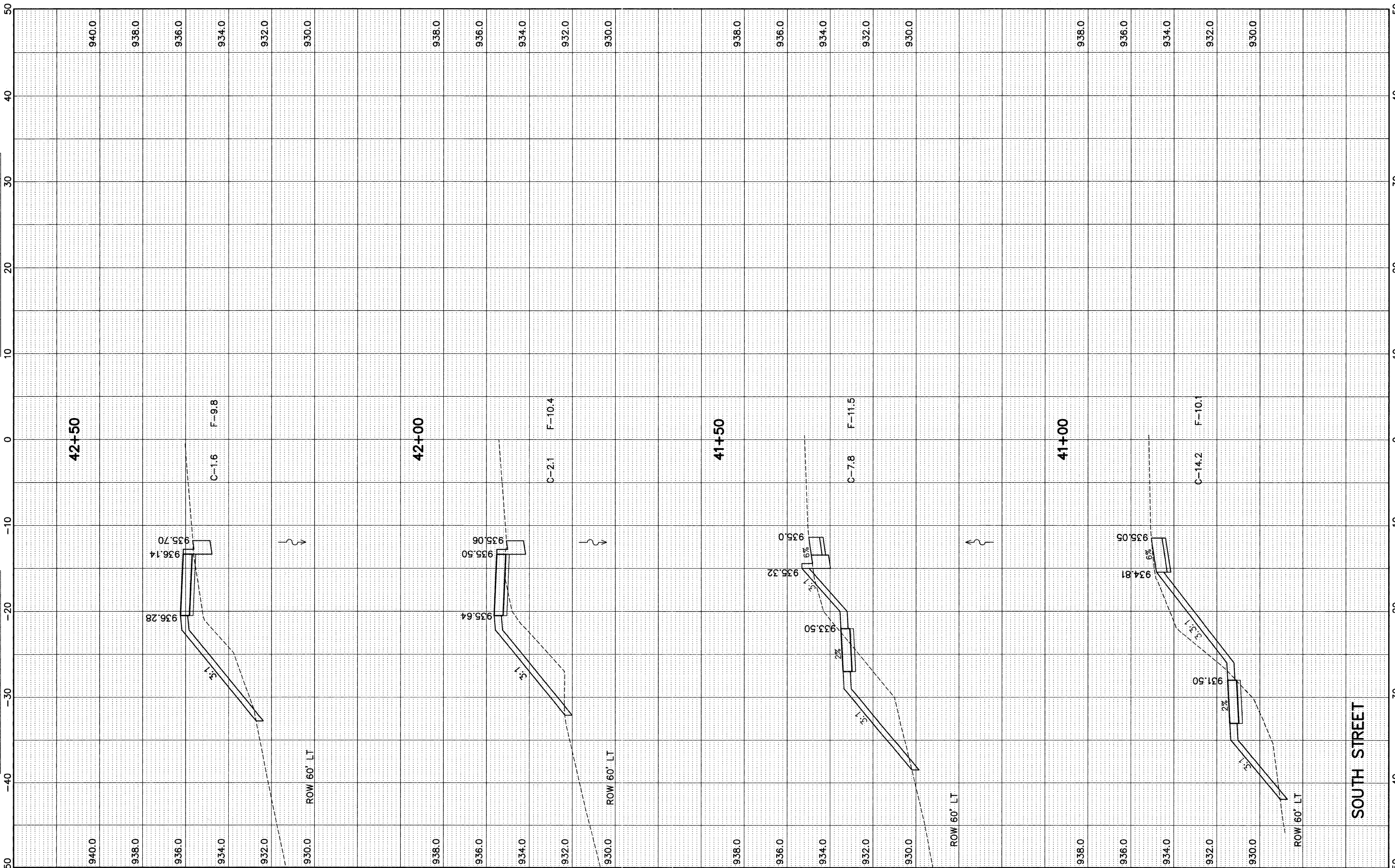
SOUTH STREET
CROSS SECTIONS

SCALE: SHEET NO. OF SHEETS STA. 39+00 TO STA. 40+50

F.A.U. RTE. 033	SECTION 10-00111-00-SW	COUNTY MCHENRY	TOTAL SHEETS 19	SHEET NO. 9
CONTRACT NO. 63565				
FED. ROAD DIST. NO. 1 ILLINOIS FED. AID PROJECT				

FINAL SURVEY	BY	DATE
NOTE BOOK		
NO.		
SURVEYED		
TEMPERATURE		
AREAS CHECKED		

ORIGINAL SURVEY	BY	DATE
NOTE BOOK		
NO.		
SURVEYED		
TEMPERATURE		
AREAS CHECKED		



FILE NAME = P:\2010\100180\cad\Phase 2\dwg\100180-sht-xs-south 8footshdr.dwg
 Mar 24, 2011 at 16:13
 Layout: South-4

USER NAME =
 DESIGNED - DAY
 DRAWN - AC
 CHECKED - MAS
 DATE - 9-16-10

REVISOR - 9-16-10
 REVISOR - 2-3-11
 REVISOR - 3-11-11
 REVISOR -

STATE OF ILLINOIS
DEPARTMENT OF TRANSPORTATION



SCALE: SHEET NO. OF SHEETS STA. 41+00 TO STA. 42+50

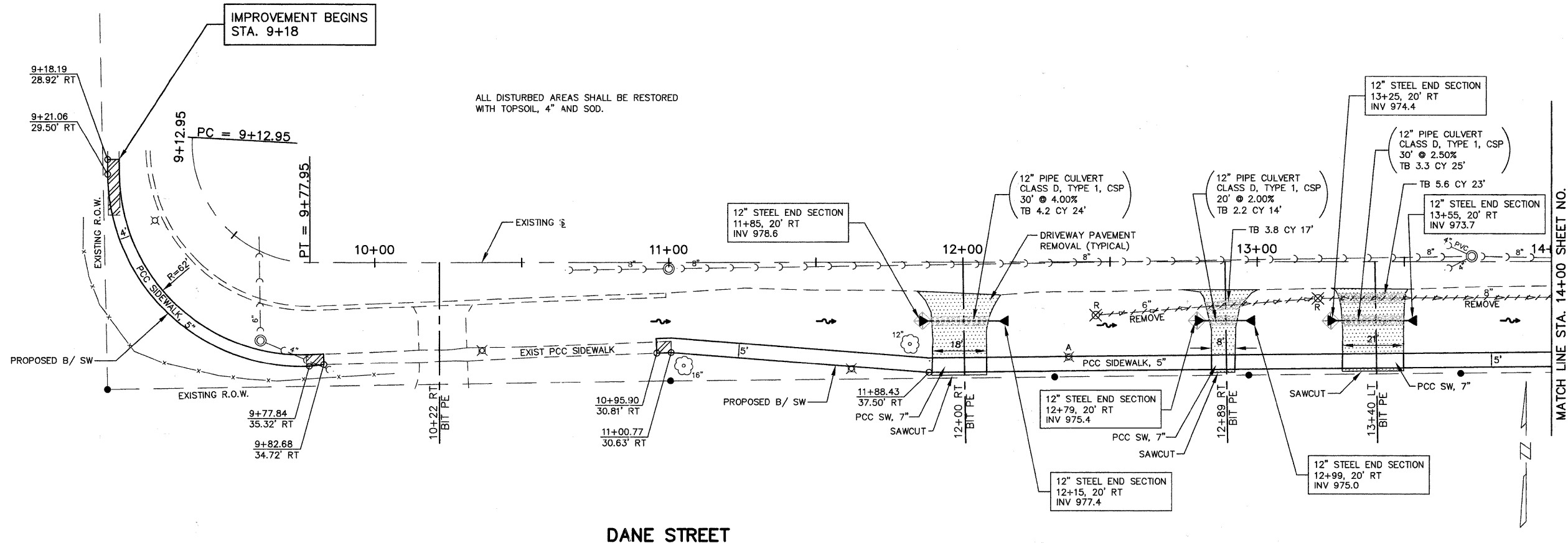
SOUTH STREET
CROSS SECTIONS

F.A.U. RTE	SECTION	COUNTY	TOTAL SHEETS	SHEET NO.
033	10-00111-00-SW	MCHENRY	19	10
CONTRACT NO. 63565				

FED. ROAD DIST. NO. 1 ILLINOIS FED. AID PROJECT

PLAN	SURVEYED	DATE
	PLOTTED	
	CHECKED	
	BY	
	NO.	
	DATE	

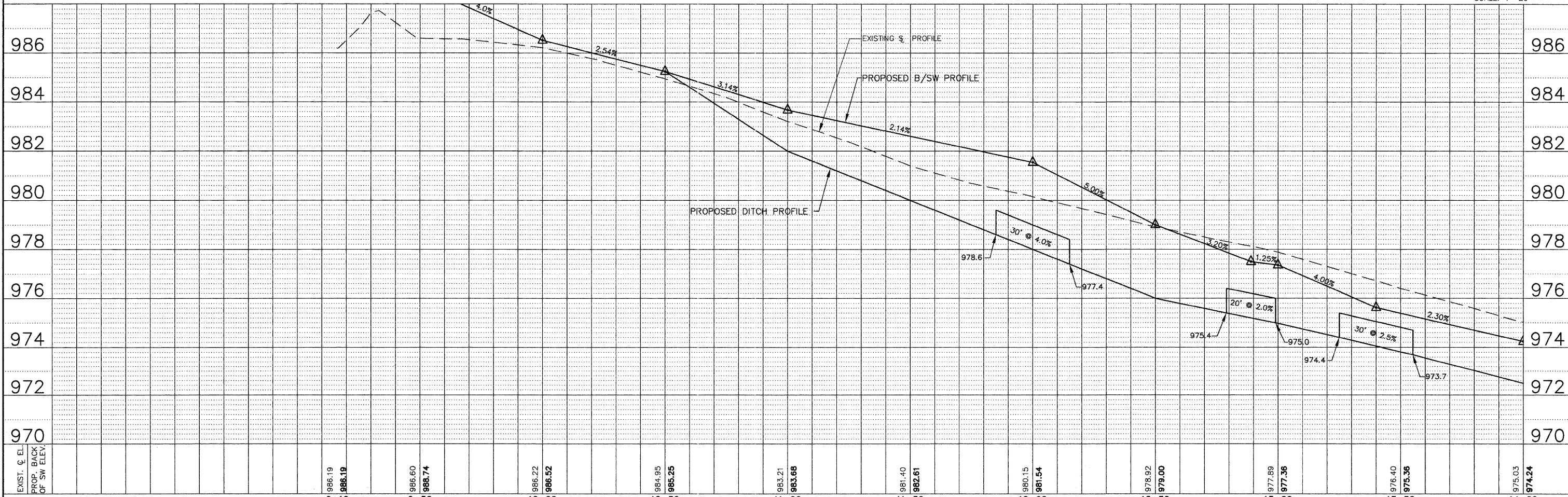
PROFILE	SURVEYED	DATE
	PLOTTED	
	CHECKED	
	BY	
	NO.	
	DATE	



BENCHMARK:
MAG NAIL IN DANE ST. 1.6' S. OF N. EDGE
OF PAVEMENT JUST SOUTH OF ASPHALT
DRIVEWAY TO RESIDENCE #682 DANE ST.
ELEVATION: 968.30

DANE STREET

SCALE: 1"=20'

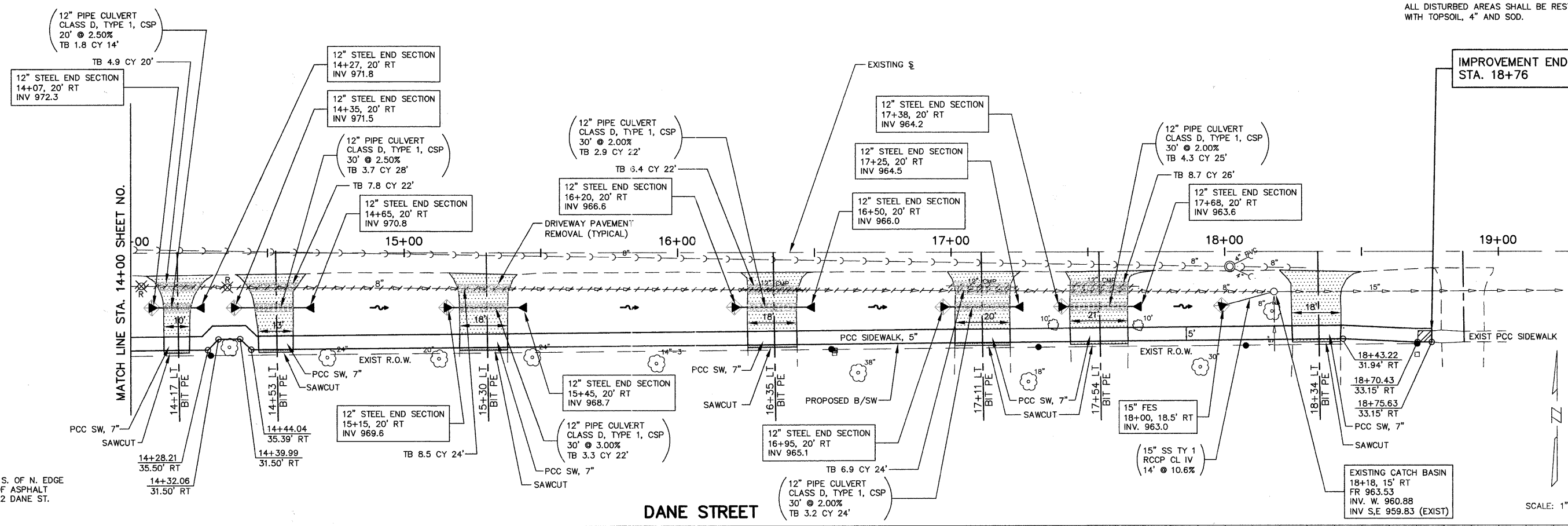


FILE NAME =	USER NAME =	DESIGNED - DAY	REVISED - 9-20-10	STATE OF ILLINOIS DEPARTMENT OF TRANSPORTATION		DANE STREET		F.A.U. RTE.	SECTION	COUNTY	TOTAL SHEETS	SHEET NO.
PLOT SCALE =	DRAWN - AC	REVISED - 2-3-11				033	10-00111-00-SW	MCHENRY	19	11		
PLOT DATE =	CHECKED - MAS	REVISED - 3-11-11				CONTRACT NO. 63565						
	DATE - 9-20-10	REVISED -				ILLINOIS FED. AID PROJECT						

ALL DISTURBED AREAS SHALL BE RESTORED WITH TOPSOIL, 4" AND SOD.

DATE	
BY	
PLAN	
DATE	
BY	
REVISIONS	
NO.	
DESCRIPTION	

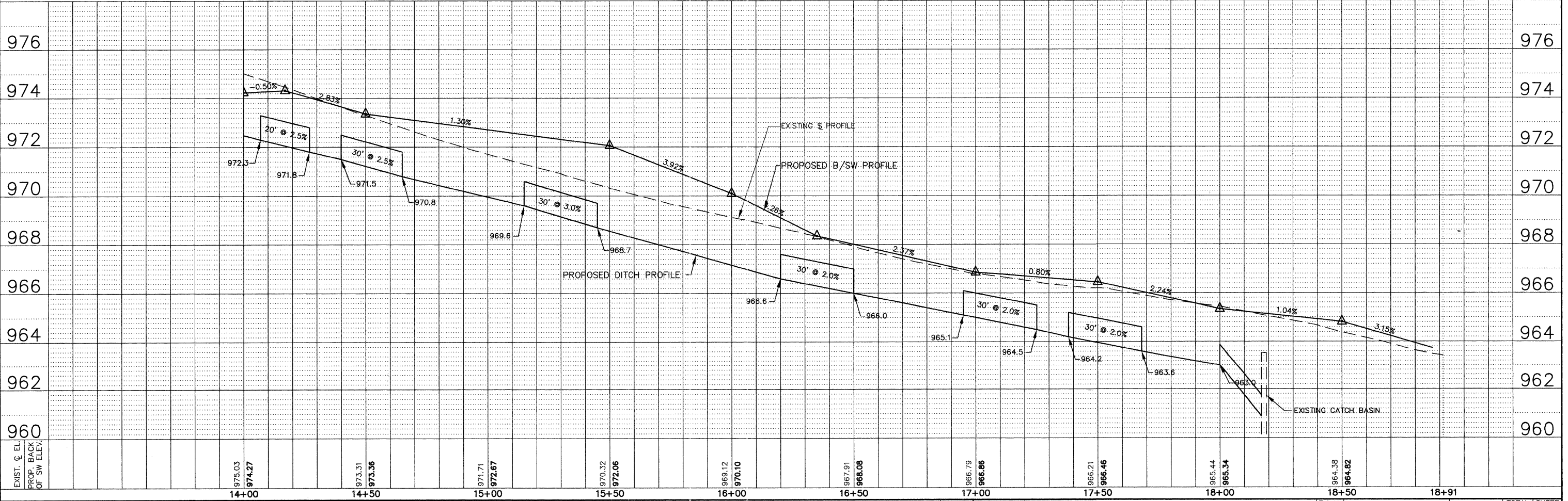
DATE	
BY	
PROFILE	
DATE	
BY	
REVISIONS	
NO.	
DESCRIPTION	



BENCHMARK:
MAG NAIL IN DANE ST. 1.6' S. OF N. EDGE
OF PAVEMENT JUST SOUTH OF ASPHALT
DRIVEWAY TO RESIDENCE #682 DANE ST.
ELEVATION: 968.30

DANE STREET

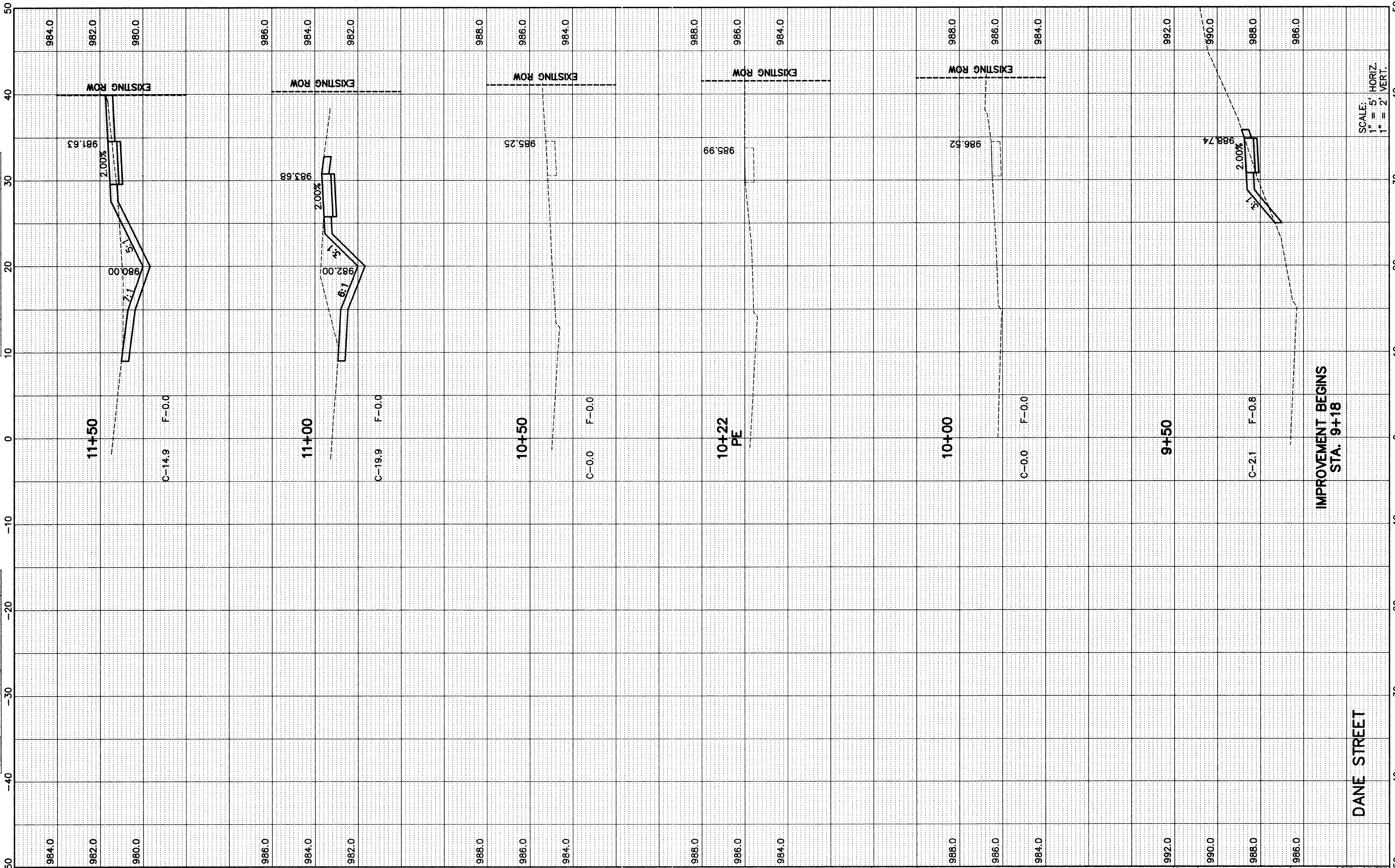
SCALE: 1"=20'



FILE NAME =	USER NAME =	DESIGNED -- DAY	REVISED -- 9-20-10	STATE OF ILLINOIS DEPARTMENT OF TRANSPORTATION	HLR	DANE STREET PLAN AND PROFILE		F.A.U. R.T.E. =	SECTION	COUNTY	TOTAL SHEETS	SHEET NO.
PLOT SCALE =	CHECKED -- MAS	REVISED -- 2-3-11	033			10-00111-00-SW	MCHENRY	19	12			
PLOT DATE =	DATE -- 9-20-10	REVISED -- 3-11-11	SCALE: 1" = 20'			SHEET NO. OF SHEETS		CONTRACT NO. 63565				
			STA. 14+00 TO STA. 18+75.63			FED. ROAD DIST. NO. ILLINOIS FED. AID PROJECT						

FINAL SURVEY	BY	DATE
NOTE BOOK		
NO.		
SURVEYED		
PLotted		
AREAS		
CHECKED		

ORIGINAL SURVEY	BY	DATE
NOTE BOOK		
NO.		
SURVEYED		
PLotted		
AREAS		
CHECKED		



SCALE:
1" = 5' HORIZ.
1" = 2' VERT.

FILE NAME = P:\2010\100180\cod\Phase 2\dwg\100180-ah1-xs-dane.dwg
Feb 07, 2011 at 9:24
Layout: Dane-1, Login Name: addelec

USER NAME =	DESIGNED - DAY	REVISED - 9-20-10
	DRAWN - AC	REVISED - 2-3-11
PLOT SCALE =	CHECKED - MAS	REVISED -
PLOT DATE =	DATE - 9-20-10	REVISED -

STATE OF ILLINOIS
DEPARTMENT OF TRANSPORTATION



DANE STREET
CROSS SECTIONS
SCALE: SHEET NO. OF SHEETS STA. 9+50 TO STA. 11+50

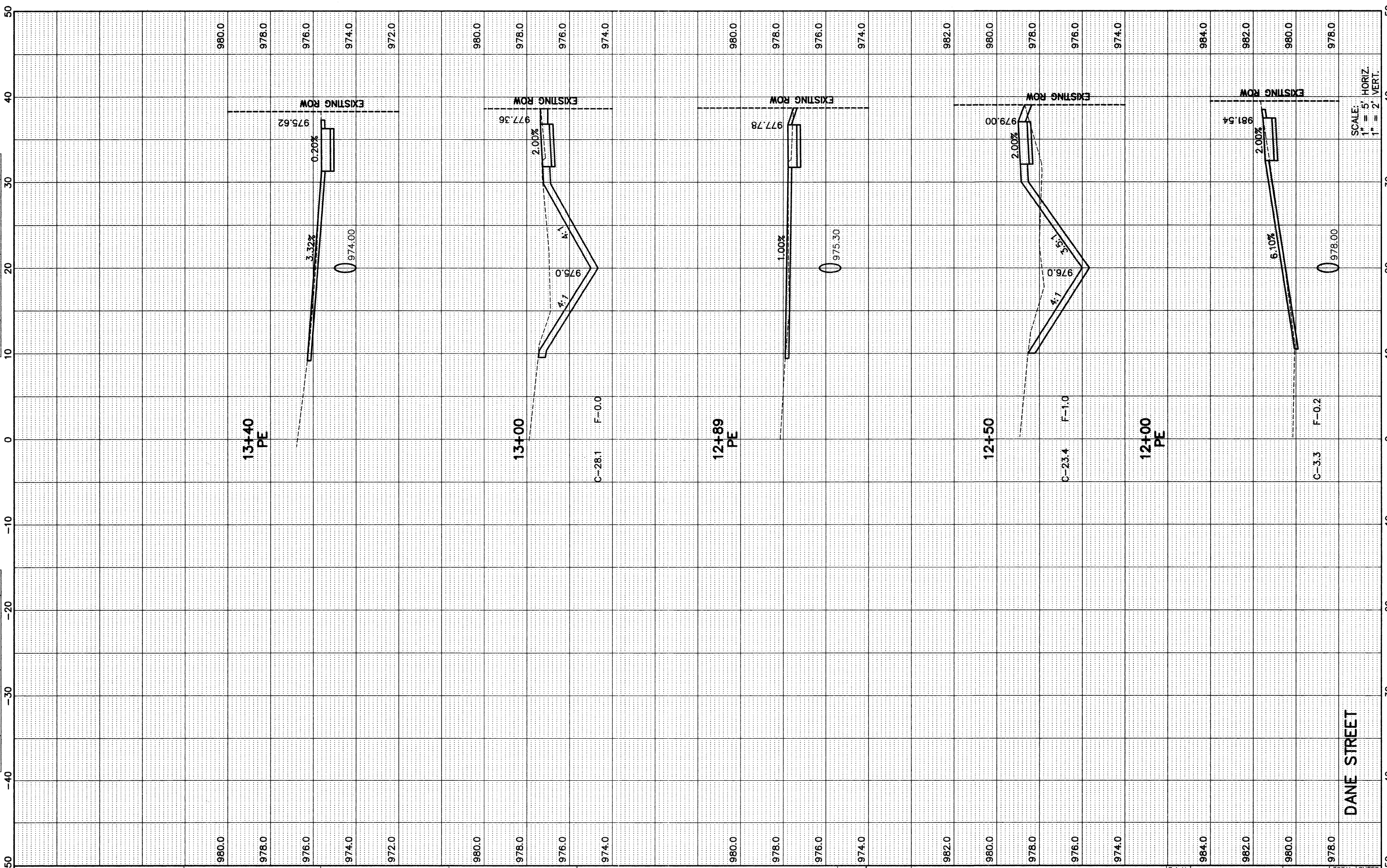
F.A.U. RTE.	SECTION	COUNTY	TOTAL SHEETS	SHEET NO.
033	10-00111-00-SW	MCHENRY	19	13
FED. ROAD DIST. NO.		ILLINOIS FED. AID PROJECT		
		CONTRACT NO. 63565		

DANE STREET

IMPROVEMENT BEGINS
STA. 9+18

FINAL SURVEY	DATE
SURVEYED	BY
NOTE BOOK	NO.
AREAS CHECKED	AREAS CHECKED

ORIGINAL SURVEY	DATE
SURVEYED	BY
NOTE BOOK	NO.
AREAS CHECKED	AREAS CHECKED



DANE STREET

SCALE: 1" = 5' HORIZ.
1" = 2' VERT.

FILE NAME = P:\2010\100180\cad\Phase 2\dwg\100180-sht-xs-dane.dwg
 Feb 07, 2011 at 10:45
 Layout: Dane-2, Login Name: adelac

USER NAME =	DESIGNED - DAY	REVISED - 9-20-10
	DRAWN - AC	REVISED - 2-3-11
PLOT SCALE =	CHECKED - MAS	REVISED -
PLOT DATE =	DATE - 9-20-10	REVISED -

**STATE OF ILLINOIS
DEPARTMENT OF TRANSPORTATION**



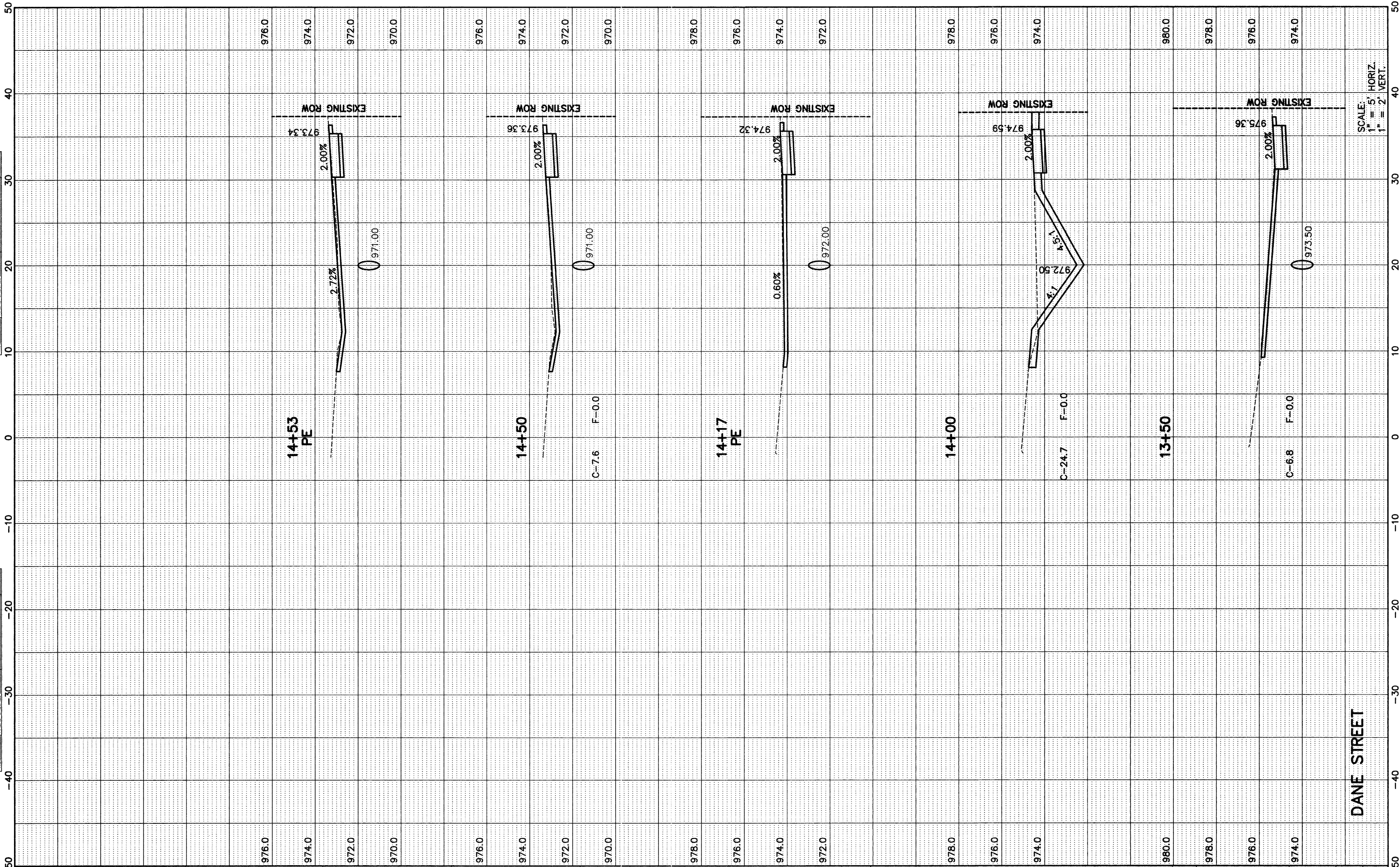
**DANE STREET
CROSS SECTIONS**

SCALE: SHEET NO. OF SHEETS STA. 12+00 TO STA. 13+40

F.A.U. RTE.	SECTION	COUNTY	TOTAL SHEETS	SHEET NO.
033	10-00111-00-SW	MCHENRY	19	14
CONTRACT NO. 63565			ILLINOIS FED. AID PROJECT	

FINAL SURVEY	BY	DATE
PLOTTED		
NOTE BOOK		
AREAS		
AREAS CHECKED		
NO.		

ORIGINAL SURVEY	BY	DATE
PLOTTED		
NOTE BOOK		
AREAS		
AREAS CHECKED		
NO.		



DANE STREET

SCALE: 1" = 5' HORIZ.
1" = 2' VERT.

FILE NAME = P:\2010\100180\cod\Phase 2\dwg\100180-sht-xs-dane.dwg Feb 07, 2011 at 10:56 Layout: Dane-3, Login Name: adela	USER NAME =	DESIGNED - DAY	REVISED - 9-20-10
		DRAWN - AC	REVISED - 2-3-11
		CHECKED - MAS	REVISED -
		DATE - 9-20-10	REVISED -

STATE OF ILLINOIS
DEPARTMENT OF TRANSPORTATION

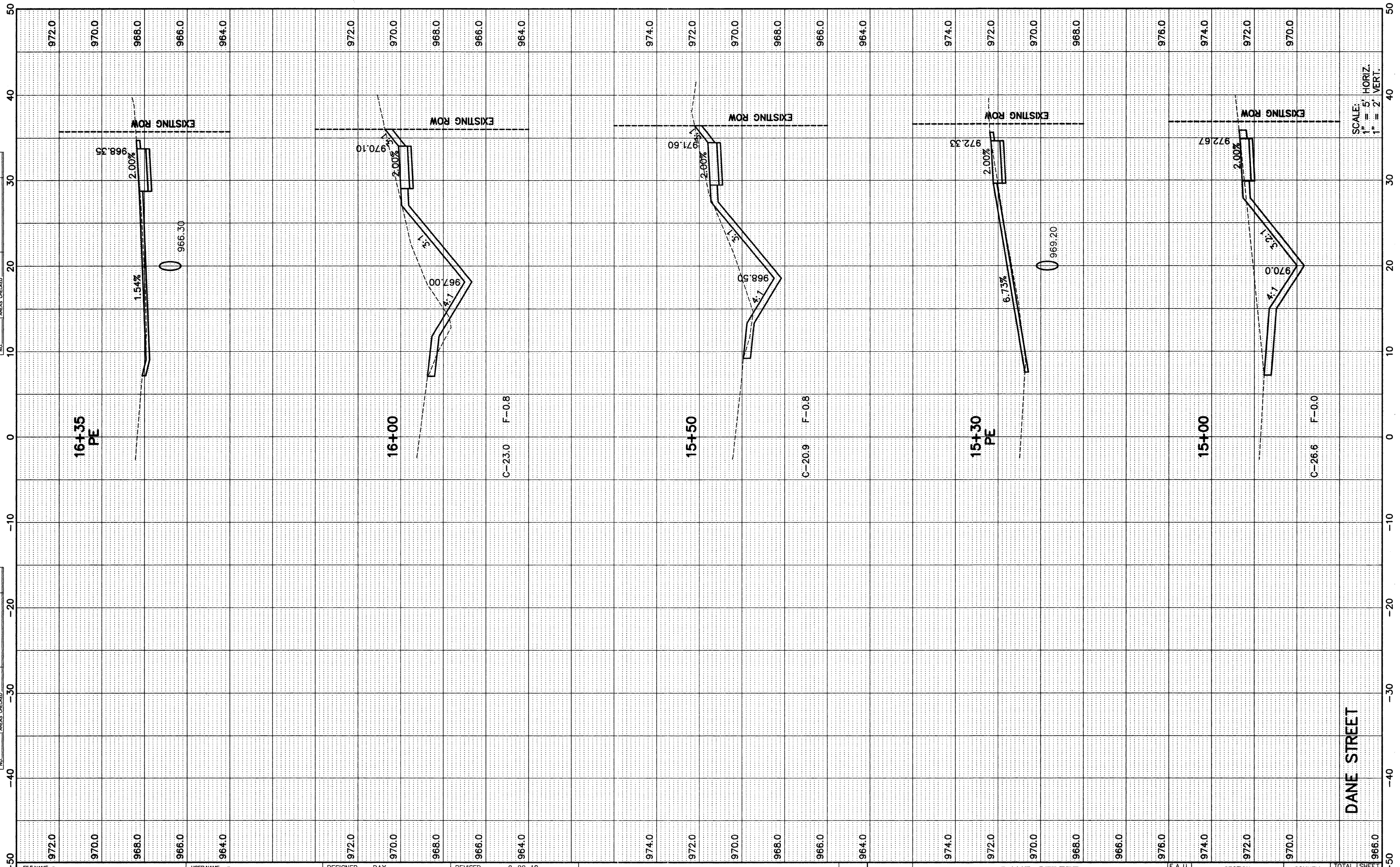


DANE STREET CROSS SECTIONS	
SCALE:	SHEET NO. OF SHEETS STA. 13+50 TO STA. 14+53

F.A.U. RTE. 033	SECTION 10-00111-00-SW	COUNTY MCHENRY	TOTAL SHEETS 19	SHEET NO. 15
FED. ROAD DIST. NO.		ILLINOIS FED. AID PROJECT		
CONTRACT NO. 63565				

FINAL SURVEY	SURVEYED	DATE
NOTE BOOK	PLOTTED	
NO.	TEMPLATE	
	AREAS CHECKED	

ORIGINAL SURVEY	SURVEYED	DATE
NOTE BOOK	PLOTTED	
NO.	TEMPLATE	
	AREAS CHECKED	



DANE STREET

SCALE:
1" = 5' HORIZ.
1" = 2' VERT.

FILE NAME = P:\2010\100180\cad\Phase 2\dwg\100180-sht-xs-dane.dwg	USER NAME =	DESIGNED - DAY	REVISED - 9-20-10
Feb 07, 2011 at 10:56		DRAWN - AC	REVISED - 2-3-11
Layout: Dane-4, Login Name: adelac	PLOT SCALE =	CHECKED - MAS	REVISED -
	PLOT DATE =	DATE - 9-20-10	REVISED -

**STATE OF ILLINOIS
DEPARTMENT OF TRANSPORTATION**



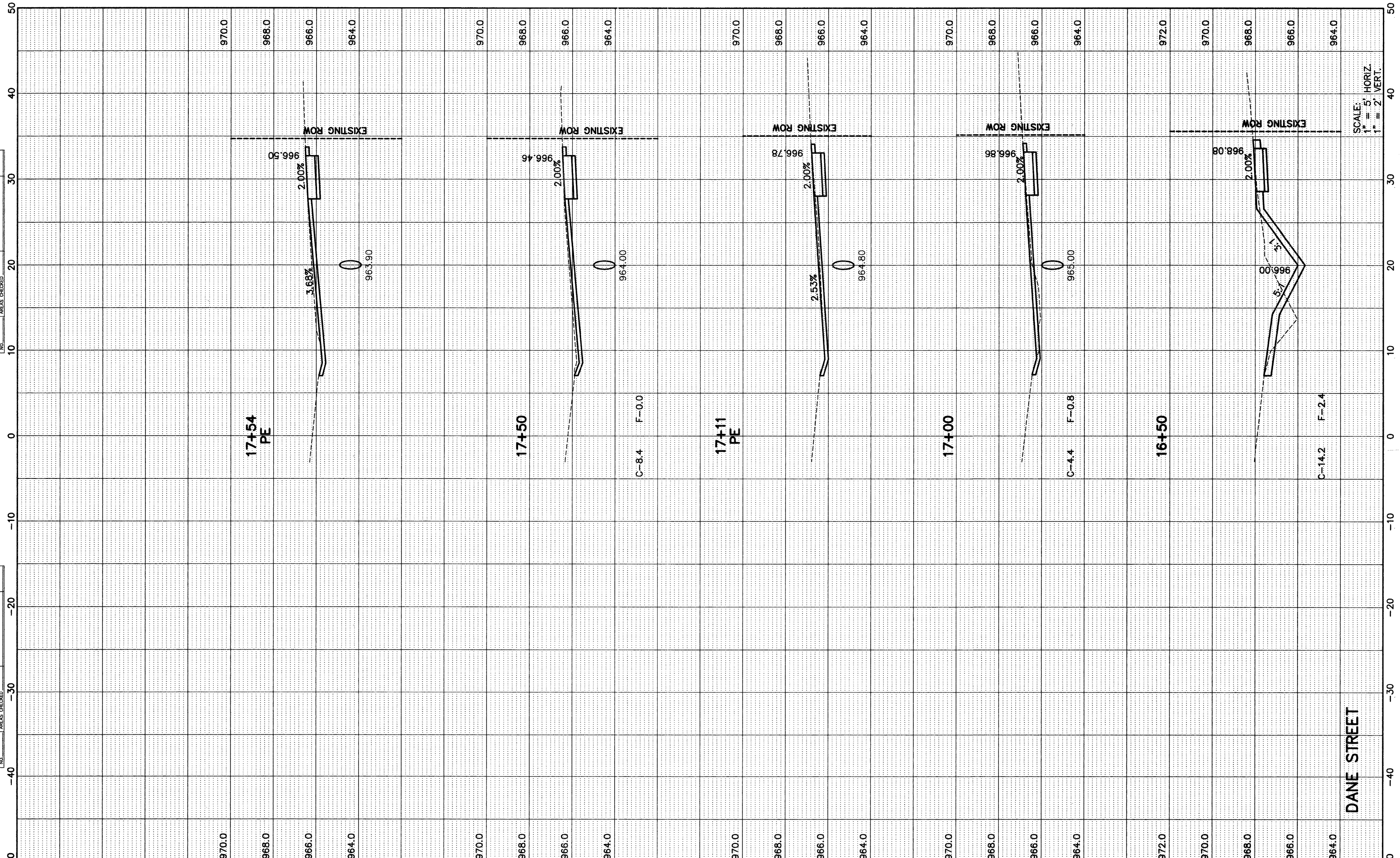
**DANE STREET
CROSS SECTIONS**

F.A.U. RTE. 033	SECTION 10-00111-00-SW	COUNTY MCHENRY	TOTAL SHEETS 19	SHEET NO. 16
CONTRACT NO. 63565		ILLINOIS FED. AID PROJECT		

SCALE: SHEET NO. OF SHEETS STA. 15+00 TO STA. 16+35

ORIGINAL SURVEY NO.	DATE
SURVEYED	
PLOTTED	
TEMPLATE	
NOTE BOOK	
MEAS. CHECKED	

ORIGINAL SURVEY NO.	DATE
SURVEYED	
PLOTTED	
TEMPLATE	
NOTE BOOK	
MEAS. CHECKED	



SCALE:
1" = 5' HORIZ.
1" = 2' VERT.

FILE NAME =	P:\2010\100180\cad\Phase 2\dwg\100180-sht-xs-done.dwg	USER NAME =	DESIGNED - DAY	REVISED - 9-20-10
	Feb 07, 2011 at 10:56		DRAWN - AC	REVISED - 2-3-11
	Layout: DANE-5, Login Name: odeloc		CHECKED - MAS	REVISED -
			DATE - 9-20-10	REVISED -

STATE OF ILLINOIS
DEPARTMENT OF TRANSPORTATION



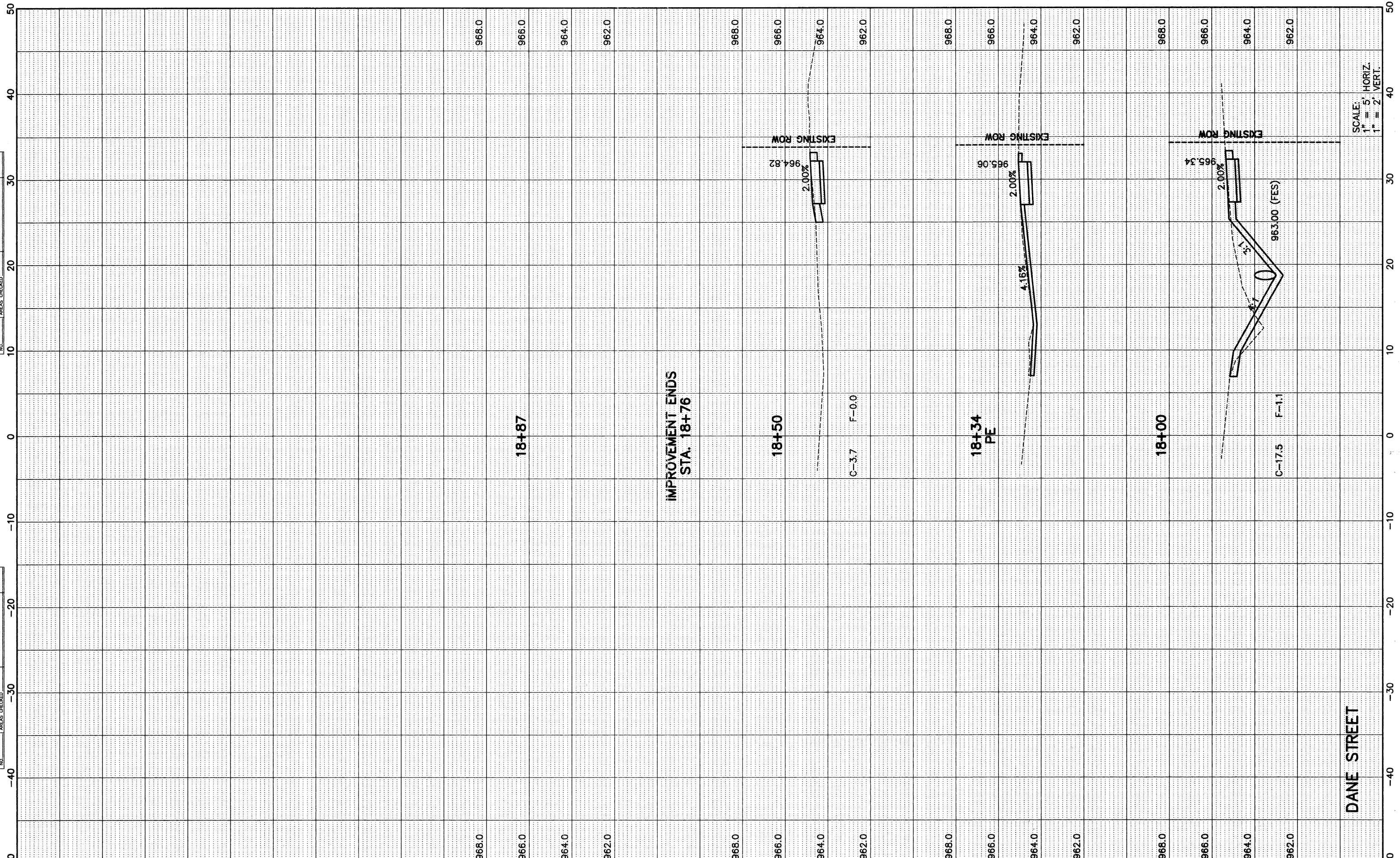
DANE STREET
CROSS SECTIONS

F.A.U. RTE.	SECTION	COUNTY	TOTAL SHEETS	SHEET NO.
033	10-00111-00-SW	MCHENRY	19	17
FED. ROAD DIST. NO.		ILLINOIS FED. AID PROJECT		
		CONTRACT NO. 63565		

SCALE: SHEET NO. OF SHEETS STA. 16+50 TO STA. 17+54

FINAL SURVEY	SURVEYED	BY	DATE
NOTE BOOK	PLOTTED		
NO.	TEMPLATE		
	AREAS CHECKED		

ORIGINAL SURVEY	SURVEYED	BY	DATE
NOTE BOOK	PLOTTED		
NO.	TEMPLATE		
	AREAS CHECKED		



SCALE:
1" = 5' HORIZ.
1" = 2' VERT.

FILE NAME = P:\2010\100180\cad\Phase 2\dwg\100180-sht-xs-dane.dwg	USER NAME =	DESIGNED - DAY	REVISED - 9-20-10
Feb 07, 2011 at 10:49		DRAWN - AC	REVISED - 2-3-11
Layout: Dane-6, Login Name: adelac	PLOT SCALE =	CHECKED - MAS	REVISED -
	PLOT DATE =	DATE - 9-20-10	REVISED -

STATE OF ILLINOIS
DEPARTMENT OF TRANSPORTATION



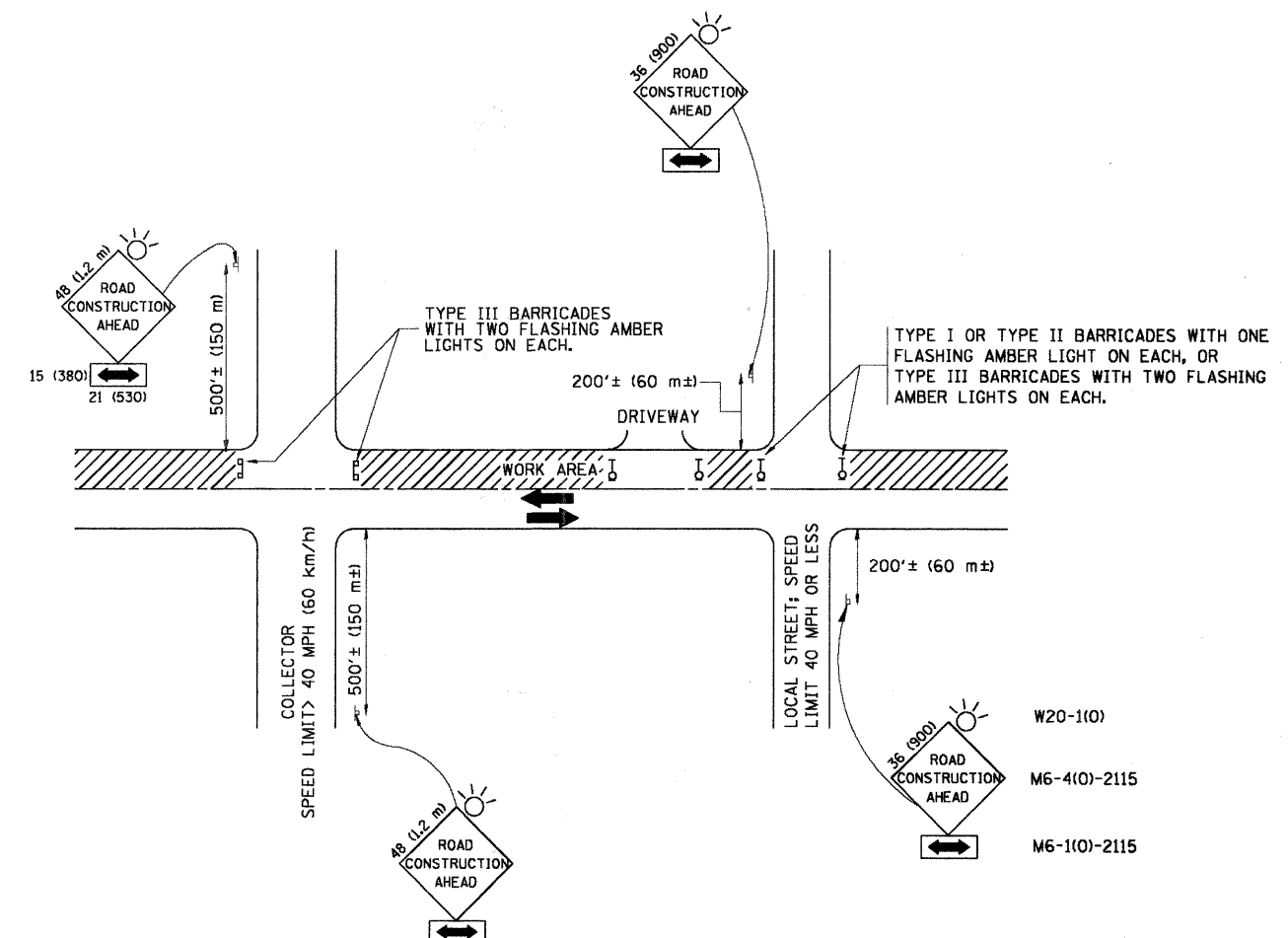
DANE STREET
CROSS SECTIONS

F.A.U. RTE. 033	SECTION 10-00111-00-SW	COUNTY MCHENRY	TOTAL SHEETS 19	SHEET NO. 18
FED. ROAD DIST. NO.		ILLINOIS FED. AID PROJECT		

SCALE: SHEET NO. OF SHEETS STA. 18+00 TO STA. 18+87

DANE STREET

CONTRACT NO. 63565



TRAFFIC CONTROL AND PROTECTION FOR SIDE ROADS, INTERSECTIONS, AND DRIVEWAYS

NOTES:

- A. FOR NO LANE RESTRICTION ON THE SIDE ROAD OR DRIVEWAYS
 1. SIDE ROAD WITH A SPEED LIMIT OF 40 MPH (60 km/h) OR LESS AS SHOWN ON THE DRAWING AND AS DIRECTED BY THE ENGINEER:
 - a) ONE ROAD CONSTRUCTION AHEAD SIGN 36 x 36 (900x900) WITH A FLASHER AND FLAG MOUNTED ON IT APPROXIMATELY 200' (60 m) IN ADVANCE OF THE MAIN ROUTE.
 - b) THE CLOSED PORTION OF THE MAIN ROUTE SHALL BE PROTECTED BY BLOCKING WITH TYPE I, TYPE II OR TYPE III BARRICADES, 1/3 OF THE CROSS SECTION OF THE CLOSED PORTION.
 2. SIDE ROAD WITH A SPEED LIMIT GREATER THAN 40 MPH (60 km/h) AS SHOWN ON THE DRAWING AND AS DIRECTED BY THE ENGINEER:
 - a) ONE ROAD CONSTRUCTION AHEAD SIGN 48 x 48 (1.2 m x 1.2 m) WITH A FLASHER MOUNTED ON IT APPROXIMATELY 500' (150 m) IN ADVANCE OF THE MAIN ROUTE.
 - b) THE CLOSED PORTION OF THE MAIN ROUTE SHALL BE PROTECTED BY BLOCKING WITH TYPE III BARRICADES, 1/2 OF THE CROSS SECTION OF THE CLOSED PORTION.
 3. WHEN THE SIDE ROAD LIES BETWEEN THE BEGINNING OF THE MAINLINE SIGNING AND THE WORK ZONE, A SINGLE HEADED ARROW (M6-1) SHALL BE USED IN LIEU OF THE DOUBLE HEADED ARROW (M6-4).
- B. FOR A LANE CLOSURE ON A SIDE ROAD OR DRIVEWAY:

USE APPLICABLE PORTIONS OF THE TYPICAL APPLICATION OF TRAFFIC CONTROL DEVICES (STD. 701501, STD. 701606 OR THE APPROPRIATE STANDARD). THE SPACING OF SIGNS AND BARRICADES SHALL BE ADJUSTED FOR FIELD CONDITIONS AS DIRECTED BY THE ENGINEER. THE DIRECTIONAL ARROW SHALL BE COVERED OR REMOVED WHEN NO LONGER CONSISTENT WITH THE SIDE ROAD LANE CLOSURE.
- C. ADVANCE WARNING SIGNS ARE TO BE OMITTED ON DRIVEWAY UNLESS OTHERWISE NOTED.
- D. THE TRAFFIC CONTROL AND PROTECTION FOR SIDE ROADS, INTERSECTIONS, AND DRIVEWAYS SHALL BE INCIDENTAL TO THE COST OF SPECIFIED TRAFFIC CONTROL STANDARDS OR ITEMS.

All dimensions are in millimeters (inches) unless otherwise shown.

FILE NAME = W:\distatd\22x34\to10.dgn	USER NAME = geglanoht	DESIGNED - LHA	REVISED - J. OBERLE 10-18-95	STATE OF ILLINOIS DEPARTMENT OF TRANSPORTATION	TRAFFIC CONTROL AND PROTECTION FOR SIDE ROADS, INTERSECTIONS, AND DRIVEWAYS			F.A.U. RTE.	SECTION	COUNTY	TOTAL SHEETS	SHEET NO.
		DRAWN -	REVISED - A. HOUSEH 03-06-96		033	10-00111-00-SW	McHENRY	19	19			
		PLOT SCALE = 50.000' / IN.	CHECKED -		REVISED - A. HOUSEH 10-15-96	TC-10			CONTRACT NO. 63565			
		PLOT DATE = 1/4/2008	DATE - 06-89		REVISED - T. RAMMACHER 01-06-00	SCALE: NONE	SHEET NO. 1 OF 1 SHEETS	STA. TO STA.	FED. ROAD DIST. NO. 1 ILLINOIS FED. AID PROJECT			