

STATE OF ILLINOIS  
DEPARTMENT OF TRANSPORTATION  
DIVISION OF HIGHWAYS

# PLANS FOR PROPOSED FEDERAL AID HIGHWAY

F. A. I. I. NO.	SECTION	COUNTY	TOTAL SHEETS	SHEET NO.
2404	11-00026-00-RS	COOK	10	1
STA.		TO STA.		
FED. ROAD DIST. NO.		ILLINOIS	FED. AID PROJECT M-9003(775)	

CONTRACT #63574

**INDEX OF SHEETS**

1. COVER SHEET, INDEX OF SHEETS & STATE STANDARDS
2. SUMMARY OF QUANTITIES & GENERAL NOTES
3. TYPICAL CROSS SECTIONS
4. PAVEMENT PLAN
5. STRIPING PLAN
- 6.-10. IDOT DISTRICT 1 STANDARD DETAILS

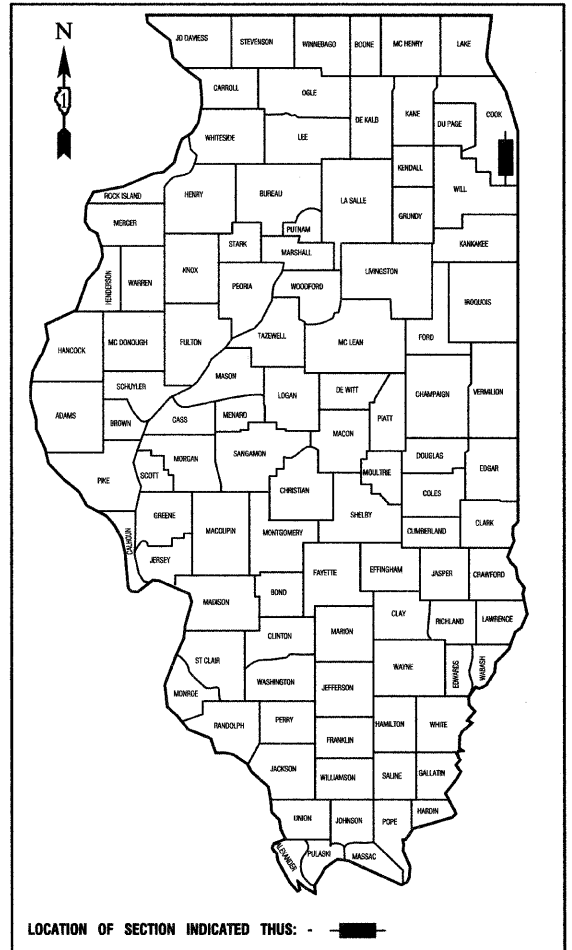
**HIGHWAY STANDARDS**

- |           |  |
|-----------|--|
| 000001-06 | STANDARD SYMBOLS, ABBREVIATIONS AND PATTERNS                   |
| 424001-05 | CURB RAMPS FOR SIDEWALKS                                       |
| 442201-03 | CLASS C AND D PATCHES  |
| 606001-04 | CONCRETE CURB TYPE B AND COMBINATION CONCRETE CURB AND GUTTER  |
| 701501-06 | URBAN LANE CLOSURE, 2L, 2W, UNDIVIDED                          |
| 701801-04 | LANE CLOSURE, MULTILANE 1W OR 2W CROSSWALK OR SIDEWALK CLOSURE |
| 701901-01 | TRAFFIC CONTROL DEVICES  |
| 780001-02 | TYPICAL PAVEMENT MARKINGS                                      |

**FAU-2404 (KOSTNER AVENUE)  
147TH STREET TO 143RD STREET  
RESURFACING  
SECTION NO.: 11-00026-00-RS  
PROJECT NO.: M-9003(775)  
VILLAGE of MIDLOTHIAN  
COOK COUNTY  
JOB NO. C-91-365-11**

RANGE 13 E 3RD PM

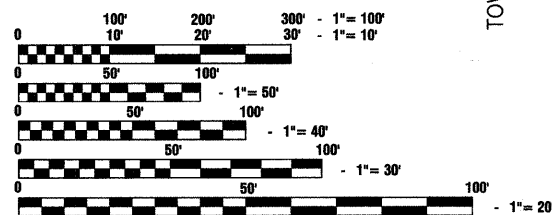
PROJECT LOCATED  
IN VILLAGE OF  
MIDLOTHIAN



**KOSTNER AVENUE**  
ADT=2,800 (2009)  
=2,900 (2030)  
DESIGN SPEED=25 MPH  
POSTED SPEED LIMIT=20 MPH  
DESIGN DESIGNATION=URBAN COLLECTOR

**SCALES**

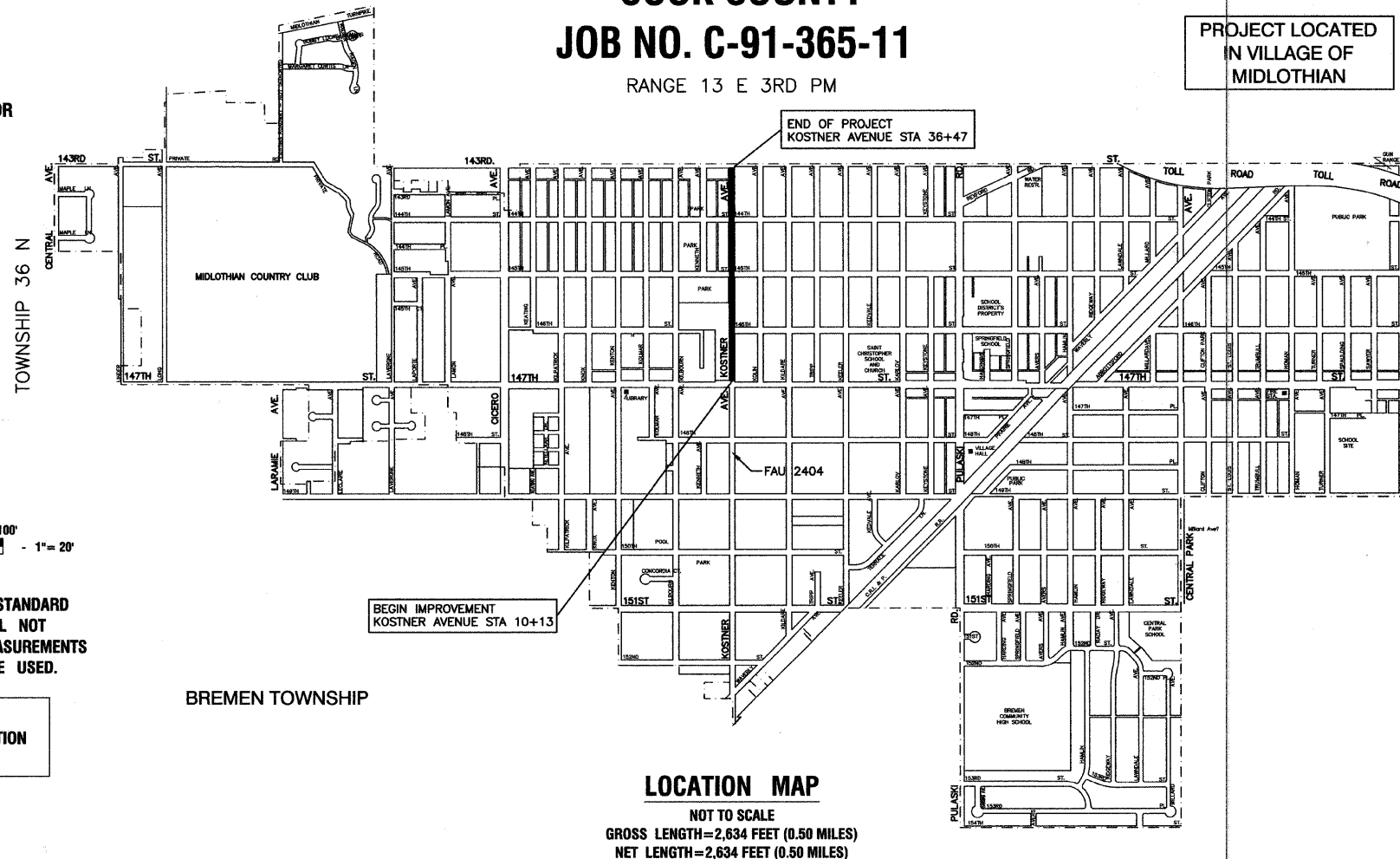
PLAN -	1"=50'
PROFILE HORIZ. -	1"=50'
PROFILE VERT. -	1"=5'
CROSS SECTIONS -	1"=10'



FULL SIZE PLANS HAVE BEEN PREPARED USING STANDARD ENGINEERING SCALES, REDUCED SIZED PLANS WILL NOT CONFORM TO STANDARD SCALES, IN MAKING MEASUREMENTS ON REDUCED PLANS, THE ABOVE SCALES MAY BE USED.

**J. U. L. I. E.**  
JOINT UTILITY LOCATION INFORMATION FOR EXCAVATION  
1 - 800 - 892 - 0123 or 811

**CONTRACT NO. 63574**



**LOCATION MAP**

NOT TO SCALE  
GROSS LENGTH=2,634 FEET (0.50 MILES)  
NET LENGTH=2,634 FEET (0.50 MILES)

PROGRAM OFFICE ENGINEER: CHARLES F. RIDDLER P.E. 847-705-4406 SCHAUMBURG, IL  
CONSULTANTS: ROBINSON ENGINEERING, LTD. 708-331-6700

STATE OF ILLINOIS DEPARTMENT OF TRANSPORTATION  
DIVISION OF HIGHWAYS

Approved: 3/18/2011  
*Tamara M. Stephens*  
President, Village of Midlothian

Passed: APRIL 11, 2011  
*Chris Hester/Holt*  
District 1 Engineer of Local Roads & Streets

Released for Bid Based on Limited Review: APRIL 11, 2011  
*Diana M. O'Keefe*  
Deputy Director of Highways, Region 1 Engineer

PRINTED BY THE AUTHORITY OF  
THE STATE OF ILLINOIS

PREPARED BY OR UNDER THE  
DIRECT SUPERVISION OF:

*Patricia A. Barber*  
3/18/2011

