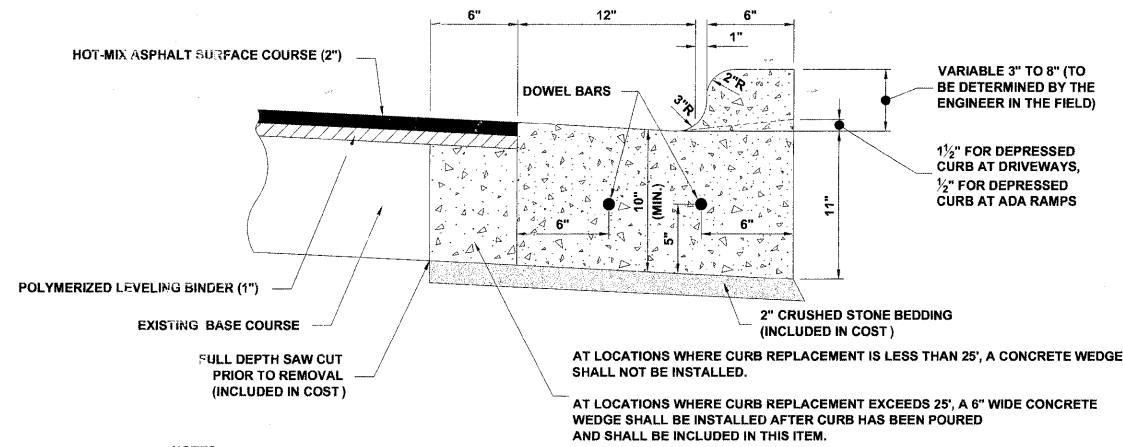


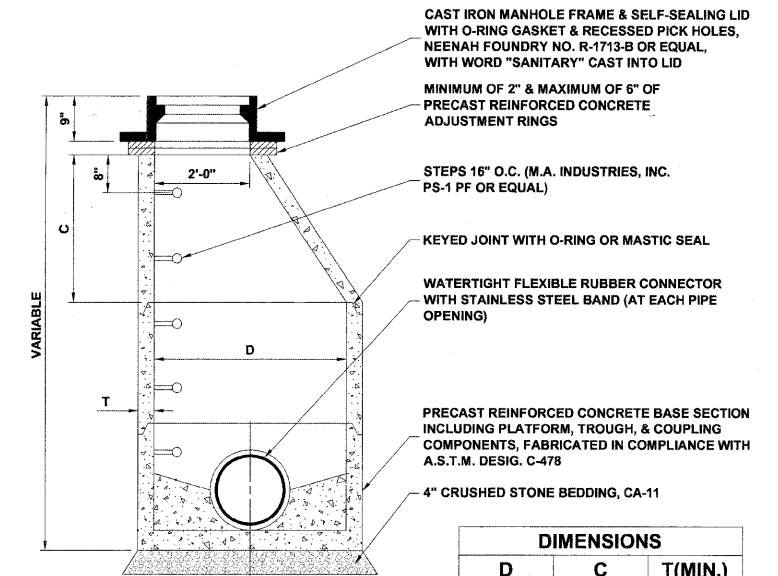
A.D.A. RAMP



NOTES:

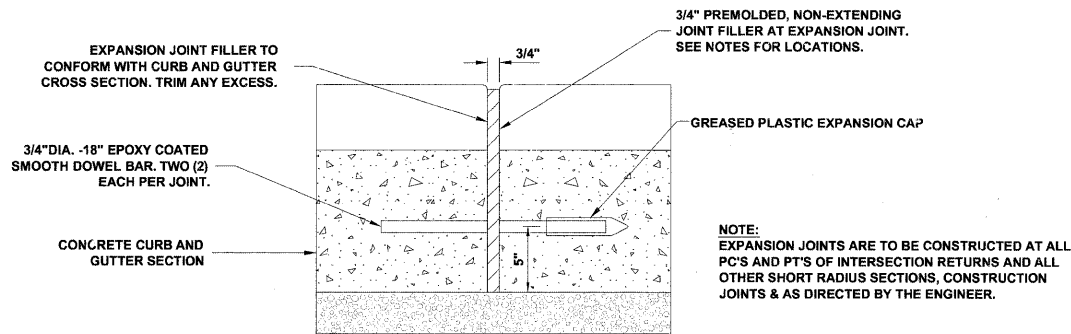
1. PROVIDE 2 - 3/4" DIAMETER, 18" LONG EPOXY COATED SMOOTH BARS WITH PLASTIC EXPANSION CAPS AT EACH EXPANSION JOINT.
2. CONTRACTION JOINT - 2" DEEP CONTRACTION JOINTS SHALL BE SAWED AT EQUAL SPACES (NOT EXCEEDING 15 FEET) BETWEEN NORMAL EXPANSION JOINTS, IN THE UPPER 1/3 OF CURB & GUTTERS WITHIN 24 HOURS OF PLACEMENT.
3. A LEAN CONCRETE WEDGE IS TO BE POURED IN THE SPACE BETWEEN THE NEW CURB & THE EXISTING PAVEMENT AFTER THE CURB HAS REACHED ITS INITIAL SET.

COMBINATION CONCRETE CURB & GUTTER

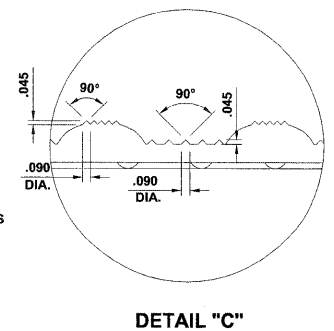
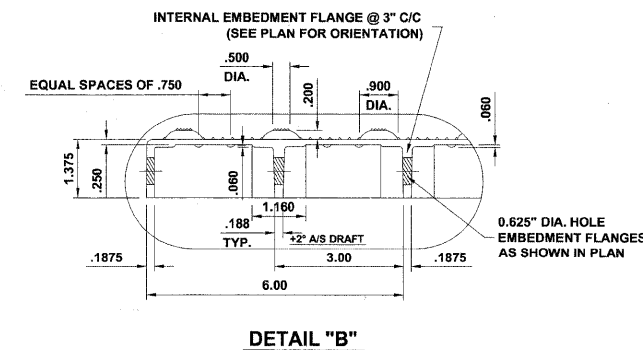
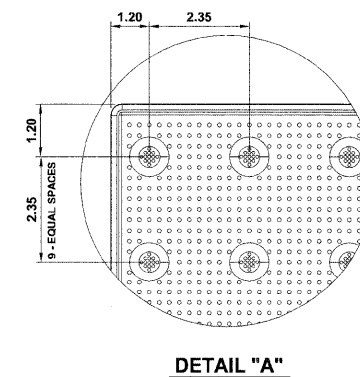
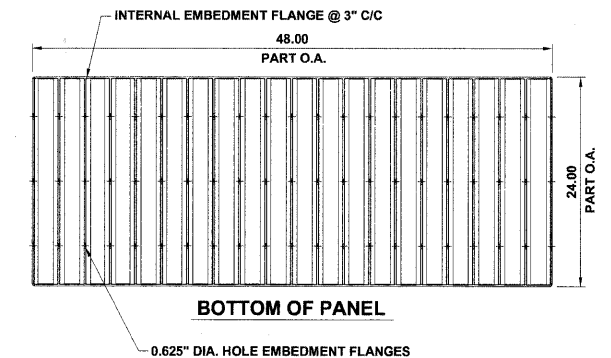
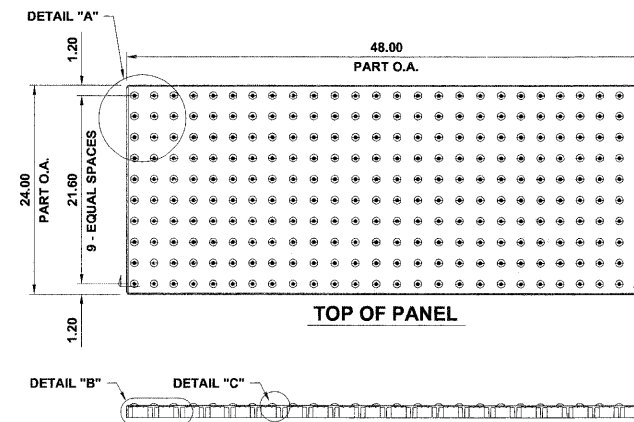


DIMENSIONS		
D	C	T(MIN.)
4'-0"	2'-6"	4"
5'-0"	3'-9"	5"

SANITARY MANHOLE

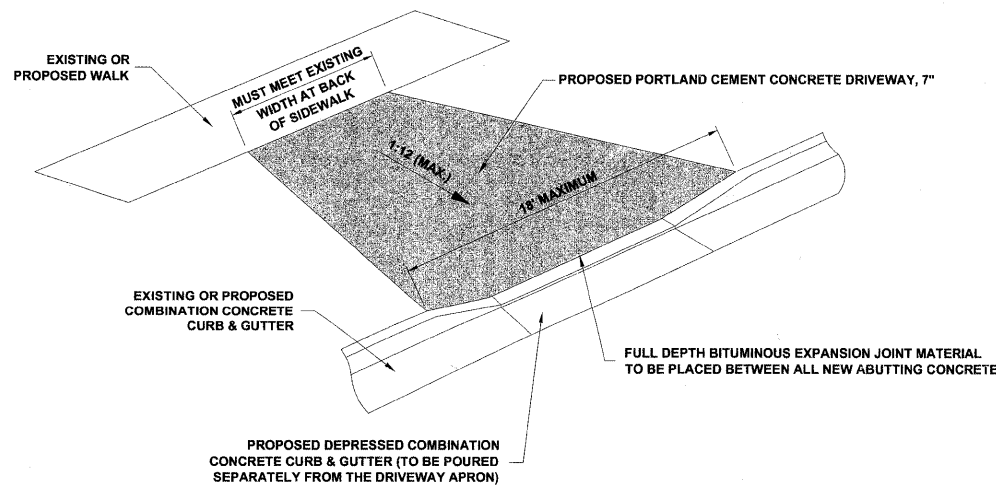


TYPICAL CURB AND GUTTER EXPANSION JOINT



NOTE: COMPOSITE PAVER TILE USED SHALL BE AS MANUFACTURED BY ADA SOLUTIONS, INC., OR AS APPROVED BY ENGINEER.

CAST-IN-PLACE COMPOSITE PAVER TILE FOR DETECTABLE WARNING



DRIVEWAY



◆ Civil Engineers
◆ Municipal Consultants
◆ Established 1911

9933 Roosevelt Road
Westchester, Illinois 60154-2789
Phone: 708.965.8300
Fax: 708.965.1312

DESIGNED - ---	REVISED - ---
DRAWN - ---	REVISED - ---
CHECKED - ---	REVISED - ---
DATE - 01/28/11	REVISED - ---

STATE OF ILLINOIS
DEPARTMENT OF TRANSPORTATION

DETAILS

SCALE: NONE SHEET NO. 1 OF 1 SHEETS STA. TO STA.

F.A.U. RTE. 2753	SECTION 10-00092-00-RS	COUNTY COOK	TOTAL SHEETS 12	SHEET NO. 7
CONTRACT NO. 63577			FED. ROAD DIST. NO. 1 ILLINOIS FED. AID PROJECT ----	