

F.A.U. RTE.	SECTION	COUNTY	TOTAL SHEETS	SHEET NO.
N/A	00-C2000-03-BT	McHENRY	25	1
FED. ROAD DIST. NO. 1		ILLINOIS	FED AID PROJECT CMM-9003 (680)	

CONTRACT NO. 63578

FOR INDEX OF SHEETS, SEE SHEET NO. 2

FOR INDEX OF HIGHWAY STANDARDS, SEE SHEET NO. 2

PROJECT LOCATED IN THE CITY OF CRYSTAL LAKE, ILLINOIS

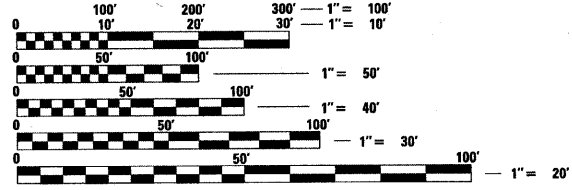
STATE OF ILLINOIS  
DEPARTMENT OF TRANSPORTATION  
DIVISION OF HIGHWAYS

**PLANS FOR PROPOSED  
FEDERAL AID HIGHWAY**

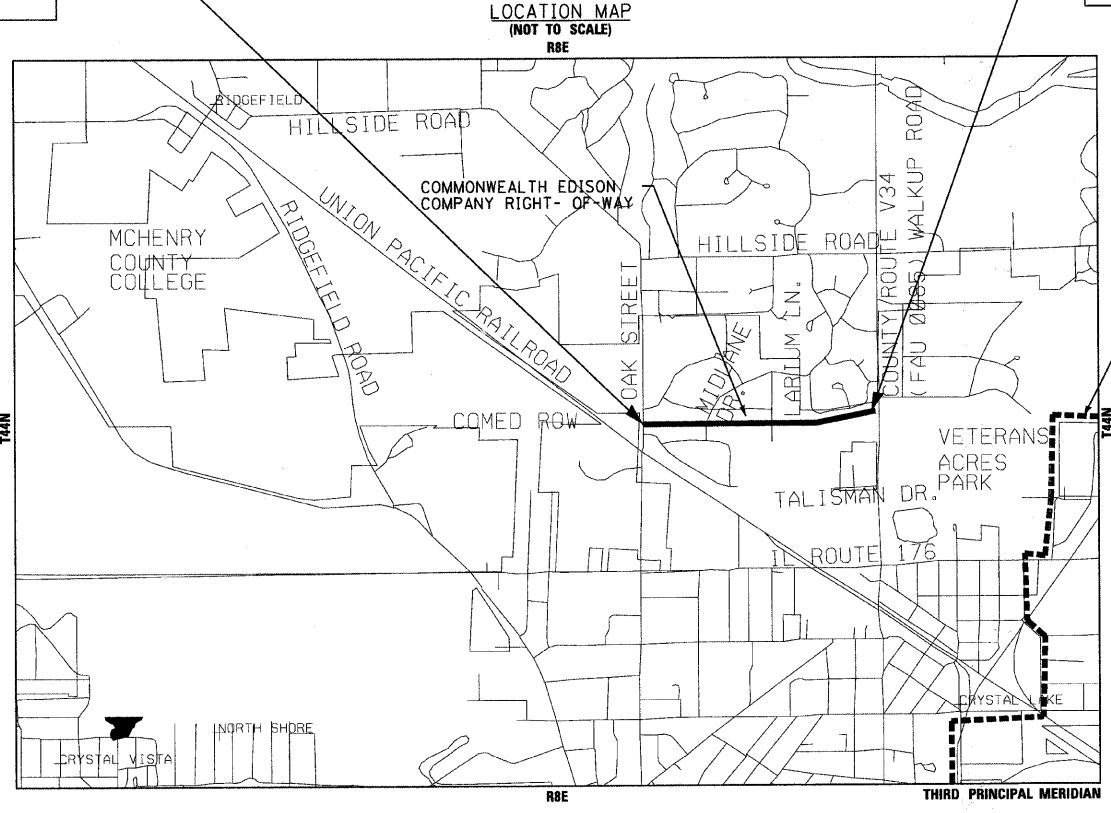
**RIDGEFIELD TRACE EXTENSION  
FROM FAU 0119 (OAK STREET) TO VETERANS ACRES PARK  
BICYCLE PATH  
PROJECT NO: CMM-9003 (680)  
SECTION NO: 00-C2000-03-BT  
JOB NO: C-91-711-10  
McHENRY COUNTY**

**PROJECT NO.:  
CMM-9003 (680)  
BEGIN IMPROVEMENTS  
STA 415+77**

**PROJECT NO.:  
CMM-9003 (680)  
END IMPROVEMENTS  
STA 496+34**



FULL SIZE PLANS HAVE BEEN PREPARED USING STANDARD ENGINEERING SCALES. REDUCED SIZED PLANS WILL NOT CONFORM TO STANDARD SCALES. IN MAKING MEASUREMENTS ON REDUCED PLANS, THE ABOVE SCALES MAY BE USED.



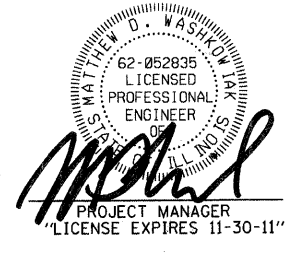
NUNDA TOWNSHIP  
GROSS LENGTH OF IMPROVEMENT = 4,053 LF OR 0.768 MILES  
NET LENGTH OF IMPROVEMENT = 4,053 LF OR 0.768 MILES

J.U.L.I.E. DESIGN STAGE REQUEST  
DIG. No. X3560529/X3560532



CONTACT JULIE AT 811 OR 800-892-0123 WITH THE FOLLOWING:  
COUNTY = McHENRY  
CITY-TWNSHP. = NUNDA  
SEC. & 1/4 SEC. NO. = 29.31.32  
48 HOURS (2 working days) BEFORE YOU DIG

CONTRACT NO. 63578



STATE OF ILLINOIS  
DEPARTMENT OF TRANSPORTATION  
DIVISION OF HIGHWAYS

APPROVED 3-31-11  
*AME. PETERSON*  
McHENRY COUNTY CONSERVATION DISTRICT, REPRESENTATIVE

PASSED APRIL 13, 2011  
*Chad Christopher*  
DISTRICT 1 ENGINEER OF LOCAL ROADS AND STREETS

RELEASING FOR BID  
BASED ON LIMITED  
REVIEW APRIL 14, 2011  
*Dion M. O'Keefe*  
DEPUTY DIRECTOR OF HIGHWAYS, REGION 1 ENGINEER

**PRINTED BY THE AUTHORITY  
OF THE STATE OF ILLINOIS**

COPYRIGHT © 2002 BY BAXTER & WOODMAN, INC.  
 STATE OF ILLINOIS - PROFESSIONAL DESIGN FIRM  
 LICENSE NO. 184-00021 - EXPIRES 7/30/2012  
 PROGRAM AND OFFICE ENGINEER: CHARLES F. RIDDLE, P.E. 847-705-4406 SCHAUMBURG, IL  
 V:\CAD\DRAWINGS\PROJECTS\090593.DWG VAP BY: CAD: SUBVEY\DRAWINGS\090593-COVER.dwg