

SIGN LEGEND

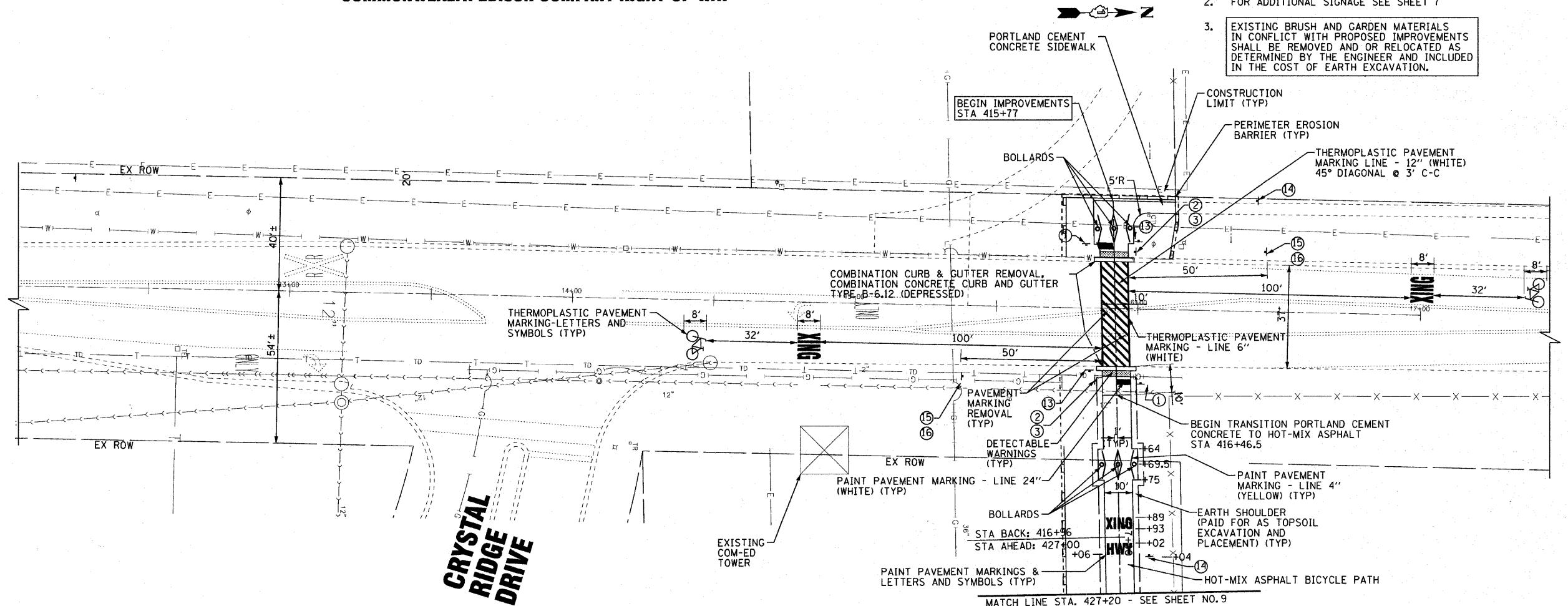
FOR ADDITIONAL SIGNAGE SEE SHEET 7

- ① STOP
R1-1
24" X 24"
- ②
W11-1
24" X 24"
- ③
W16-7PL
24" X 12"
- ⑬ NO MOTOR VEHICLES
R5-3
24" X 24"
- ⑭
W2-1
24" X 24"
- ⑮
BIKE ROUTE
D11-1
24" X 18"
- ⑯
M6-4
12" X 9"

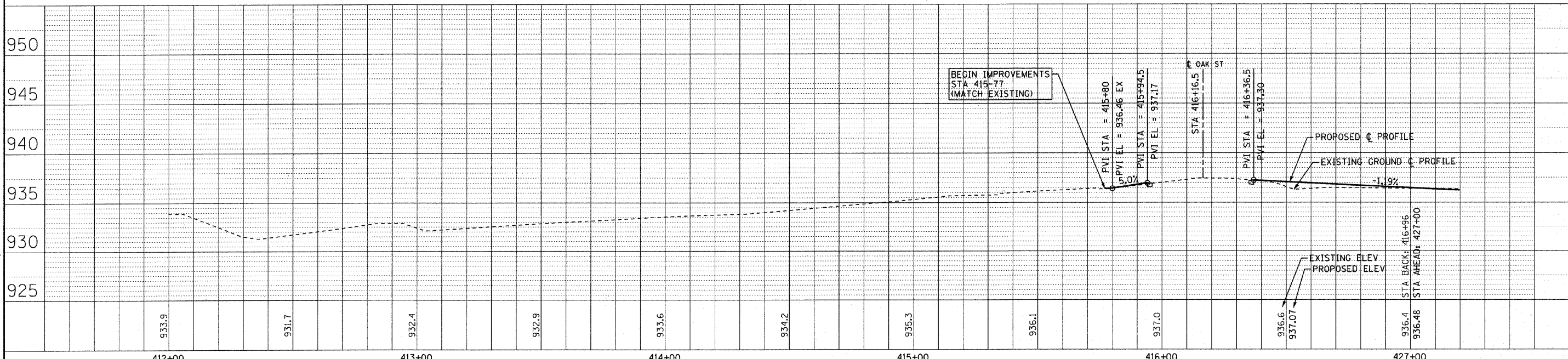
COMMONWEALTH EDISON COMPANY RIGHT-OF-WAY

NOTES:

1. ALL AREAS OF DISTURBANCE SHALL RECEIVE SEEDING, CLASS 2
2. FOR ADDITIONAL SIGNAGE SEE SHEET 7
3. EXISTING BRUSH AND GARDEN MATERIALS IN CONFLICT WITH PROPOSED IMPROVEMENTS SHALL BE REMOVED AND OR RELOCATED AS DETERMINED BY THE ENGINEER AND INCLUDED IN THE COST OF EARTH EXCAVATION.



OAK STREET



COPYRIGHT © 2011 BY BAXTER & WOODMAN, INC.
 5141 S. ILLINOIS STREET, CHICAGO, IL 60632
 TEL: 773.486.1000 FAX: 773.486.1001
 WWW.BAXTERANDWOODMAN.COM
 3/21/2011

	USER NAME = 418c_jc	DESIGNED - AEB	REVISED - PER IDOT 3/25/11	McHENRY COUNTY CONSERVATION DISTRICT RIDGEFIELD TRACE EXTENSION BICYCLE PATH	PLAN AND PROFILE	F.A. RTE.	SECTION	COUNTY	TOTAL SHEETS	SHEET NO.
	FILE NAME = 092693-PP3.aht	CHECKED - MDW	REVISED -			N/A	00-C2000-03-BT	McHENRY	25	8
	PLOT DATE = 3/31/2011	DATE - 1/26/11	REVISED -			JOB NO: C-91-711-10	CONTRACT NO. 63578			
						SCALE: 1" = 20'		STA. 411+80 TO STA. 427+20		FED. ROAD DIST. NO. 1 ILLINOIS FED. AID PROJECT NO. CMM-9003 (6801)
						McHENRY COUNTY CONSERVATION DISTRICT BID #0311.09.01				