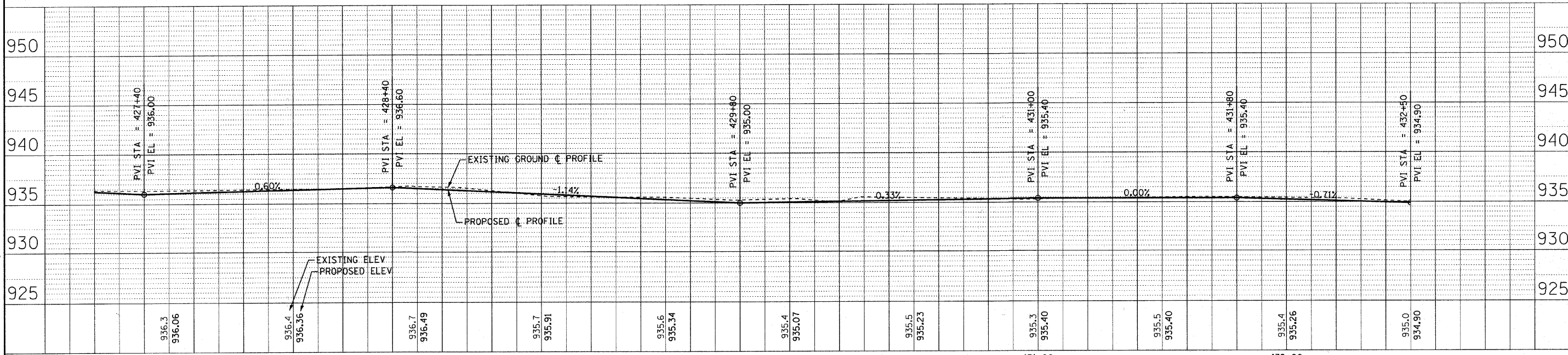


PROP. CURVE 8
 P.I. STA. = 431+03.91
 $\Delta = 56^\circ 38' 50''$ (RT)
 $D = 57^\circ 17' 45''$
 $R = 100.00'$
 $T = 53.90'$
 $L = 98.87'$
 $E = 13.60'$
 $e = \text{-----}$
 $T.R. = \text{-----}$
 $S.E. \text{ RUN} = \text{-----}$
 P.C. STA. = 430+58.94
 P.T. STA. = 431+57.81

NOTES:

1. ALL AREAS OF DISTURBANCE SHALL RECEIVE SEEDING, CLASS 2
2. FOR ADDITIONAL SIGNAGE SEE SHEET 7
3. EXISTING BRUSH AND GARDEN MATERIALS IN CONFLICT WITH PROPOSED IMPROVEMENTS SHALL BE REMOVED AND OR RELOCATED AS DETERMINED BY THE ENGINEER AND INCLUDED IN THE COST OF EARTH EXCAVATION.



 BAXTER & WOODMAN Consulting Engineers	USER NAME = 418e_jp	DESIGNED - AEB	REVISED - PER IDOT 3/25/11	McHENRY COUNTY CONSERVATION DISTRICT RIDGEFIELD TRACE EXTENSION BICYCLE PATH	PLAN AND PROFILE	F.A. RTE.	SECTION	COUNTY	TOTAL SHEETS	SHEET NO.	
	FILE NAME = @98593-PP4.dwg	DRAWN - RKM/CJC	REVISED -			N/A	00-C2000-03-BT	McHENRY	25	9	
	PLOT DATE = 3/31/2011	CHECKED - MDW	REVISED -			JOB NO: C-91-711-10		CONTRACT NO. 63578			
	DATE = 1/26/11	DATE - 1/26/11	REVISED -			SCALE: 1" = 20'		STA. 427+20 TO STA. 432+50		FED. ROAD DIST. NO. 1 ILLINOIS FED. AID PROJECT NO. CUM-9003 (680)	

COPYRIGHT © 2011 BY BAXTER & WOODMAN, INC.
 STATE OF ILLINOIS PROFESSIONAL DESIGN FIRM
 LICENSE NO. 001-086-0001 EXP. 12/31/2011
 PROJECT NO. 001-086-0001
 DRAWING NO. 001-086-0001-PP4