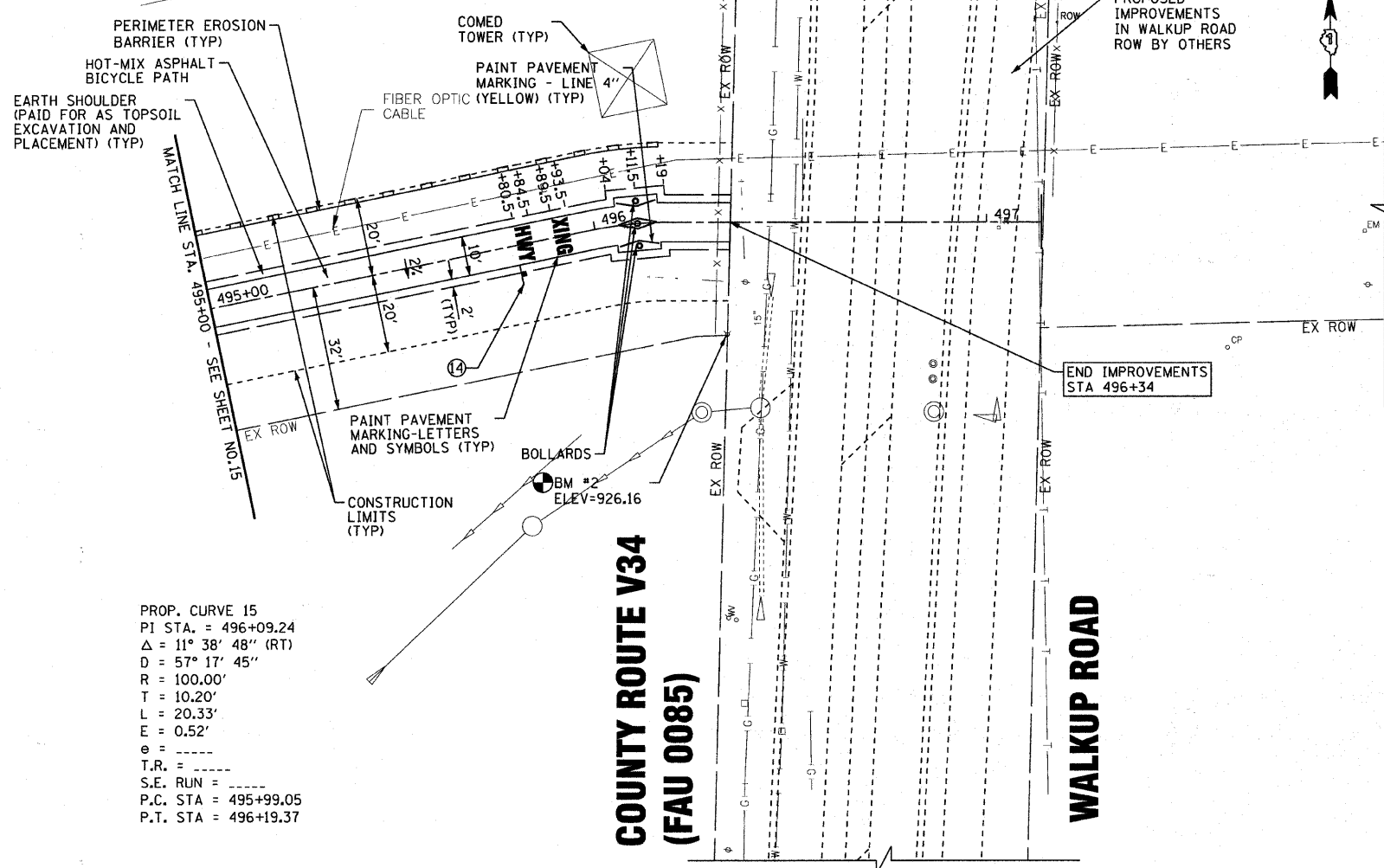
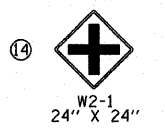


**COMMONWEALTH EDISON COMPANY
RIGHT-OF-WAY**



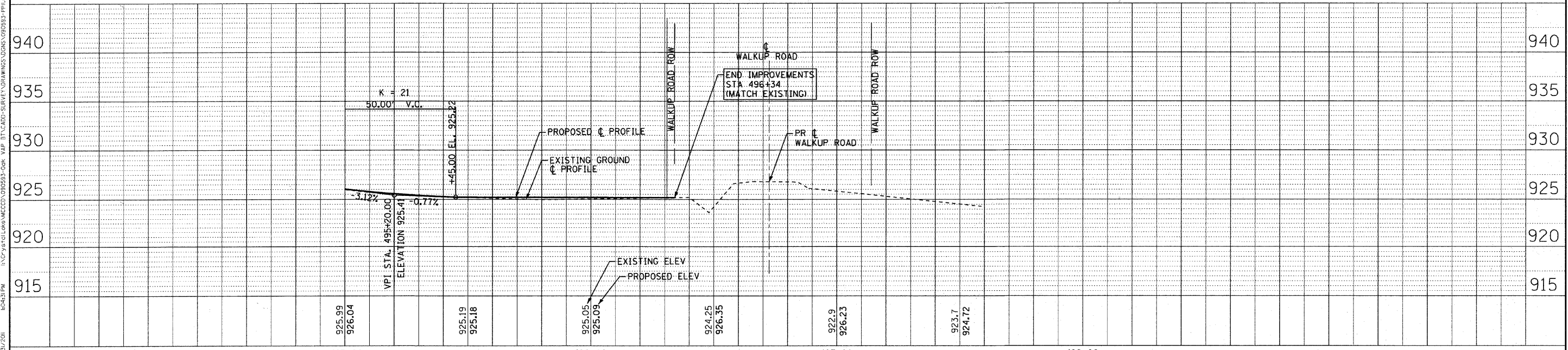
PROP. CURVE 15
 PI STA. = 496+09.24
 $\Delta = 11^\circ 38' 48''$ (RT)
 $D = 57^\circ 17' 45''$
 $R = 100.00'$
 $T = 10.20'$
 $L = 20.33'$
 $E = 0.52'$
 $e = \dots$
 $T.R. = \dots$
 $S.E. RUN = \dots$
 P.C. STA = 495+99.05
 P.T. STA = 496+19.37

SIGN LEGEND



NOTES:

1. ALL AREAS OF DISTURBANCE SHALL RECEIVE SEEDING, CLASS 2
2. FOR ADDITIONAL SIGNAGE SEE SHEET 7
3. EXISTING BRUSH AND GARDEN MATERIALS IN CONFLICT WITH PROPOSED IMPROVEMENTS SHALL BE REMOVED AND OR RELOCATED AS DETERMINED BY THE ENGINEER AND INCLUDED IN THE COST OF EARTH EXCAVATION.



925.99 926.04	925.19 925.18	925.05 925.09	924.25 926.35	922.9 926.23	923.7 924.72
495+00		496+00	497+00	498+00	



USER NAME = 418ajc	DESIGNED - AEB	REVISED - PER IDOT 3/25/11
FILE NAME = 090593-PP11.dwg	DRAWN - RKM/CJC	REVISED -
PLOT DATE = 3/31/2011	CHECKED - MDW	REVISED -
	DATE - 1/26/11	REVISED -

**McHENRY COUNTY CONSERVATION DISTRICT
RIDGFIELD TRACE EXTENSION
BICYCLE PATH**

PLAN AND PROFILE	
SCALE: 1" = 20'	STA. 495+00 TO STA. 497+14

F.A. RTE.	SECTION	COUNTY	TOTAL SHEETS	SHEET NO.
N/A	00-C2000-03-BT	McHENRY	25	16
JOB NO: C-91-711-10		CONTRACT NO. 63578		
FED. ROAD DIST. NO. 1		ILLINOIS	FED. AID PROJECT NO. CMM-9003 (680)	
McHENRY COUNTY CONSERVATION DISTRICT BID #0311.09.01				

COPYRIGHT © 2011 BY BAXTER & WOODMAN, INC.
 STATE OF ILLINOIS PROFESSIONAL DESIGN FIRM
 LICENSE NO. 040-09846-3
 DATE 3/31/2011