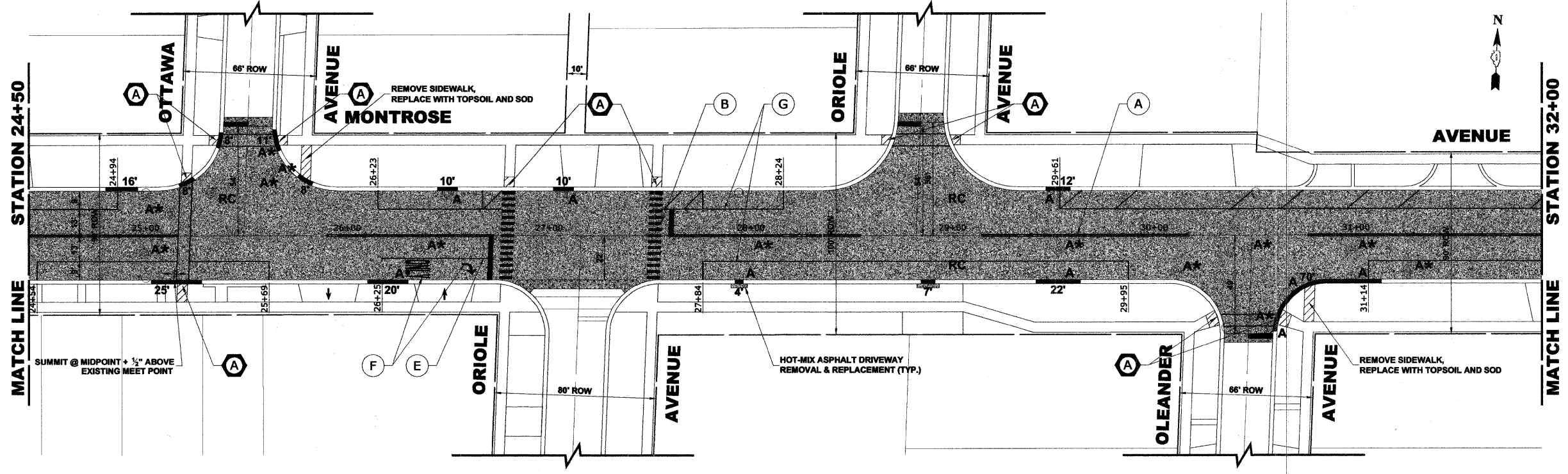


PAVEMENT MARKINGS LEGEND	
ITEM DESCRIPTION	SYMBOL
THERMOPLASTIC PAVEMENT MARKING LINE, 4", DOUBLE @ 11" C-C, YELLOW	(A)
THERMOPLASTIC PAVEMENT MARKING LINE, 12", CROSS WALK @ 36" C-C, WHITE	(B)
THERMOPLASTIC PAVEMENT MARKING LINE, 6", CROSS WALK, WHITE	(C)
THERMOPLASTIC PAVEMENT MARKING LINE, 24", STOP BAR, WHITE	(D)
THERMOPLASTIC PAVEMENT MARKING LINE, 6", TURN LANE, WHITE	(E)
THERMOPLASTIC PAVEMENT MARKING, LETTERS AND SYMBOLS, WHITE	(F)
THERMOPLASTIC PAVEMENT MARKING LINE, 4", PARKING LINE, WHITE	(G)

**NOTE:**  
 \* DENOTES FRAMES AND LIDS TO BE ADJUSTED (SPECIAL)  
 (A) DETECTABLE WARNING



Drawing file: W:\Projects\61210060 - Montrose Ave LAPP (Huffman to Soye)\MontroseAveLAPP.dwg Mar 30, 2011 - 9:32am

**HANCOCK ENGINEERING**  
 Civil Engineers  
 Municipal Consultants  
 Established 1911  
 9933 Roosevelt Road  
 Waukegan, Illinois 60154-2780  
 Phone: 708/965-0390  
 Fax: 708/965-1212

DESIGNED	---	REVISED	---
DRAWN	---	REVISED	---
CHECKED	---	REVISED	---
DATE	03/25/11	REVISED	---

**STATE OF ILLINOIS  
 DEPARTMENT OF TRANSPORTATION**

**MONTROSE AVENUE PAVING PLAN**  
 SCALE: 1" = 30'    SHEET NO. 2 OF 5 SHEETS    STA. 16+00    TO STA. 32+00

F.A.U. RTE.	SECTION	COUNTY	TOTAL SHEETS	SHEET NO.
2729	10-00060-00-RS	COOK	17	6
FED. ROAD DIST. NO. 1 ILLINOIS			CONTRACT NO. 63582 FED. AID PROJECT	