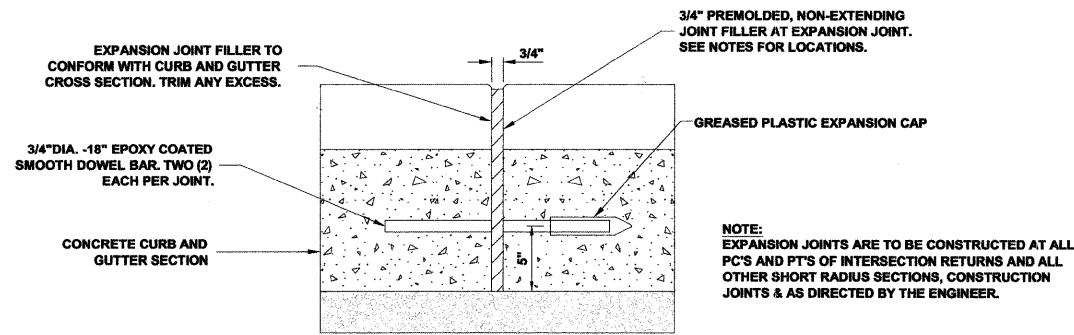
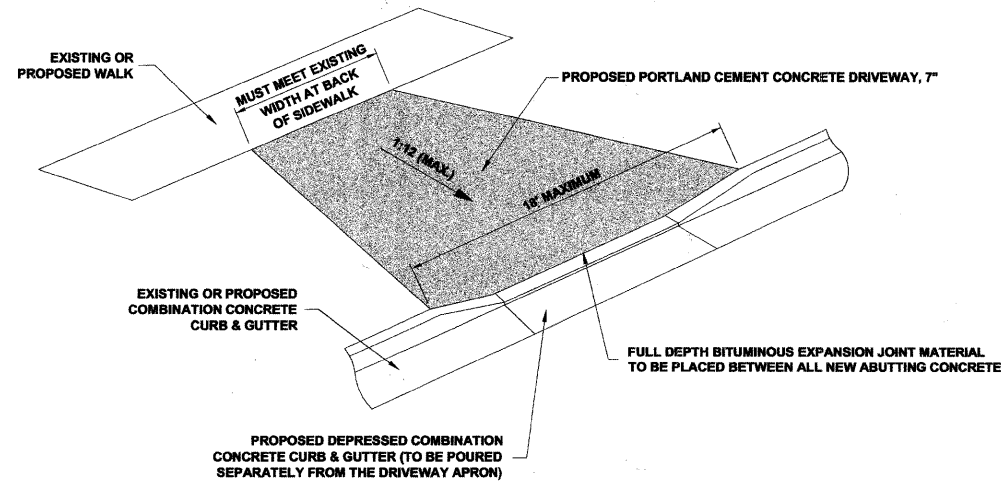


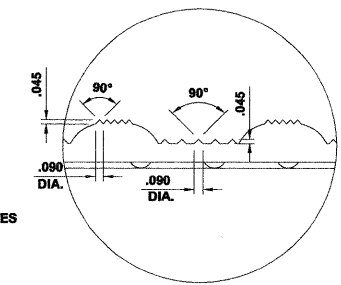
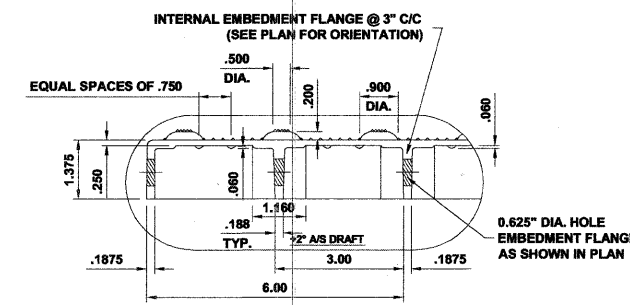
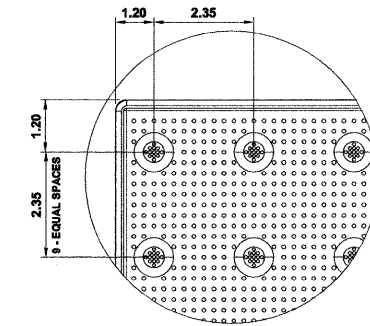
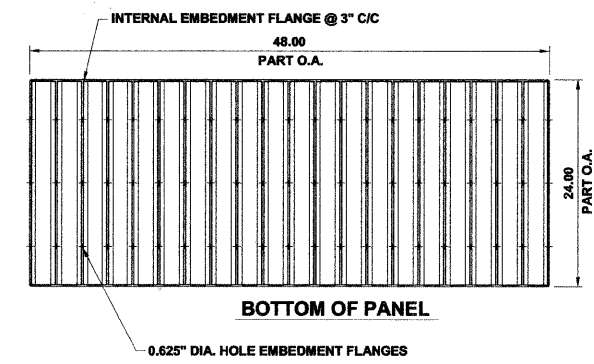
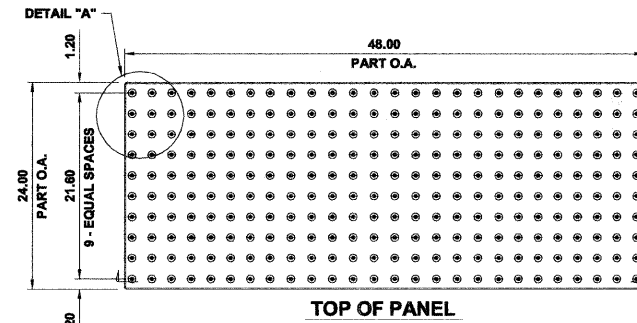
**A.D.A. RAMP**



**TYPICAL CURB AND GUTTER EXPANSION JOINT**

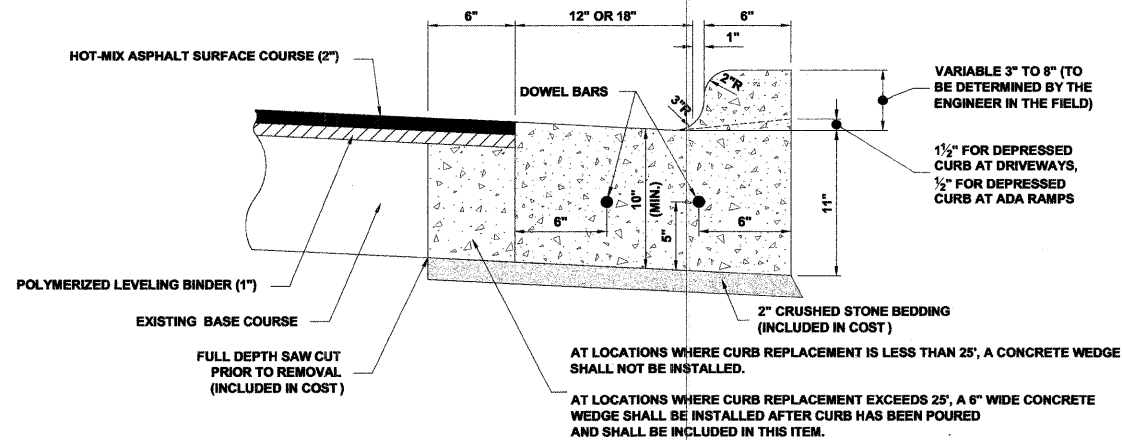


**DRIVEWAY**



NOTE: COMPOSITE PAVER TILE USED SHALL BE AS MANUFACTURED BY ADA SOLUTIONS, INC., OR AS APPROVED BY ENGINEER.

**CAST-IN-PLACE COMPOSITE PAVER TILE FOR DETECTABLE WARNING**



NOTES:

1. PROVIDE 2 - 3/4" DIAMETER, 18" LONG EPOXY COATED SMOOTH BARS WITH PLASTIC EXPANSION CAPS AT EACH EXPANSION JOINT.
2. CONTRACTION JOINT - 2" DEEP CONTRACTION JOINTS SHALL BE SAWED AT EQUAL SPACES (NOT EXCEEDING 15 FEET) BETWEEN NORMAL EXPANSION JOINTS, IN THE UPPER 1/3 OF CURB & GUTTERS WITHIN 24 HOURS OF PLACEMENT.
3. A LEAN CONCRETE WEDGE IS TO BE POURED IN THE SPACE BETWEEN THE NEW CURB & THE EXISTING PAVEMENT AFTER THE CURB HAS REACHED ITS INITIAL SET.

**COMBINATION CONCRETE CURB & GUTTER**



◆ Civil Engineers  
◆ Municipal Consultants  
◆ Established 1911

9313 Roosevelt Road  
Westchester, Illinois 60154-2780  
Phone: 708/965-0300  
Fax: 708/965-1312

DESIGNED	--	REVISED	--
DRAWN	--	REVISED	--
CHECKED	--	REVISED	--
DATE	03/25/11	REVISED	--

STATE OF ILLINOIS  
DEPARTMENT OF TRANSPORTATION

DETAILS

SCALE: NONE SHEET NO. 1 OF 1 SHEETS STA. TO STA.

F.A.U. RTE.	SECTION	COUNTY	TOTAL SHEETS	SHEET NO.
2729	10-00060-00-RS	COOK	17	11
FED. ROAD DIST. NO. 1   ILLINOIS			CONTRACT NO. 63582	
FED. AID PROJECT				