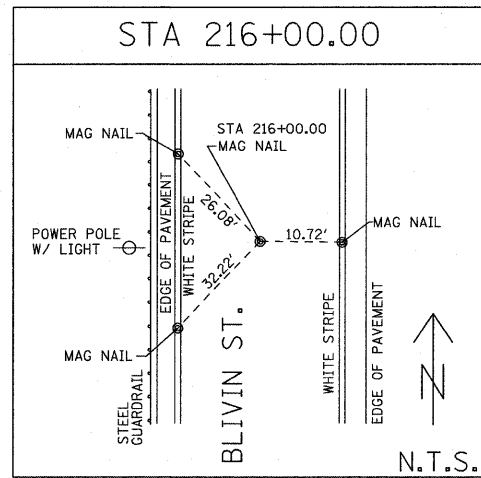


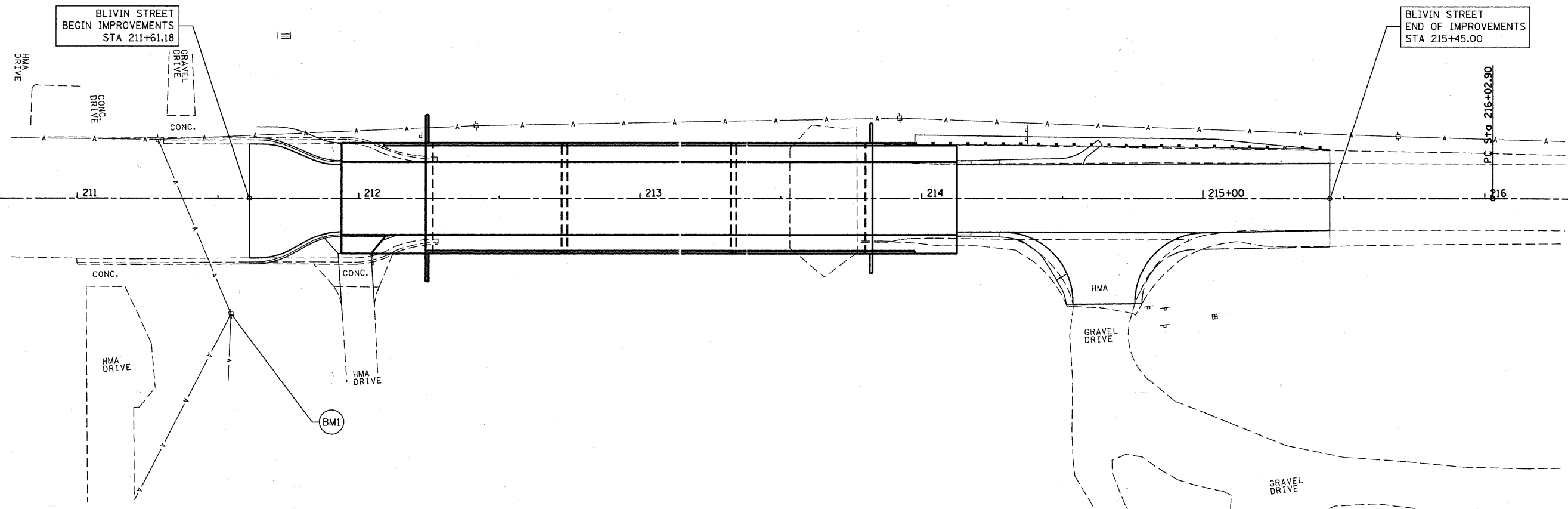
STA 210+00.00  
N 35,904.02  
E 3,052.13



STA 216+00.00  
N 36,499.83  
E 3,122.91

BENCHMARKS

- BM1 RR SPIKE IN W. FACE POWERPOLE - 1ST POWERPOLE  
S. OF NIPPERSINK CREEK BRIDGE ON E. SIDE OF  
BLIVIN STREET  
ELEV=772.16 (NGVD 29)
- BM2 RR SPIKE IN E. FACE POWERPOLE - 2ND POWERPOLE  
S. OF RAILROAD TRACKS ON W. SIDE OF  
BLIVIN STREET  
ELEV=780.87 (NGVD 29)



FILE NAME = M:\255-010 Blivin Phase II\CADD\_Sheets\01080111-shr-ATB.dgn

**B** Bollinger, Lach & Associates, Inc.  
ITASCA, ILLINOIS

USER NAME = dbruckelmeyer	DESIGNED - DBB	REVISED -
PLOT SCALE = 20.0000' / IN.	DRAWN - DBB	REVISED -
PLOT DATE = 3/25/2011	CHECKED - CRF	REVISED -
	DATE - 03-28-11	REVISED -

**BLIVIN STREET OVER NIPPERSINK CREEK**

**ALIGNMENT, TIES, AND BENCHMARKS**

SCALE: 1"=20' SHEET NO. 10 OF 69 SHEETS STA. 211+61.18 TO STA. 215+45.00

F.A. RTE.	SECTION	COUNTY	TOTAL SHEETS	SHEET NO.
	08-00355-00-BR	MCHENRY	69	10
CONTRACT NO. 63583				
FED ROAD DIST NO. 1 ILLINOIS FED AID PROJECT				