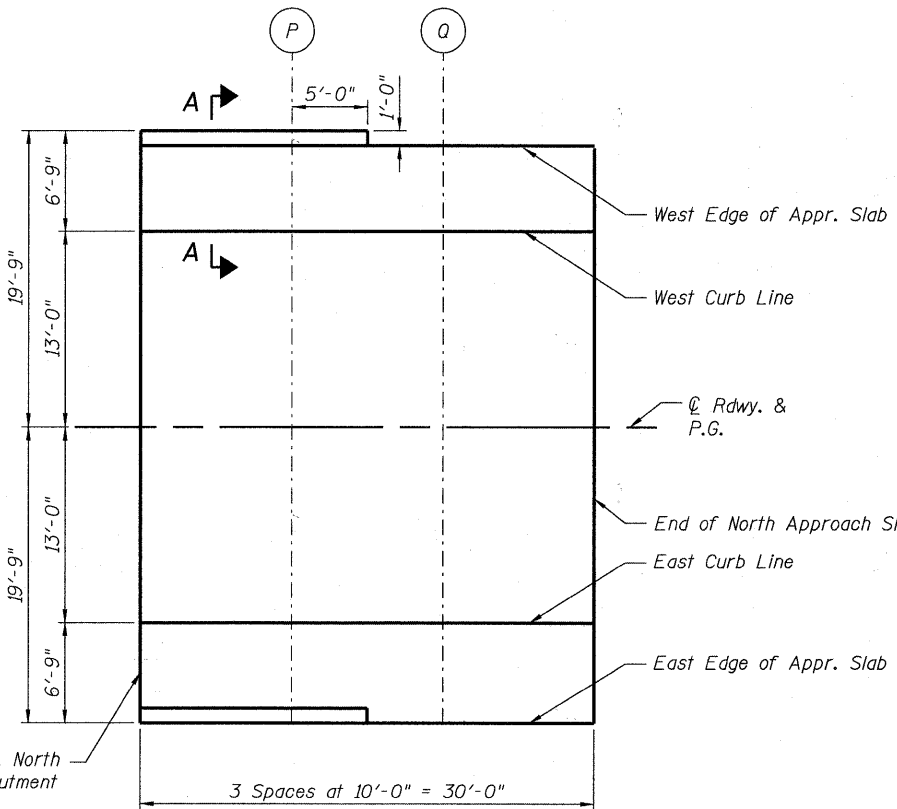
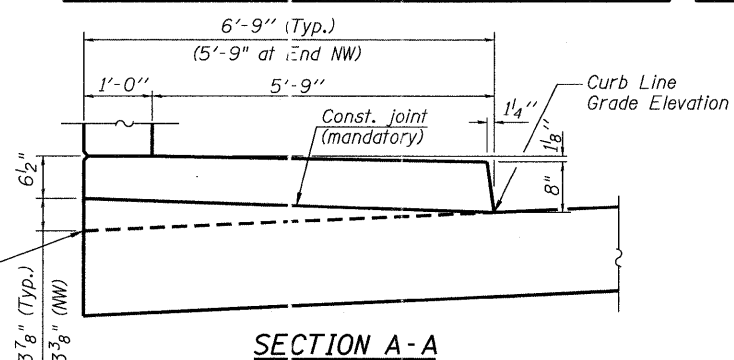


**PLAN**  
(South Approach)



**PLAN**  
(North Approach)



**SECTION A-A**

**WEST EDGE OF APPR. SLAB**

Location	Station	Offset	Theoretical Grade Elevations
End S. Appr. Pav't.	211+93.86	-19.75	769.15
N	212+03.86	-19.75	768.84
O	212+13.86	-19.75	768.52
Bk. of S. Abut.	212+23.86	-19.75	768.21

**WEST CURB LINE**

Location	Station	Offset	Theoretical Grade Elevations
End S. Appr. Pav't.	211+93.86	-13.00	769.25
N	212+03.86	-13.00	768.94
O	212+13.86	-13.00	768.63
Bk. of S. Abut.	212+23.86	-13.00	768.32

**☉ ROADWAY & P.G.**

Location	Station	Offset	Theoretical Grade Elevations
End S. Appr. Pav't.	211+93.86	0.00	769.46
N	212+03.86	0.00	769.15
O	212+13.86	0.00	768.83
Bk. of S. Abut.	212+23.86	0.00	768.52

**EAST CURB LINE**

Location	Station	Offset	Theoretical Grade Elevations
End S. Appr. Pav't.	211+93.86	13.00	769.66
N	212+03.86	13.00	769.35
O	212+13.86	13.00	769.04
Bk. of S. Abut.	212+23.86	13.00	768.72

**EAST EDGE OF APPR. SLAB**

Location	Station	Offset	Theoretical Grade Elevations
End S. Appr. Pav't.	211+93.86	19.75	769.77
N	212+03.86	19.75	769.45
O	212+13.86	19.75	769.14
Bk. of S. Abut.	212+23.86	19.75	768.83

**SOUTH APPROACH**

**WEST EDGE OF APPR. SLAB**

Location	Station	Offset	Theoretical Grade Elevations
Bk. of N. Abut.	213+82.53	-19.75	763.26
P	213+92.53	-19.75	762.89
Q	214+02.53	-18.75	762.53
End N. Appr. Pav't.	214+12.53	-18.75	762.16

**WEST CURB LINE**

Location	Station	Offset	Theoretical Grade Elevations
Bk. of N. Abut.	213+82.53	-13.00	763.37
P	213+92.53	-13.00	762.99
Q	214+02.53	-13.00	762.62
End N. Appr. Pav't.	214+12.53	-13.00	762.25

**☉ ROADWAY & P.G.**

Location	Station	Offset	Theoretical Grade Elevations
Bk. of N. Abut.	213+82.53	0.00	763.57
P	213+92.53	0.00	763.19
Q	214+02.53	0.00	762.82
End N. Appr. Pav't.	214+12.53	0.00	762.45

**EAST CURB LINE**

Location	Station	Offset	Theoretical Grade Elevations
Bk. of N. Abut.	213+82.53	13.00	763.77
P	213+92.53	13.00	763.40
Q	214+02.53	13.00	763.02
End N. Appr. Pav't.	214+12.53	13.00	762.66

**EAST EDGE OF APPR. SLAB**

Location	Station	Offset	Theoretical Grade Elevations
Bk. of N. Abut.	213+82.53	19.75	763.88
P	213+92.53	19.75	763.50
Q	214+02.53	19.75	763.13
End N. Appr. Pav't.	214+12.53	19.75	762.76

**NORTH APPROACH**

FILE NAME = W:\755-010 Blivin Phase II\CADD Sheets\Structure\1755-010\_SHT-05\_Top of Appr. Slab.dgn

**Bollinger, Lach & Associates, Inc.**  
ITASCA, ILLINOIS

USER NAME = gonzalo	DESIGNED - SRT	REVISED -
PLOT SCALE =	CHECKED - JJI	REVISED -
PLOT DATE = 3/25/2011	DRAWN - GM	REVISED -
	CHECKED - JJI	REVISED -

DESIGNED - SRT	REVISED -
CHECKED - JJI	REVISED -
DRAWN - GM	REVISED -
CHECKED - JJI	REVISED -

**McHENRY COUNTY**  
**DIVISION OF TRANSPORTATION**  
**BLIVIN STREET OVER NIPPERSINK CREEK**

<b>TOP OF APPROACH SLAB ELEVATIONS</b>		
<b>STRUCTURE NO. 056-3191</b>		
SCALE: 5	SHEET NO. 5 OF 28 SHEETS	STA. TO STA.

F.A. RTE.	SECTION	COUNTY	TOTAL SHEETS	SHEET NO.
	08-00355-00-BR	McHENRY	69	30
CONTRACT NO. 63583			ILLINOIS FED. AID PROJECT	