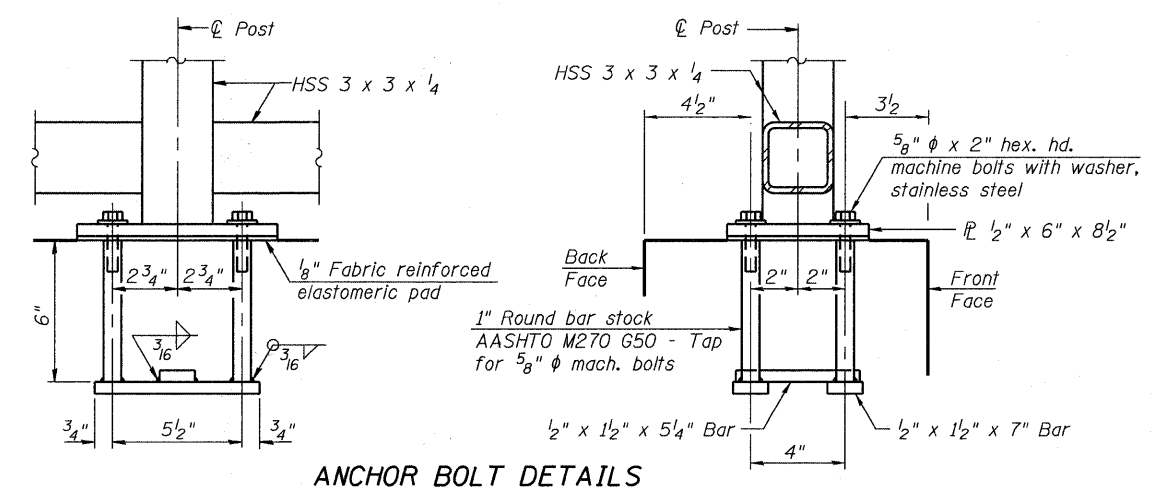
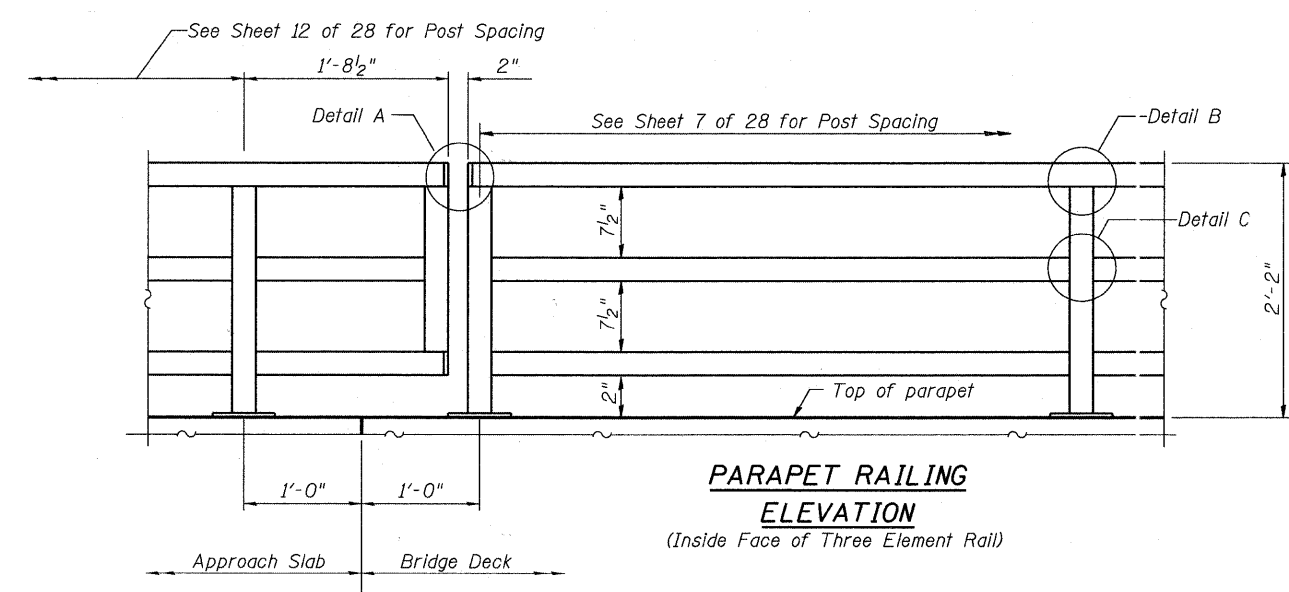
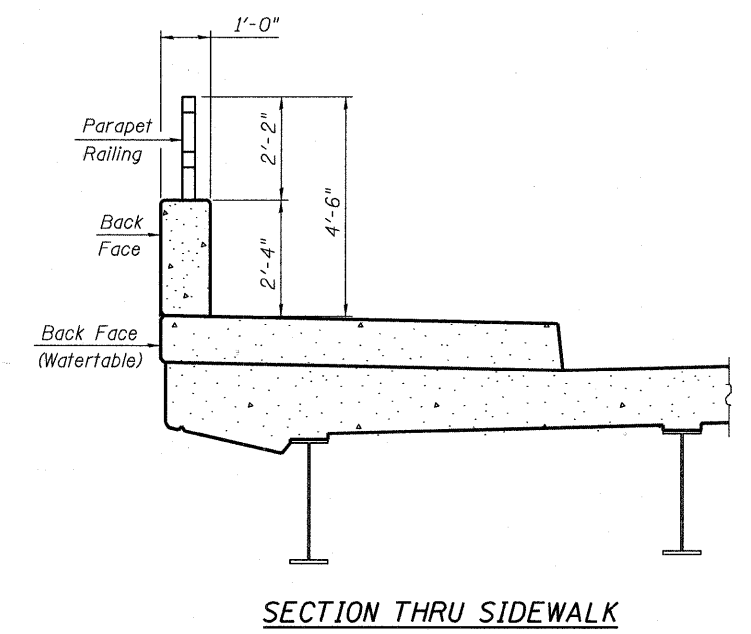
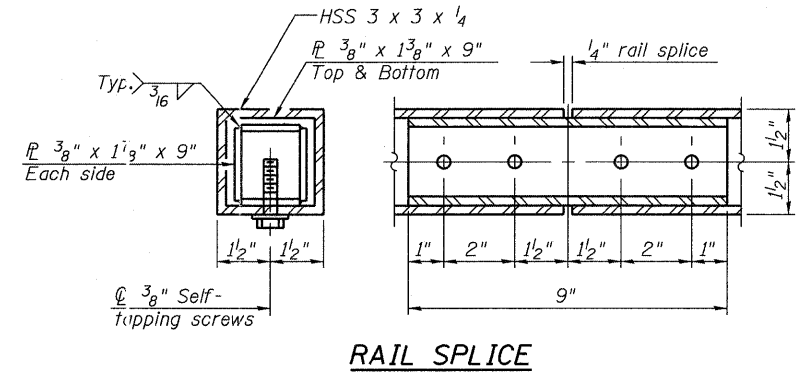
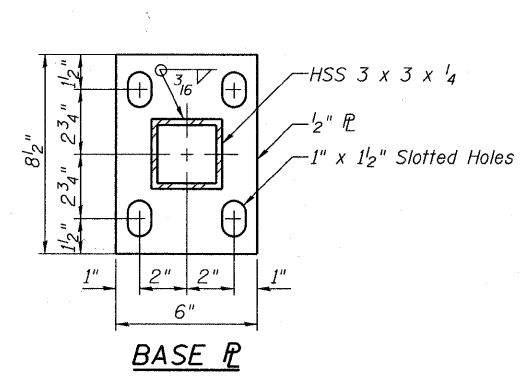


Notes:
All steel rail elements shall be galvanized according to Article 509.05 of the Standard Specifications.

BILL OF MATERIAL *

Item	Unit	Quantity
Parapet Railing	Foot	354

* Rail on bridge and appr. slab.



In lieu of the cast-in-place anchor device shown, the Contractor has the option of drilling and setting 5/8" φ anchor rods according to Article 509.06 of the Standard Specifications, except anchor rod assemblies shall be stainless steel. Embedment shall be according to the manufacturer's specifications.

FILE NAME = M:\755-010 B11011 Phase II\CADD_Sheets\Structure\1755-010B_SHT-13 S - PARAPET RAILING DETAIL.dwg