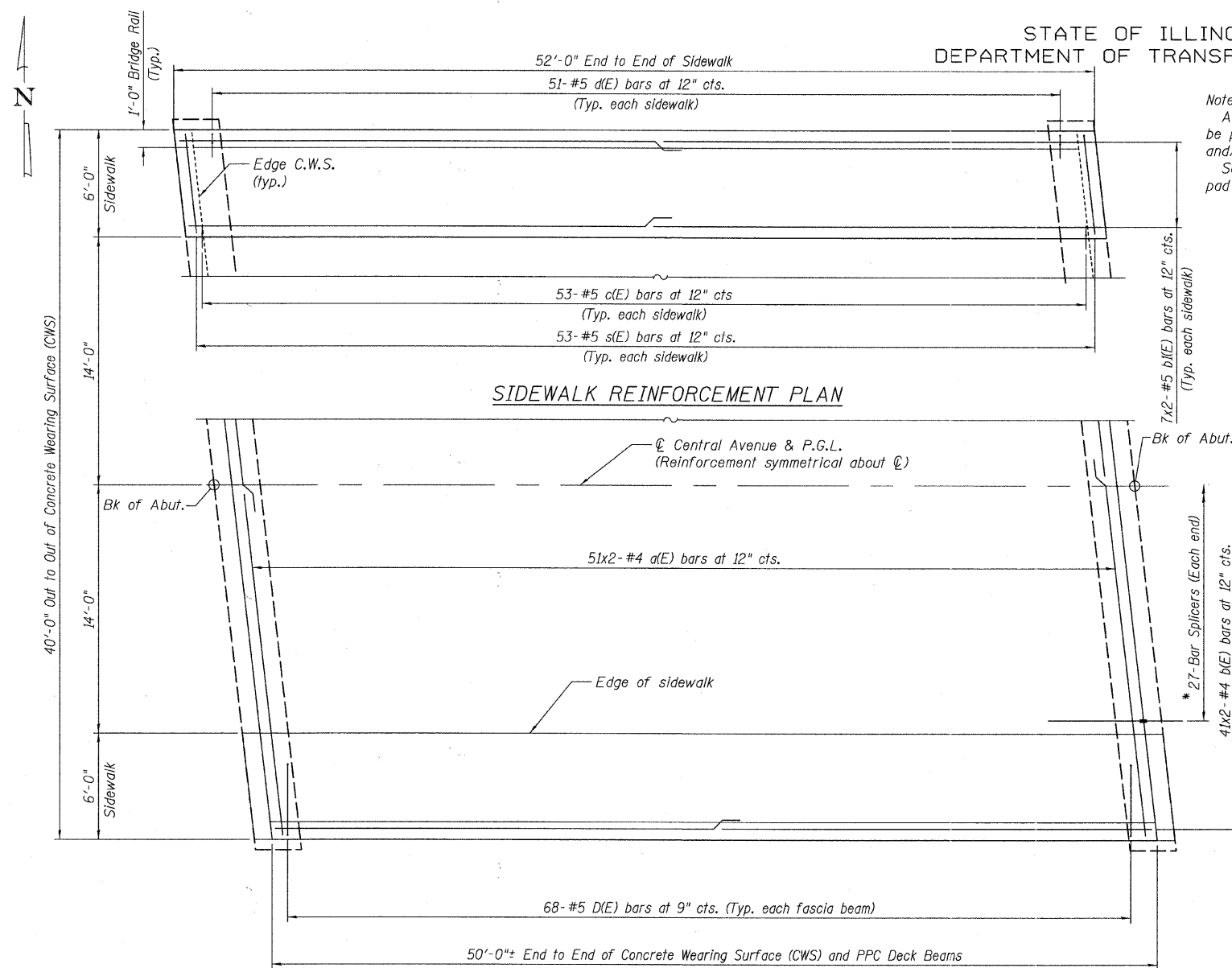
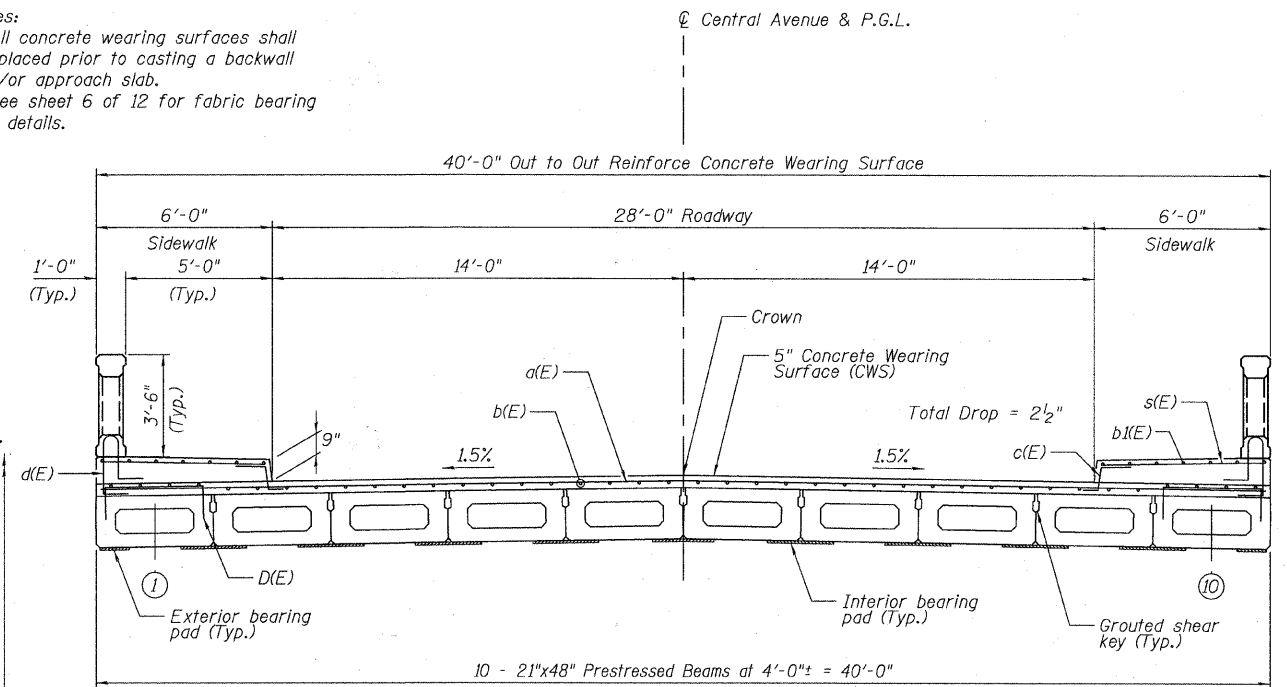


STATE OF ILLINOIS
DEPARTMENT OF TRANSPORTATION



Notes:
All concrete wearing surfaces shall be placed prior to casting a backwall and/or approach slab.
See sheet 6 of 12 for fabric bearing pad details.

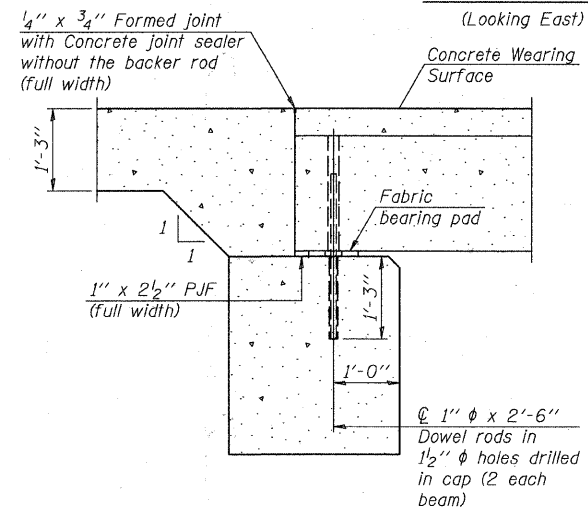


CROSS SECTION
(Looking East)

BILL OF MATERIAL - CWS

Bar	No.	Size	Length	Shape
a(E)	102	#4	21'-2"	—
b(E)	82	#4	26'-2"	—
Protective Coat			Sq. Yd.	156
Bridge Deck Grooving			Sq. Yd.	156
Reinforcement Bars, Epoxy Coated			Pound	2,880
Bar Splicers			Each	54
Concrete Wearing Surface, 5"			Sq. Yd.	222

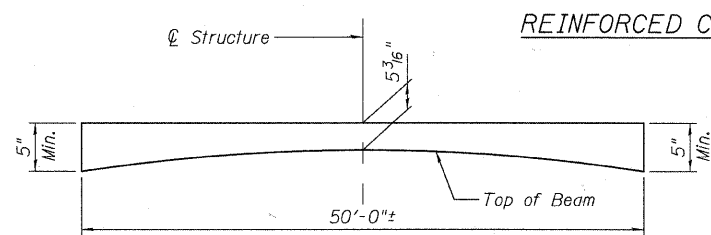
* See Special Provisions



SECTION THRU ABUTMENT

Notes:
After beams have been erected, holes shall be drilled into substructure and anchor dowels placed. Dowel holes shall be filled with non-shrink grout to top of beam and allowed to cure min. 24 hrs. prior to grouting the shear keys.
Quantity of concrete included with Concrete Superstructure.
See Sheet Nos. 5 & 6 of 12 for beam & bearing pad details.

REINFORCED CONCRETE WEARING SURFACE PLAN



ANTICIPATED CONCRETE WEARING SURFACE PROFILE

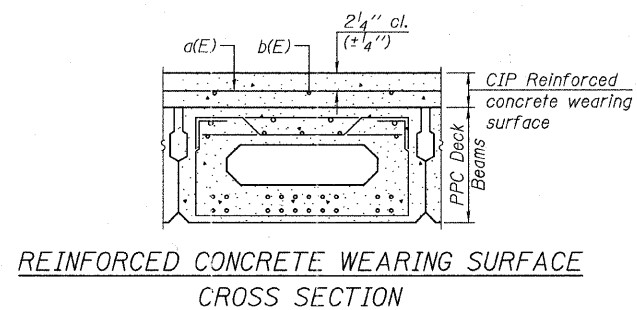
(For information only)

Notes:
See sheets 4 thru 6 of 12 for Superstructure Details.
Bars indicated thus 20 x 2-#4 etc. indicates 20 lines of bars with 2 lengths per line.
Spacing of the a(E) bar shall be measured along the centerline of structure.
See sheet 11 of 12 for Bar Splicer Assembly Details.
See sheet 4 of 12 for Sidewalk and Railing Details and Bill of Materials.

DESIGNED	DYS
CHECKED	JPB
DRAWN	DYS
CHECKED	JPB

MIN. BAR LAP

#4 = 2'-7"
#5 = 3'-3"



DECK PLAN AND SECTION DETAILS
STRUCTURE NO. 049-6161

SHEET NO. S-3 12 SHEETS	F.A.U. RTE.	SECTION	COUNTY	TOTAL SHEETS	SHEET NO.
		09-0085-00-BR	LAKE	22	11
FED. ROAD DIST. NO. _			ILLINOIS	FED. AID PROJECT	
CONTRACT NO. 63584					

URS
100 South Wacker Drive, Suite 500
Chicago, IL 60606
Tel: 312.939.1000
Fax: 312.939.4198