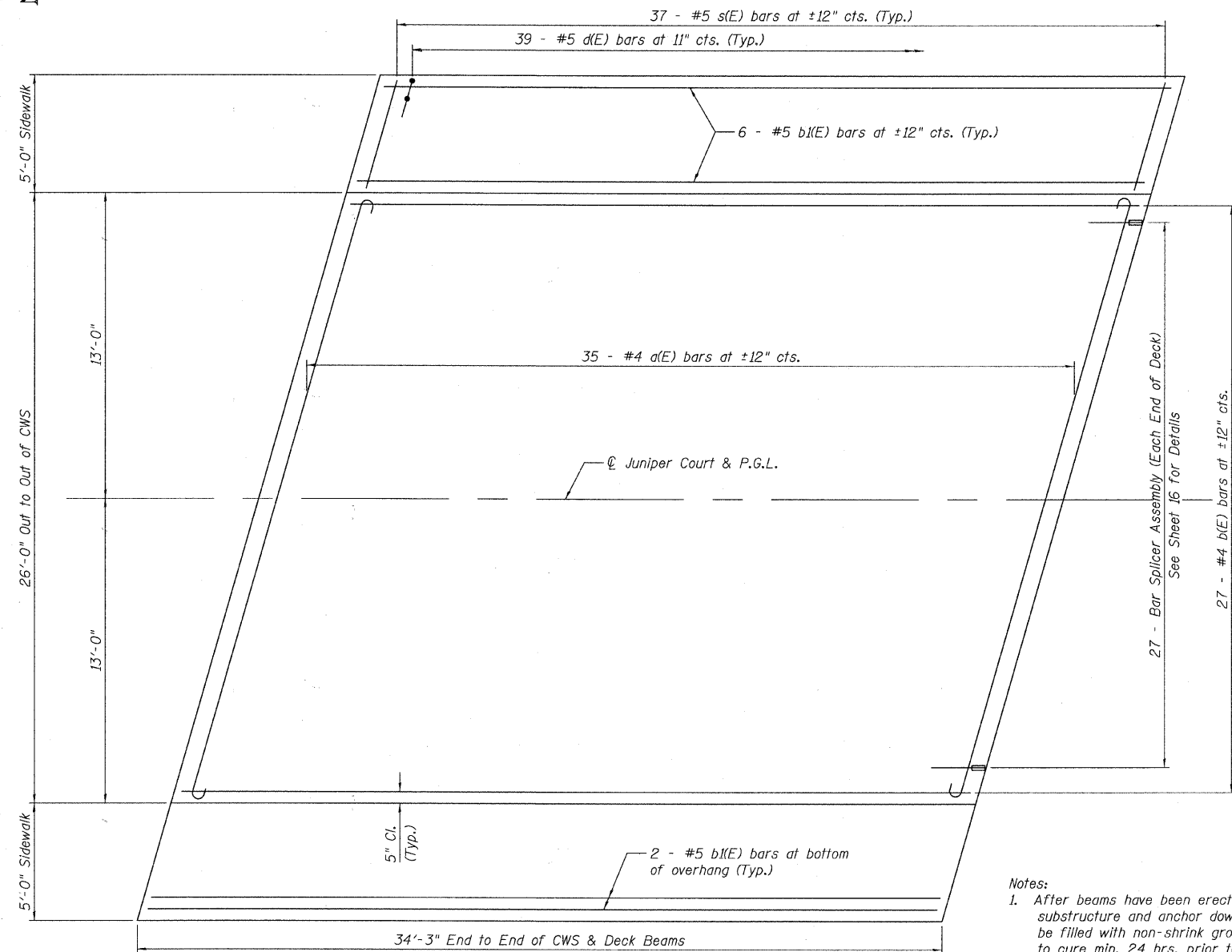
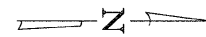
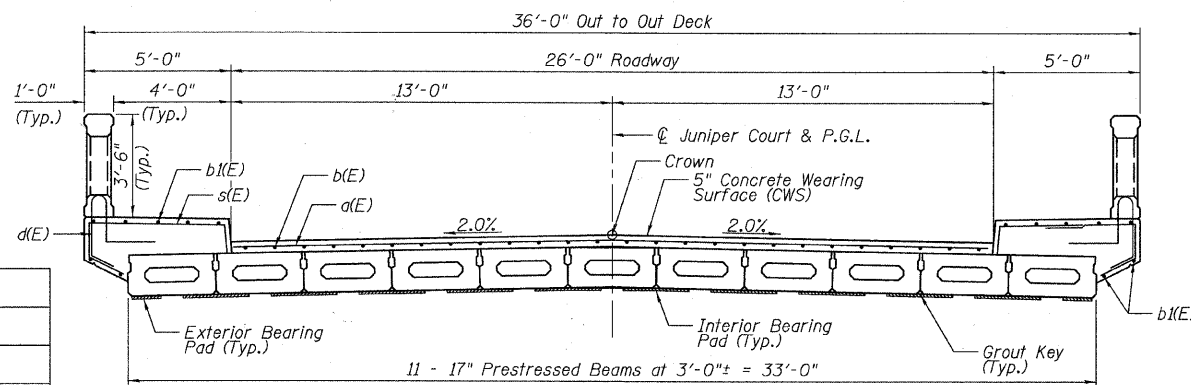


STATE OF ILLINOIS
DEPARTMENT OF TRANSPORTATION



PLAN

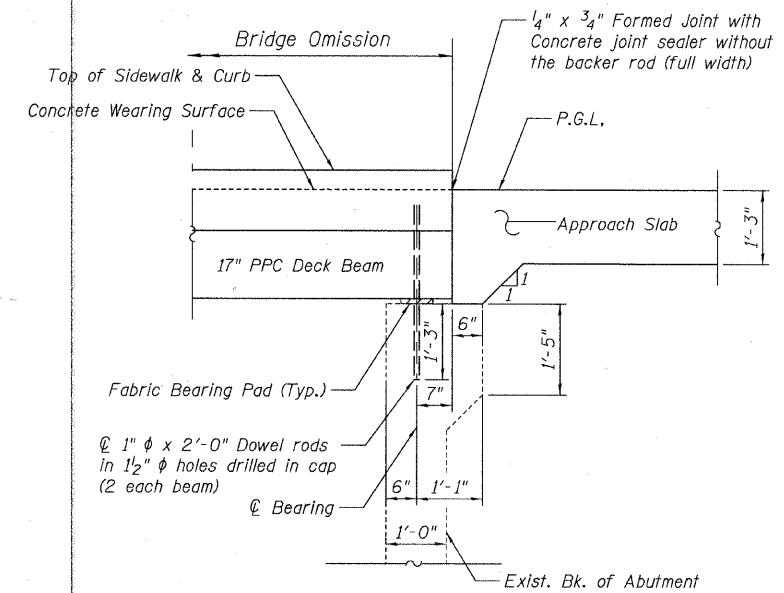


CROSS SECTION
(Looking Upstation)

DESIGNED	L. LAWS
CHECKED	J. BUCHOLC
DRAWN	L. LAWS
CHECKED	J. BUCHOLC

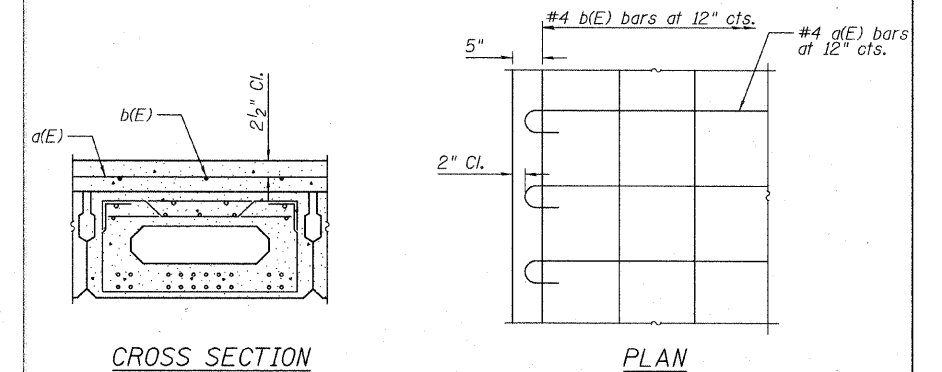
Notes:

1. After beams have been erected, holes shall be drilled into substructure and anchor dowels placed. Dowel holes shall be filled with non-shrink grout to top of beam and allowed to cure min. 24 hrs. prior to grouting the shear keys.
2. All horizontal dimensions are at right angles to beam ends.
3. Hatched area to be poured after Precast Prestressed Concrete Deck Beams have been erected. Quantity of concrete included with Concrete Superstructure.
4. See Sheet Nos. 5 & 6 for beam & bearing pad details.
5. See Sheet No. 4 for superstructure details and Bill of Material.
6. See Sheet No. 4 for concrete bridge rail reinforcement.



SECTION THRU EXISTING ABUTMENT

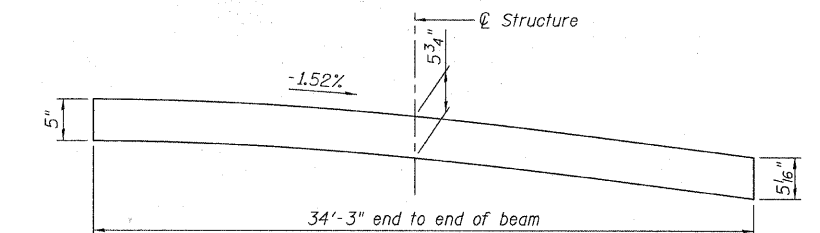
(Horizontal dim. @ Rt. L's)



CROSS SECTION

PLAN

REINFORCED CONCRETE WEARING SURFACE DETAILS



REINFORCED CONCRETE WEARING SURFACE PROFILE

DECK PLAN & SECTION
STRUCTURE NO. 049-6153



SHEET NO. 3	F.A.U. RTE.	SECTION	COUNTY	TOTAL SHEETS	SHEET NO.
		09-00084-00-BR	LAKE	16	9
10 SHEETS	CONTRACT NO. 63587				
FED. ROAD DIST. NO. _ ILLINOIS FED. AID PROJECT					