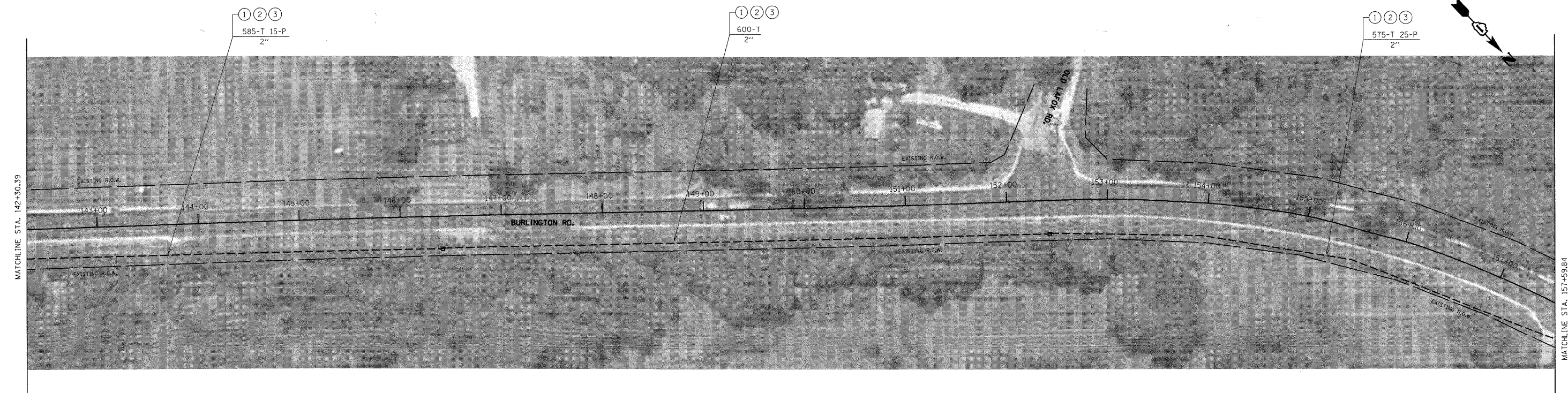
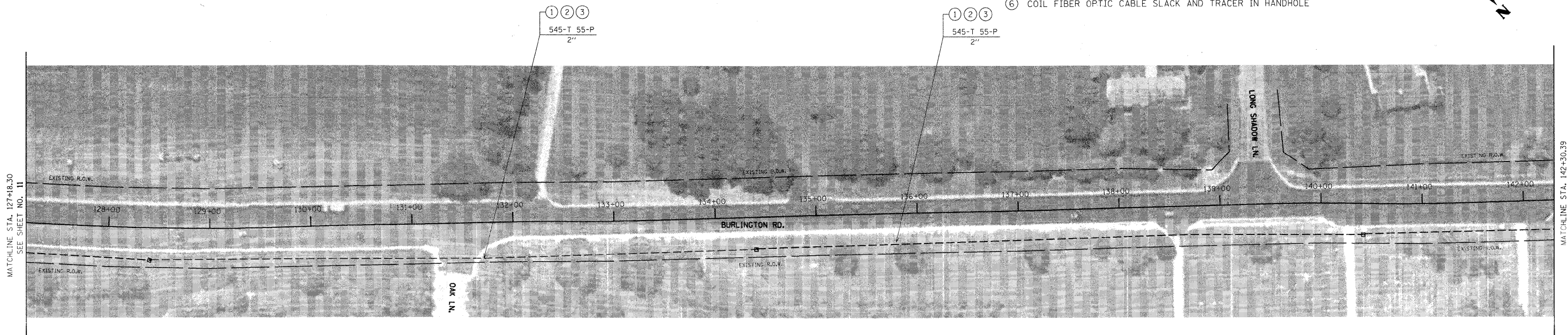
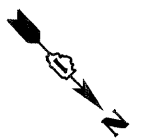
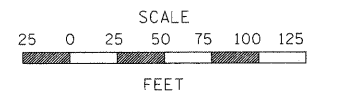


NOTES:

- ① PROPOSED FIBER OPTIC CABLE IN CONDUIT, SM36F
- ② PROPOSED FIBER OPTIC CABLE IN CONDUIT, SM144F
- ③ PROPOSED ELECTRIC CABLE IN CONDUIT, TRACER, NO. 14 1C
- ④ TERMINATE FIBERS AT DISTRIBUTION ENCLOSURE IN CABINET
- ⑤ SPLICE FIBERS DISTRIBUTION ENCLOSURE IN CABINET
- ⑥ COIL FIBER OPTIC CABLE SLACK AND TRACER IN HANDHOLE



FILE NAME = #FILE#	USER NAME = #USER#	DESIGNED - DG	REVISED -	STATE OF ILLINOIS DEPARTMENT OF TRANSPORTATION	BURLINGTON ROAD FROM IL 64 TO TMC		F.A.P. RTE.	SECTION	COUNTY	TOTAL SHEETS	SHEET NO.
	PLOT SCALE = #SCALE#	DRAWN - JM	REVISED -		VARIES	08-00389-00-TL	KANE	28	12		
	PLOT DATE = #DATE#	CHECKED - DB	REVISED -		SCALE: 1" = 50' SHEET NO. 2 OF 4 SHEETS STA. 127+18.30 TO STA. 157+59.84			CONTRACT NO. 63594			
		DATE - 04/11/2011	REVISED -		ILLINOIS FED. AID PROJECT						