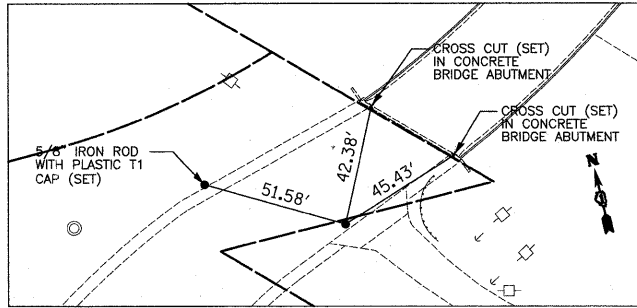
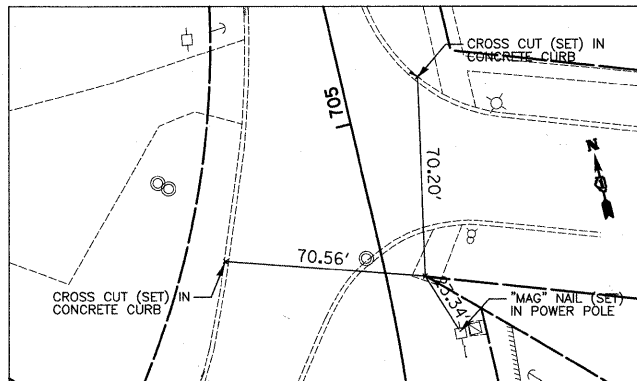


DATE	
BY	
SURVEYED	
PLOTTED	
TEMPLATE	
NOTE BOOK	
AREAS CHECKED	
NO.	

DATE	
BY	
SURVEYED	
PLOTTED	
TEMPLATE	
NOTE BOOK	
AREAS CHECKED	
NO.	



CONTROL POINT #1
N.1,937,229.844-E.984,627.479



CONTROL POINT #2
N.1,937,409.203-E.984,880.390

CURVE NO. 1

$\Delta = 28^\circ 53' 38''$ (LT)
 $D = 8^\circ 40' 05''$
 $R = 661.00'$
 $T = 170.29'$
 $L = 333.34'$
 $E = 21.58'$
 PC STA = 701+21.78
 PI STA = 702+92.07
 PT STA = 704+55.12

CURVE NO. 2

$\Delta = 44^\circ 29' 41''$ (RT)
 $D = 3^\circ 15' 00''$
 $R = 1,763.00'$
 $T = 721.17'$
 $L = 1,369.11'$
 $E = 141.80'$
 PC STA = 451+76.86
 PI STA = 458+98.03
 PT STA = 465+45.97

EXISTING STEARNS ROAD ALIGNMENT DATA

DESCRIPTION	STATION	NORTHING	EASTING
-	449+00.00	1937210.5020	983564.1527
PC	451+76.86	1937215.6102	983840.9653
PI	458+98.03	1937228.9161	984562.0100
PT	465+45.97	1936733.0678	985085.6674
-	471+00.00	1936352.1365	985487.9628

PROPOSED UMBDENSTOCK ROAD ALIGNMENT DATA

DESCRIPTION	STATION	NORTHING	EASTING
BOA	699+99.82	1936996.2537	984725.7023
PC	701+21.78	1937103.0160	984784.6547
PI	702+92.07	1937252.0920	984866.9720
PT	704+55.12	1937422.3853	984867.0103
EOA	710+89.79	1938057.0610	984867.1530

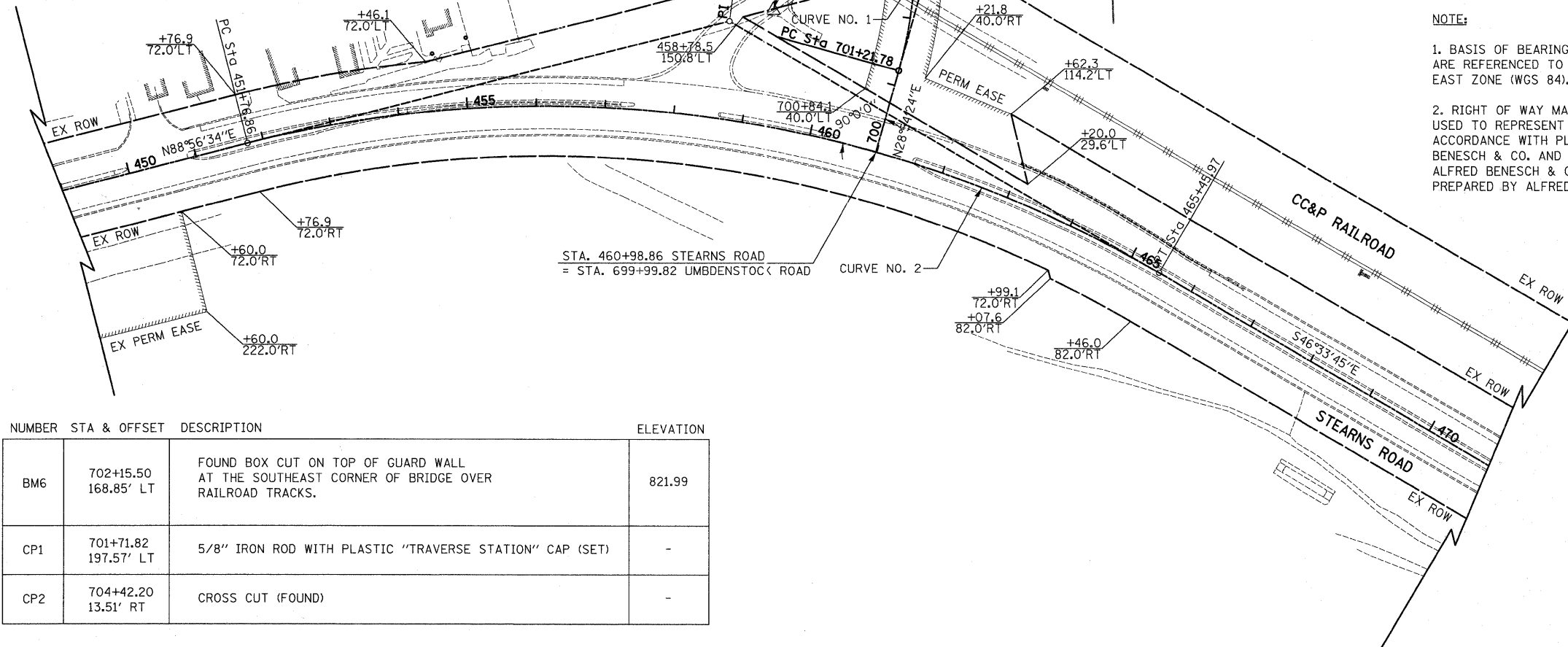
LEGEND:

- BENCHMARK
- CONTROL POINT

- BOA = BEGINNING OF ALIGNMENT
- PC = POINT OF CURVATURE
- PT = POINT OF TANGENT
- PI = POINT OF INTERSECTION
- EOA = END OF ALIGNMENT
- CP = CONTROL POINT
- BM = BENCH MARK

NOTE:

1. BASIS OF BEARINGS: ALL BEARINGS DEPICTED AS MEASURED HEREON ARE REFERENCED TO THE ILLINOIS STATE PLANE COORDINATE SYSTEM, EAST ZONE (WGS 84).
2. RIGHT OF WAY MARKERS AND PERMANENT SURVEY MARKERS SHALL BE USED TO REPRESENT THE RIGHT OF WAY LIMITS AND ALIGNMENT IN ACCORDANCE WITH PLAT OF HIGHWAYS #1ST0145PE PREPARED BY ALFRED BENESCH & CO. AND DATED DECEMBER 6, 2005, #1ST0146PE PREPARED BY ALFRED BENESCH & CO. AND DATED APRIL 10, 2006, AND #1ST0148 PREPARED BY ALFRED BENESCH & CO. AND DATED FEBRUARY 9, 2007.



NUMBER	STA & OFFSET	DESCRIPTION	ELEVATION
BM6	702+15.50 168.85' LT	FOUND BOX CUT ON TOP OF GUARD WALL AT THE SOUTHEAST CORNER OF BRIDGE OVER RAILROAD TRACKS.	821.99
CP1	701+71.82 197.57' LT	5/8" IRON ROD WITH PLASTIC "TRAVERSE STATION" CAP (SET)	-
CP2	704+42.20 13.51' RT	CROSS CUT (FOUND)	-