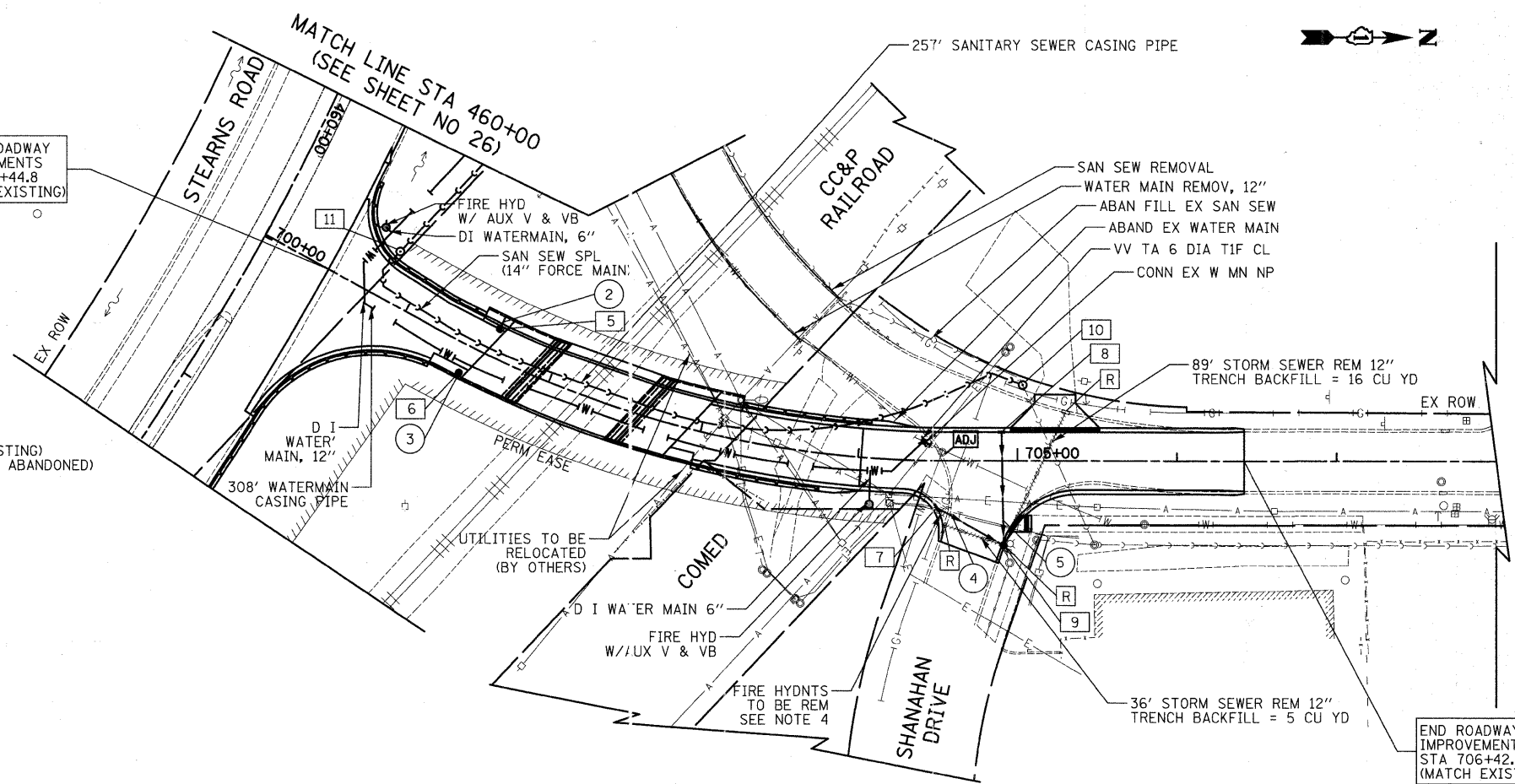


DATE	
BY	
SURVEYED	
PLOTTED	
TEMPLATE	
NOTE BOOK	
AREAS CHECKED	
NO.	

- 5 STA 701+58.0, 18.0' LT
CB TC T20F&G
RIM = 819.09
INV = 814.93 (12" W)
- 6 STA 701+47.0, 18.0' RT
CB TA 4 DIA T20F&G
RIM = 819.19
INV = 811.83 (12" E)
- 7 STA 701+49.5, 29.1' RT
INLETS TA T24F&G
RIM = 816.58
INV = 813.15 (12" NE)
- 8 STA 704+90.0, 18.0' LT
INLETS TA T24F&G
RIM = 816.28
INV = 813.38 (12" E)
- 9 STA 704+91.3, 52.7' RT
CB TA 4 DIA T24F&G
RIM = 815.97
INV = 812.70 (12" SW)
INV = 812.70 (12" W)
INV = 812.6 (EX 12" NE)
- 10 STA 705+03.3, 47.0' LT
MAN TA 6 DIA T1F CL
RIM = 815.52
INV = APPROX. 799.24 (14" S) (MATCH EXISTING)
INV = APPROX. 799.24 (EX 14" SW) (TO BE ABANDONED)
INV = APPROX. 799.24 (EX 14" NE)
- 11 STA 700+71.5, 35.5' LT
AIR RELEASE VALVE MHL
RIM = 822.49
INV = 816.32 (14" W)
INV = 816.32 (14" E)
(SEE NOTE 1)

BEGIN ROADWAY IMPROVEMENTS STA 700+44.8 (MATCH EXISTING)



- 2 9' STORM SEW CL A 1, 12" @ 0.50%
- 3 2' STORM SEW CL A 1, 12" @ 1.00%
- 4 45' STORM SEW CL A 1, 12" @ 1.00%
TRENCH BACKFILL = 7 CU YD
- 5 68' STORM SEW CL A 1, 12" @ 1.00%
TRENCH BACKFILL = 7 CU YD

- NOTE:
- AIR AND VACUUM RELEASE VALVE SHALL BE PLACED AT THE HIGHEST POINT OF THE SANITARY SEWER PROFILE. CONTRACTOR SHALL PROVIDE AN ENCASEMENT FOR VANDAL PROTECTION.
 - PIPES EXPOSED TO THE ATMOSPHERE SHALL BE PROTECTED FROM FREEZING WITH INSULATION AND A HEAT TRACER (SEE DRAINAGE AND UTILITIES GENERAL NOTES AND DETAILS).
 - INSULATION FOR WATERMAIN AND SANITARY SEWER SHALL BE PROVIDED WHERE DEPTH COVER IS LESS THAN 6'.
 - REMOVE EXISTING FIRE HYDRANT AND AUXILIARY VALVE AND DELIVER TO SOUTH ELGIN'S PUBLIC WORKS DEPARTMENT. PLUG FIRE HYDRANT LEAD AT TEE AND PROVIDE THRUST BLOCK.
 - PROPOSED HEAT TRACING SHALL BE SERVICED BY THE SAME COMED METER THAT FEEDS THE EXISTING HEAT TRACING. NO STREET LIGHT SHALL BE FED BY THIS SERVICE AND METER.

END ROADWAY IMPROVEMENTS STA 706+42.0 (MATCH EXISTING)

DATE	
BY	
SURVEYED	
PLOTTED	
TEMPLATE	
NOTE BOOK	
AREAS CHECKED	
NO.	

