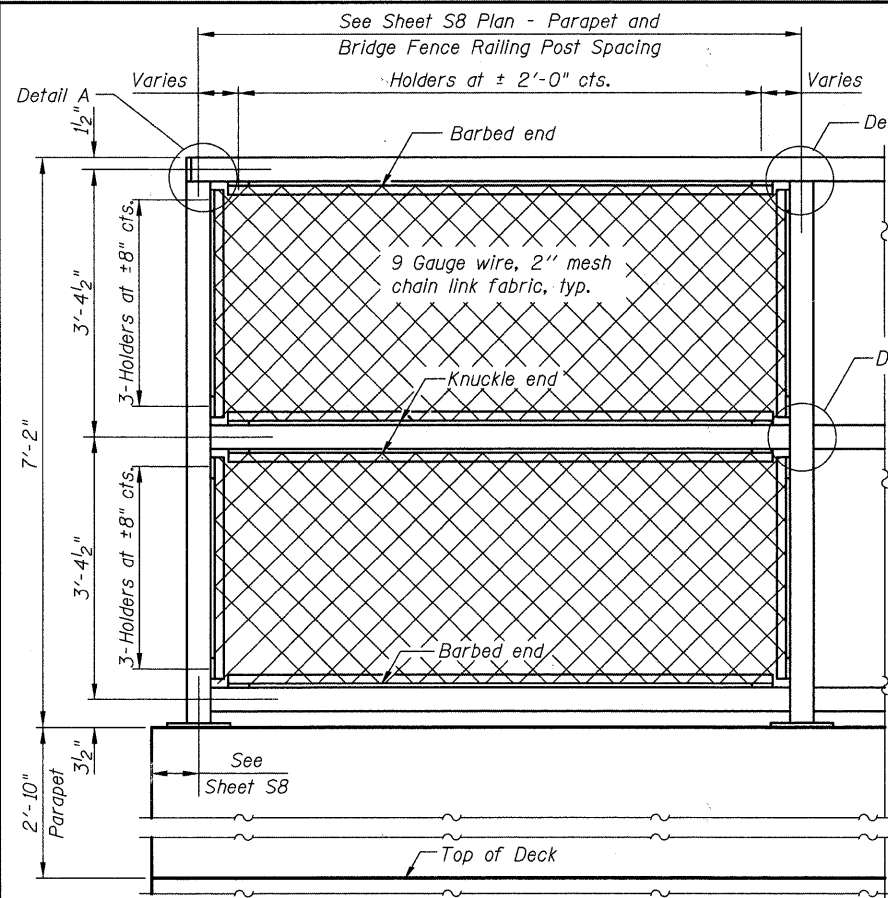
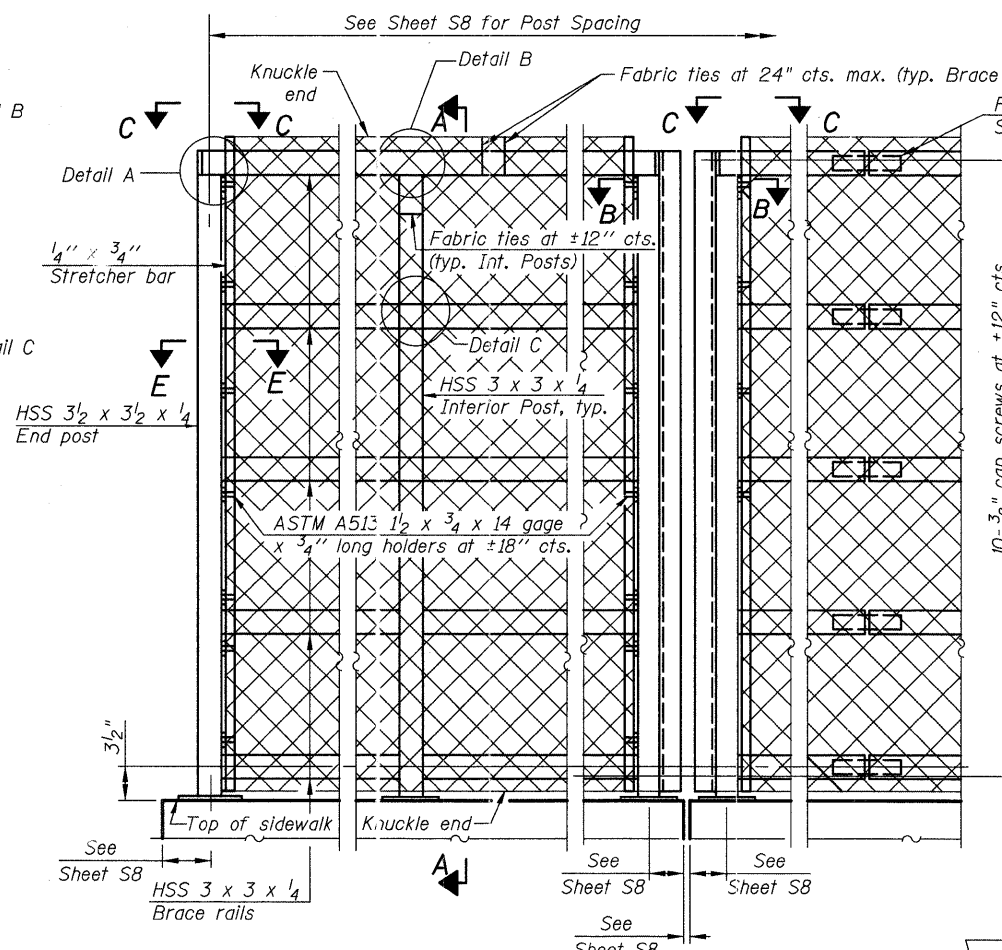


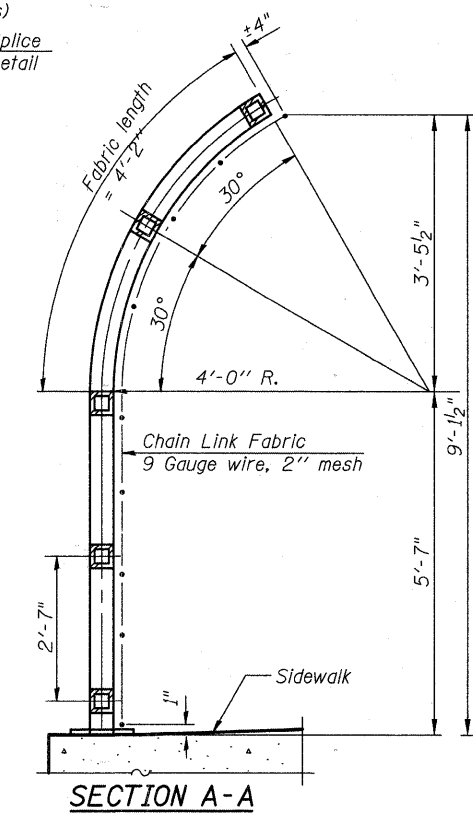
All steel rail elements shall be galvanized according to Article 509.05 of the Standard Specifications.



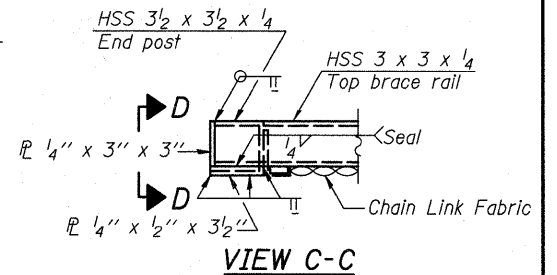
BRIDGE FENCE RAILING - ELEVATION
(Inside Face)



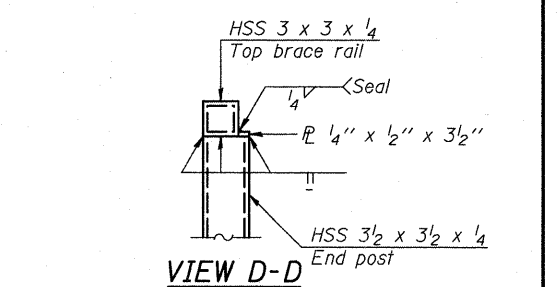
BRIDGE FENCE RAILING (SIDEWALK) - ELEVATION
(Inside Face)



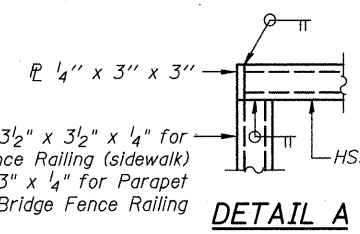
SECTION A-A



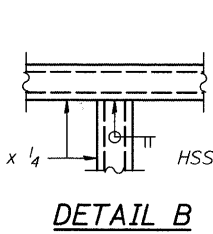
VIEW C-C



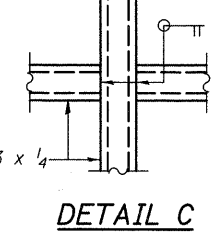
VIEW D-D



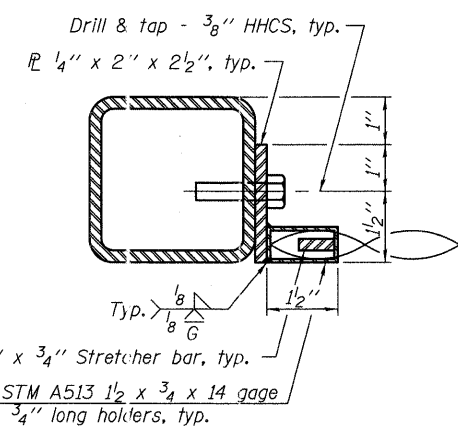
DETAIL A



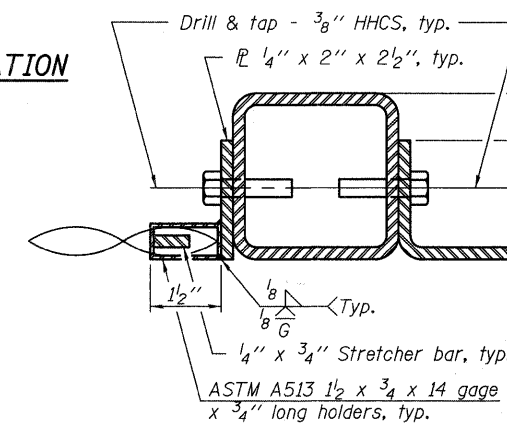
DETAIL B



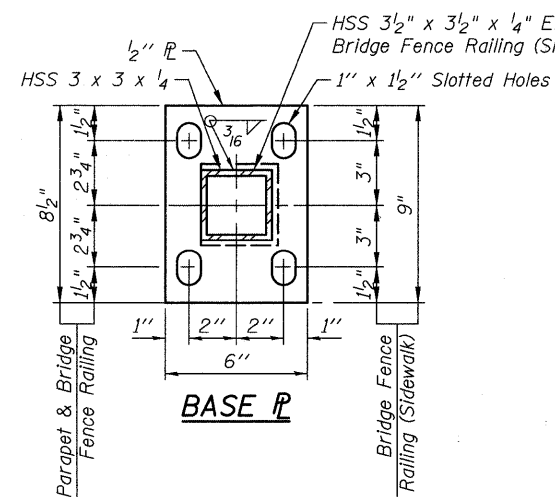
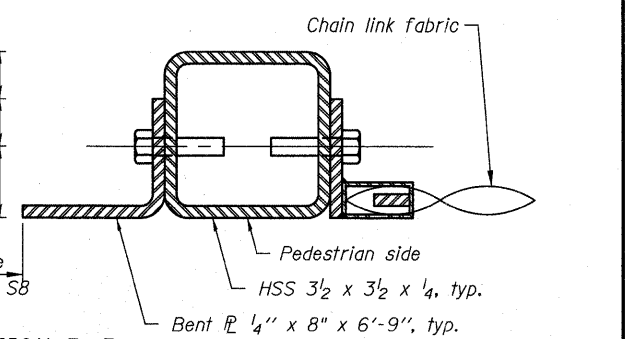
DETAIL C



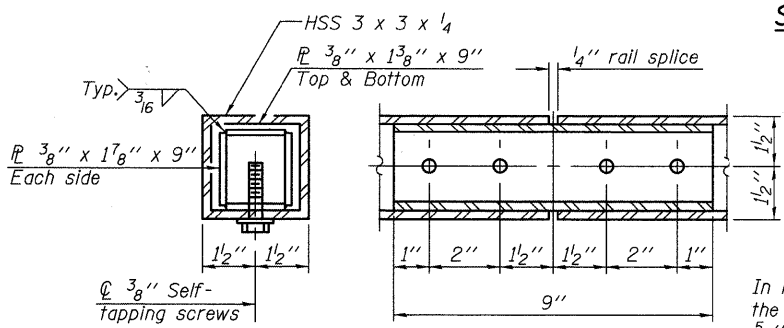
SECTION E-E



SECTION B-B
(At Expansion Joint)

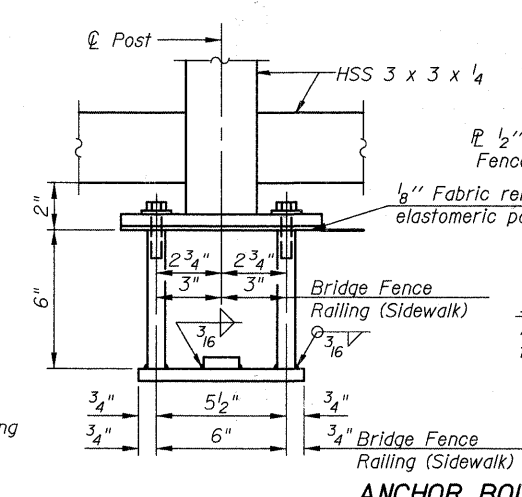


BASE PL



RAIL SPLICE

In lieu of the cast-in-place anchor device shown, the Contractor has the option of drilling and setting 5/8 inch diameter anchor rods according to Article 509.06 of the Standard Specifications. Embedment shall be according to the Manufacturer's specifications.



ANCHOR BOLT DETAILS

J:\2372\cad\struct\08A_Railing_details.dgn 3:20:40 PM 4/7/2011

CIVILTECH
450 E Devon Ave, Suite 300
Itasca, Illinois 60143
Tel: 630.773.3900 Fax: 630.773.3975
www.civiltechinc.com

DESIGNED - D. Atkins	REVISED - 4-11-11
DRAWN - D. Atkins	REVISED -
CHECKED - G. Hatlestad	REVISED -
DATE - March 25, 2011	REVISED -

STATE OF ILLINOIS
DEPARTMENT OF TRANSPORTATION

RAILING DETAILS
UMBENSTOCK ROAD OVER CC&P RR
STRUCTURE NO. 045-3162
SHEET NO. S8A OF S28 SHEETS

F.A.P. RTE. 361	SECTION 06-00214-27-BR	COUNTY KANE	TOTAL SHEETS 87	SHEET NO. 41A
CONTRACT NO. 63595				
FED. ROAD DISTRICT 1 ILLINOIS FED. AID PROJECT				