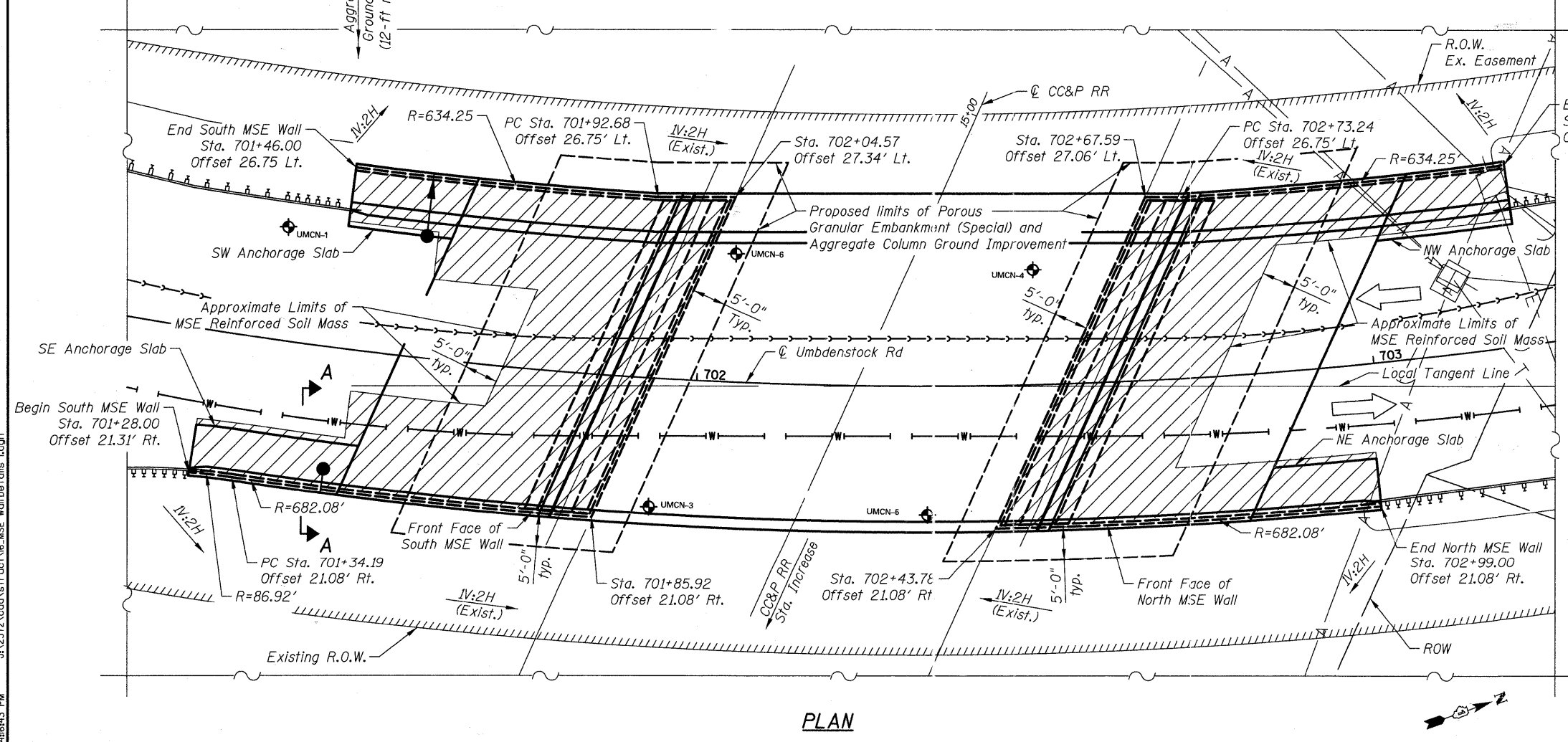


SECTION A-A
(See Section D-D on sheet S20 for Dimensions not shown)

**M.S.E. supplier to design load transfer system to accommodate concrete pipe and catch basin.



PLAN

Notes:
 Panels must be arranged to provide continuous vertical joints for the full height of the wall to accommodate potential differential settlement.
 Exact location of Cast in Place Panels to be determined by Wall Supplier in accordance with Typical Cast In Place Panel Detail.
 Offsets, stations and radii measured from ϕ Umbdenstock Rd. to the Front Face of MSE Wall.
 See sheet S17 for elevation of North Abutment Wall and Bill of Material. C.I.P. Coping and Typical Cast In-Place panels to be included in the cost of Mechanically Stabilized Earth Retaining Wall.
 Neither the construction of the CIP Coping, Anchorage Slabs, Approach Pavements, Roadway Pavement nor Abutments or the Bridge Superstructure shall begin until after the embankment and MSE retaining walls have been in place for 3 months, after which time more than 1 inch of settlement is anticipated to occur, and without prior approval of the Engineer.
 For Frame and Grate type, Catch Basin Type and rim invert elevations see Drainage and Utility plans.

CIVILTECH
 450 E Devon Ave, Suite 300
 Itasca, Illinois 60143
 Tel. 630.773.3900 Fax: 630.773.3975
 www.civiltechinc.com

DESIGNED - D. Atkins	REVISED -
DRAWN - D. Atkins	REVISED -
CHECKED - G. Hultstad	REVISED -
DATE - March 25, 2011	REVISED -

STATE OF ILLINOIS
DEPARTMENT OF TRANSPORTATION

MSE WALL DETAILS I
UMBENSTOCK ROAD OVER CC&P RR
STRUCTURE NO. 045-3162
 SHEET NO. S16 OF S28 SHEETS

F.A.P. RTE. 361	SECTION 06-00214-27-BR	COUNTY KANE	TOTAL SHEETS 87	SHEET NO. 49
CONTRACT NO. 63595				
FED. ROAD DISTRICT 1 ILLINOIS FED. AID PROJECT				