

**SUPERSTRUCTURE
BILL OF MATERIAL**

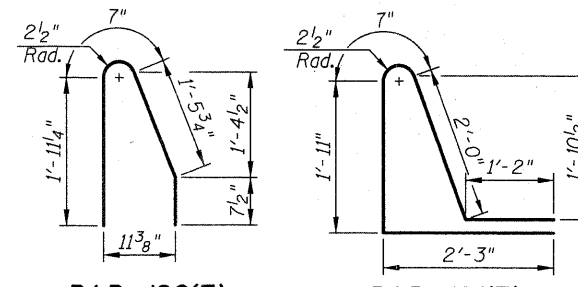
Bar	No.	Size	Length	Shape
a20(E)	33	#6	10'-5"	
a21(E)	2	#6	11'-8"	
a22(E)	3	#6	10'-11"	
a23(E)	2	#6	9'-4"	
a24(E)	41	#6	8'-9"	
a25(E)	2	#6	10'-8"	
a26(E)	2	#6	8'-5"	
a27(E)	2	#6	8'-11"	
a28(E)	3	#6	2'-8"	
a29(E)	3	#6	3'-8"	
a30(E)	15	#5	3'-8"	
a31(E)	2	#5	7'-0"	
a32(E)	41	#5	7'-6"	
a33(E)	2	#5	8'-1"	
a34(E)	2	#5	7'-8"	
a35(E)	33	#5	9'-1"	
a36(E)	2	#5	10'-4"	
a37(E)	5	#5	9'-7"	
b20(E)	10	#5	33'-11"	
b21(E)	8	#5	34'-0"	
b22(E)	10	#5	32'-10"	
b23(E)	32	#5	13'-6"	
b24(E)	1	#5	14'-2"	
b25(E)	1	#5	19'-0"	
b26(E)	1	#5	17'-9"	
b27(E)	1	#5	21'-9"	
d20(E)	40	#5	4'-8"	
d21(E)	43	#5	7'-11"	
d22(E)	83	#5	5'-7"	
e20(E)	4	#4	17'-9"	
e21(E)	4	#4	18'-3"	
e22(E)	1	#8	18'-3"	
e23(E)	4	#4	19'-0"	
e24(E)	4	#4	18'-8"	
e25(E)	1	#8	18'-8"	
e26(E)	4	#4	16'-1"	
e27(E)	4	#4	15'-10"	
e28(E)	1	#8	15'-10"	
e29(E)	4	#4	21'-9"	
e30(E)	4	#4	22'-0"	
e31(E)	1	#8	22'-0"	
Concrete Superstructure		Cu. Yds.	40.0	
Protective Coat		Sq. Yd.	93.0	
Reinforcement Bars, Epoxy Coated		Pound	5,230	

Bars indicated thus 8x2 - #5 etc. indicates 8 lines of bars with 2 length per line

Bar	A
a20(E)	9'-0"
a21(E)	10'-3"
a22(E)	9'-6"
a23(E)	7'-11"
a24(E)	7'-4"
a25(E)	9'-3"
a26(E)	7'-0"
a27(E)	7'-6"
a28(E)	1'-3"

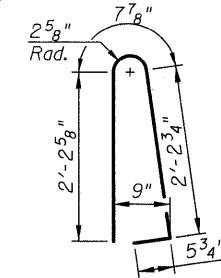
BARS a20(E) THRU a28(E)

- Notes:
1. See sheet S16 and S17 for MSE wall details.
2. See roadway plans for drainage information.

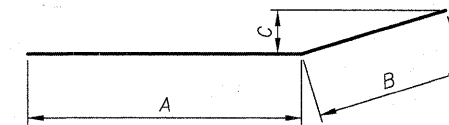


BAR d20(E)

BAR d21(E)

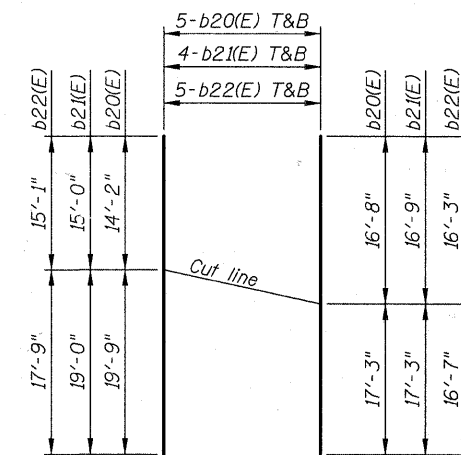


BAR d22(E)



Bar	A	B	C
a32(E)	4'-11"	2'-7"	8 5/8"
a33(E)	5'-6"	2'-7"	8 5/8"
a34(E)	5'-1"	2'-7"	8 5/8"
a35(E)	6'-6"	2'-7"	6 8"
a36(E)	7'-9"	2'-7"	6 8"
a37(E)	7'-0"	2'-7"	6 8"

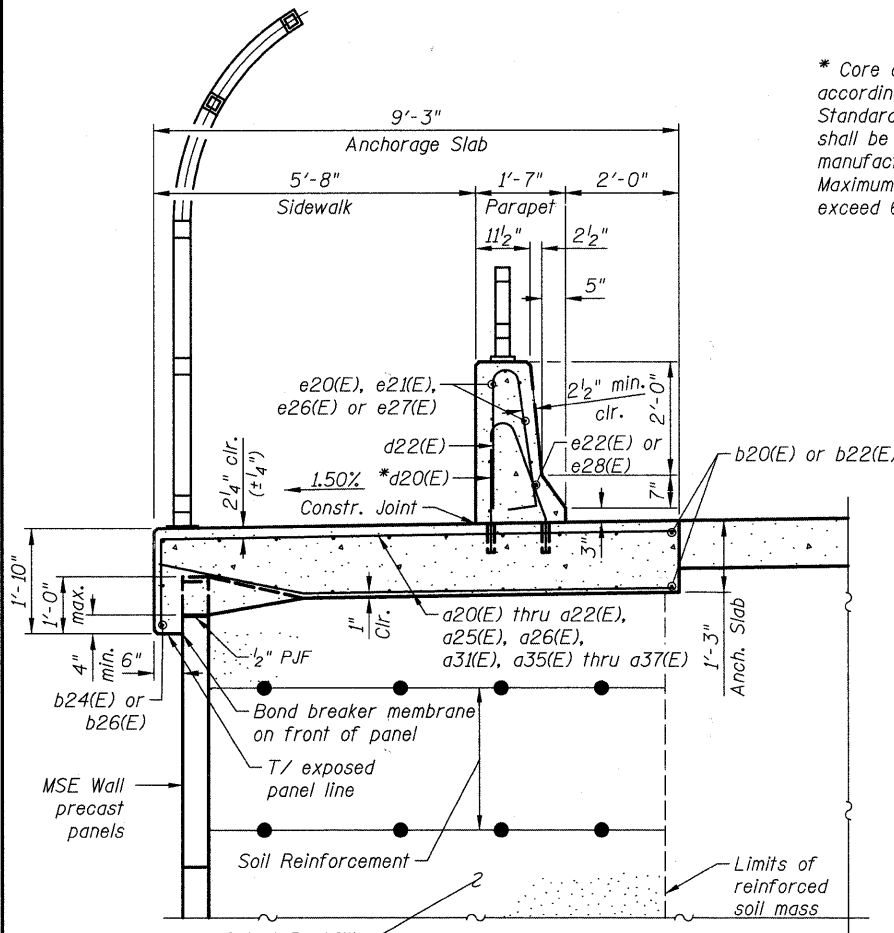
BARS a32(E) THRU a37(E)



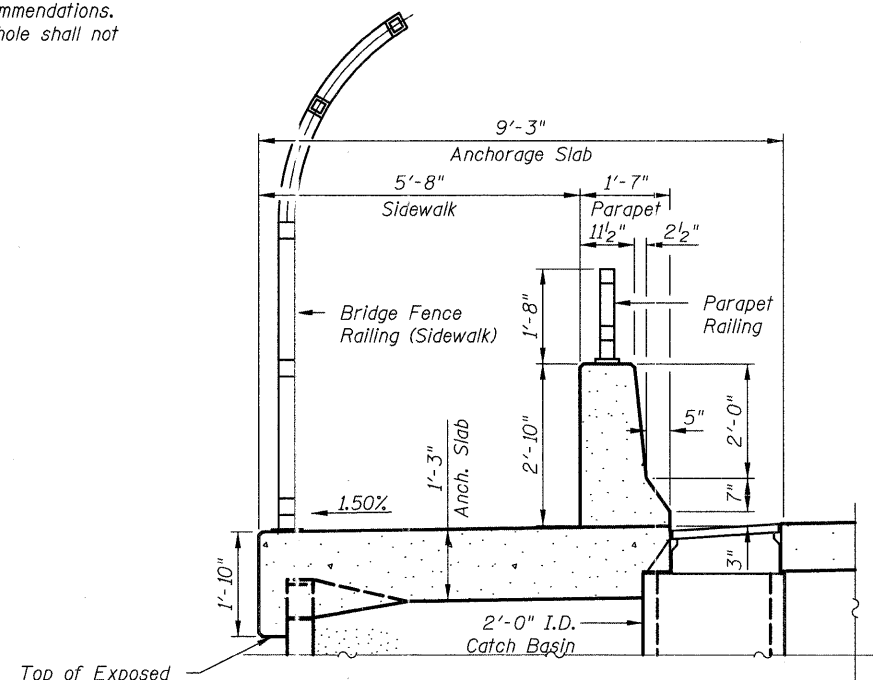
BARS b20(E) THRU b22(E)

T&B indicates top and Bottom

* Core and set #5 d20(E) bars according to Article 509.06 of the Standard Specifications. Cored holes shall be roughened or scored per manufacturer's recommendations. Maximum depth of hole shall not exceed 6".

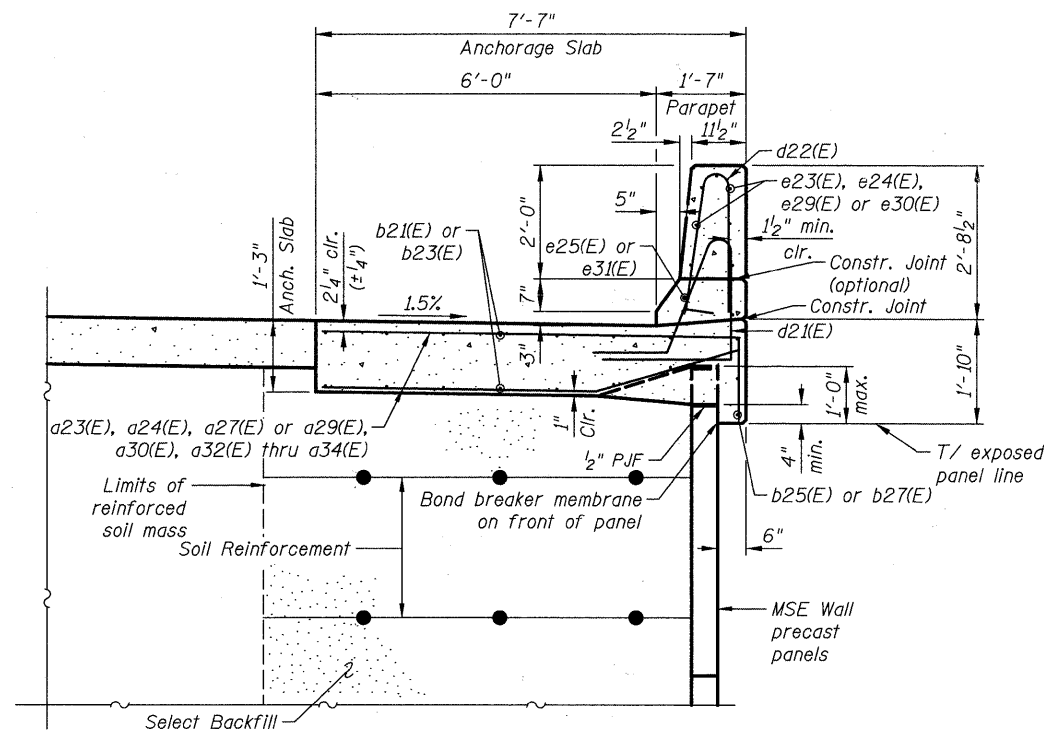


SECTION A-A



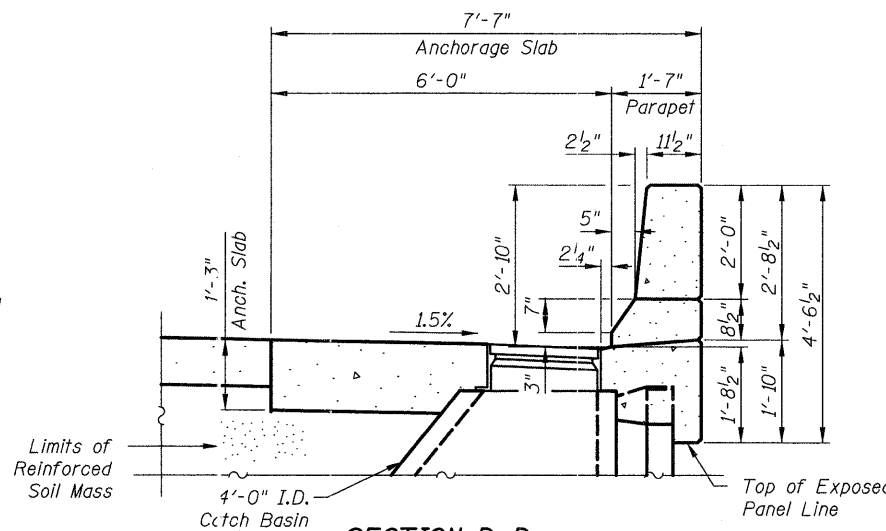
SECTION C-C

(See Section A-A for reinforcement)



SECTION B-B

**M.S.E. supplier to design load transfer system to accommodate concrete pipe and catch basin.



SECTION D-D

(See Section B-B for reinforcement)

**STATE OF ILLINOIS
DEPARTMENT OF TRANSPORTATION**

**ANCHORAGE SLAB DETAILS
UMBENSTOCK ROAD OVER CC&P RR
STRUCTURE NO. 045-3162**

SHEET NO. S20 OF S28 SHEETS

F.A.P. RTE.	SECTION	COUNTY	TOTAL SHEETS	SHEET NO.
361	06-00214-27-BR	KANE	87	53
				CONTRACT NO. 63595
FED. ROAD DISTRICT 1 ILLINOIS FED. AID PROJECT				

DESIGNED - D. Atkins	REVISED - 4-11-11
DRAWN - D. Atkins	REVISED -
CHECKED - G. Hatlestad	REVISED -
DATE - March 25, 2011	REVISED -

CIVILTECH
450 E Devon Ave, Suite 300
Itasca, Illinois 60143
Tel: 630.773.3900 Fax: 630.773.3975
www.civiltechinc.com