

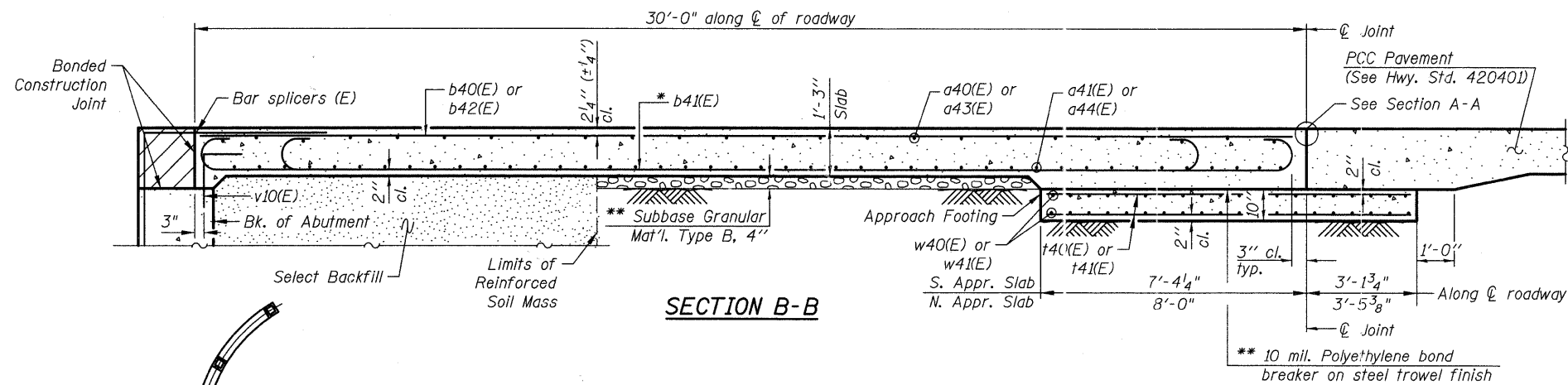
3/20/11 4:47 PM J:\2372\cadd\struct\22.Bridge Appr. Slab Details Ldgn

DESIGNED - D. Atkins	REVISED - 4-11-11
DRAWN - D. Atkins	REVISED -
CHECKED - G. Hatlestad	REVISED -
DATE - March 25, 2011	REVISED -

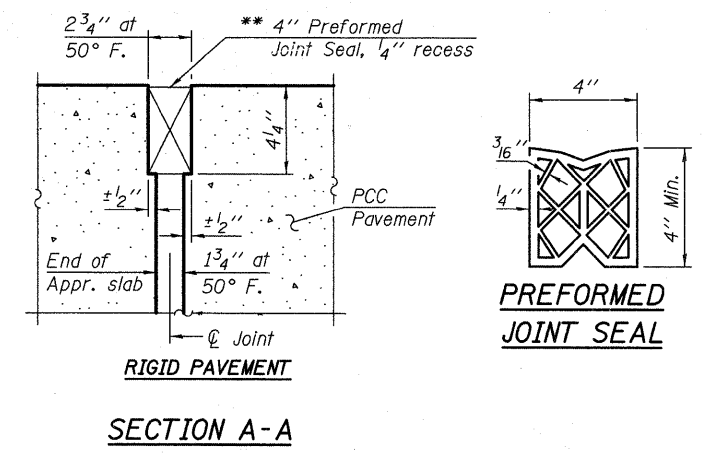
**STATE OF ILLINOIS  
 DEPARTMENT OF TRANSPORTATION**

**BRIDGE APPROACH SLAB DETAILS I  
 UMBDENSTOCK ROAD OVER CC&P RR  
 STRUCTURE NO. 045-3162**

F.A.P. RTE. 361	SECTION 06-00214-27-BR	COUNTY KANE	TOTAL SHEETS 87	SHEET NO. 55
FED. ROAD DISTRICT 1 ILLINOIS FED. AID PROJECT			CONTRACT NO. 63595	

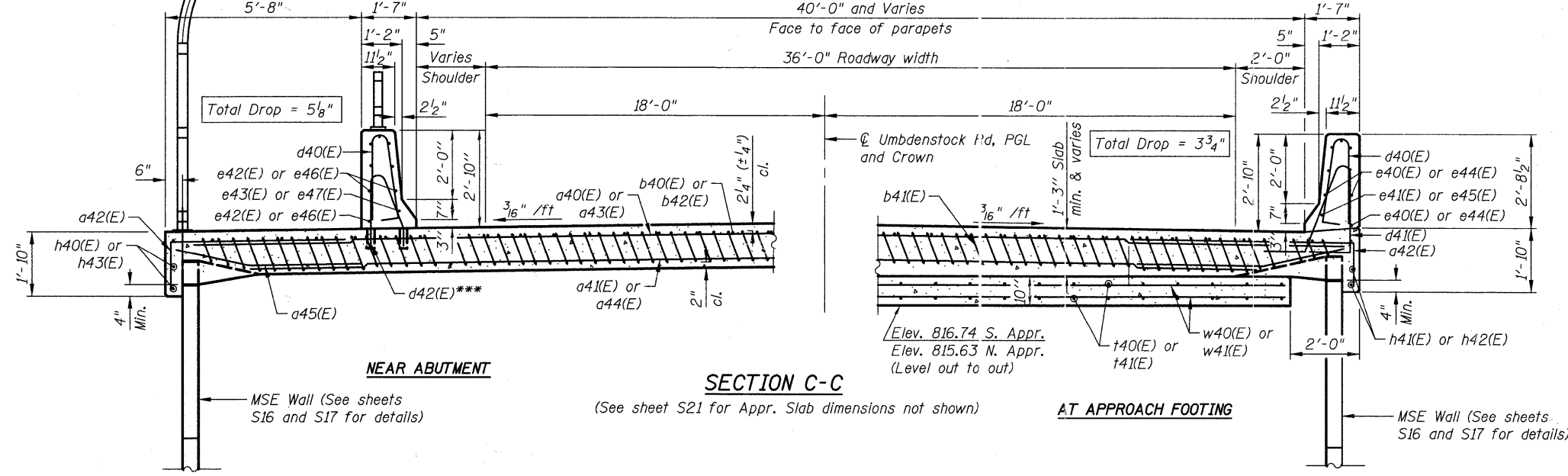


**SECTION B-B**



**RIGID PAVEMENT**

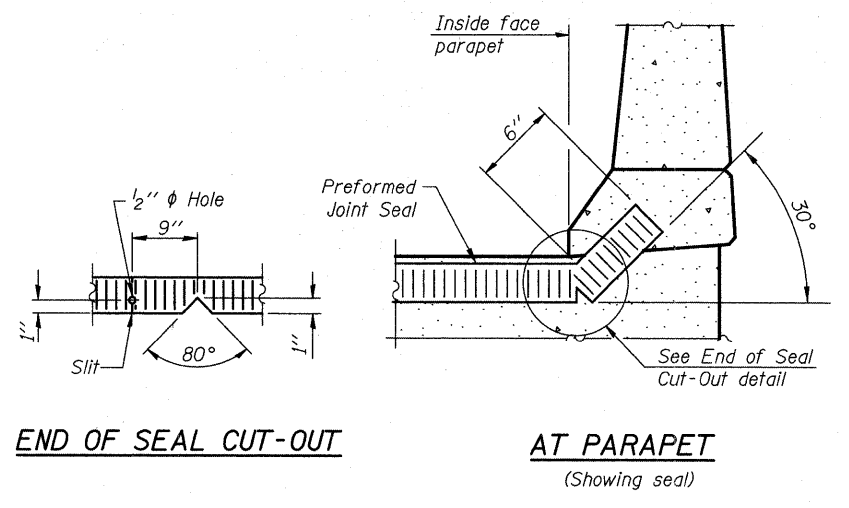
**SECTION A-A**



**SECTION C-C**

**NEAR ABUTMENT**

**AT APPROACH FOOTING**



**END OF SEAL CUT-OUT**

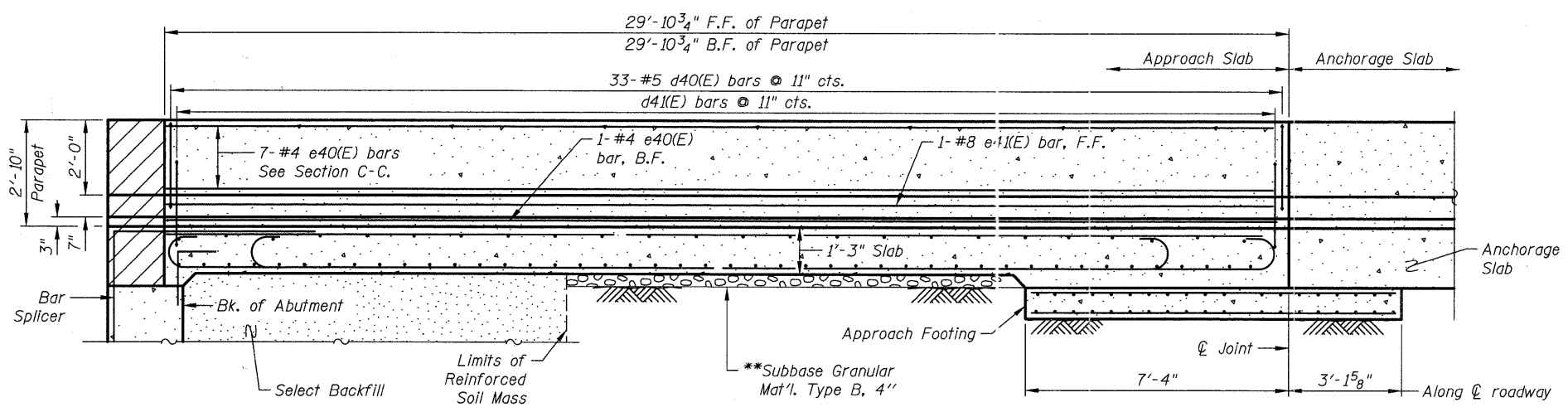
**AT PARAPET**

(Showing seal)

Hatched area to be poured after superstructure false work has been removed. See Abutment sheets S13 thru S15.

- \* Tilt #9 b41(E) bars as required to maintain clearance.
- \*\* Cost Included with Concrete Superstructure.
- \*\*\* Core and set #5 d42(E) bars according to Article 509.06 of the Standard Specifications. Cored holes shall be roughened or scored per manufacturer's recommendations. Maximum depth of the hole shall not exceed 6".

**Notes:**  
 See sheet S23 for Bill of Material  
 For v10(E) bar details, see sheet S13 thru S15  
 The approach footing maximum applied service bearing pressure (Qmax) = 2.0 ksf.  
 For bar splicer details, see sheet S25.  
 For additional parapet details, see sheet S23.



**SECTION D-D**

(See Section B-B for Balance of Information)