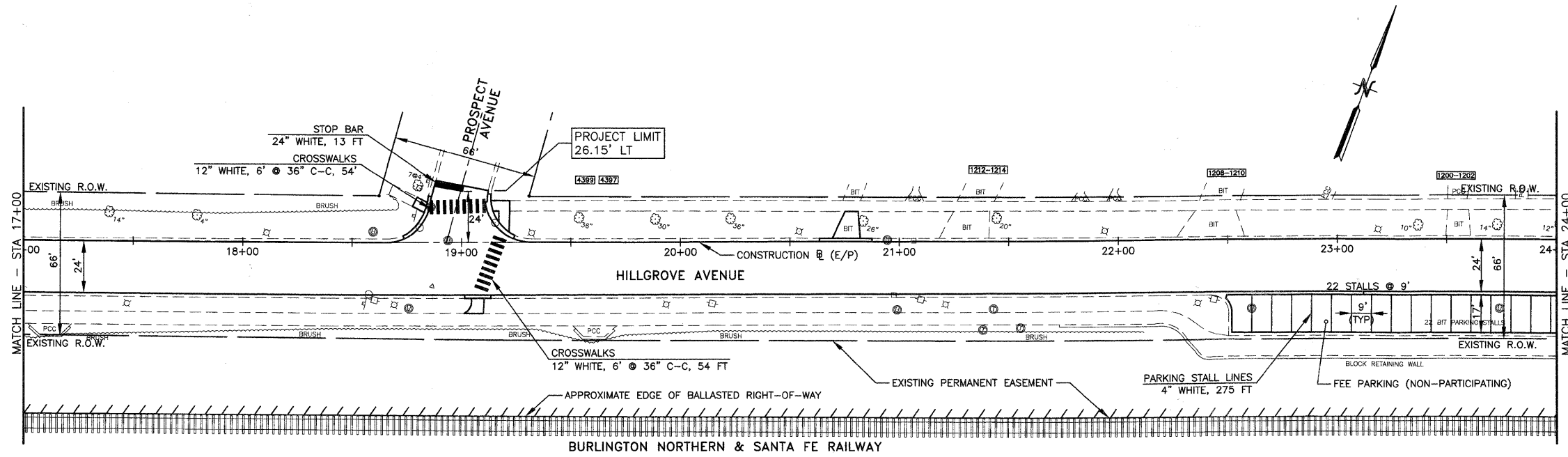
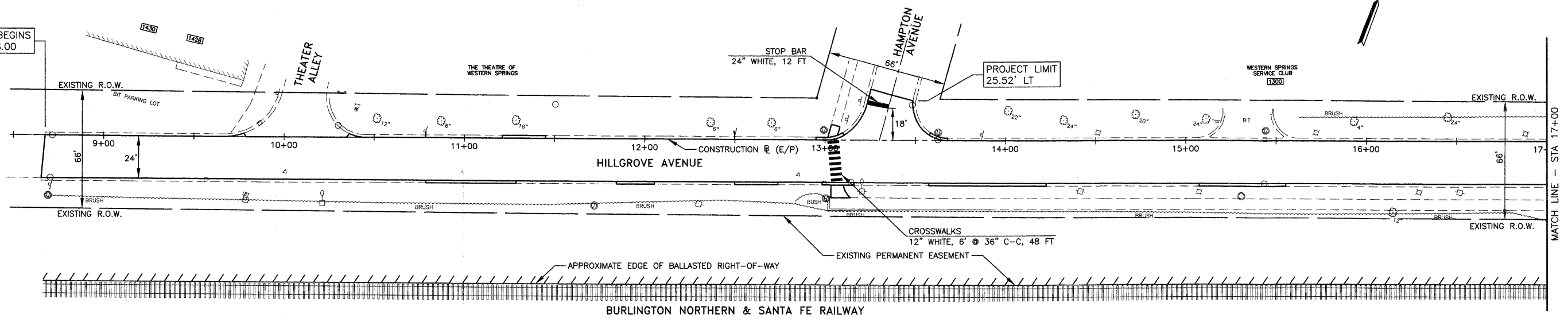


NOTES:
 1. ALL MARKINGS SHALL BE THERMOPLASTIC PAVEMENT MARKINGS, UNLESS OTHERWISE NOTED.

PROJECT BEGINS
 STA. 8+68.00



JJB JAMES J. BENES & ASSOCIATES, INC.
 950 Warrenville Road, Suite 101, Lisle, Illinois 60532
 Tel. (630) 719-7570 • Fax (630) 719-7589

FILE NAME =	USER NAME =	DESIGNED — BDH	REVISED —
		DRAWN — SMP	REVISED —
		CHECKED — BDH	REVISED —
		DATE — 03/01/2011	REVISED —

**STATE OF ILLINOIS
 DEPARTMENT OF TRANSPORTATION**

**PAVEMENT MARKING PLAN
 HILLGROVE AVENUE**
 SCALE: 1"=30' SHEET NO. 9 OF 17 SHEETS STA. 8+50 TO STA. 24+00

F.A.U. RTE.	SECTION	COUNTY	TOTAL SHEETS	SHEET NO.
3782	10-00093-00-RS	COOK	17	9
CONTRACT NO. 63600				ILLINOIS FED. AID PROJECT