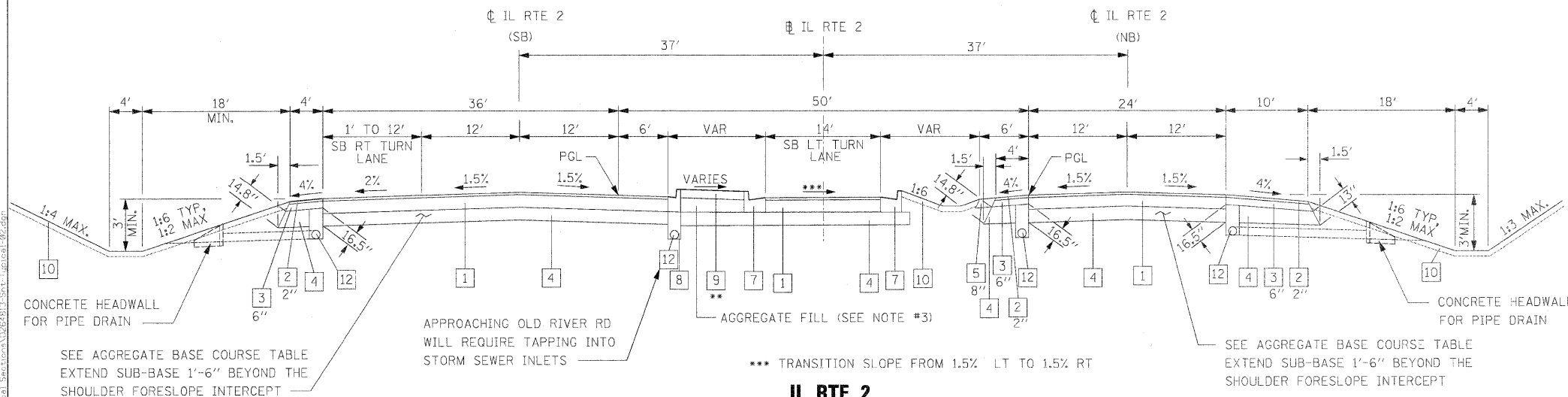


**IL RTE. 2**  
 TYPICAL SECTION  
 SOUTH OF CASTLE DRIVE  
 STA. 714+89 TO 722+13  
 SOUTH OF OLD RIVER ROAD  
 STA. 756+91 TO 764+11  
 SOUTH OF LATHAM ROAD  
 STA. 809+46 TO 816+91

\*\*WHEN WIDTH OF CONCRETE MEDIAN IS LESS THAN 12', CONCRETE MEDIAN WILL BE CONSTRUCTED AND PAID FOR AS CONCRETE MEDIAN TYPE SM-4.24  
 \*\*\* TRANSITION SLOPE FROM 1.5% LT TO 1.5% RT



**IL RTE. 2**  
 TYPICAL SECTION  
 NORTH OF CASTLE DRIVE  
 STA. 722+13 TO 729+36  
 NORTH OF OLD RIVER ROAD  
 STA. 764+11 TO 771+29  
 NORTH OF LATHAM ROAD  
 STA. 816+91 TO 823+79

**PROPOSED:**

- 1 HOT-MIX ASPHALT PAVEMENT (FULL-DEPTH), 12.5" (2" POLYMERIZED HOT-MIX ASPHALT SURFACE COURSE, MIX "D", N70 10.5" HOT-MIX ASPHALT BINDER COURSE, IL-19.0, N70) SEE NOTE #2
- 2 HOT-MIX ASPHALT SURFACE COURSE, MIX "C", N50 SEE NOTE #2
- 3 HOT-MIX ASPHALT SHOULDERS, 6"
- 4 SUB-BASE GRANULAR MATERIAL, TYPE A (SEE NOTE #4)
- 5 AGGREGATE SHOULDERS, TYPE A
- 6 INCIDENTAL HOT-MIX ASPHALT SURFACING, N50
- 7 COMBINATION CONCRETE CURB & GUTTER, TYPE M-4.24
- 8 COMBINATION CONCRETE CURB & GUTTER, TYPE M-4.06
- 9 CONCRETE MEDIAN SURFACE, 4" (SEE NOTE #3)
- 10 TOPSOIL FURNISH AND PLACE, 6" OR 12" (SEE NOTE #5)
- 11 AGGREGATE BASE COURSE, TYPE B (FOR DRIVEWAYS)
- 12 PIPE UNDERDRAIN, 4" (SEE STANDARD DETAIL SUBSURFACE DRAINS)
- 13 AGGREGATE BASE COURSE, TYPE A (SEE NOTE #4)

**NOTES:**

1. SEE PLAN SHEETS FOR ACTUAL LOCATION OF PROPOSED RIGHT OF WAY, AND PROPOSED ACCESS CONTROL LIMITS.
2. SEE SHEET TYPICAL SECTIONS 1 FOR BITUMINOUS MIXTURE REQUIREMENTS AND HOT-MIX ASPHALT LIFTS THICKNESS.
3. AGGREGATE FILL SHALL CONFORM TO ARTICLE 606.09, AND SHALL BE INCLUDED IN THE COST OF CONCRETE MEDIAN SURFACE, 4 INCH.
4. SUB-BASE GRANULAR MATERIAL IS 12" ON IL 2 AND LATHAM ROAD. AGGREGATE BASE COURSE IS 15" ON FRONTAGE ROADS UNLESS OTHERWISE NOTED. SEE TYPICAL SECTION 4 FOR TABLE "IL 2 VARIABLE AGGREGATE BASE COURSE, TYPE A" AND FOR LOCATION OF GEOTECHNICAL FABRIC FOR GROUND STABILIZATION.
5. TOPSOIL, IS 6" UNLESS OTHERWISE SHOWN. SEE SHEET TYPICAL SECTION 4 FOR TABLE "12" TOPSOIL APPLICATION AREAS".

I:\projects\77-2-2\77-2B-1\Drawings\Struct\77-2B-1-09.dwg  
 USER: thompson  
 PLOT DATE: 4/7/2011

USER NAME = thompson	DESIGNED STS/GC	REVISED -
PLDT SCALE = 1/2" = 10'-0" FT / IN.	DRAWN RDT	REVISED -
PLOT DATE = 4/7/2011	CHECKED GC	REVISED -
	DATE 01-14-11	REVISED -

**STATE OF ILLINOIS**  
**DEPARTMENT OF TRANSPORTATION**

ILLINOIS ROUTE 2  
 TYPICAL SECTIONS 2

F.A.P. RTE. 734	SECTION 77-2-2 & 77-2B-1	COUNTY WINNEBAGO	TOTAL SHEETS 530	SHEET NO. 40
SCALE: N.T.S.		SHEET NO. 40 OF 530 SHEETS		STA. TO STA.
FED. ROAD DIST. NO.		ILLINOIS FED. AID PROJECT		

CONTRACT NO. 64813