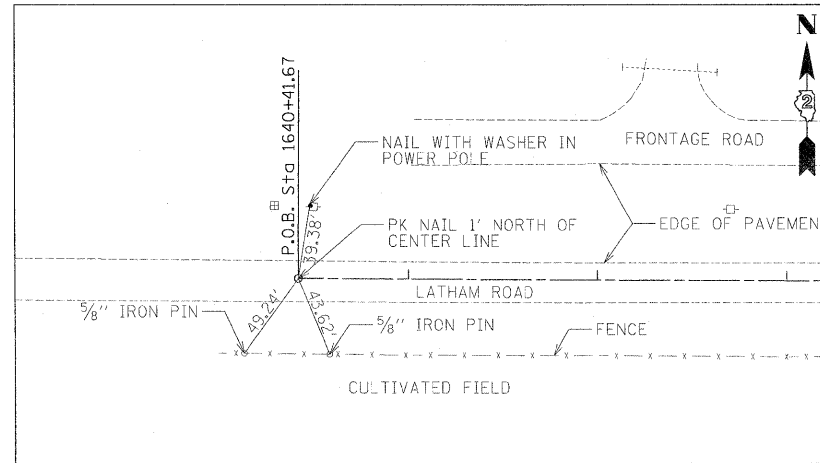
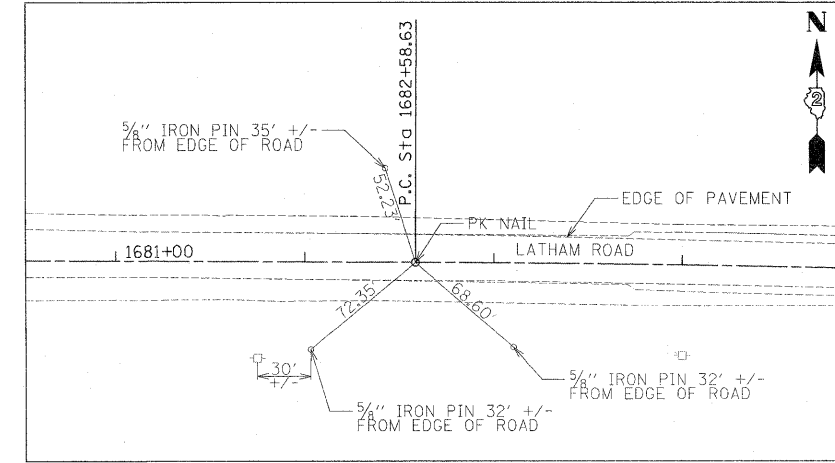


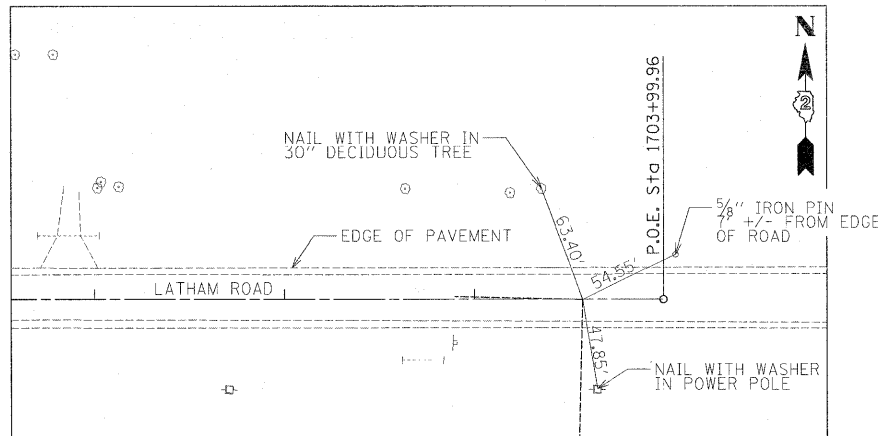
Centerline Swing Tie
PK Nail POINT NO. 727
Sta 1356+63.28
N 2073383.8686
E 2591864.1738
P.O.E. OLD RIVER ROAD



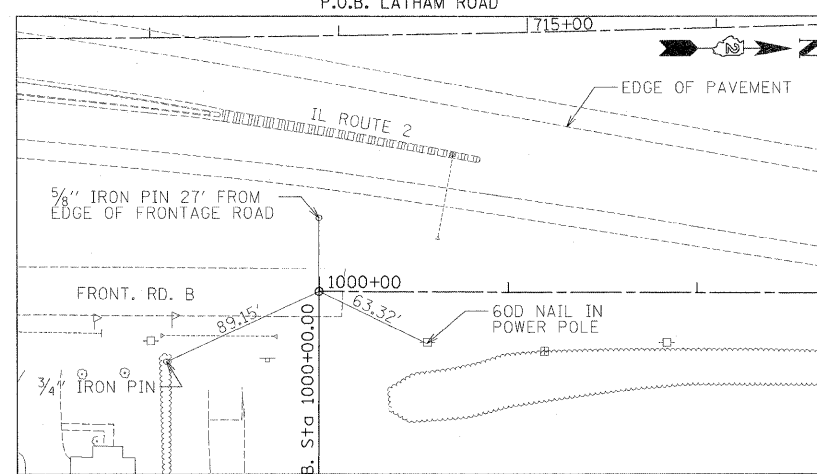
Centerline Swing Tie
PK Nail POINT NO. 722
Sta 1640+41.67
N 2078566.2170
E 2587305.5310
P.O.B. LATHAM ROAD



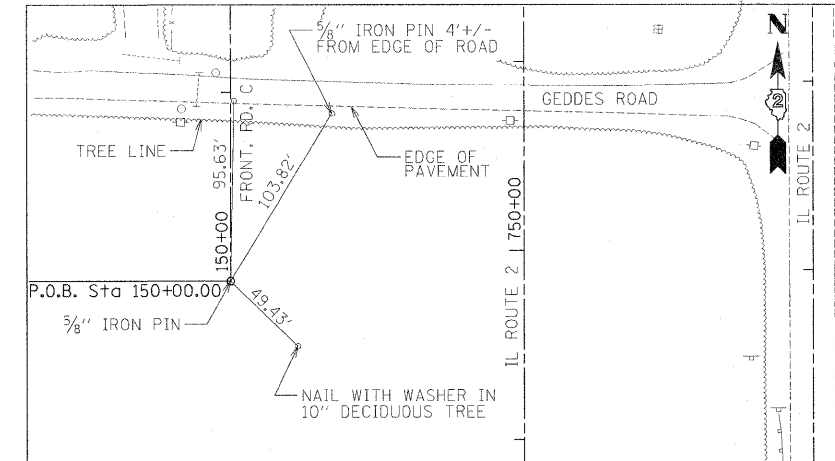
Centerline Swing Tie
PK Nail POINT NO. 723
Sta 1682+58.63
N 2078648.5518
E 2591521.6878
P.C. LATHAM ROAD



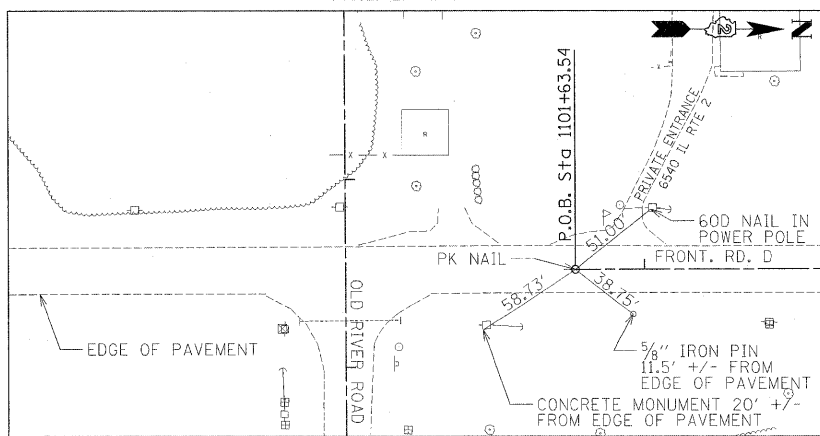
Centerline Swing Tie
PK Nail POINT NO. 724
Sta 1703+57.27
N 2078676.1450
E 2593619.9800
P.O.E. LATHAM ROAD



Centerline Swing Tie
PK Nail POINT NO. 614
Sta 1000+00
N 2068334.9850
E 2590972.0890
P.O.B. FRONTAGE ROAD B



Centerline Swing Tie
5/8" Iron Pin POINT NO. 626
Sta 150+00
N 2071920.6720
E 2590580.4860
P.O.B. FRONTAGE ROAD C



Centerline Swing Tie
PK Nail POINT NO. 637
Sta 1101+63.54
N 2073476.9380
E 2590845.9310
P.O.B. FRONTAGE ROAD D

P.C. = POINT OF CURVATURE
P.I. = POINT OF INTERSECTION
P.T. = POINT OF TANGENCY
P.O.B. = POINT OF BEGINNING
P.O.E. = POINT OF ENDING

USER NAME = zulkawsd	DESIGNED STS/GC	REVISED -
DRAWN RDT	CHECKED CC	REVISED -
PLLOT SCALE = 50.0000 FT / IN.	DATE 01-14-11	REVISED -
PLLOT DATE = 2/2/2011		

**STATE OF ILLINOIS
DEPARTMENT OF TRANSPORTATION**

ILLINOIS ROUTE 2	
ALIGNMENT TIES (LATHAM, OLD RIVER FRONTAGE ROADS)	
SCALE: 1"=50'	SHEET NO. 51 OF 530 SHEETS
STA.	TO STA.

F.A.P. RTE. 734	SECTION 77-2-2 & 77-2B-1	COUNTY WINNEBAGO	TOTAL SHEETS 530	SHEET NO. 51
CONTRACT NO. 64813				
FED. ROAD DIST. NO. ILLINOIS FED. AID PROJECT				

I:\projects\12584\segment_1\sheet51.dwg 02/02/2011 10:18:05 am