

KEY

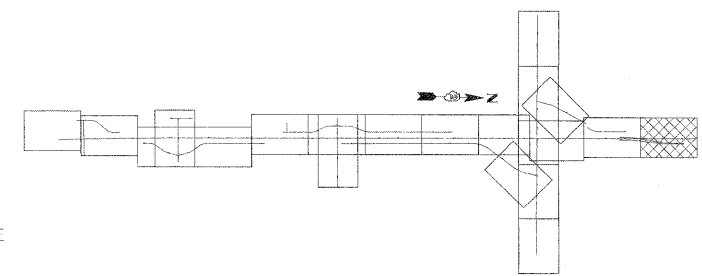
- 1 HOT-MIX ASPHALT PAVEMENT (FULL-DEPTH), 12.5"
SEE NOTE #3
- 2 2" HOT-MIX ASPHALT SURFACE COURSE, MIX "D", N70
10.5" HOT-MIX ASPHALT BINDER COURSE, IL-19.0, N70
- 3 HOT-MIX ASPHALT SHOULDERS
- 4 SUB-BASE GRANULAR MATERIAL, TYPE A
- 5 AGGREGATE SHOULDERS, TYPE A
- 6 INCIDENTAL HOT-MIX ASPHALT SURFACING
(2" AT DRIVEWAYS)
- 7 COMBINATION CONCRETE CURB & GUTTER, TYPE M-4.24
- 8 COMBINATION CONCRETE CURB & GUTTER, TYPE M-4.06
- 9 CONCRETE MEDIAN SURFACE, 4" OR CONCRETE MEDIAN, TYPE SM-4.24
- 10 TOPSOIL FURNISH AND PLACE, 6" OR 12"
- 11 AGGREGATE BASE COURSE, TYPE B
- 12 PIPE UNDERDRAIN, 4"
- 13 AGGREGATE BASE COURSE, TYPE A (SEE SCHEDULE FOR VARIABLE THICKNESS AREAS)

LEGEND

- HOT-MIX ASPHALT DRIVEWAY
- AGGREGATE DRIVEWAY (AGGREGATE BASE COURSE, TYPE B, 8")
- HOT-MIX ASPHALT SURFACE COURSE OVER EX. PAVEMENT
- * STEEL PLATE BEAM GUARDRAIL, TYPE A
- ** TRAFFIC BARRIER TERMINAL TYPE 1 SPECIAL (TANGENT)
- *** TRAFFIC BARRIER TERMINAL TYPE 6
- **** TRAFFIC BARRIER TERMINAL TYPE 5

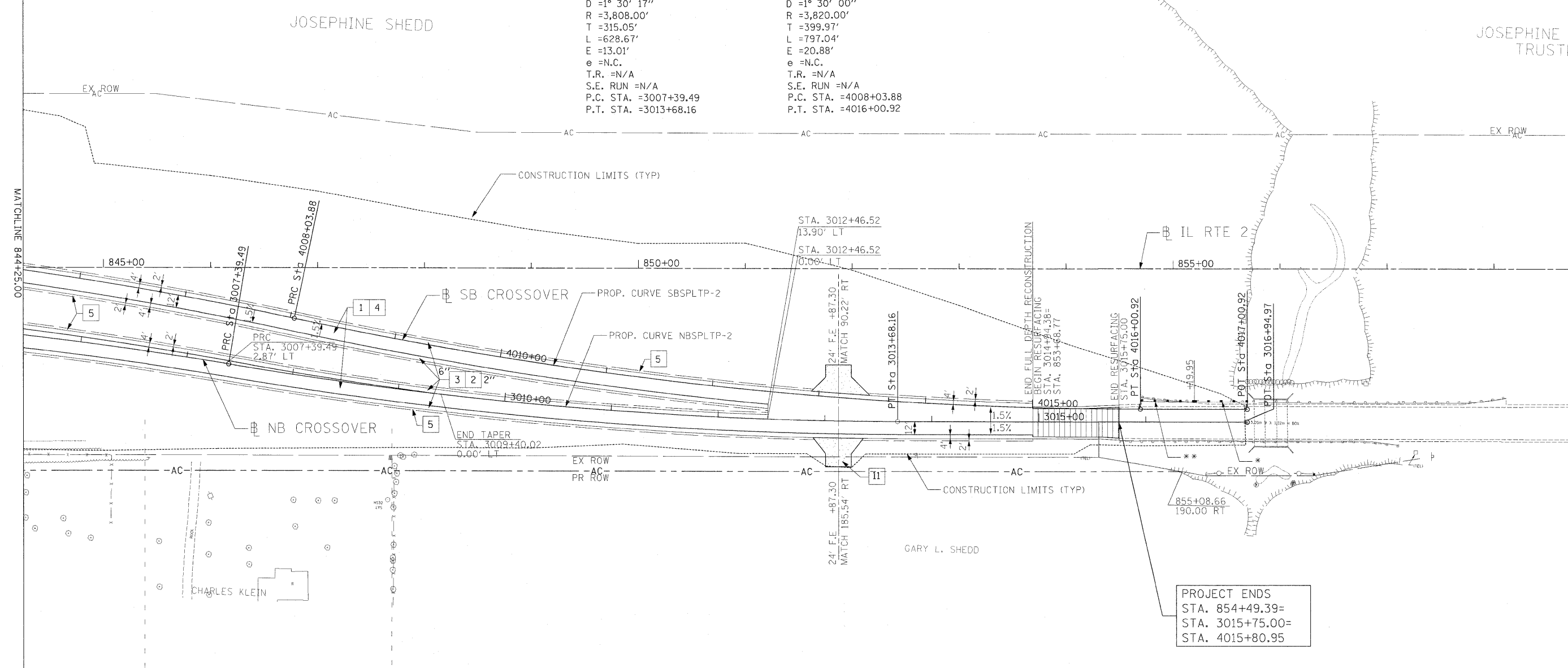
NOTES

1. DRIVEWAYS ARE AT 90° ANGLE TO C ROADWAY UNLESS OTHERWISE SHOWN.
2. ALL DIMENSIONS SHOWN EOP-TO-EOP UNLESS OTHERWISE NOTED.
3. PROPOSED HOT-MIX ASPHALT SHOULDERS IN AREA OF RETURNS AND ADJACENT TO RIGHT-TURN LANE TO BE 4.0' IN WIDTH.
4. LAYOUT OF ALL DRIVEWAYS AND MAILBOX RETURNS, AS WELL AS MAILBOX TURNOUTS SHALL COMPLY WITH ILLINOIS DISTRICT 2 STANDARD 20.1
5. REFER TO HORIZONTAL ALIGNMENT SHEETS FOR ALL ALIGNMENT INFORMATION.
6. SEE DRAINAGE DETAIL SHEETS AND CULVERT PLANS FOR RELATED DRAINAGE ITEMS.
7. CORNER ISLANDS TO BE CONSTRUCTED IN ACCORDANCE WITH HIGHWAY STD. 606301 (PC CORNER ISLANDS & MEDIANS)
8. SEE TYPICAL SECTIONS FOR WOVEN WIRE FENCE LOCATIONS ALONG ACCESS CONTROL (AC).
9. EAST FRONTAGE RD. BASELINE (B) DOES NOT REFLECT THE EXISTING CROWLINE OF THE ROAD. IT PROVIDES A BASELINE FOR REFERENCE PURPOSES ONLY.



PROP. CURVESBPLTP-2
 PI STA. =3010+54.54
 $\Delta = 9^\circ 27' 32''$ (LT)
 $D = 1^\circ 30' 17''$
 $R = 3,808.00'$
 $T = 315.05'$
 $L = 628.67'$
 $E = 13.01'$
 $e = \text{N.C.}$
 T.R. = N/A
 S.E. RUN = N/A
 P.C. STA. = 3007+39.49
 P.T. STA. = 3013+68.16

PROP. CURVESBPLTP-2
 PI STA. =4012+03.85
 $\Delta = 11^\circ 57' 17''$ (LT)
 $D = 1^\circ 30' 00''$
 $R = 3,820.00'$
 $T = 399.97'$
 $L = 797.04'$
 $E = 20.88'$
 $e = \text{N.C.}$
 T.R. = N/A
 S.E. RUN = N/A
 P.C. STA. = 4008+03.88
 P.T. STA. = 4016+00.92



PROJECT ENDS
 STA. 854+49.39=
 STA. 3015+75.00=
 STA. 4015+80.95

USER NAME = zulkowd	DESIGNED STS/GC	REVISED -
DRAWN RDT	CHECKED GC	REVISED -
PLOT SCALE = 50,000 FT / IN.	DATE 01-14-11	REVISED -
PLOT DATE = 2/2/2011		

**STATE OF ILLINOIS
 DEPARTMENT OF TRANSPORTATION**

ILLINOIS ROUTE 2 PLAN 12 STA 844+25 TO 856+50	
SCALE: 1"=50'	SHEET NO. 84 OF 530 SHEETS
STA.	TO STA.

F.A.P. RTE.	SECTION	COUNTY	TOTAL SHEETS	SHEET NO.
734	77-2-2 & 77-2B-1	WINNEBAGO	530	84
CONTRACT NO. 64813				
FED. ROAD DIST. NO.		ILLINOIS FED. AID PROJECT		