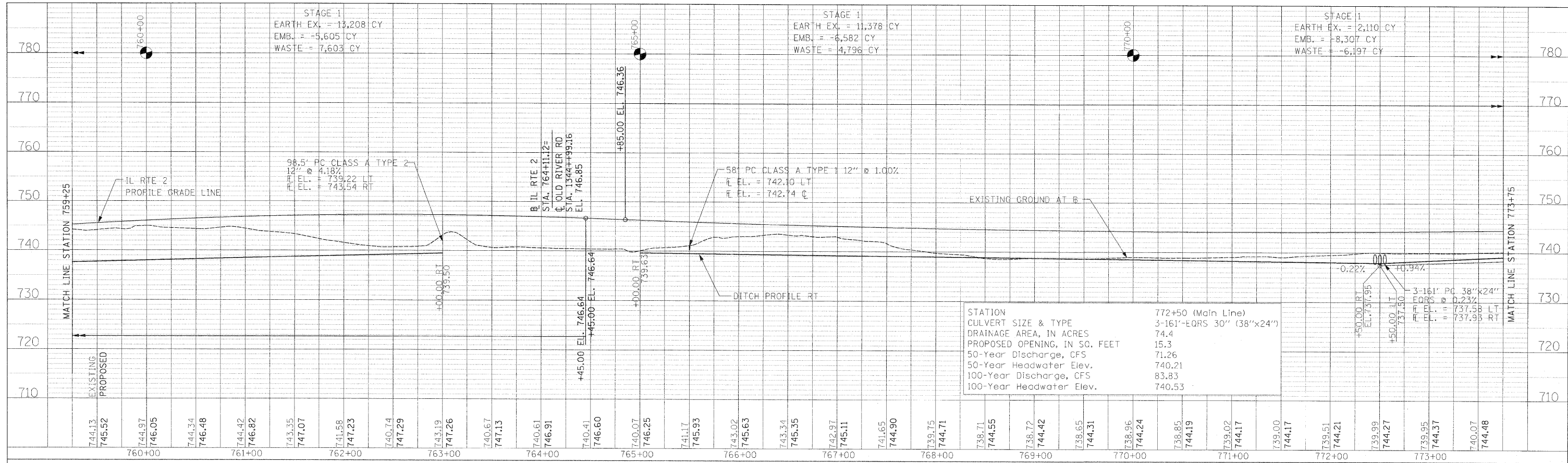
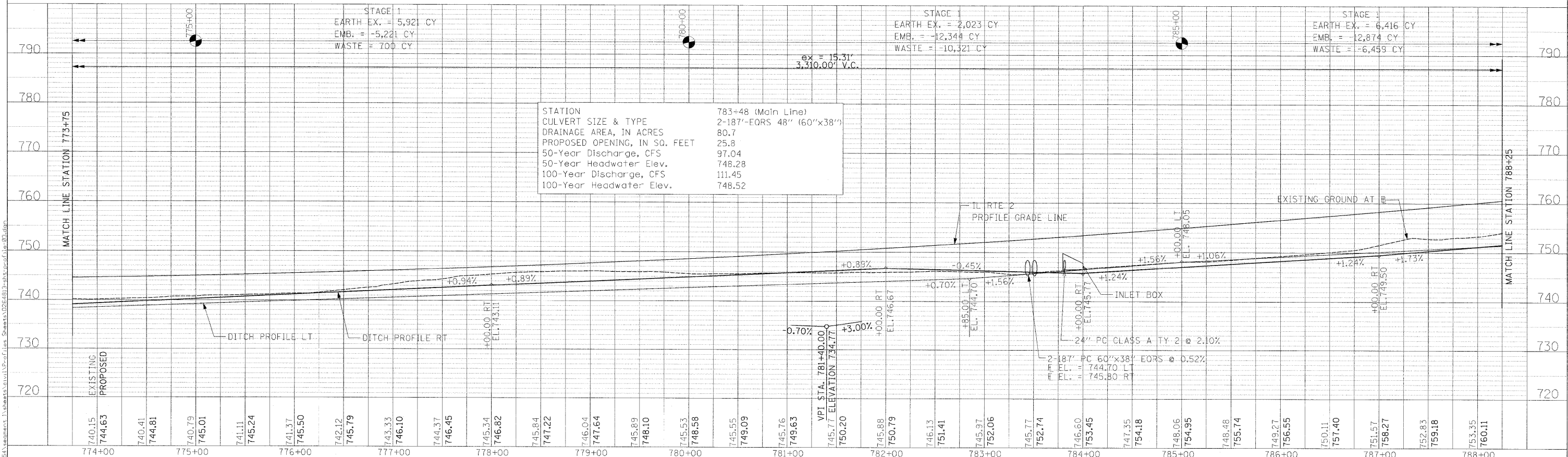


PLAN	SURVEYED	BY	DATE
NOTE BOOK	ALIGNED CHECKED		
NO.	FILE NAME		



STATION	772+50 (Main Line)
CULVERT SIZE & TYPE	3-161'-EQRS 30" (38"x24")
DRAINAGE AREA, IN ACRES	74.4
PROPOSED OPENING, IN SQ. FEET	15.3
50-Year Discharge, CFS	71.26
50-Year Headwater Elev.	740.21
100-Year Discharge, CFS	83.83
100-Year Headwater Elev.	740.53

PROFILE	SURVEYED	BY	DATE
NOTE BOOK	GRADES CHECKED		
NO.	STRUCTURE NOTATION		



STATION	783+48 (Main Line)
CULVERT SIZE & TYPE	2-187'-EORS 48" (60"x38")
DRAINAGE AREA, IN ACRES	80.7
PROPOSED OPENING, IN SQ. FEET	25.8
50-Year Discharge, CFS	97.04
50-Year Headwater Elev.	748.28
100-Year Discharge, CFS	111.45
100-Year Headwater Elev.	748.52

2-187' PC 60"x38" EORS @ 0.52%
F.E.L. = 744.70 LT
F.E.L. = 745.80 RT

USER NAME = zulkowad	DESIGNED RDT/GC	REVISED -	STATE OF ILLINOIS DEPARTMENT OF TRANSPORTATION	IL ROUTE 2 PROFILE SHEET 3		F.A.P. RTE. 734	SECTION 77-2-1 & 77-2B-2	COUNTY WINNEBAGO	TOTAL SHEETS 530	SHEET NO. 96	
PLOT SCALE = 50.0000 FT / IN.	CHECKED GC	REVISED -		SCALE: H=1:50, V=1:10	SHEET NO. 96 OF 530 SHEETS	STA. 759+25 TO STA. 788+25	CONTRACT NO. 64813				
PLOT DATE = 2/2/2011	DATE 01-14-11	REVISED -		ILLINOIS FED. AID PROJECT							