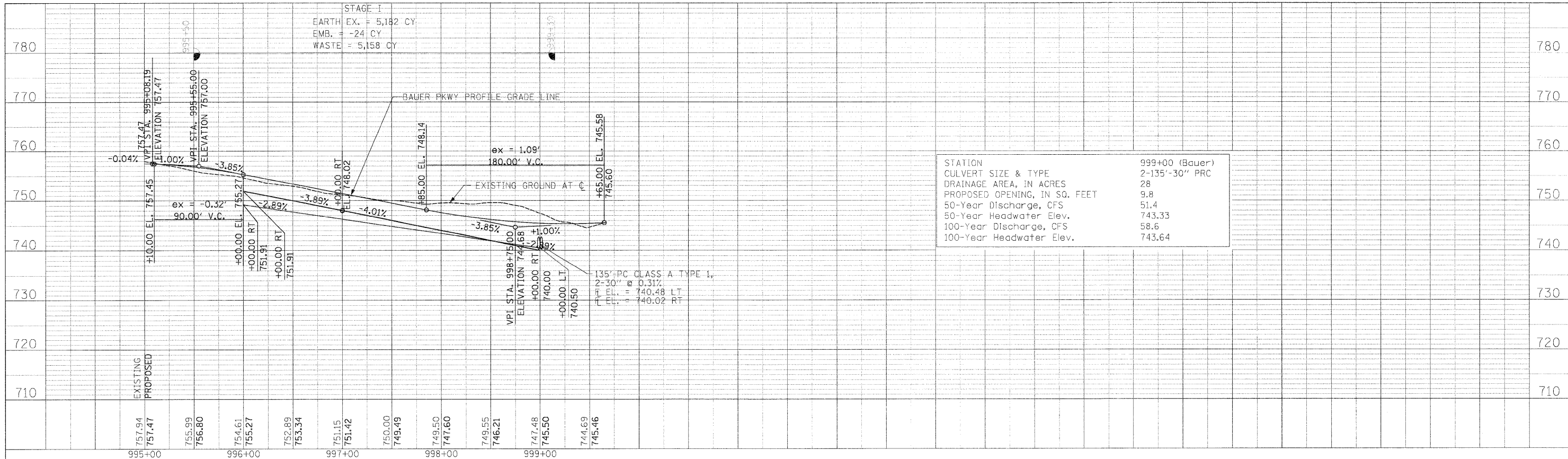
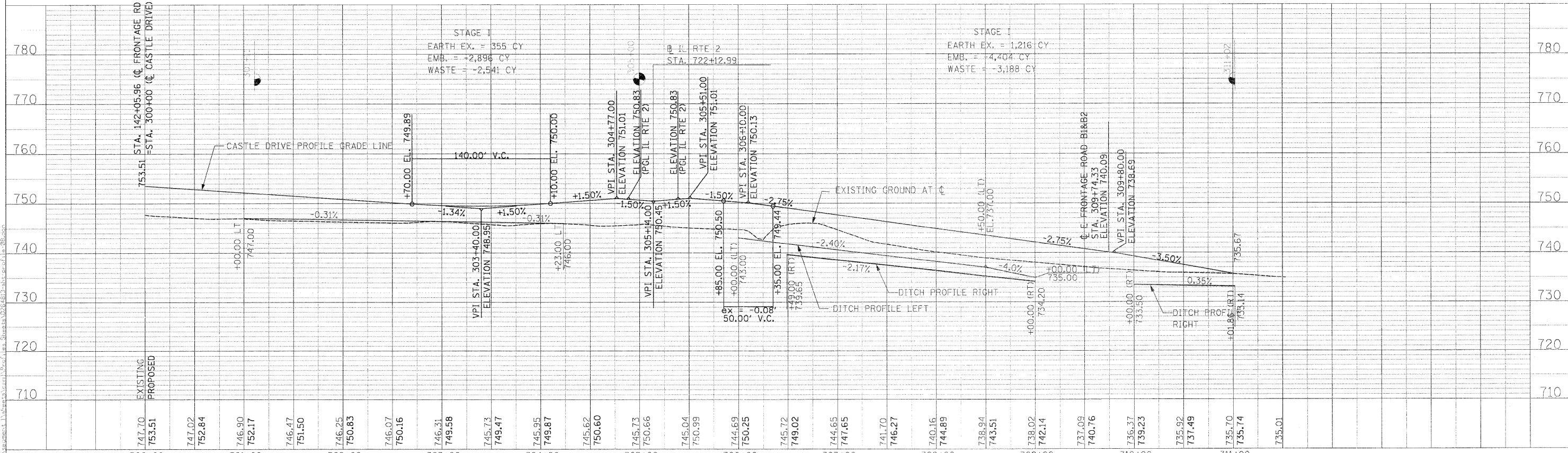


PLAN	REVISIONS	DATE
NO.	BY	
1		
2		
3		
4		
5		
6		
7		
8		
9		
10		
11		
12		
13		
14		
15		
16		
17		
18		
19		
20		
21		
22		
23		
24		
25		
26		
27		
28		
29		
30		
31		
32		
33		
34		
35		
36		
37		
38		
39		
40		
41		
42		
43		
44		
45		
46		
47		
48		
49		
50		
51		
52		
53		
54		
55		
56		
57		
58		
59		
60		
61		
62		
63		
64		
65		
66		
67		
68		
69		
70		
71		
72		
73		
74		
75		
76		
77		
78		
79		
80		
81		
82		
83		
84		
85		
86		
87		
88		
89		
90		
91		
92		
93		
94		
95		
96		
97		
98		
99		
100		

PROFILE	REVISIONS	DATE
NO.	BY	
1		
2		
3		
4		
5		
6		
7		
8		
9		
10		
11		
12		
13		
14		
15		
16		
17		
18		
19		
20		
21		
22		
23		
24		
25		
26		
27		
28		
29		
30		
31		
32		
33		
34		
35		
36		
37		
38		
39		
40		
41		
42		
43		
44		
45		
46		
47		
48		
49		
50		
51		
52		
53		
54		
55		
56		
57		
58		
59		
60		
61		
62		
63		
64		
65		
66		
67		
68		
69		
70		
71		
72		
73		
74		
75		
76		
77		
78		
79		
80		
81		
82		
83		
84		
85		
86		
87		
88		
89		
90		
91		
92		
93		
94		
95		
96		
97		
98		
99		
100		



STATION	999+00 (Bauer)
CULVERT SIZE & TYPE	2-135'-30" PRC
DRAINAGE AREA, IN ACRES	28
PROPOSED OPENING, IN SQ. FEET	9.8
50-Year Discharge, CFS	51.4
50-Year Headwater Elev.	743.33
100-Year Discharge, CFS	58.6
100-Year Headwater Elev.	743.64



USER NAME	thompson
DESIGNED	RD/GC
DRAWN	RD
CHECKED	GC
DATE	01-14-11

REVISED	-
REVISED	-
REVISED	-
REVISED	-

STATE OF ILLINOIS  
DEPARTMENT OF TRANSPORTATION

BAUER PARKWAY / CASTLE DRIVE PROFILE SHEET 8	
SCALE: H=1:50, V=1:10	SHEET NO. 101 OF 530 SHEETS
STA.	TO STA.

F.A.P. RTE.	SECTION	COUNTY	TOTAL SHEETS	SHEET NO.
734	77-2-1 & 77-2B-2	WINNEBAGO	530	101
CONTRACT NO. 64813				
ILLINOIS FED. AID PROJECT				