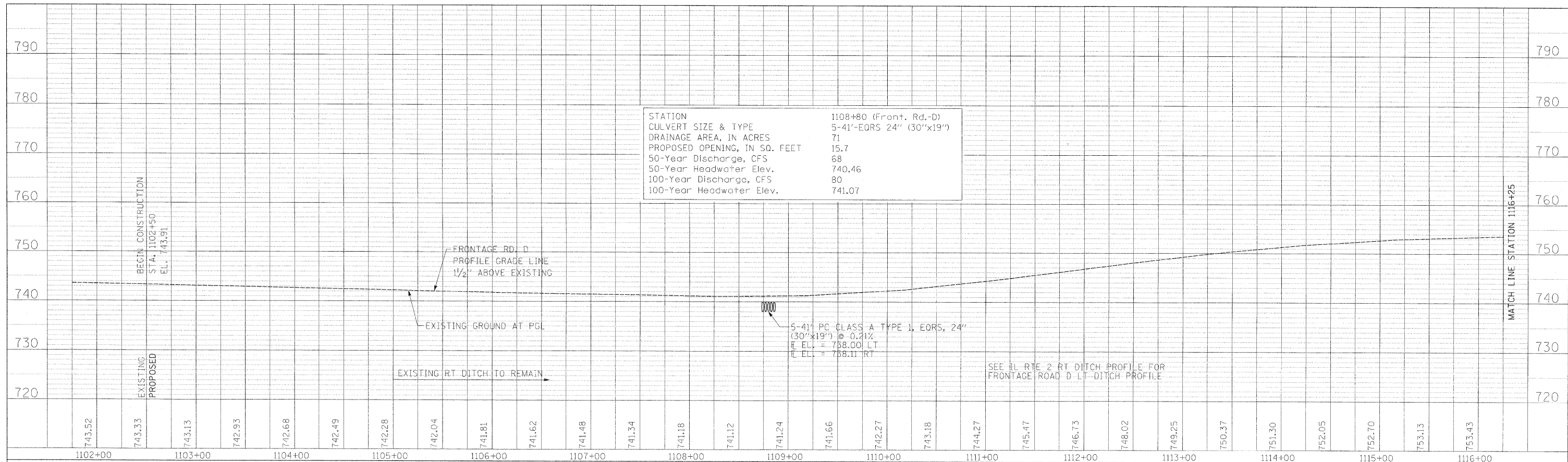
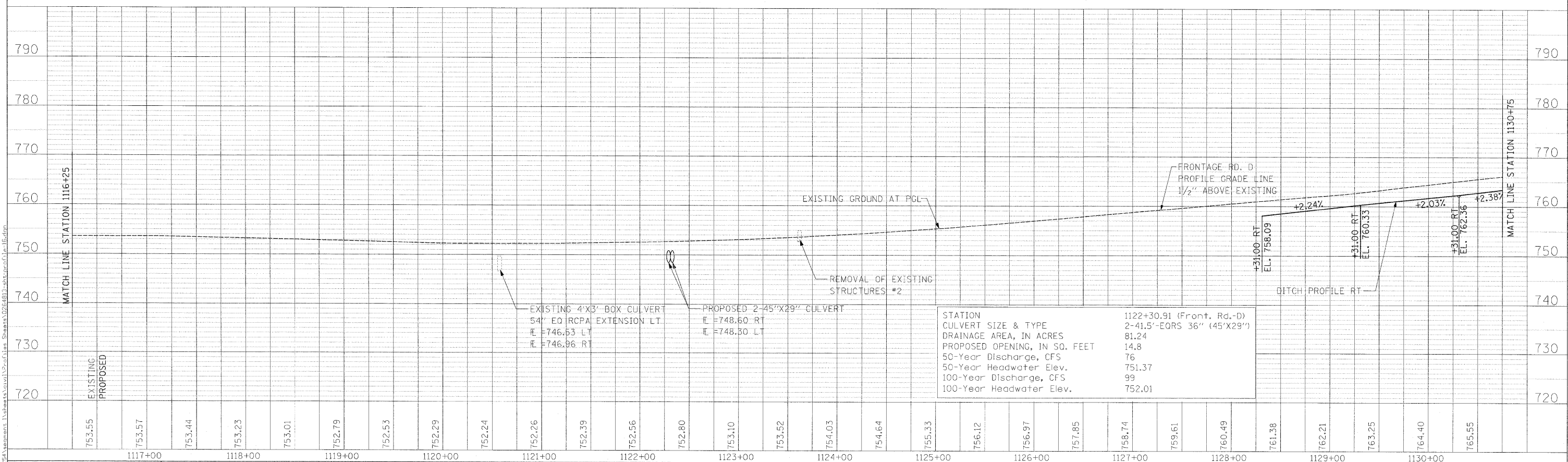


PLAN	SURVEYED	BY	DATE
	NOTE BOOK		
	ALIGNMENT CHECKED		
	PLAT OF WAY CHECKED		
	PAID FILE MADE		

PROFILE	SURVEYED	BY	DATE
	GRADES CHECKED		
	BLM. NOTED		
	STRUCTURE NOTATIONS OK'D		



STATION	1108+80 (Front. Rd.-D)
CULVERT SIZE & TYPE	5-41'-EORS 24" (30"x19")
DRAINAGE AREA, IN ACRES	71
PROPOSED OPENING, IN SQ. FEET	15.7
50-Year Discharge, CFS	68
50-Year Headwater Elev.	740.46
100-Year Discharge, CFS	80
100-Year Headwater Elev.	741.07



STATION	1122+30.91 (Front. Rd.-D)
CULVERT SIZE & TYPE	2-41.5'-EORS 36" (45'X29")
DRAINAGE AREA, IN ACRES	81.24
PROPOSED OPENING, IN SQ. FEET	14.8
50-Year Discharge, CFS	76
50-Year Headwater Elev.	751.37
100-Year Discharge, CFS	99
100-Year Headwater Elev.	752.01

USER NAME = zulkowad	DESIGNED RDT/GC	REVISED -
DESIGNED RDT	DRAWN RDT	REVISED -
CHECKED GC	DATE 01-14-11	REVISED -
PLOT DATE = 2/2/2011		REVISED -

**STATE OF ILLINOIS
DEPARTMENT OF TRANSPORTATION**

**FRONTAGE RD D
PROFILE SHEET 16**

SCALE: H=1:50,V=1:10 SHEET NO. 109 OF 530 SHEETS STA. 1102+00 TO STA. 1130+75

F.A.P. RTE.	SECTION	COUNTY	TOTAL SHEETS	SHEET NO.
734	77-2-1 & 77-2B-2	WINNEBAGO	530	109
CONTRACT NO. 64813				
ILLINOIS FED. AID PROJECT				