
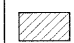


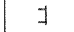





LEGEND

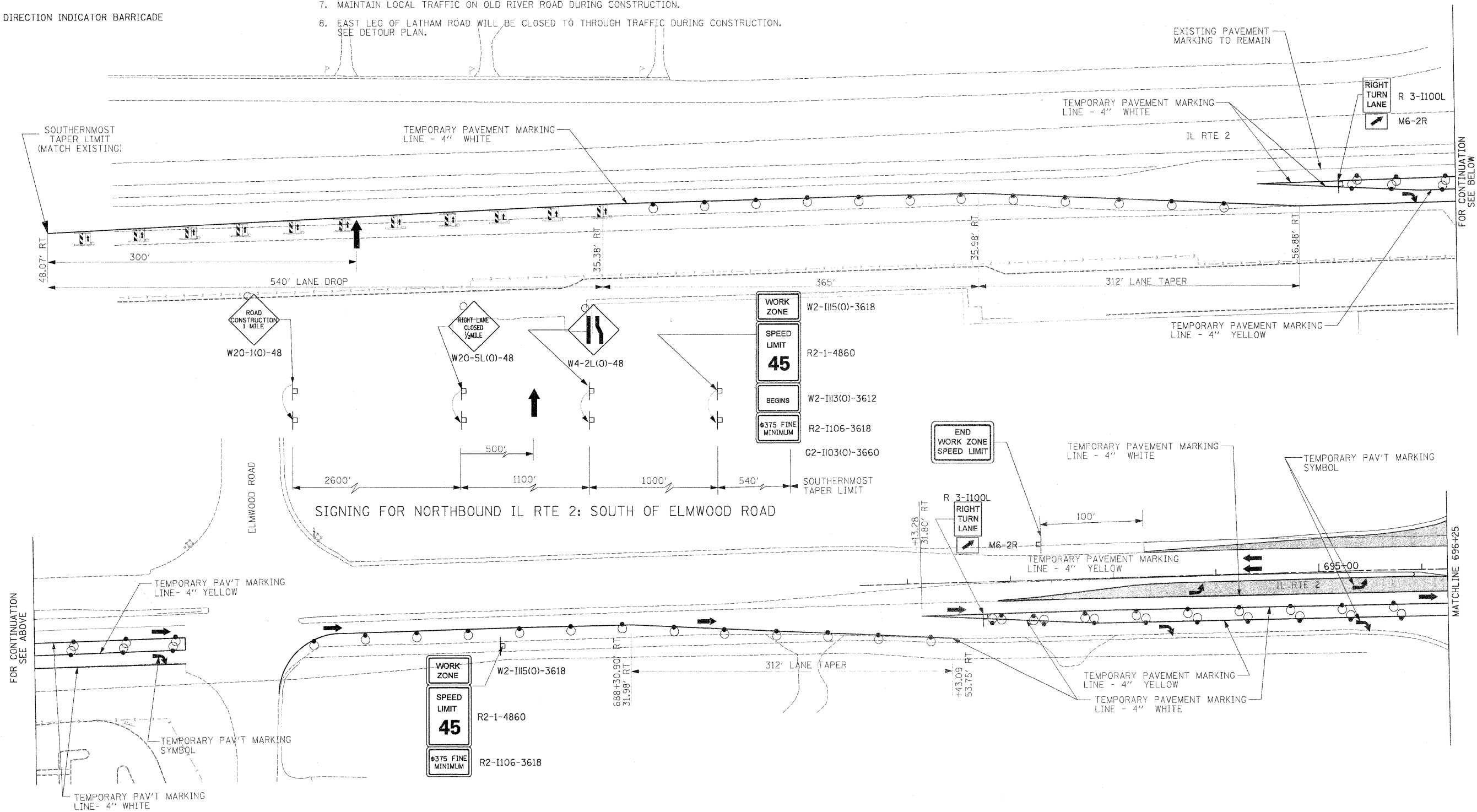
-  EXISTING OR NEWLY CONSTRUCTED PAVEMENT USED FOR TRAFFIC
-  CONSTRUCTION ZONE DURING STAGE
-  DIRECTION OF TRAVEL
-  TEMPORARY PAVEMENT (SEE TYPICAL SECTION FOR WIDENING)
-  BARRICADE, TYPE III
-  DRUM WITH STEADY BURNING LIGHT
-  ARROW BOARD
-  DIRECTION INDICATOR BARRICADE

STAGE 2 TRAFFIC

1. SOUTH TERMINUS OF IL RTE 2 REQUIRES A SINGLE LANE OF TRAFFIC IN EACH DIRECTION SOUTH OF CONSTRUCTION LIMITS. THIS WILL REQUIRE A CROSSOVER TO BE PLACED BETWEEN STA. 700+00 TO STA. 706+00.
2. IL RTE 2 TRAFFIC WILL BE PLACED ON THE NEWLY CONSTRUCTED SB LANES FOR THE ENTIRE LENGTH OF THE PROJECT. SB TRAFFIC WILL UTILIZE THE RIGHT SHOULDER FROM STA. 811+59 TO STA. 824+57.
3. WEST FRONTAGE ROAD A WILL BE OPEN TO TRAFFIC BETWEEN BAUER ROAD UP TO STA. 707+00.
4. WEST FRONTAGE ROADS WILL BE OPEN TO TRAFFIC BETWEEN STA. 750+00 TO STA. 830+00.
5. PLACE OLD RIVER ROAD TRAFFIC ON THE TEMPORARY PAVEMENT PLACED IN STAGE 1.
6. LATHAM ROAD WILL BE OPEN TO TRAFFIC THROUGH INTERSECTION OF THE NEW FRONTAGE ROAD ON THE WEST SIDE OF IL RTE 2.
7. MAINTAIN LOCAL TRAFFIC ON OLD RIVER ROAD DURING CONSTRUCTION.
8. EAST LEG OF LATHAM ROAD WILL BE CLOSED TO THROUGH TRAFFIC DURING CONSTRUCTION. SEE DETOUR PLAN.

STAGE 2 CONSTRUCTION

1. CONSTRUCT THE REMAINING SOUTH TERMINI OF IL RTE 2 AS INDICATED ON THE PLANS.
2. CONSTRUCT THE SOUTH SIDE OF OLD RIVER ROAD TO THE LIMITS SHOWN.
3. CONSTRUCT FRONTAGE ROAD D FROM STA. 1136+00 TO THE INTERSECTION OF LATHAM ROAD.
4. CONSTRUCT LATHAM ROAD FROM STA. 1673+69 TO STA. 1700+53.
5. REMOVE EXISTING PAVEMENT FROM EX. IL RTE 2 FROM STA. 802+00 TO STA. 834+50.



USER NAME = thompson	DESIGNED STS/ROT	REVISED
DRAWN RDT	REVISOR	REVISOR
CHECKED CC	REVISOR	REVISOR
DATE 01-14-11	REVISOR	REVISOR

**STATE OF ILLINOIS
DEPARTMENT OF TRANSPORTATION**

**ILLINOIS ROUTE 2
SUGGESTED STAGES OF CONSTRUCTION
AND TRAFFIC CONTROL STAGE 2 - 1**

SCALE: 1"=50' SHEET NO. 147 OF 530 SHEETS STA. 674+00 TO STA. 696+25

F.A.P. RTE.	SECTION	COUNTY	TOTAL SHEETS	SHEET NO.
734	77-2-2 & 77-2B-1	WINNEBAGO	530	147
FED. ROAD DIST. NO. ILLINOIS FED. AID PROJECT			CONTRACT NO. 64813	