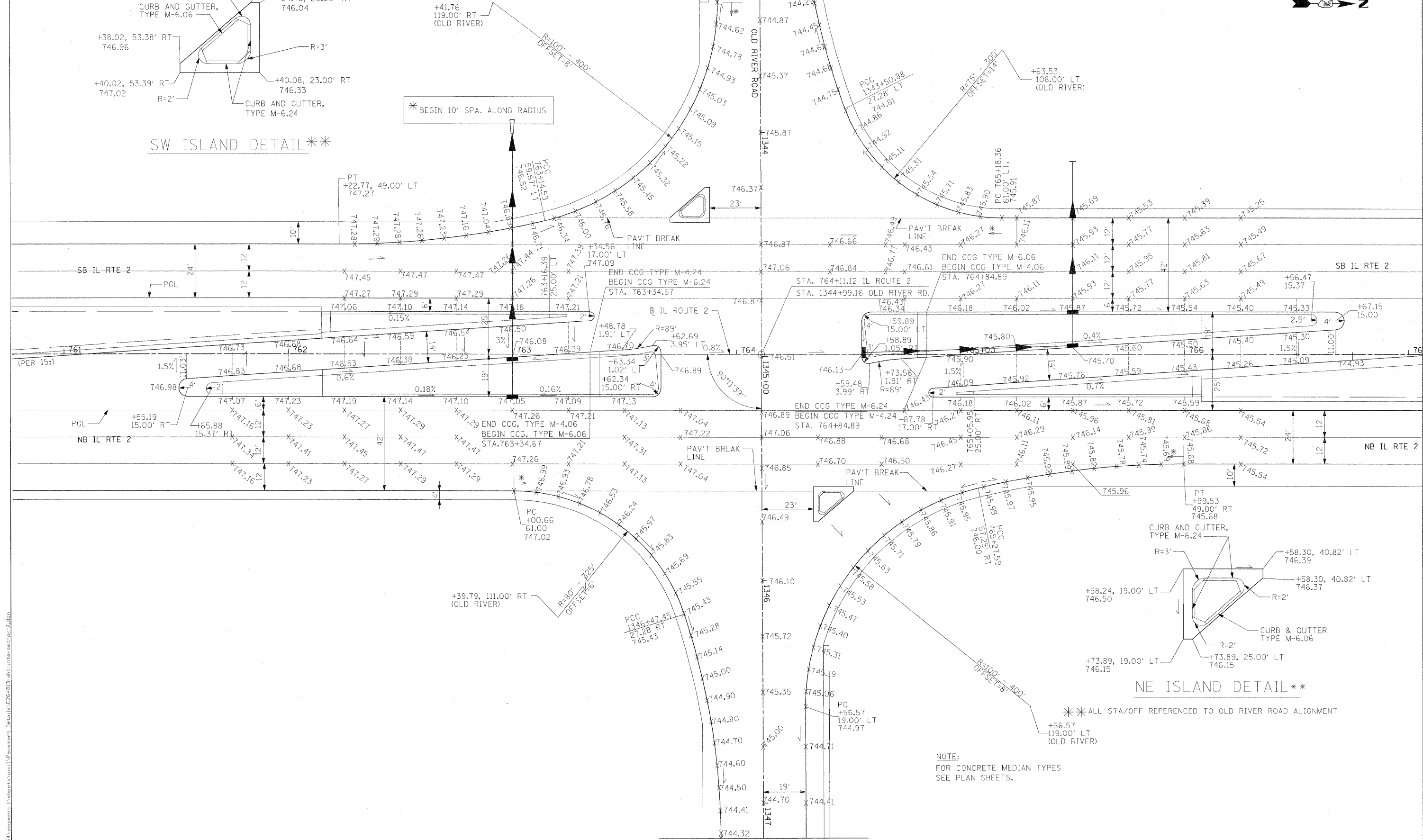
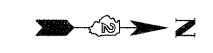


SW ISLAND DETAIL\*\*

\* BEGIN 10' SPA. ALONG RADIUS

MATCHLINE STA 1343+40.00  
SEE INTERSECTION DETAIL 6



NE ISLAND DETAIL\*\*

\*\* ALL STA/OFF REFERENCED TO OLD RIVER ROAD ALIGNMENT

NOTE:  
FOR CONCRETE MEDIAN TYPES  
SEE PLAN SHEETS.

I:\Projects\1125\Assignment\1125\Sheet\Nov11\ pavement.dwg (2/26/2011 10:26:48) 13-ah-trim.rvt sac-r-2.dwg

USER NAME = zulkowd	DESIGNED STS/GC	REVISED -
DRAWN RDT	REVISIONS	
CHECKED GC	REVISIONS	
DATE 01-14-11	REVISIONS	

DESIGNED STS/GC	REVISED -
REVISIONS	
REVISIONS	
REVISIONS	

**STATE OF ILLINOIS  
DEPARTMENT OF TRANSPORTATION**

ILLINOIS ROUTE 2 INTERSECTION DETAIL 7 OLD RIVER RD AT ILLINOIS ROUTE 2	
SCALE: 1" = 20'	SHEET NO. 241 OF 530 SHEETS
STA.	TO STA.

F.A.P. RTE. 734	SECTION 77-2-2 & 77-2B-1	COUNTY WINNEBAGO	TOTAL SHEETS 530	SHEET NO. 241
CONTRACT NO. 64813				
FED. ROAD DIST. NO. ILLINOIS FED. AID PROJECT				