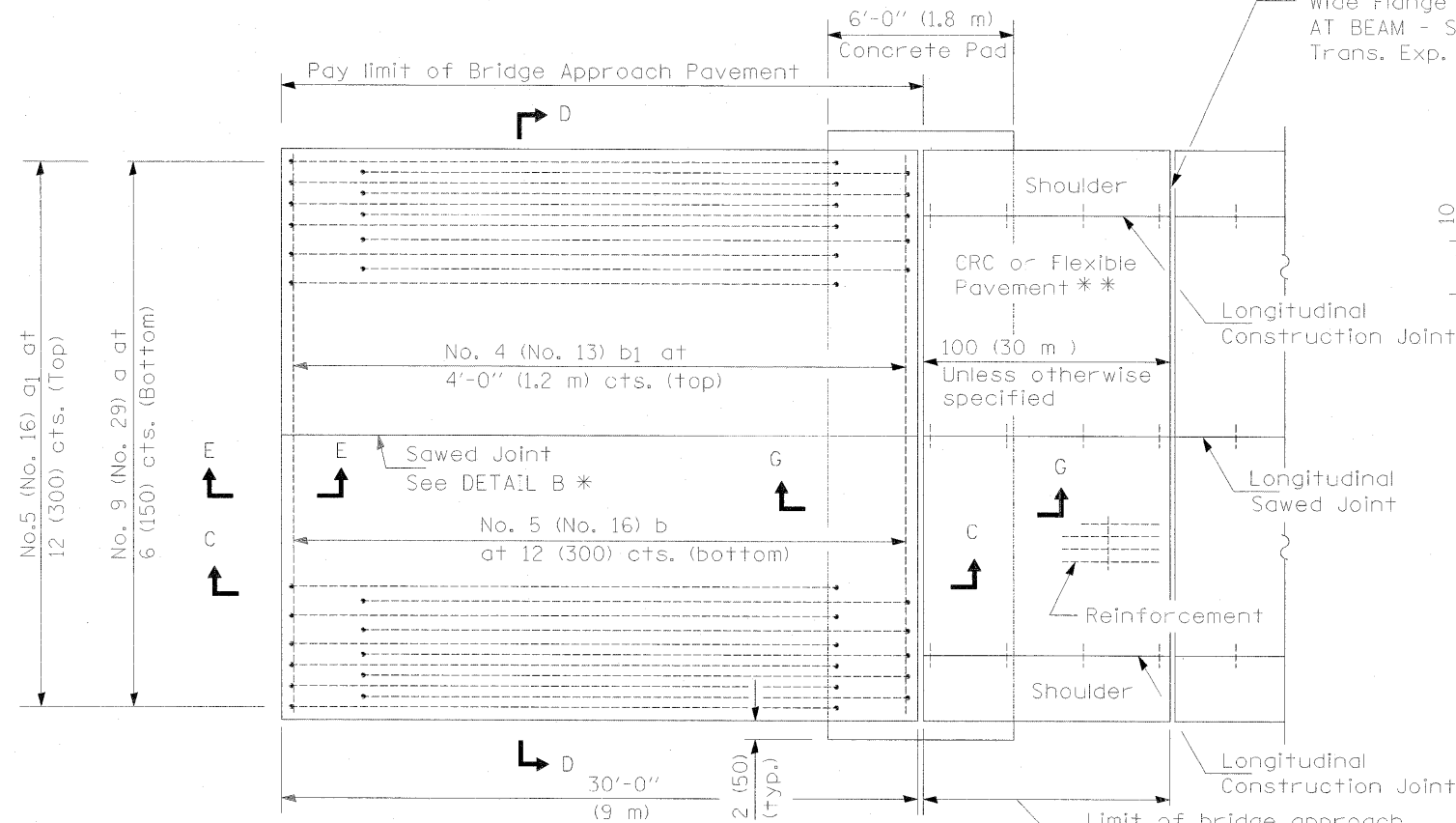


PLAN - WITH SKEW



PLAN - WITHOUT SKEW

* Saw \perp or lane edge if poured two or more lane widths at a time.
 ** Omit Reinforcement, tie bars and Long. sawed Jt. for Flexible Pavement.

NEW CONSTRUCTION

Longitudinal Construction Joint

Shoulder
 Reinforcement

100'-0" (30 m) Unless otherwise specified

CRC or Flexible Pavement **
 Longitudinal Sawed Joint

Longitudinal Construction Joint

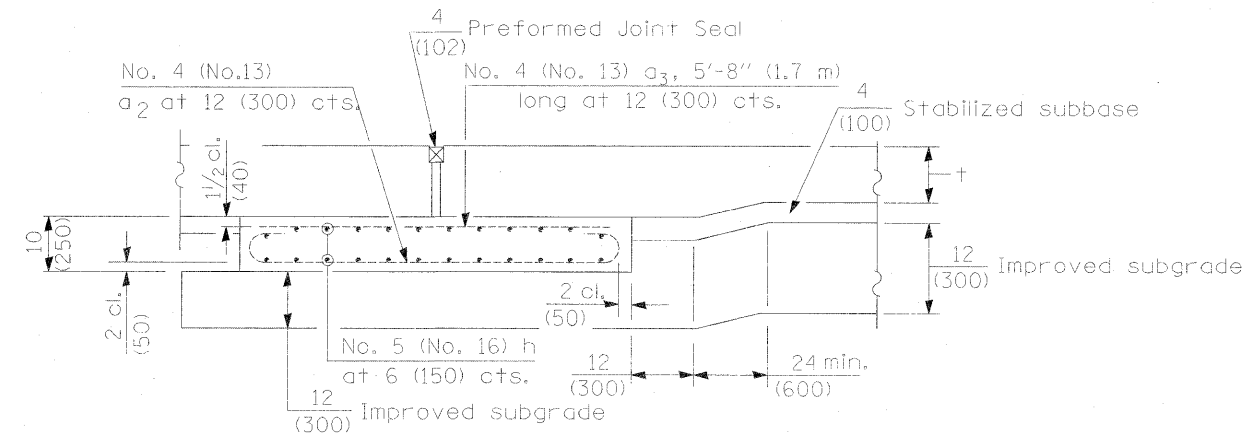
Rigid Pavement* only:

Wide Flange Beam Terminal Joint (See DETAIL AT BEAM - Standard 421101 or 421106) or 2 (50) Trans. Exp. Joint as detailed on Standard 420001.

$\frac{1}{8}$ (3) x $\frac{1}{2}$ (40) Sawn groove
 Fill with poured joint sealer

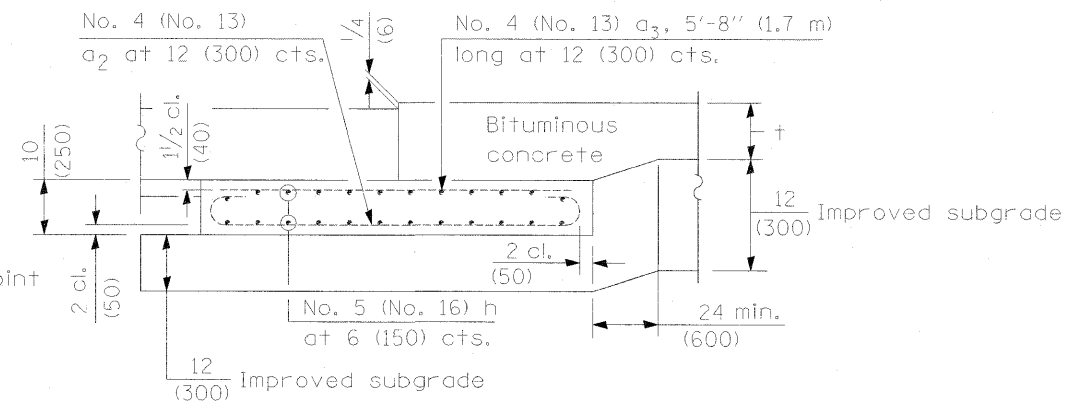
DETAIL B*

(Reinforcement Not Shown)



SECTION G-G - RIGID PAVEMENT

(Showing reinforcement)



SECTION G-G - FLEXIBLE PAVEMENT

(Showing reinforcement)

GENERAL NOTES

THICKNESS-"t"=Thickness of Pavement.
 See Standard 421001 for reinforcement details not shown.
 See Standard 420001 for joint details not shown.
 All dimensions are in inches (millimeters) unless otherwise shown.

BRIDGE APPROACH PAVEMENT

(Sheet 1 of 4)