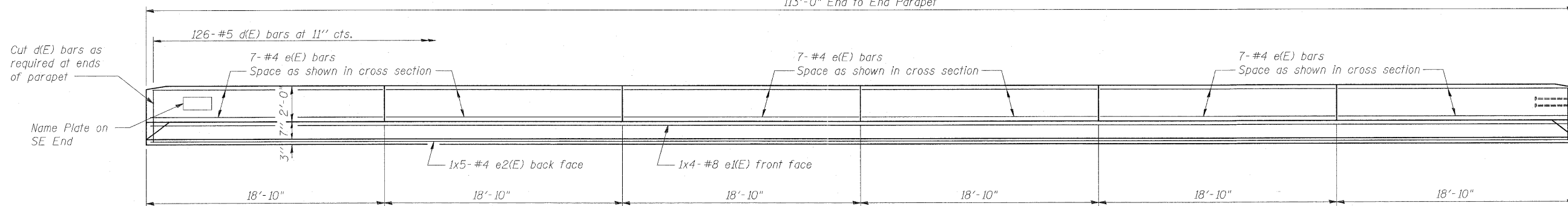


STATE OF ILLINOIS  
DEPARTMENT OF TRANSPORTATION

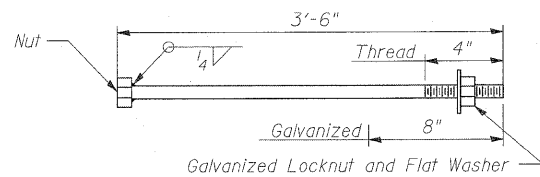
113'-0" End to End Parapet



Min. Bar Lap  
#4 = 1'-8"  
#5 = 2'-2"  
#8 = 4'-6"

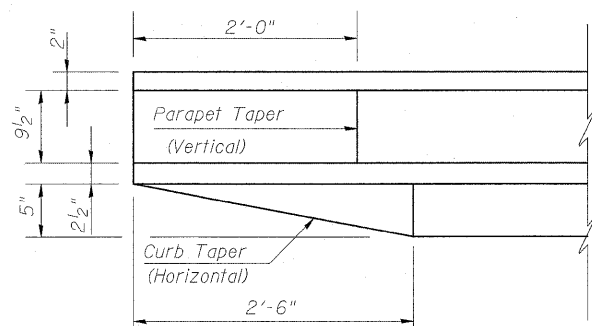
INSIDE ELEVATION OF WEST PARAPET

Looking West (East Parapet Similar)



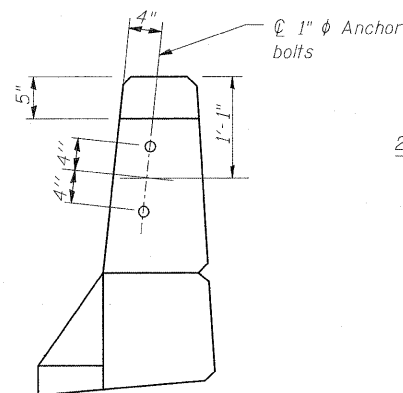
1"  $\phi$  ANCHOR BOLT

Cost of Anchor Bolts Included with Concrete Superstructure

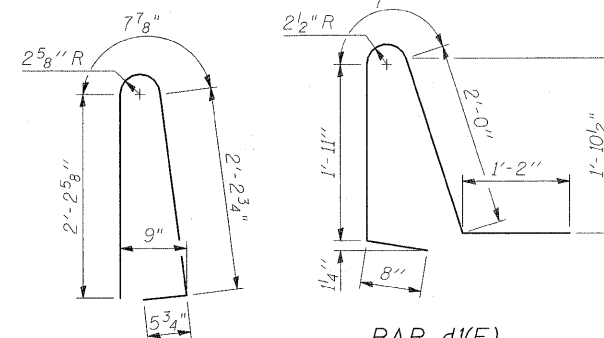


END PLAN @ APPROACH

(South End Shown, North End Similar)



VIEW C-C

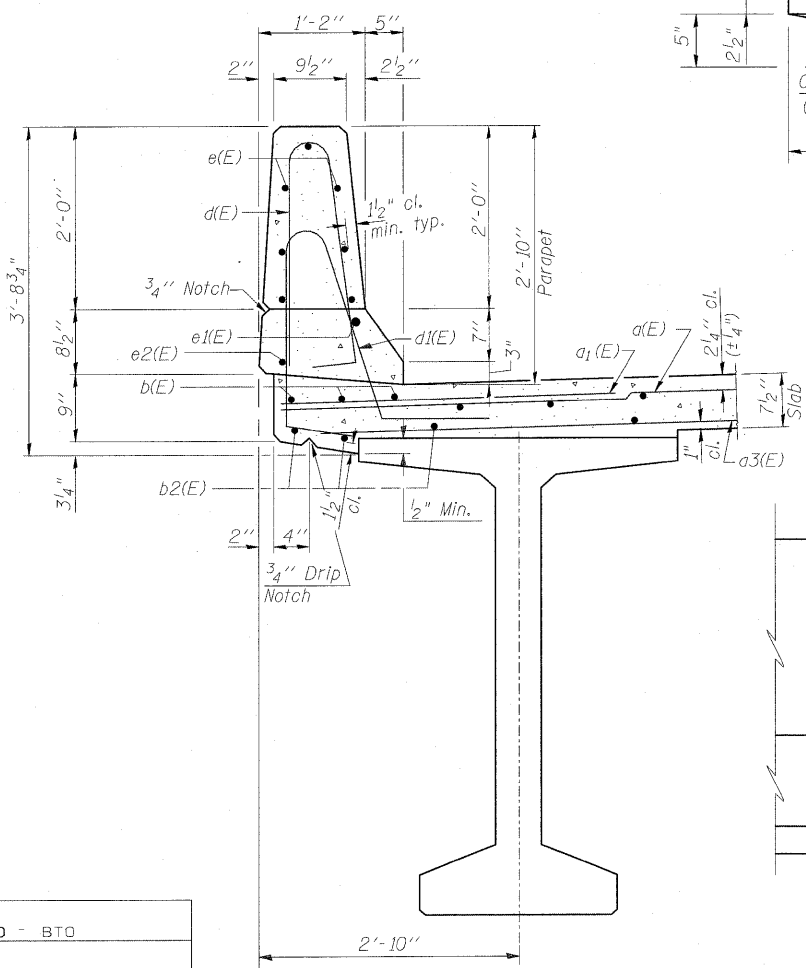


BAR d(E)

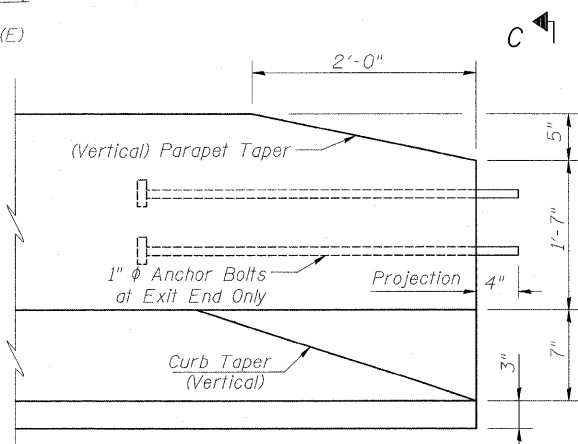
BAR d1(E)

NB SUPERSTRUCTURE  
BILL OF MATERIAL

Bar	No.	Size	Length	Shape
d(E)	272	#5	42'-10"	—
d1(E)	270	#6	6'-0"	—
b(E)	180	#5	29'-10"	—
b2(E)	180	#5	24'-4"	—
d(E)	252	#5	5'-7"	U
d1(E)	252	#5	6'-4"	U
e(E)	84	#4	18'-7"	—
e1(E)	16	#8	31'-7"	—
e2(E)	20	#4	24'-6"	—
m(E)	8	#6	21'-9"	—
m1(E)	16	#6	22'-9"	—
m2(E)	42	#6	8'-6"	—
m3(E)	12	#6	3'-10"	—
m4(E)	4	#6	1'-6"	—
s(E)	84	#5	5'-0"	U
s1(E)	48	#4	14'-10"	U
v(E)	84	#5	3'-8"	U
Reinforcement Bars, Epoxy Coated			Lbs.	33,260
Concrete Superstructure			Cu. Yds.	200.7

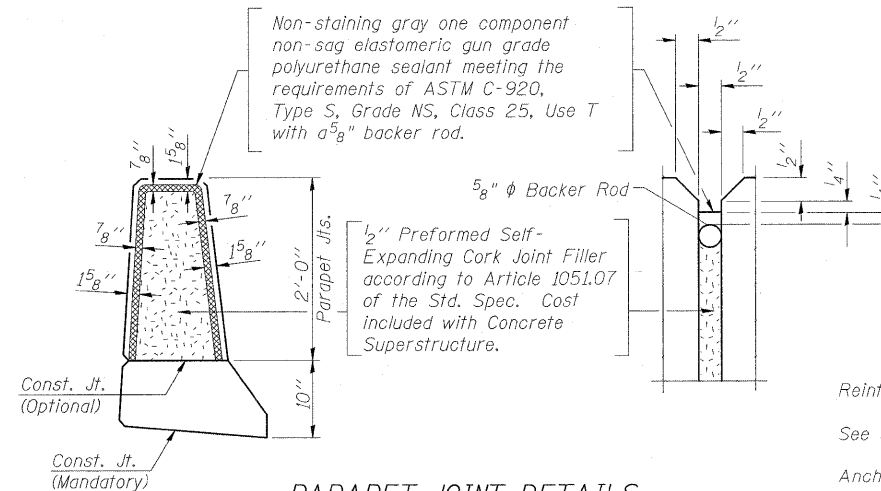


SECTION THRU PARAPET



END ELEVATION (Along I.F. Parapet)

(North End Shown, South End Similar)



PARAPET JOINT DETAILS

Reinforcement bars designated (E) shall be epoxy coated.  
See sht. 21 for details of s(E), s1(E), and v(E) bars.  
Anchor bolts shall be A 307 Gr C, F-1554 Gr 36 or M314 Gr 36.

NB SUPERSTRUCTURE DETAILS & B.O.M.  
STRUCTURE NO. 101-0178

DESIGNED -	BTO
CHECKED -	JAN
DRAWN -	BTO
CHECKED -	JAW

Work this sheet with Sheets 11 of 30 and 13 of 30.

SHEET NO. 15 30 SHEETS	F.A.P. RTE.	SECTION	COUNTY	TOTAL SHEETS	SHEET NO.
	734	77-2B-1, 77-2-2	WINNEBAGO	530	287
FED. ROAD DIST. NO.			ILLINOIS FED. AID PROJECT	CONTRACT NO. 64813	