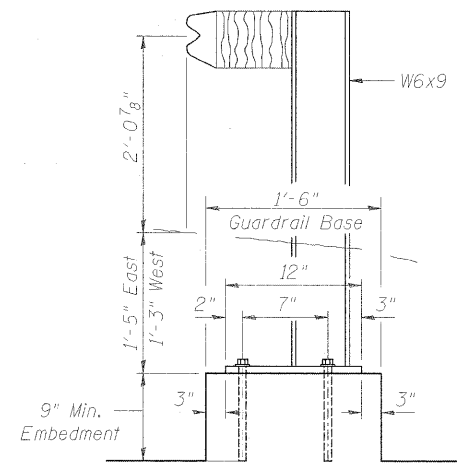
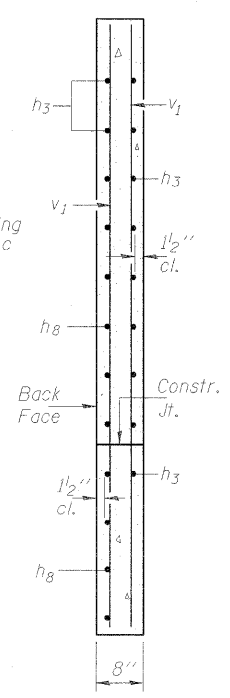
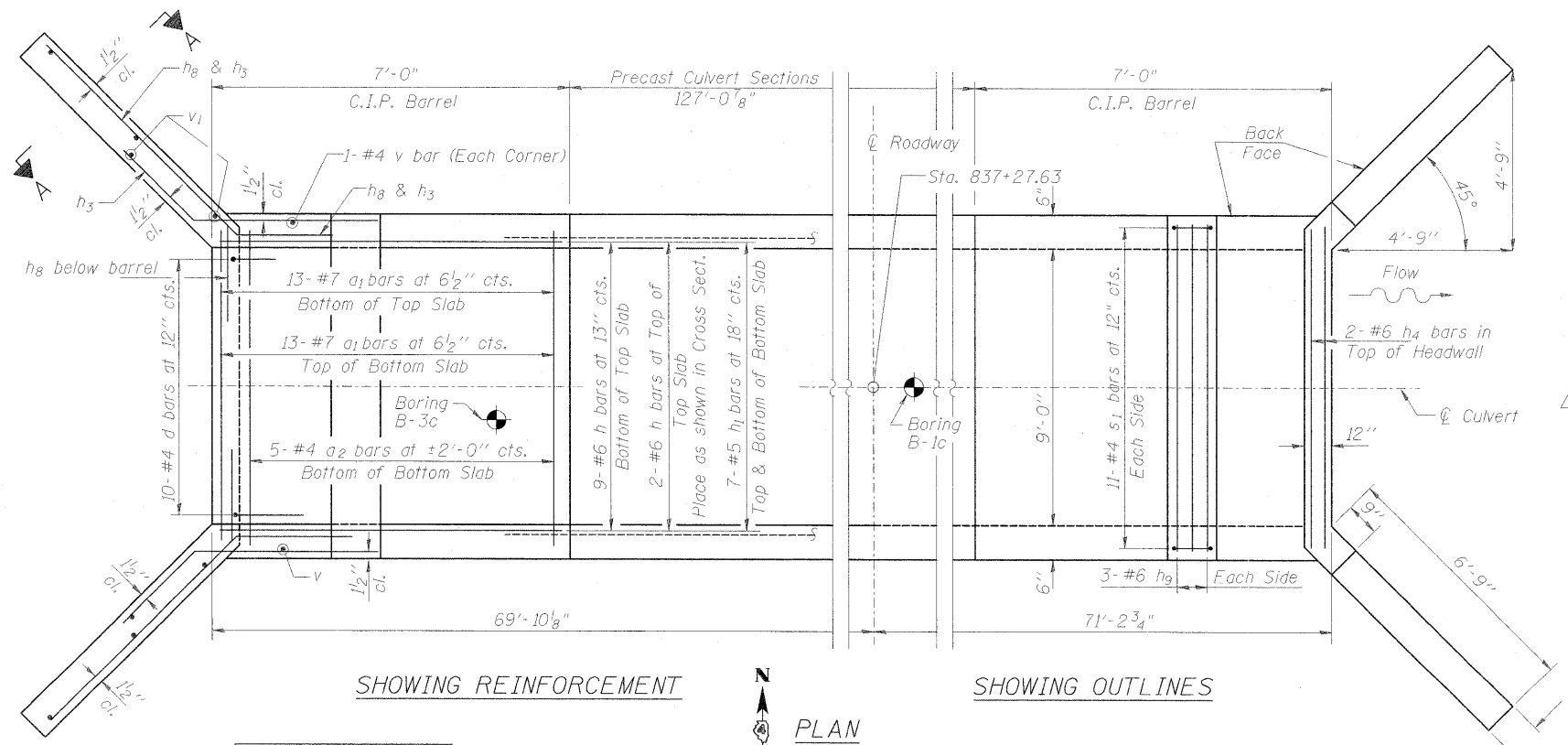
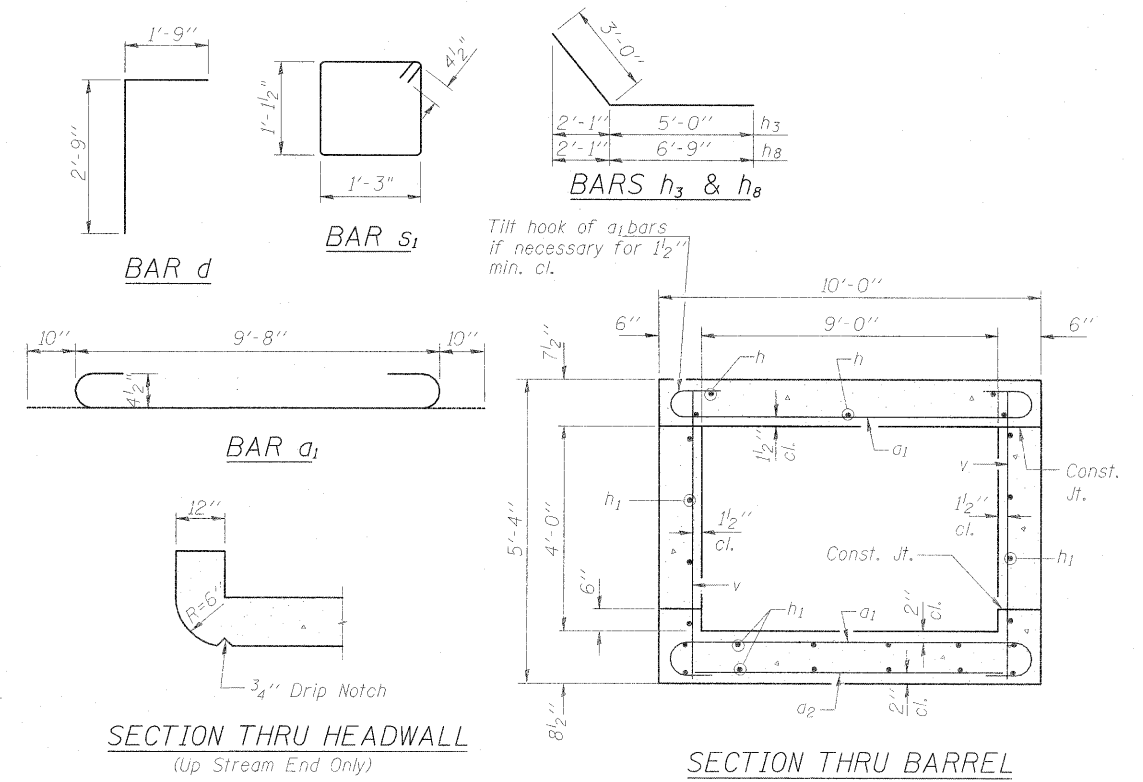
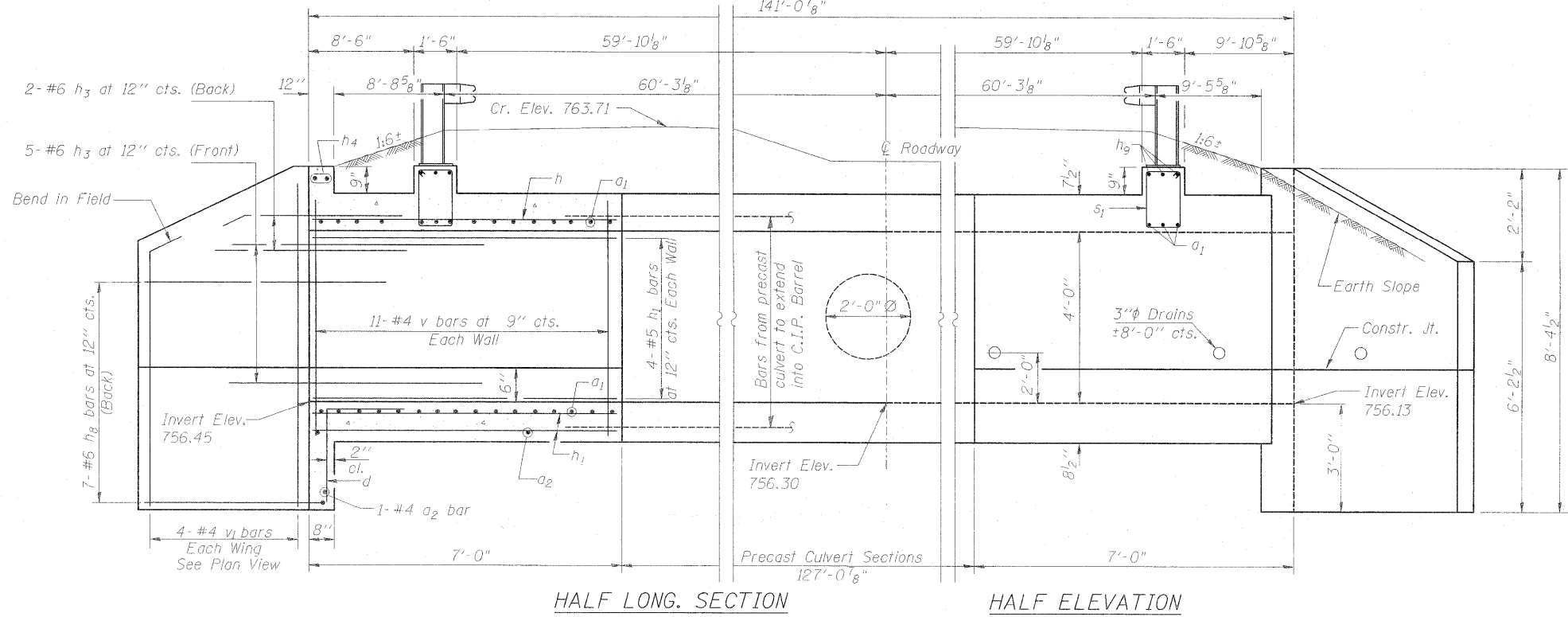


STATE OF ILLINOIS
DEPARTMENT OF TRANSPORTATION



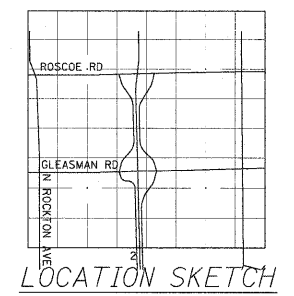
BILL OF MATERIAL

Bar	No.	Size	Length	Shape	
a1	52	#7	11'-4"	U	
a2	12	#4	9'-3"	—	
d	20	#4	4'-6"	L	
h	22	#6	6'-8"	—	
h1	44	#5	6'-8"	—	
h3	28	#6	8'-0"	—	
h4	4	#6	9'-0"	—	
h8	28	#6	9'-9"	—	
h9	6	#6	9'-9"	—	
v	44	#4	5'-0"	—	
v1	16	#4	8'-1"	—	
s1	22	#4	5'-6"	□	
Concrete Box Culverts				Cu. Yd.	16.4
Reinforcement Bars				Pound	3070
Precast Concrete Box Culvert 9'x4'				Feet	127

GUARDRAIL DETAIL
See Standard 630101-08 for structural steel details and maximum post spacing. See Roadway Plans for quantity.

DESIGN STRESSES
fy = 60,000 psi
f'c = 3,500 psi
LOADING HS 20-44 & ALT.

DESIGNED - APH
CHECKED - JAW
DRAWN - APH
CHECKED - JAW



NOTES
A distance of half the length of the wingwall but not less than six feet of the barrel shall be poured monolithically with the wingwalls.
Reinforcement Bars shall conform to the requirements of AASHTO M-31, M-42 or M-53, Grade 60.
All construction joints shall be bonded.

ILLINOIS ROUTE 2
CULVERT AT STA. 837+28 (MAINLINE)

SHEET NO. 1 2 SHEETS	F.A.P. RTE. 734	SECTION 77-2B-1, 77-2-2	COUNTY WINNEBAGO	TOTAL SHEETS 530	SHEET NO. 304
	CONTRACT NO. 64813		FED. ROAD DIST. NO. ILLINOIS FED. AID PROJECT		