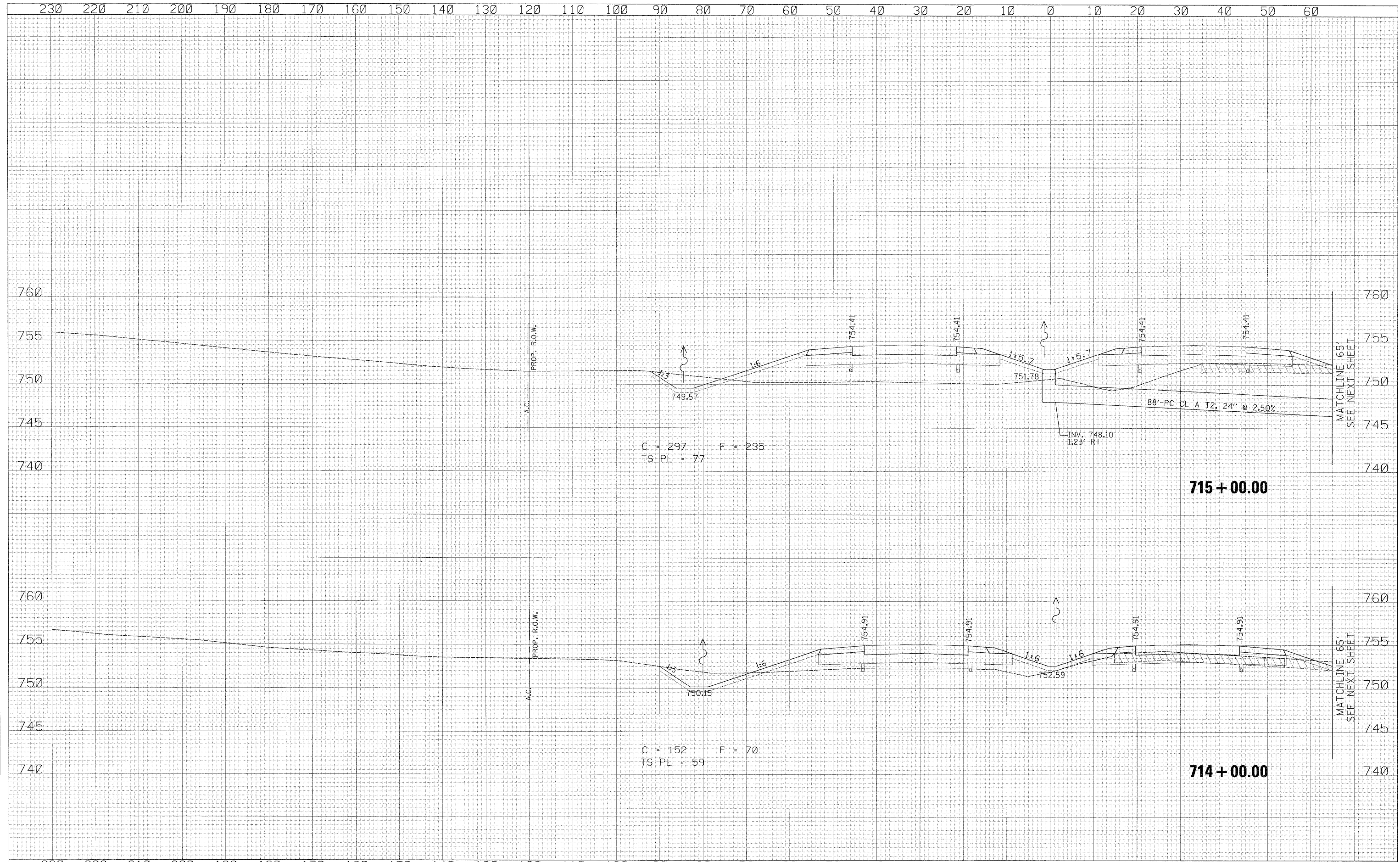


DATE	
BY	
CHECKED	
DESIGNED	
PLOTTED	
TEMPLATE	
AREAS	
CHECKED	
FINAL SURVEY	
NOTE BOOK	
NO.	

DATE	
BY	
CHECKED	
DESIGNED	
PLOTTED	
TEMPLATE	
AREAS	
CHECKED	
ORIGINAL SURVEY	
NOTE BOOK	
NO.	



230	220	210	200	190	180	170	160	150	140	130	120	110	100	90	80	70	60	50	40	30	20	10	0	10	20	30	40	50	60																						
USER NAME = zulkowad DESIGNED - RDT DRAWN - RDT CHECKED - GC DATE - 01-14-11												REVISIONS REVISIONS REVISIONS REVISIONS												STATE OF ILLINOIS DEPARTMENT OF TRANSPORTATION												ILLINOIS ROUTE 2 CROSS SECTIONS												F.A.P. RTE. 734 SECTION 77-2-2 & 77-2B-1 COUNTY WINNEBAGO CONTRACT NO. 64813		TOTAL SHEETS 530 SHEET NO. 336	
PLOT SCALE = 10.0000' / IN. PLOT DATE = 2/2/2011 SCALE: 1" = 10' SHEET NO. 336 OF 530 SHEETS STA. 714+00.00 TO STA. 715+00.00 ILLINOIS FED. AID PROJECT																																																			

z:\projects\11254\segment1\shelton\shelton\11254\shelton\11254.dgn