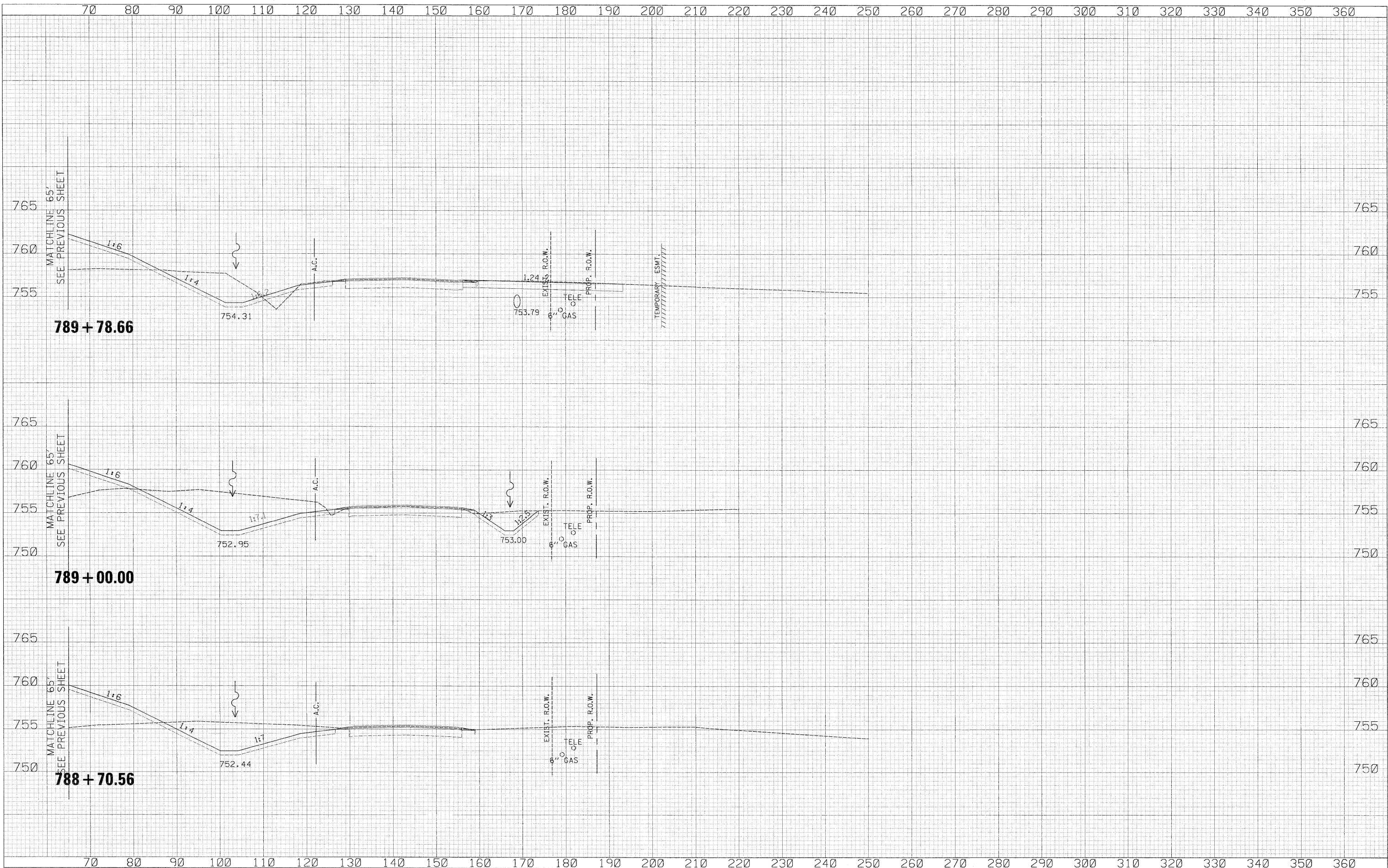


DATE	
BY	
SURVEYED	
PLOTTED	
NOTE BOOK	
AREAS CHECKED	

DATE	
BY	
SURVEYED	
PLOTTED	
NOTE BOOK	
AREAS CHECKED	



USER NAME = zulkowid	DESIGNED - RDT	REVISED -
PLLOT SCALE = 10.0000' / IN.	DRAWN - RDT	REVISED -
PLLOT DATE = 2/2/2011	CHECKED - GC	REVISED -
	DATE - 01-14-11	REVISED -

STATE OF ILLINOIS
DEPARTMENT OF TRANSPORTATION

ILLINOIS ROUTE 2
CROSS SECTIONS

F.A.P. RTE. 734	SECTION 77-2-2 & 77-2B-1	COUNTY WINNEBAGO	TOTAL SHEETS 530	SHEET NO. 419
				CONTRACT NO. 64813

SCALE: 1" = 10' SHEET NO. 419 OF 530 SHEETS STA. 788+70.56 TO STA. 789+78.66

I:\projects\11254\segment 1\sheeta\civil\section\0264813-sha-sht-L2.dgn