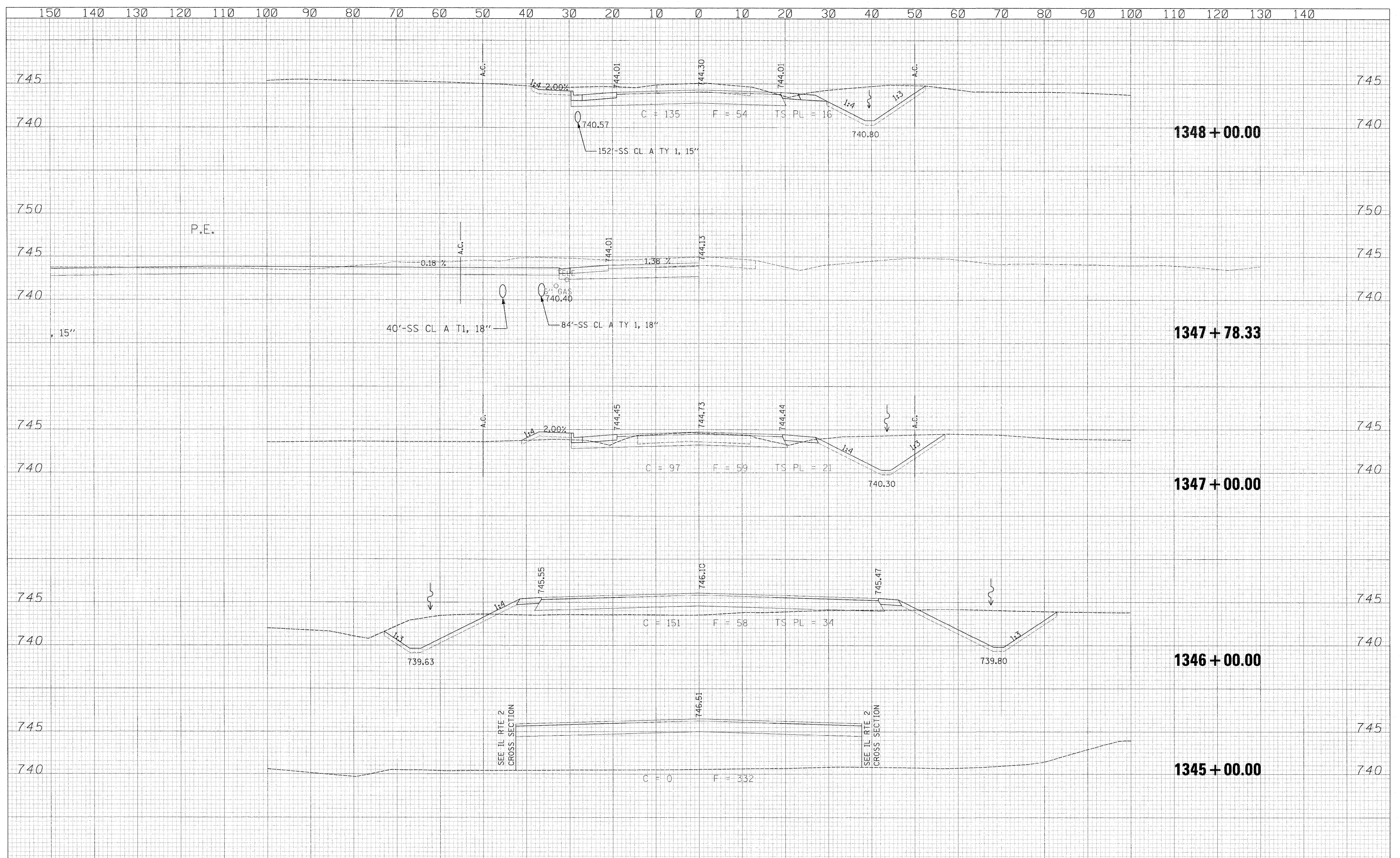


DATE	
BY	
FINAL SURVEY	
SUPERVISED	
PLOTTED	
NOTE BOOK	
AREAS CHECKED	
NO.	

DATE	
BY	
ORIGINAL SURVEY	
SUPERVISED	
PLOTTED	
NOTE BOOK	
AREAS CHECKED	
NO.	



150	140	130	120	110	100	90	80	70	60	50	40	30	20	10	0	10	20	30	40	50	60	70	80	90	100	110	120	130	140									
USER NAME = zulkowid															DESIGNED RDT		REVISED -		STATE OF ILLINOIS DEPARTMENT OF TRANSPORTATION OLD RIVER ROAD CROSS SECTIONS SCALE: H:1:10' SHEET NO. 480 OF 530 SHEETS STA. 1345+00.00 TO STA. 1348+00.00										F.A.P. RTE.		SECTION		COUNTY		TOTAL SHEETS		SHEET NO.	
PLOT SCALE = 10,0000' / IN.															DRAWN RDT		REVISED -												734		77-2-2 & 77-2B-1		WINNEBAGO		530		480	
PLOT DATE = 2/2/2011															CHECKED GC		REVISED -												CONTRACT NO. 64813		ILLINOIS FED. AID PROJECT							
DATE 01-14-11															REVISED -																							

\\projects\11254\segment1\sheet\civil\section\0264813-shr-ssht-01d-River.dgn